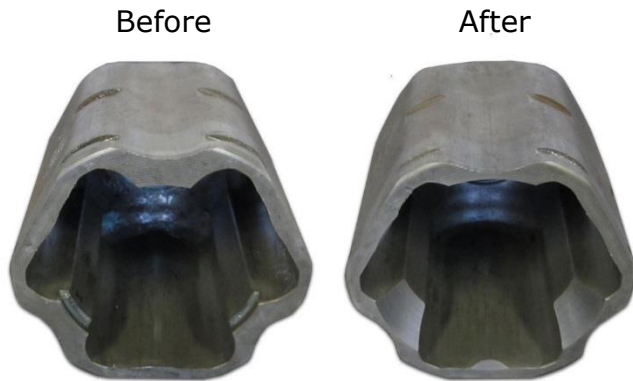


ADDITIONAL 4WD INFO AND PRICING

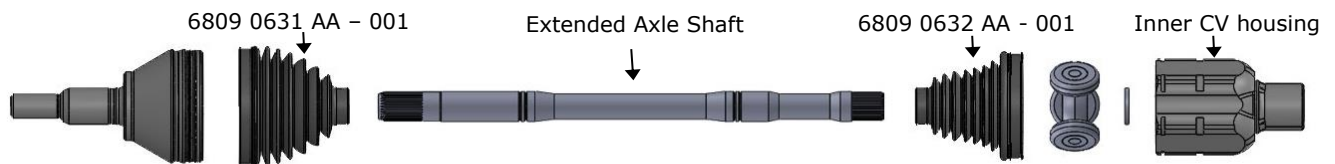
Applications: 2009-Current Ram 1500



The inner CV housing must be internally machined to allow for all of the down travel. Machine the housing at a 27° taper until it has removed material on all six edges as shown in the “After” photo. The CV housing may also be sent into Dirt King Fabrication to be machined. Do not reuse the old grease boots when assembling the axle. Due to the increased CV articulation we recommend applying epoxy to the boots so they don’t separate from the CV housings. For purchasing or if you have any questions contact us by phone or email.

(619) 944-8913

sales@dirtkingfabrication.com



Products

Axle dust boot kit (includes 4 boots) **\$203.50**

Extended long travel axle shafts **\$649**

Complete long travel axle assemblies **\$1172.50-\$1432.50**

Customer supplying factory axles **\$1172.50**

Dirt King supplying factory axles **\$1432.50**

- new CV boots and grease
- Dirt King extended long travel axle shafts
- machined inner CV
- professionally assembled

Services

Inner CV machining (price for pair of CV's) **\$120**

Axle machining and assembly (price for pair of axles) **\$523.50**

- disassembly of factory axles
- machining inner CV's
- reassembly of axles with new boots and high grade CV grease
- *price does not include long travel axle shafts

REV 12/18/2017

