



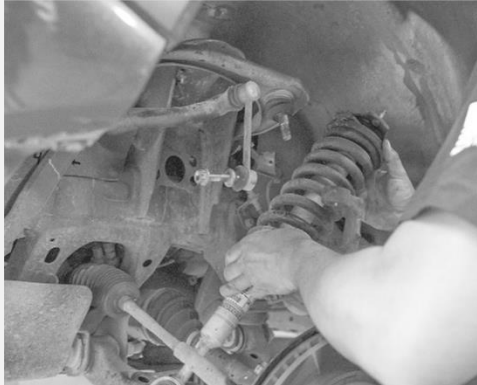
Parts Included

Quantity	Item Description	Part#
1	Left Coilover Shock	DK-811989F-A1300
1	Right Coilover Shock	DK-811989F-A1400
1	Left Reservoir Mount	DK-811989F-A1301
1	Right Reservoir Mount	DK-811989F-A1401
1	Spanner Wrench	DK-SW001
1	Allen Key	N/A

Please check that all items are present before installation. If for any reason, there is an item or items missing send an email to sales@dirtking.com with proof of purchase and a picture of parts received.

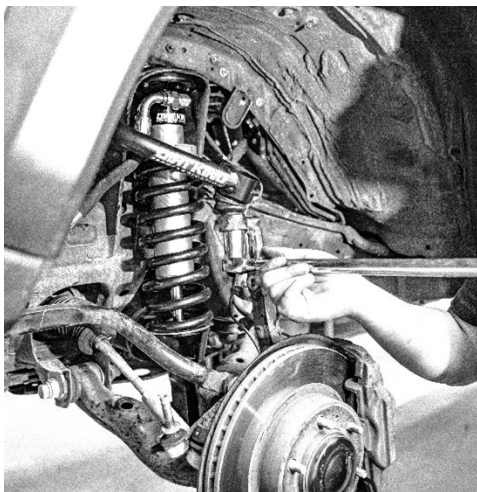


Before installing, read all instructions. Only certified mechanics should install Dirt King products. Mandatory wheel alignment and ADAS calibration at certified facilities are required after suspension modifications. Failure to do so can lead to handling problems and safety risks. Dirt King is not responsible for damages from improper installation or misuse. Adhere to your vehicle manufacturer's recommendations. For more information, visit <https://dirtking.com/pages/disclaimer>



Step 1: Removal

- a. Raise vehicle and remove wheels.
- b. Remove lower skid plate.
- c. Separate sway bar end link from knuckle.
- d. Unbolt the line clamps attached to the upper control arm and knuckle.
- e. Separate the upper control arm from the knuckle.
- f. Remove the shock from the vehicle.



Step 2: Install Dirt King Shock

- a. Install the Dirt King shock with the reservoir hose pointing towards the front of the vehicle.
- b. Apply blue thread locker to upper mounting bolts and torque to **35ft lbs.**
- c. Apply blue thread locker to factory lower shock bolt and torque to **61ft lbs.**
- d. Install upper control arm and reattach line clamps. Torque upper control arm hardware to manufacture's spec.

Note: Aftermarket upper control arms are required with these shocks to allow for the additional down travel that the shocks provide.



Step 3: Install Reservoir Mount

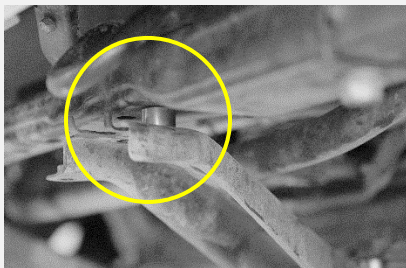
- a. Unbolt factory sway bar bracket and discard factory hardware.
- b. Install Dirt King reservoir bracket to the chassis. Insert the longer supplied bolts into the counter bore holes and torque to **37ft lbs.**
- c. Install the factory sway bar mount to the Dirt King reservoir bracket with the shorter supplied bolts. Torque to **37ft lbs.**

Note: Step 3b will need to be completed on the left and right side before starting step 3c.



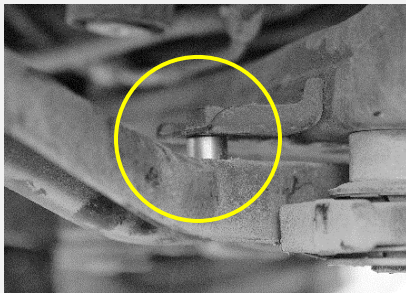
Step 4: Mount Reservoir

- a. Mount Dirt King reservoir to bracket.
- b. Torque socket head bolts for the clamps to **12ft lbs.** Ensure the reservoir hose is not contacting any components. Rotate the reservoir in the clamps to reposition the hose if needed.

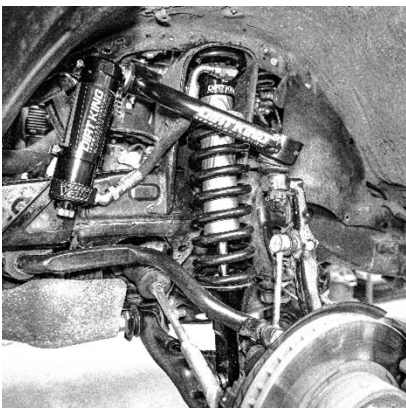


Step 5: Install Skid Plate Spacers

- a. Remove skid plate supports.
- b. Place the spacers in between the skid plate supports and the chassis. Torque bolts to **70ft lbs.**



Note: Not all models require the skid plate spacers to be installed. Check if the skid plate spacers are needed by rotating the sway bar up and down. If the sway bar contacts the skid plate supports, then the spacers must be installed.



Step 6: Final Assembly

- a. Reconnect sway bar link and torque to **52ft lbs.**
- b. Reinstall lower skid plate.
- c. Repeat steps for opposite side.
- d. Reinstall wheels and torque lug nuts to your wheel manufacturer's specs.
- e. Have the vehicle aligned at a qualified shop. If your vehicle is equipped with Advanced Driver Assistance Systems (ADAS), ensure it is recalibrated.

For warnings and disclaimers visit <https://dirtking.com/pages/disclaimer>.