

Parts Included

Quantity	Item Description	Part#
1	Driver Spindle	DK-811905-A1300
1	Passenger Spindle	DK-811905-A1400
2	Hub Spacer	DK-811905-A1208

Please check that all items are present before installation. If for any reason, there is an item or items missing send an email to sales@dirtking.com with proof of purchase and a picture of parts received.



Before installing, read all instructions. Only certified mechanics should install Dirt King products. Mandatory wheel alignment and ADAS calibration at certified facilities are required after suspension modifications. Failure to do so can lead to handling problems and safety risks. Dirt King is not responsible for damages from improper installation or misuse. Adhere to your vehicle manufacturer's recommendations. For more information, visit <https://dirtking.com/pages/disclaimer>



1. Raise the vehicle and prepare for installation.

- a. Safely support the vehicle.
- b. Remove the front tires.



2. Remove Brake Assembly

- a. Remove the two bolts securing the brake caliper, then remove from vehicle. Support the caliper to prevent brake lines from binding or stretching.
- b. Remove front brake rotor.

NOTE: Do not loosen any brake line fittings or the brakes will need to be bled.



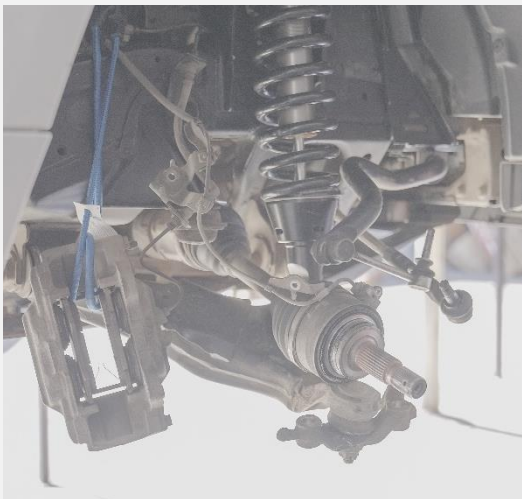
3. Remove Front Axle Shaft Nut

- a. Remove center dust cap.
- b. Remove cotter pin and lock cap.
- c. Remove axle nut.



4. Remove Front Axle Hub Assembly

- a. Remove the 4 bolts.
- b. Using a dead blow hammer, separate the front drive shaft from the hub assembly.
- c. Remove front axle hub assembly and brake dust shield.



5. Remove Steering Knuckle

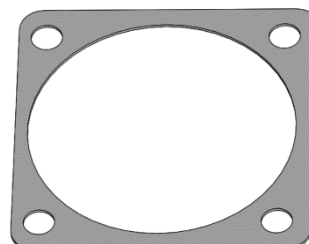
- a. Unbolt the bracket securing the brake line and ABS line to the knuckle. Unbolt the speed sensor from the knuckle near the hub.
- b. Remove tie rod nut and disconnect from the knuckle using a ball joint separator tool.
- c. Remove sway bar link.
- d. Remove the two lower ball joint attachment bolts.
- e. Disconnect the upper control arm ball joint front from the knuckle using a ball joint separator tool.
- f. Remove steering knuckle.
- g. Remove sway bar assembly.



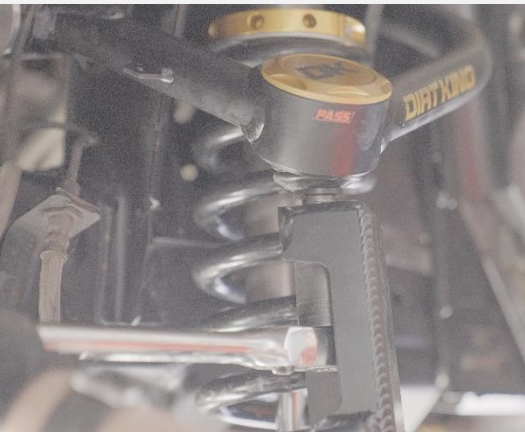
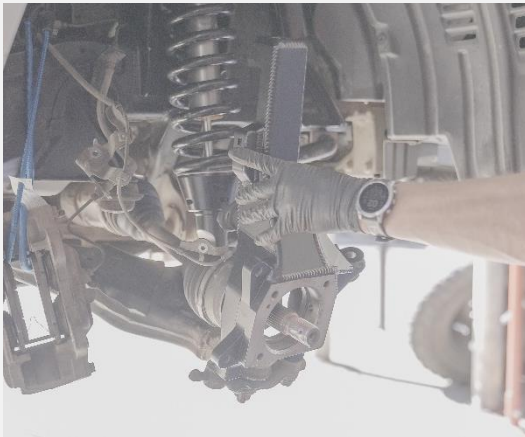
6. Modify Brake Dust Shield

- a. If retaining the dust shield, cut out the areas outlined in red.
- b. If discarding the dust shield, use provided spacer in its place.

NOTE: Do not use both the dust shield and provided spacer.



SPACER



7. Dirt King Knuckle Installation

- a. For 4WD models first install the axle oil seal to the inside of the Dirt King knuckle. For 2WD models install the grease retainer cap to the inside of the Dirt King knuckle.
- b. Install lower ball joint attachment bolts to the Dirt King knuckle and torque to **118ft lbs.**
- a. Install upper control arm with the cotter pin hole orientated perpendicular to the knuckle face. Torque upper control arm to manufacturer's spec. Dirt King ball joint upper control arms torque spec is **81ft lbs.**
- c. Install front axle hub and dust shield or spacer. Apply grease to the hub O-ring and insert into the knuckle. Torque bolts the 4 hub bolts to **59ft lbs.**
- d. Install front axle shaft nut and torque to **173ft lbs.** Install lock cap, new cotter pin, and dust cap.
- e. Install front brake rotor.
- f. Install brake caliper. Torque bolts to **91ft lbs.**
- g. Install tie rod. Torque castle nut to **67ft lbs.** and insert new cotter pin.
- h. Install speed sensor to knuckle. Torque bolt to **75in lbs.**
- i. Install brake line bracket to the knuckle and torque to **21ft lbs.**

8. Review your work and repeat steps to other side of vehicle.

9. Reinstall wheels. Perform wheel alignment and ADAS recalibration.

- a. Reinstall wheels and torque lug nuts to your wheel manufacturer's specs.
- b. Have the vehicle aligned at a qualified shop. If your vehicle is equipped with Advanced Driver Assistance Systems (ADAS), ensure it is recalibrated at a certified facility.

For warnings and disclaimers visit <https://dirtking.com/pages/disclaimer>.