



SDHQ Motorsports
190 S McQueen Rd
Ste 109 Gilbert, AZ 85233
www.SDHQoffroad.com

Product Packing List

Product: SDHQ-83-1206-G2

Description: SDHQ Built 2016-Current Titan A-Pillar
Light Mount Kit

_____ (1) SDHQ Driver Side A-Pillar Light Mount	SDHQ-83-1206-G2-A
_____ (1) SDHQ Passenger Side A-Pillar Light Mount	SDHQ-83-1206-G2-B
_____ (1) SDHQ Driver Side Hold Down Bracket	SDHQ-83-1206-G2-C
_____ (1) SDHQ Passenger Side Hold Down Bracket	SDHQ-83-1206-G2-D
_____ (1) Hardware Package	SDHQ-83-1206-G2-HW
_____ (4) #14 x 1" Isolated Hex Head Self-threading Screws	
_____ (4) 8" Push-in Zip Ties	
_____ (2) ¼" - 20 x ¾" S.S. Hex Head Bolt	
_____ (2) ¼" - 20 S.S. Nylock Nut	
_____ (4) ¼" S.S. Washer	

Inspected and Packaged By: _____ Date: _____

For questions or help with the installation, please email help@sdhqoffroad.com
Store front hours: Mon. - Fri. 8:00am - 5:30pm and Sat. 9:00am - 2:00pm Arizona Time.



SDHQ Motorsports
 190 S McQueen Rd
 Ste 109 Gilbert, AZ 85233
www.SDHQoffroad.com

INSTALLATION INSTRUCTIONS

Product: SDHQ-83-1206-G2

Description: SDHQ Built 2016-Current Titan A-Pillar Light Mount Kit

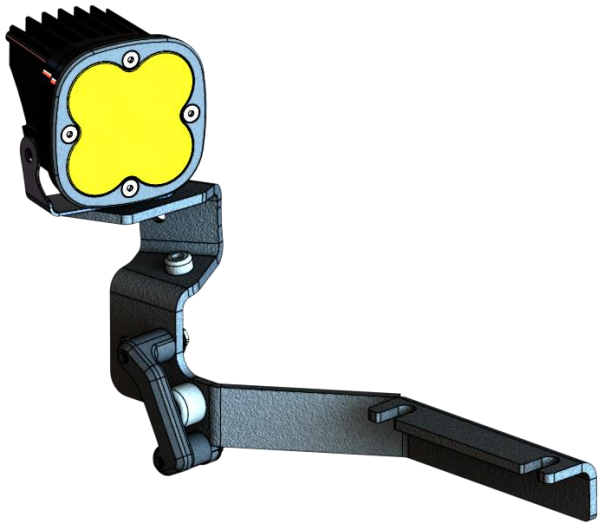


<u>Parts List</u>	<u>Hardware List</u>	<u>Required Tools</u>
(1) SDHQ Driver Side A-Pillar Mount SDHQ-83-1206-G2-A (1) SDHQ Passenger Side A-Pillar Mount SDHQ-83-1206-G2-B (1) SDHQ Driver Side Hold Down Clip SDHQ-83-1206-G2-C (1) SDHQ Passenger Side Hold Down Clip SDHQ-83-1206-G2-D (1) Hardware Package SDHQ-83-1206-G2-HW	(4) #14 x 1" Isolated Hex Head Self-threading Screws (4) 8" Push-in Zip Ties (2) 1/4" - 20 x 3/4" S.S. Hex Head Bolt (2) 1/4" - 20 S.S. Nylock Nut (4) 1/4" S.S. Washer	12mm Socket 3/8" Socket Ratchet Masking Tape Hood Prop
Tech Notes		
Fitment: 2016-Current Nissan Titan/XD Fits Baja Designs Squadrons and XL80 Lights No cutting or drilling required Approx. Install Time: 1 Hours (not including wiring)		

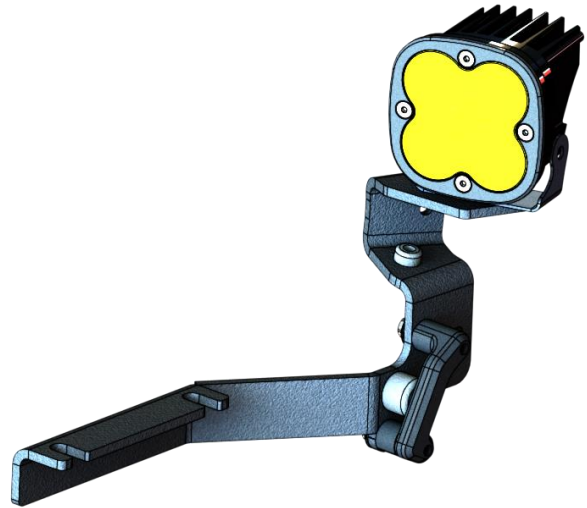
*****READ ALL INSTRUCTIONS THOROUGHLY FROM START TO FINISH BEFORE BEGINNING INSTALLATION! *****

For questions or help with the installation, please email help@sdhqoffroad.com
 Store front hours: Mon. – Fri. 8:00am – 5:30pm and Sat. 9:00am – 2:00pm Arizona Time.

83-1206-G2



Passenger Side Mount



Driver Side Mount



Passenger Side Hold Down Clip



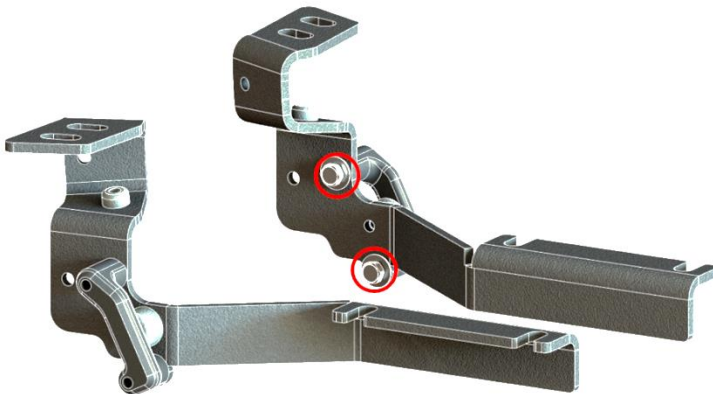
Driver Side Hold Down Clip

Installation Instructions:

1. Unbox your SDHQ Titan A-Pillar Light Mount System and lay the parts out on a clean table. Verify that all parts are present and familiarize yourself with them.
2. Open your hood and place a hood prop to support during installation. Using masking tape, tape off the top outer edges of the hood by the cowl and top back edges of the fenders for protection. Start on the driver side hood hinge with the (2) 12mm nuts, mark the hood and hinge to ensure the hood is still aligned correctly after install. Loosen both nuts enough to slide in the mount underneath. Once the mount is positioned correctly tighten the (2) 12mm nuts. Repeat this step for the passenger side mount.



3. Use the pictures below to correctly orient the driver side hold down clip. The hold down clips will be installed using the provided (2) #14 hex head screws circled in red. Use a 3/8" socket to firmly tighten the two bolts. Repeat this step for the passenger side hold down clip.



4. To complete this install you will be using (4) of the provided push in zip ties. Insert (2) of the zip ties into the circled holes for the driver side and the other (2) for the passenger side.



5. Enjoy your new SDHQ Built Titan A-Pillar Light Mount System!

*****Double check all hardware is installed correctly and tight*****

*****Re-torque ALL bolts after 100 miles*****



**190 S McQueen Rd
Ste 109 Gilbert, AZ 85233
www.sdhqoffroad.com**

Follow us on:



For questions or help with the installation, please email help@sdhqoffroad.com
Store front hours: Mon. – Fri. 8:00am – 5:30pm and Sat. 9:00am – 2:00pm Arizona Time.