



**SDHQ Motorsports**  
**190 S McQueen Rd**  
**Ste 109 Gilbert, AZ 85233**  
**Phone: 480-633-2929**

---

## Product Packing List

**Product:** SDHQ-79-1201-S4

**Description:** **2020+ GMC 2500/3500 Stock Bumper 20"**  
**Light Bar Mount**

\_\_\_\_\_ (1) SDHQ 20" Light Bar Mount

SDHQ-79-1201-S4

\_\_\_\_\_ (1) Hardware Package

SDHQ-79-1201-S4-HP

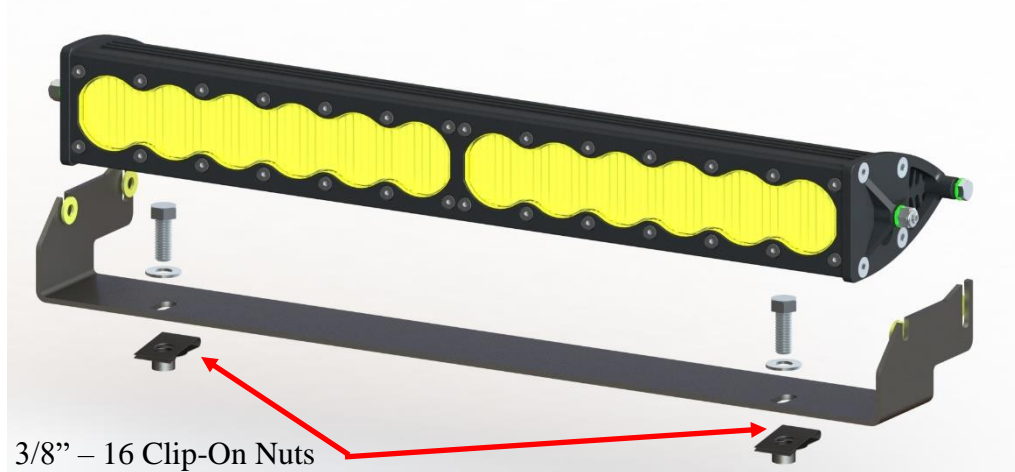
\_\_\_\_\_ (2) 3/8" - 16 Clip-On Barrel Nut

\_\_\_\_\_ (4) 1/4" Grade 8 Washers

**Inspected and Packaged By:** \_\_\_\_\_ **Date:** \_\_\_\_\_

For questions or help with the installation, please call SDHQ Offroad @ 480-633-2929  
Mon.-Fri. 8:00am-5:30pm and Sat. 8:00am-3:30pm Arizona Time. [www.sdhqoffroad.com](http://www.sdhqoffroad.com)

Exploded View shown with Baja Designs Onx6 20" Light Bar



For questions or help with the installation, please call SDHQ Offroad @ 480-633-2929  
Mon.–Fri. 8:00am–5:30pm and Sat. 8:00am–3:30pm Arizona Time. [www.sdhqoffroad.com](http://www.sdhqoffroad.com)



SDHQ Motorsports  
 190 S McQueen Rd  
 Ste 109 Gilbert, AZ 85233  
 Phone: 480-633-2929

## INSTALLATION INSTRUCTIONS

**Product:** SDHQ-79-1201-S4

**Description:** 2020+ GMC 2500/3500 Stock Bumper 20" Light Bar Mount



<b>Parts List</b>	<b>Hardware List</b>	<b>Required Tools</b>
(1) SDHQ 20" Light Bar Mount SDHQ-79-1201-S4 (1) Hardware Package SDHQ-79-1201-S4-HP	(2) 3/8" – 16 Clip-On Barrel Nut (4) 1/4" Grade 8 Washers	9/16" Socket/Wrench 7/16" Socket/Wrench Plastic Panel Removal Tool Body Saw Flush Cuts Dremel/Drum Sander

### **Tech Notes**

Does not fit Chevy 2500/3500.  
 Fits Baja Designs 20" S8 or Onx6 Light Bars.  
 Supplied (4) 1/4" Grade 8 Washers are for Onx6 Light Bars.  
 Uses 3/8" Hardware supplied with the light bar for mounting to the vehicle.  
 Cutting the grill and lower grill mount are required for fitment.  
**Approx. Install Time: 2 Hours (not including wiring)**

\*\*\*READ ALL INSTRUCTIONS THOROUGHLY FROM START TO FINISH BEFORE BEGINNING INSTALLATION!\*\*\*

For questions or help with the installation, please call SDHQ Offroad @ 480-633-2929  
 Mon.–Fri. 8:00am–5:30pm and Sat. 8:00am–3:30pm Arizona Time. [www.sdhqoffroad.com](http://www.sdhqoffroad.com)

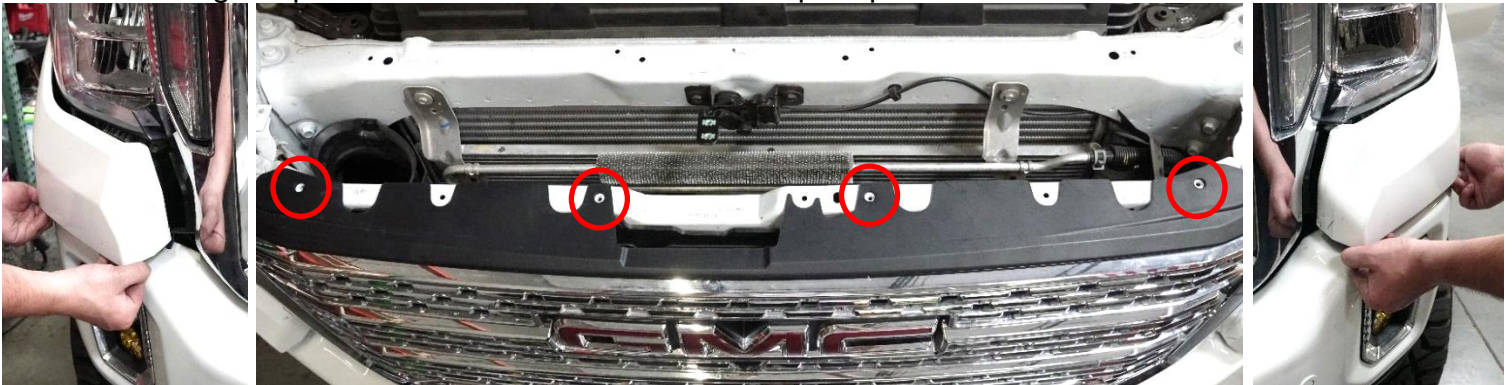


## **Installation Instructions:**

1. Start by unboxing your light bar and SDHQ stock bumper light bar mount. Familiarize yourself with the parts and check to make sure all hardware is present.
2. Open the hood and locate the front induction box. This will need to be detached by removing the (9) plastic clips holding it in. Pop the clips and set them to the side with the induction box.



3. **Prepping the Grille.** Remove the (4) 10mm bolts on top of the grille, circled below in red. Next, the front fender panels will need to be partially removed by pulling the front clip free but leaving the panel attached as shown below. Repeat process for both sides.



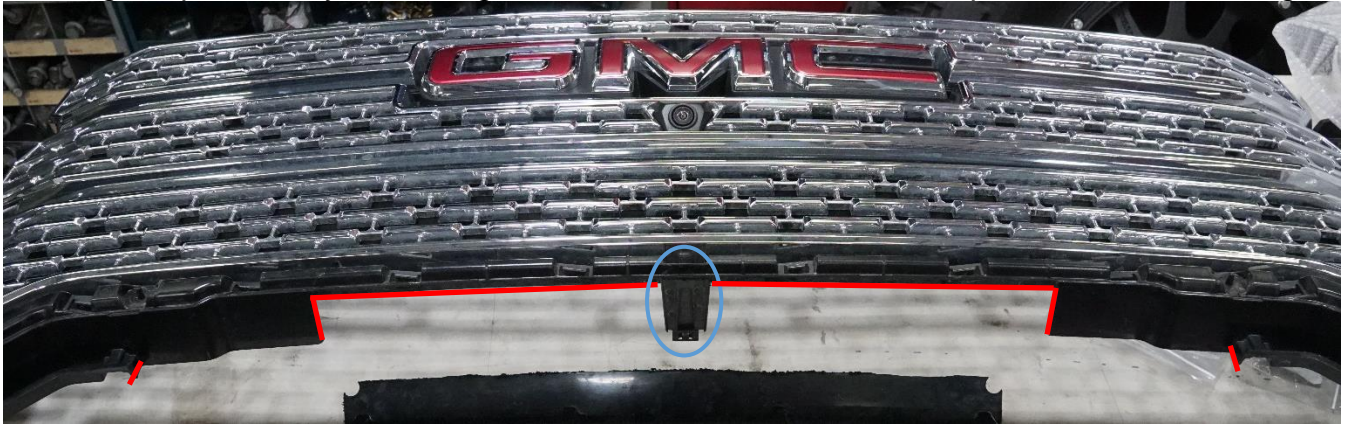
4. **Removing the Grille.** Start by unclipping the top edge of the grille as shown. Then carefully pull out the bumper from the driver side popping all (8) clips holding it to the vehicle. The front fender panels will need to be lifted to allow the grille to slide out from behind. When removing the passenger side of the grille the front camera wire will need to be disconnected shown below in blue.



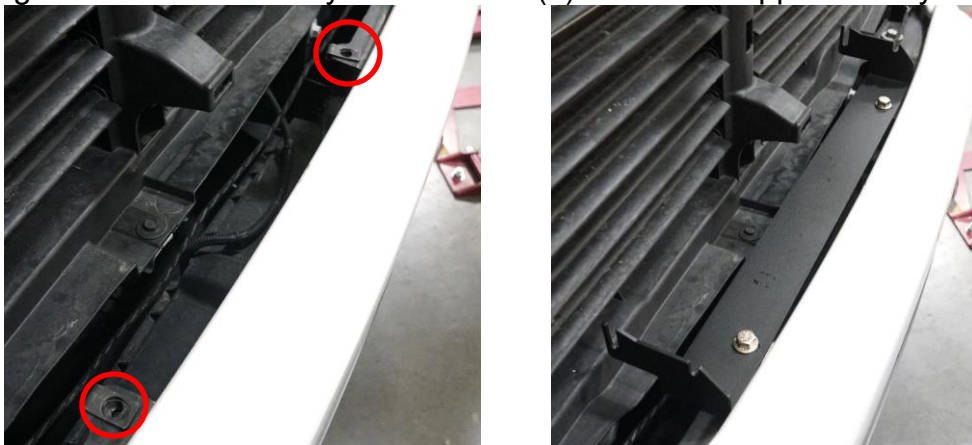
For questions or help with the installation, please call SDHQ Offroad @ 480-633-2929  
Mon.-Fri. 8:00am-5:30pm and Sat. 8:00am-3:30pm Arizona Time. [www.sdhqoffroad.com](http://www.sdhqoffroad.com)



5. **Cutting the Grille.** Use a pair of flush cuts to start the vertical cuts. Use a body saw to finish cutting the piece away from the grille. Do not remove the bottom clip, in blue, when cutting.



6. Slide the supplied (2) 3/8" Clip-On Nuts on to the bumper as shown below. Place the mount on top aligning the holes and loosely thread in the (2) 3/8" bolts supplied with your light bar.



7. **Install your Light Bar.** Use a body saw trim the lower center grill mount to fit the profile of the light bar if required. Check fitment by placing the light bar into the mount and remove more material as needed using a dremel with a barrel sander attachment. Place the 1/4" washers on the between the mount and light bar when running Onx6 Light Bars.



8. Once fitment is correct the light bar can then be tightened to the mount at the desired angle. Adjust the light bar mount as necessary and tighten down the 3/8" mounting hardware.
9. Route the wiring for the light bar before replacing any components.
10. Replace your grille, fender panels and induction box in reverse order as they were removed reusing all factory hardware and clips. Enjoy your SDHQ light bar mount!

**\*\*\*Double check all hardware is installed correctly and tight\*\*\***

**\*\*\*Re-torque ALL bolts after 100 miles\*\*\***



190 S McQueen Rd  
Ste 109 Gilbert, AZ 85233  
Phone: 480-633-2929 | Fax: 480-633-1791  
[www.sdhqoffroad.com](http://www.sdhqoffroad.com)

Follow us on:



Facebook



Instagram

For questions or help with the installation, please call SDHQ Offroad @ 480-633-2929  
Mon.–Fri. 8:00am–5:30pm and Sat. 8:00am–3:30pm Arizona Time. [www.sdhqoffroad.com](http://www.sdhqoffroad.com)