



**SDHQ Motorsports**  
190 S McQueen Rd  
Ste 109 Gilbert, AZ 85233  
Phone: 480-633-2929

---

## Product Packing List

**Product:** SDHQ-77-1206-54

**Description:** 19+ GMC Sierra 1500 A-Pillar Light Mounts

_____ (1) Driver Side Mount	SDHQ-77-1206-54-A
_____ (1) Passenger Side Mount	SDHQ-77-1206-54-B
_____ (1) Driver Side Support Bracket	SDHQ-77-1206-54-C
_____ (1) Passenger Side Support Bracket	SDHQ-77-1206-54-D
_____ (2) Aluminum Spacers	SDHQ-77-1206-54-E
_____ (1) Hardware Package	SDHQ-77-1206-54-F
_____ (2) M8 - 1.25 x 45mm S.S. Hex Head Bolt	
_____ (2) 5/16" S.S Washer	
_____ (2) ¼" - 20 x ¾" S.S. Button Head Bolt	
_____ (2) M6 - 1.0 x 20mm S.S. Button Head Bolt	
_____ (4) ¼" S.S. Washers	
_____ (2) ¼" - 20 x 17/32" Clip on Barrel Nut	
_____ (2) SDHQ Silicone Protective Pads	

Inspected and Packaged By: \_\_\_\_\_ Date: \_\_\_\_\_

For questions or help with the installation, please call SDHQ Offroad @ 480-633-2929  
Mon.-Fri. 8:00am-5:30pm and Sat. 8:00am-3:30pm Arizona Time. [www.sdhqoffroad.com](http://www.sdhqoffroad.com)

**For questions or help with the installation, please call SDHQ Offroad @ 480-633-2929  
Mon.–Fri. 8:00am–5:30pm and Sat. 8:00am–3:30pm Arizona Time. [www.sdhqoffroad.com](http://www.sdhqoffroad.com)**

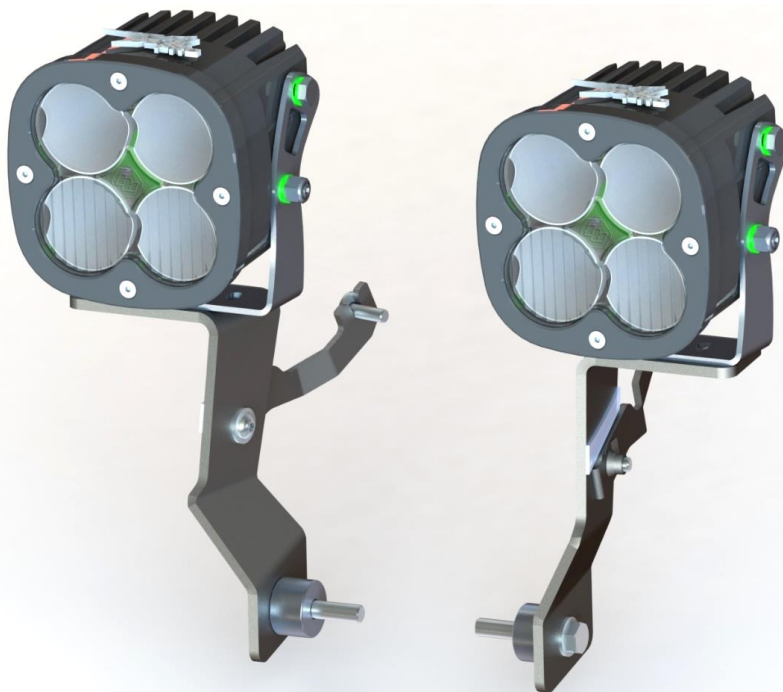


SDHQ Motorsports  
 190 S McQueen Rd  
 Ste 109 Gilbert, AZ 85233  
 Phone: 480-633-2929

## INSTALLATION INSTRUCTIONS

**Product:** SDHQ-77-1206-S4

**Description:** 19+ GMC Sierra 1500 A-Pillar Light Mounts



<b>Parts List</b>	<b>Hardware List</b>	<b>Required Tools</b>
(1) Driver Side Mount SDHQ-77-1206-S4-A (1) Passenger Side Mount SDHQ-77-1206-S4-B (1) Driver Side Support Bracket SDHQ-77-1206-S4-C (1) Passenger Side Support Bracket SDHQ-77-1206-S4-D (2) Aluminum Spacers SDHQ-77-1206-S4-E (1) Hardware Package SDHQ-77-1206-S4-F	(2) M8 – 1.25 x 45mm S.S. Hex Head Bolt (2) 5/16" S.S Washer (2) 1/4" – 20 x 3/4" S.S. Button Head Bolt (2) M6 – 1.0 x 20mm S.S. Button Head Bolt (4) 1/4" S.S. Washers (2) 1/4" – 20 x 17/32" Clip on Barrel Nut (2) SDHQ Silicone Protective Pads	10mm, 13mm Socket Extension Ratchet Torx T30 Bit Hood Prop Blue Painters Tape 5/32" and 4mm Hex Drive Sharpie Flush Cut Pliers Razor Blade

### **Tech Notes**

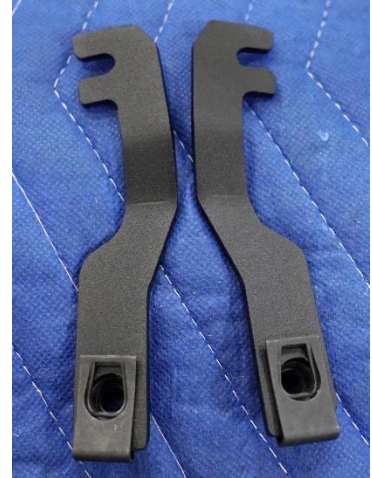
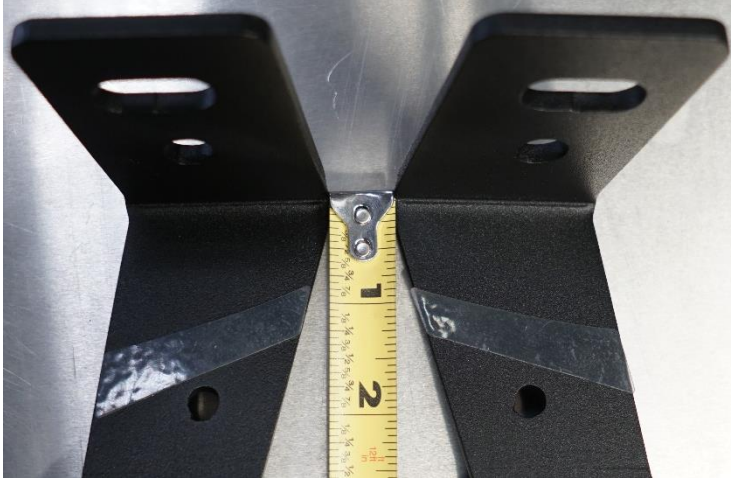
Use Anti-Seize on all Stainless Steel (S.S.) hardware.  
 Trimming of cowl end caps is required.  
 Only fits 2019+ GMC 1500  
**Approx. Install Time: 1 Hour (not including wiring)**

For questions or help with the installation, please call SDHQ Offroad @ 480-633-2929  
 Mon.–Fri. 8:00am–5:30pm and Sat. 8:00am–3:30pm Arizona Time. [www.sdhqoffroad.com](http://www.sdhqoffroad.com)

**\*\*\*READ ALL INSTRUCTIONS THOROUGHLY FROM START TO FINISH BEFORE BEGINNING INSTALLATION! \*\*\***

## **Installation Instructions:**

1. Unbox and verify all parts are accounted for. Familiarize yourself with the parts and diagrams.
2. Locate (2) Silicone Protective Pads provided in the hardware kit. Install on mounts as pictured below (make sure surface is clean for best adhesion). Remove the clear hard plastic cover. Install (2) ¼" – 20 Clip on Barrel Nuts onto the Support Brackets as shown below.



3. Apply masking tape to hood and fender where you will be working. Remove antenna. Open the hood and remove the cowl end caps. Support the hood with a hood prop. Remove the (2) 10mm head bolts securing the antenna mount.



4. Starting on the driver side, remove the 13mm head bolt and Torx T30 head bolt circled below.



For questions or help with the installation, please call SDHQ Offroad @ 480-633-2929  
Mon.–Fri. 8:00am–5:30pm and Sat. 8:00am–3:30pm Arizona Time. [www.sdhqoffroad.com](http://www.sdhqoffroad.com)

5. Position the driver side support bracket as shown. Thread (1) M6 bolt and (1) 1/4" washer into the threaded hole to secure the support bracket.

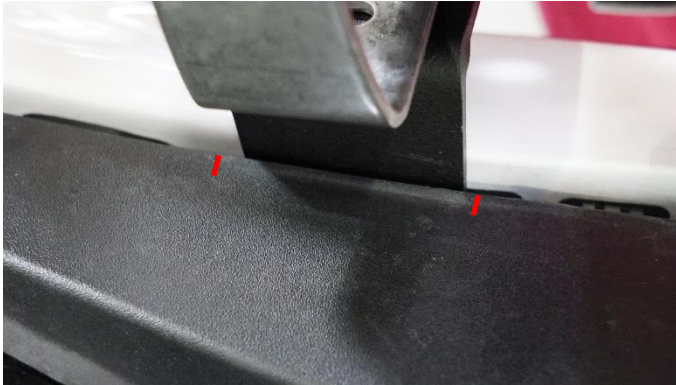


6. Carefully lower the driver side mount between the hood hinge and fender. Once lowered, insert (1) M8 bolt and (1) 5/16" washer through the lower mounting hole. Place (1) aluminum spacer between the mount and the hood hinge. Begin threading the M8 bolt. Align the driver mount and support bracket, and thread (1) 1/4" bolt and washer into the support bracket.



7. With all of the driver side hardware installed, tighten the M6 Button Head Bolt then the M8 Hex Head Bolt, and then the 1/4" Button Head Bolt.
8. Repeat Steps 4-7 for the passenger side. Once the mount is tight, tighten the (2) 10mm head bolts securing the antenna mount to the truck.
9. With both A-Pillar mounts installed, install and wire your lights. Bigger lights such as a Baja XL series will mount to the outer slot.

**10. Trimming Cowl End Caps:** Now you will need to trim your cowl end caps. Position the driver side cowl end cap on the fender as if you were going to install it. Mark 1/8" outside of where the cowl will contact the mount. Remove the cowl end cap. Remove 1/4" of material between the marks where the cowl contacts the mount. Repeat for the passenger side.



**11.** Install the trimmed cowl end caps and antenna. Finish wiring your lights and enjoy your new SDHQ A-Pillar Light Mounts!

**\*\*\*Double check all hardware is installed correctly and tight\*\*\***

**\*\*\*Re-torque ALL bolts after 100 miles\*\*\***



190 S McQueen Rd  
Ste 109 Gilbert, AZ 85233  
Phone: 480-633-2929 | Fax: 480-633-1791  
[www.sdhqoffroad.com](http://www.sdhqoffroad.com)

Follow us on:



Facebook



Instagram

For questions or help with the installation, please call SDHQ Offroad @ 480-633-2929  
Mon.–Fri. 8:00am–5:30pm and Sat. 8:00am–3:30pm Arizona Time. [www.sdhqoffroad.com](http://www.sdhqoffroad.com)