



SDHQ Motorsports
190 S McQueen Rd
Ste 109 Gilbert, AZ 85233
Phone: 480-633-2929

Product Packing List

Product: SDHQ-70-1141-G3

Description: GM Silverado/Sierra 2014-2019 1500,
2015-2019 2500+ Switch Pro PMM

- | | | |
|-------|--|-------------------|
| _____ | (1) SDHQ Power Module Mount | SDHQ-70-1141-G3-A |
| _____ | (1) Hardware package | SDHQ-70-1141-G3-B |
| _____ | (1) 5/16"-18 x 3/4" S.S. Button Head Bolt | |
| _____ | (2) 5/16" S.S. SAE Washers | |
| _____ | (1) 5/16" S.S. Nylock Nut | |
| _____ | (2) #8-32 x 1/2" S.S. Button Head Bolt | |
| _____ | (2) .304 x .169 x .032 Mil. Spec. S.S. Washers | |
| _____ | (1) Push in Zip Tie | |

Inspected and Packaged By: _____ Date: _____

For questions or help with the installation, please call SDHQ Offroad @ 480-633-2929
Mon.-Fri. 8:00am-5:30pm and Sat. 8:00am-3:30pm Arizona Time. www.sdhqoffroad.com



SDHQ Motorsports
190 S McQueen Rd
Ste 109 Gilbert, AZ 85233
Phone: 480-633-2929

INSTALLATION INSTRUCTIONS

Product: SDHQ-70-1141-G3

Description: GM Silverado/Sierra 2014-2019 1500,
2015-2019 2500+ Switch Pro PMM

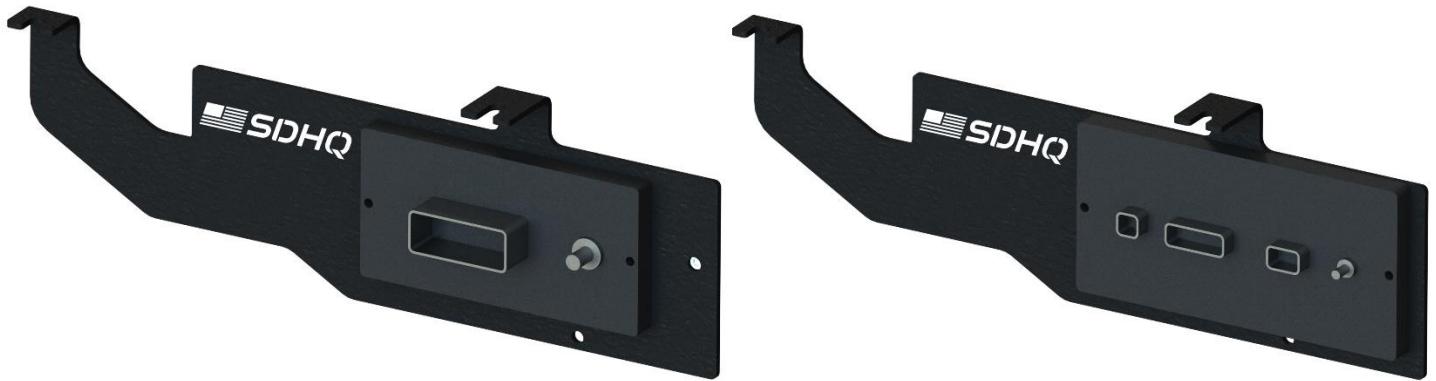


<u>Parts List</u>	<u>Hardware List</u>	<u>Required Tools</u>
(1) SDHQ Power Module Mount SDHQ-70-1141-G3-A (1) SDHQ Hardware Package SDHQ-70-1141-G3-B	(1) 5/16"-18 x 3/4" S.S. Button Head Bolt (2) 5/16" S.S. SAE Washers (1) 5/16" S.S. Nylock Nut (2) #8-32 x 1/2" S.S. Button Head Bolt (2) .304 x .169 x .032 Mil. Spec. S.S. Washers (1) Push in Zip Tie	13mm Socket and Ratchet 13mm Wrench 3/32" and 3/16" Allen Keys

Tech Notes

Use Anti-Seize on all Stainless Steel (S.S.) Hardware
Approx. Install Time: 1 Hour

For questions or help with the installation, please call SDHQ Offroad @ 480-633-2929
Mon.-Fri. 8:00am-5:30pm and Sat. 8:00am-3:30pm Arizona Time. www.sdhqoffroad.com



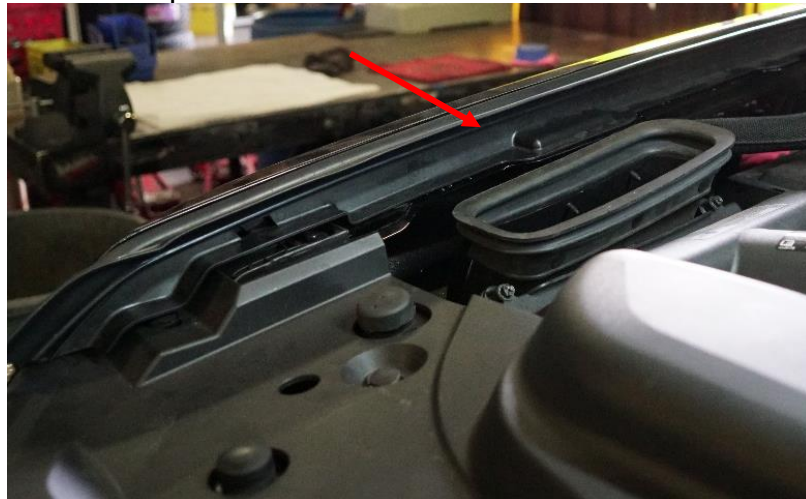
***READ ALL INSTRUCTIONS THOROUGHLY FROM START TO FINISH BEFORE BEGINNING INSTALLATION! ***

Installation Instructions:

1. Unbox all of the parts and familiarize yourself with them.
2. **Pre-Install.** Mount the Switch Pros Power Module to the SDHQ mount using the circled holes that correspond to the kit that was purchased as shown below. The Switch pros power module will bolt to the SDHQ mount by using a 3/32" Allen key, (2) #8 – 32 x 1/2" button head bolts and (2) .304 x .169 x .032 S.S. washers. Connect the Switch Pros ground cable.

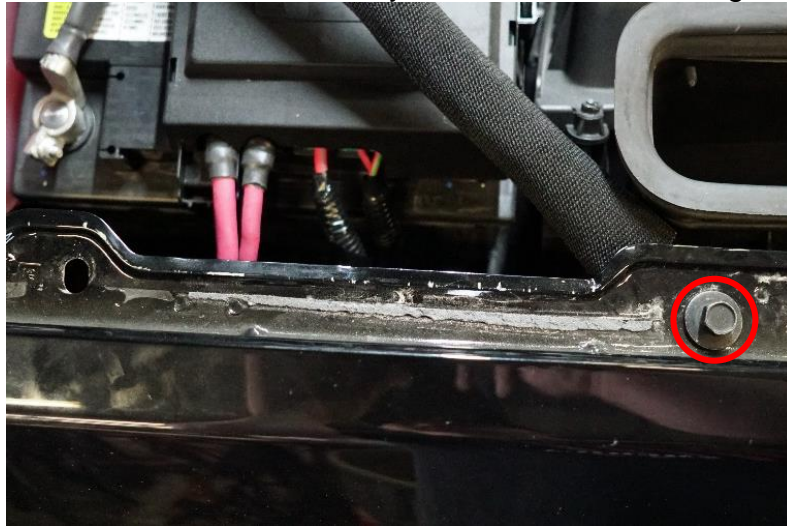


3. Open the hood and remove the passenger side hood trim arrowed below. Unclip the front of the trim from the fender. Pull up and towards the front of the truck to remove the trim.



For questions or help with the installation, please call SDHQ Offroad @ 480-633-2929
Mon.–Fri. 8:00am–5:30pm and Sat. 8:00am–3:30pm Arizona Time. www.sdhqoffroad.com

4. With the hood trim removed, remove the factory bolt circled below using a 13mm socket.



5. **Install the SDHQ Mount.** Place the SDHQ mount and line up the holes as shown below. The front tab will align between the body and engine brace. Tighten the stock hardware in the factory location. Use the provided 5/16" hardware and tighten using a 3/16" Allen Key.



6. Reinstall the passenger side hood trim. Use the supplied zip tie to secure wiring once complete.

Wiring:

Once the Switch-Pros power module is mounted, but BEFORE it is connected to anything else, do the following:

1. Reinstall battery (if battery was removed during installation), and secure factory connections. Start vehicle and confirm that battery is properly installed, connected and grounded.
2. Connect the Switch-Pros Ground wire lug to the negative terminal on the battery (grounding elsewhere will not properly filter noise and will void your product warranty).
3. Plug the 16-pin harness into the power module; be sure it locks in.
4. Connect the red Battery Cable to the positive terminal on the battery. Tighten down both ends, to prevent lug from rotating and possibly causing friction or spark.
5. **Enjoy your SDHQ mounted Switch Pros Power Module!**

For questions or help with the installation, please call SDHQ Offroad @ 480-633-2929
Mon.–Fri. 8:00am–5:30pm and Sat. 8:00am–3:30pm Arizona Time. www.sdhqoffroad.com

*****Double check all hardware is installed correctly and tight*****

*****Re-torque ALL bolts after 100 miles*****



190 S McQueen Rd
Ste 109 Gilbert, AZ 85233
Phone: 480-633-2929 | Fax: 480-633-1791
www.sdhqoffroad.com

Follow us on:



Facebook



Instagram

For questions or help with the installation, please call SDHQ Offroad @ 480-633-2929
Mon.–Fri. 8:00am–5:30pm and Sat. 8:00am–3:30pm Arizona Time. www.sdhqoffroad.com