



SDHQ Motorsports
190 S McQueen Rd
Ste 109 Gilbert, AZ 85233

Product Packing List

Product: SDHQ-56-1651-150

Description: **2014-Current Lexus GX460 Stock Bumper
Winch Mount Skid Plate System**

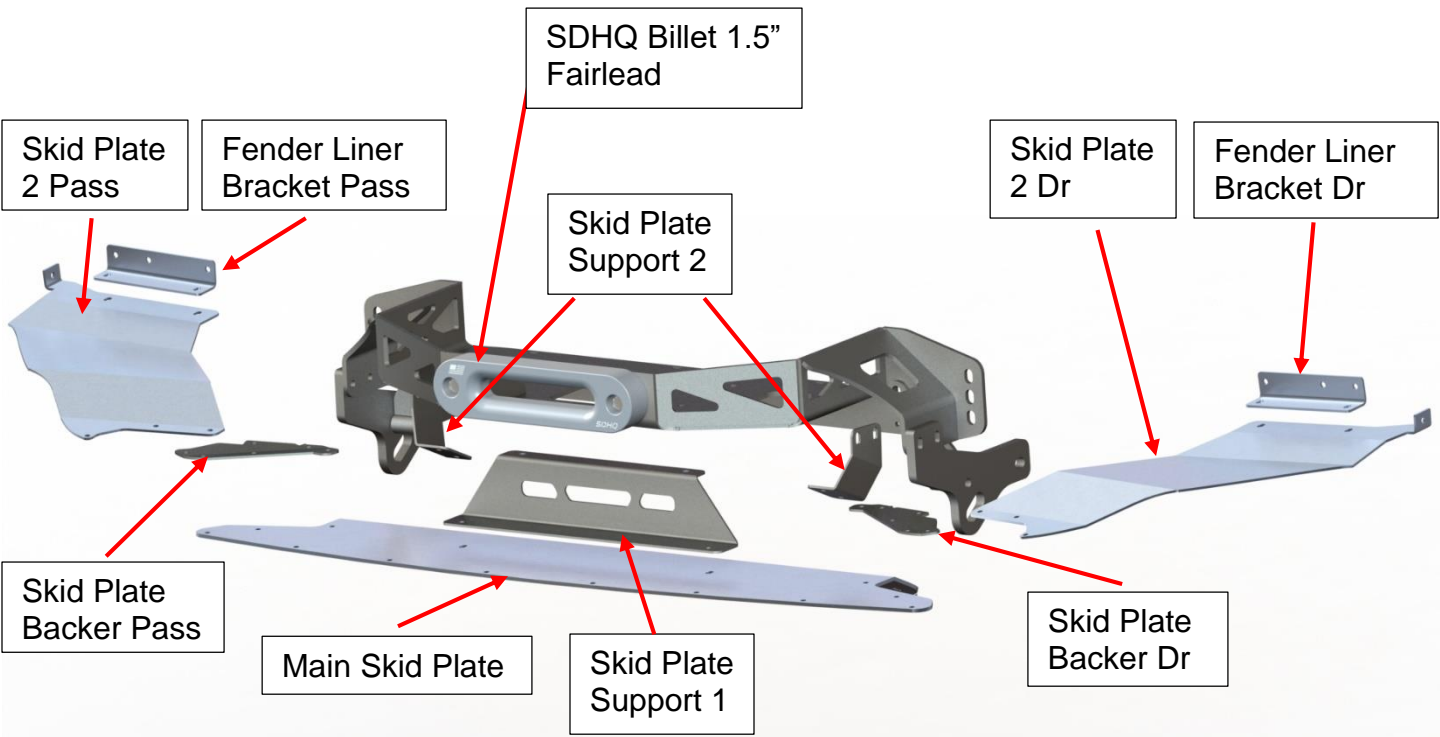
_____	(1) Main Skid Plate	SDHQ-56-1651-150-A
_____	(1) Skid Plate 2 Dr	SDHQ-56-1651-150-B
_____	(1) Skid Plate 2 Pass	SDHQ-56-1651-150-C
_____	(1) Fender Liner Bracket Dr	SDHQ-56-1651-150-D
_____	(1) Fender Liner Bracket Pass	SDHQ-56-1651-150-E
_____	(1) Skid Plate Support 1	SDHQ-56-1651-150-F
_____	(1) Skid Plate Support 2 Dr	SDHQ-56-1651-150-G
_____	(1) Skid Plate Support 2 Pass	SDHQ-56-1651-150-H
_____	(1) Skid Plate Backer Dr	SDHQ-56-1651-150-I
_____	(1) Skid Plate Backer Pass	SDHQ-56-1651-150-J
_____	(1) SDHQ Fairlead Cut Template	SDHQ-56-1651-150-K
_____	(1) Hardware Package	SDHQ-56-1651-150-HP
_____	(28) 1/4"-20 x 1" S.S. Button Head Bolt	
_____	(34) 1/4" S.S. Washers	
_____	(22) 1/4"-20 No-Slip Clip-On Barrel Nut	
_____	(6) 1/4"-20 S.S. Nylock Nut	
_____	(8) 1/4"-20 x 1" S.S. Countersunk Bolt	
_____	(8) SDHQ Delrin Body Washers 1/4" x 1-3/8"W	
_____	(2) M8-1.25 x 30mm S.S. Flange Head	
_____	(10) 3/8" Push-In Rivets	
_____	(1) Tube of Anti-Seize	
_____	(2) 7/16-14 x 2" Grade 8 Bolts	
_____	(4) 7/16 Grade 8 washers	
_____	(2) 7/16-14 Grade 8 Lock Nut	
_____	(1) SDHQ Billet 1.5" Fairlead	SDHQ-00-1650-15

Inspected and Packaged By: _____ **Date:** _____

For questions or help with the installation, please email help@sdhqoffroad.com
Store front hours: Mon. – Fri. 8:00am – 5:30pm and Sat. 9:00am – 2:00pm Arizona Time.



If you have a 2020+ GX460 with the "Sport Design Package" the removal of the extra aero that comes in the package will leave several holes that will not get cut off when trimming the bumper. Use The supplied 3/8" Push-In Rivets to plug the holes





SDHQ Motorsports
 190 S McQueen Rd
 Ste 109 Gilbert, AZ 85233

INSTALLATION INSTRUCTIONS

Product: *SDHQ-56-1651-150*

Description: 2014-Current Lexus GX460 Stock Bumper
 Winch Mount Skid Plate System



<u>Parts List</u>		<u>Hardware List</u>	<u>Required Tools</u>
(1) Main Skid Plate	SDHQ-56-1651-150-A	(34) 1/4"-20 x 1" S.S. Button Head Bolt	7/16" socket/wrench
(1) Skid Plate 2 Dr	SDHQ-56-1651-150-B	(40) 1/4" S.S. Washers	14mm socket/wrench
(1) Skid Plate 2 Pass	SDHQ-56-1651-150-C	(24) 1/4"-20 No-Slip Clip-On Barrel Nut	5/32" Allen head socket/wrench
(1) Fender Liner Bracket Dr	SDHQ-56-1651-150-D	(6) 1/4"-20 S.S. Nylock Nut	Metric Socket Set
(1) Fender Liner Bracket Pass	SDHQ-56-1651-150-E	(8) 1/4"-20 x 1" S.S. Countersunk Bolt	
(1) Skid Plate Support 1	SDHQ-56-1651-150-F	(8) SDHQ Delrin Body Washers 1/4" x 1-3/8"W	-Sufficient tools for cutting bumper plastic; body saw, hole saw, files etc.
(1) Skid Plate Support 2 Dr	SDHQ-56-1651-150-G	(2) M8-1.25 x 30mm S.S. Flange Head	
(1) Skid Plate Support 2 Pass	SDHQ-56-1651-150-H	(10) 3/8" Push-In Rivets	
(1) Skid Plate Backer Dr	SDHQ-56-1651-150-I	(1) Tube of Anti-seize	
(1) Skid Plate Backer Pass	SDHQ-56-1651-150-J	(2) 7/16-14 x 2" Grade 8 Bolts	
(1) Fairlead Cut Template	SDHQ-56-1651-150-K	(4) 7/16 Grade 8 washers	
(1) SDHQ Billet 1.5" Fairlead	SDHQ-00-1650-15	(2) 7/16-14 Grade 8 Lock Nut	

Tech Notes

Fits all Trims of GX460.

Significant cutting of the factory bumper and fender liners is required.

This skid plate system is precisely designed to fit with RCI Style Skid Plates. Others may fit but have not been tested.

Use Anti Seize on all Stainless Steel hardware

****Approx. Install Time = 4-6 Hours (not including installing Winch Mount or Wiring)****

*****READ ALL INSTRUCTIONS THOROUGHLY FROM START TO FINISH BEFORE BEGINNING INSTALLATION!*****

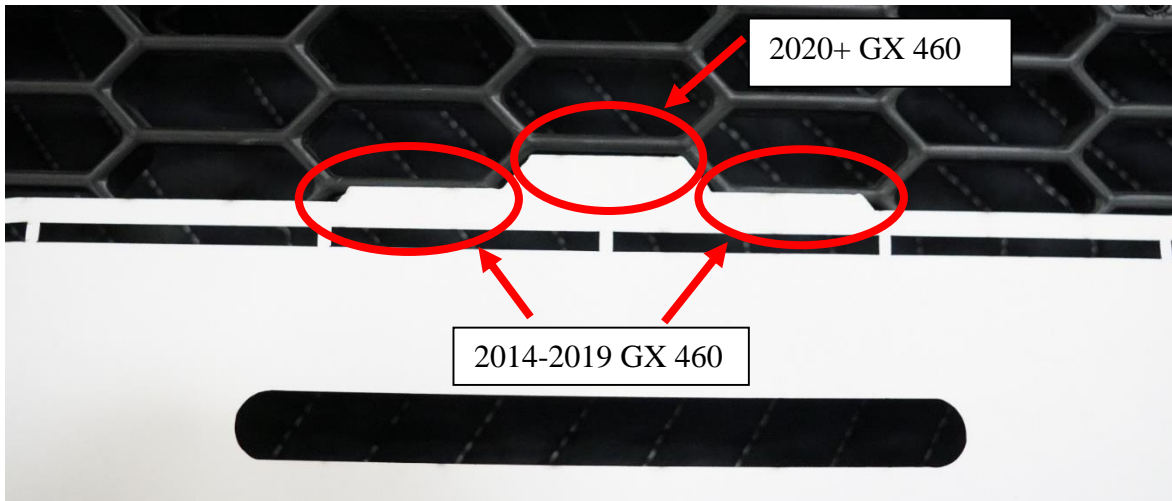
For questions or help with the installation, please email help@sdhqoffroad.com

Store front hours: Mon. – Fri. 8:00am – 5:30pm and Sat. 9:00am – 2:00pm Arizona Time.

Installation Instructions:

1. Begin with 54-1650-G5 Install Instructions and continue until Step 9. Proceed with these instructions after Step 9.

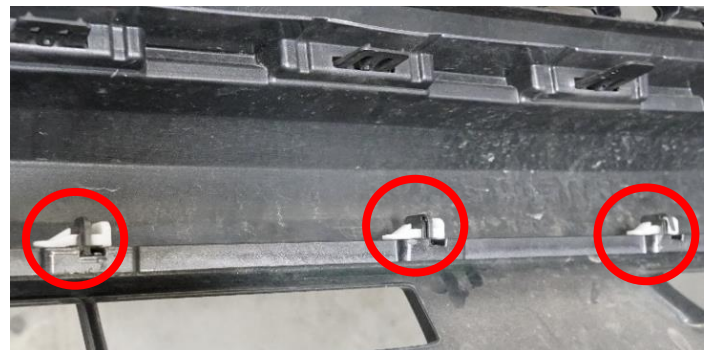
Trimming the factory bumper for Fairlead. Place your GX 460 bumper back onto the vehicle without your fairlead attached, clip into place and put the Fairlead Cut Template on the lower edge of the grille opening in the center of the grille. For 2014-2019 GX460, align the cut template in the center of the grille using the (2) outer hex patterns and 2020+ GX460 use the center hex pattern, trace the outline onto the bumper and remove the bumper to cut. A body saw is recommended for cutting the plastic.



2. Using the 7/16" hardware; install your SDHQ 1.5" Fairlead loosely to the winch mount and check fitment on the cut bumper. Once aligned remove bumper and tighten fairlead.



3. **Cutting the factory front bumper.** Start trimming your bumper by removing the grey center trim on the lower part of the bumper. The trim unclips from the back side of the bumper with 12 small white clips, push the center down in each clip and slide it out. Once all the clips are removed you can separate the trim piece.

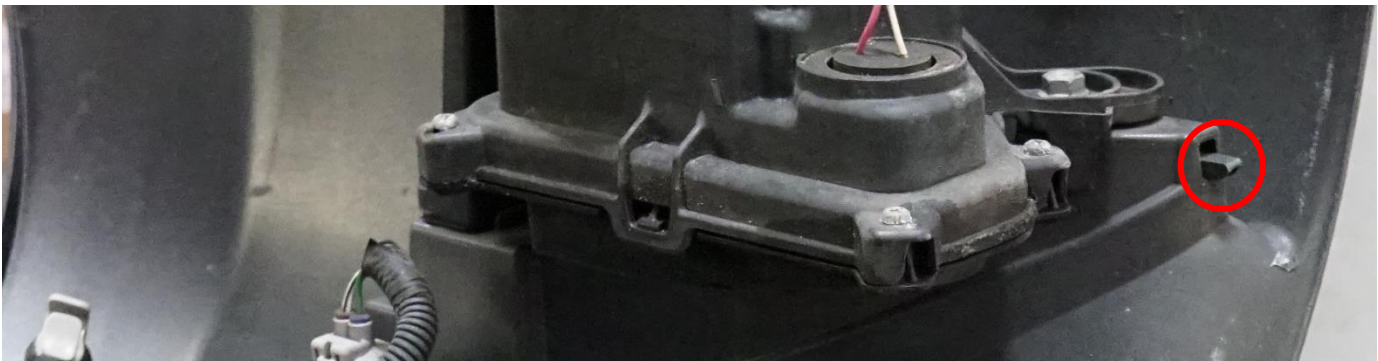


For questions or help with the installation, please email help@sdhqoffroad.com
Store front hours: Mon. – Fri. 8:00am – 5:30pm and Sat. 9:00am – 2:00pm Arizona Time.

4. In order to cut the bumper more accurately, replace the bumper onto the car and clip everything into place, no need to bolt everything in or reconnect anything at this point. You will see a body line that extends from the lower edges of the grill opening to the wheel well under the fog lights. We recommend cutting $\frac{1}{2}$ " under this body line (see pictures below). When cutting, you will leave the center (8) holes on the bumper where the grey trim had been previously. Cut conservatively at first then trim later, and see pictures below for guidance. Clean all edges so they are burr free.



4. Trim the (2) taps off the bottom of the fog lights, so they look like the picture below.



6. Power up your winch and spool your rope per the manufacturer's recommendations. Make sure all of the winch mount hardware is tight. Now, we will now install the skid plate system with your trimmed bumper in place.

For questions or help with the installation, please email help@sdhqoffroad.com
Store front hours: Mon. – Fri. 8:00am – 5:30pm and Sat. 9:00am – 2:00pm Arizona Time.

7. Start by installing (6) of the ¼"-20 Clip-on Barrel nuts on the three Skid Plate Supports and removing the (2) M8 bolts from the front of your underbody skid plate.

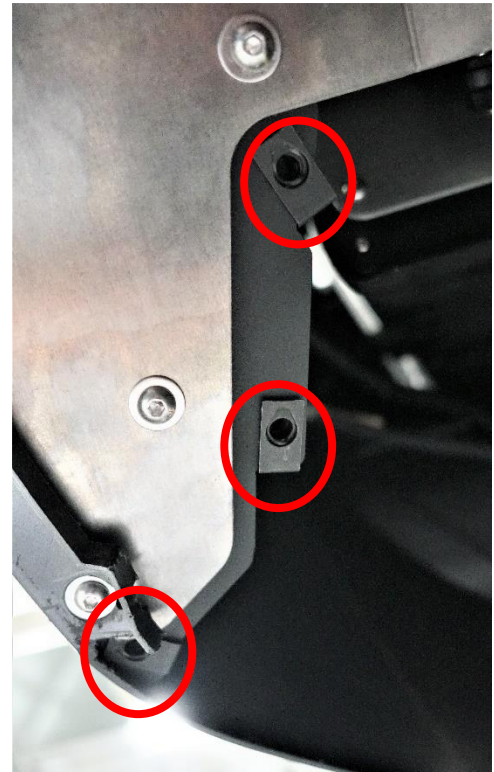
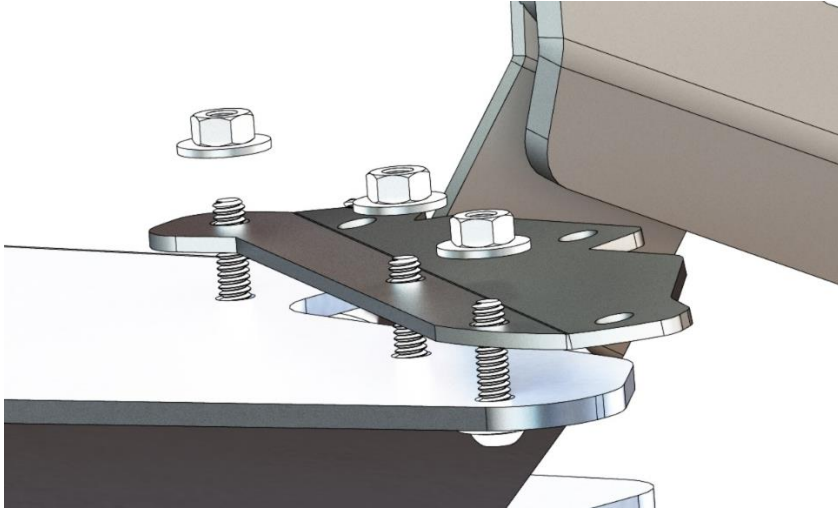


8. Hold up your Main Skid Plate to the Skid Plate Supports and loosely thread in (6) ¼"-20 x 1" bolts and washers and the (2) M8 bolts into the underbody skid, remembering to set the skid plate on the inside of the trimmed bumper lip. Once all the bolts are started, then tighten down the Main Skid Plate. Now, using (6) ¼"-20 bolts and washers, thread in and tighten down the front of the bumper to the Main Skid Plate in the center 6 holes in the bumper. (Note: The slots that exist in the bottom of the bumper might require some clearancing for the ¼"-20 bolts.)

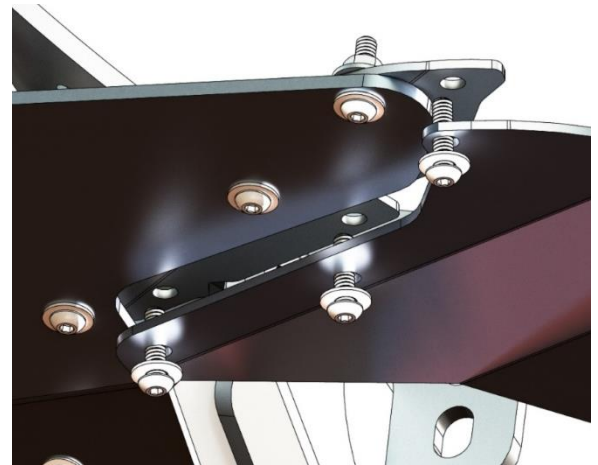


For questions or help with the installation, please email help@sdhqoffroad.com
Store front hours: Mon. – Fri. 8:00am – 5:30pm and Sat. 9:00am – 2:00pm Arizona Time.

9. Mount Skid Plate Backers. Take the Driver and passenger Skid Plate Backers and install them with 1/4"-20 hardware as shown below, the outermost bolt will go through the bumper like the Main Skid Plate. Then place the (3) Clip-on nuts per side once the backer is tight.



10. Mount Side Skid Plates. Starting on Driver side, hold your Skid Plate 2 Driver up to the Skid Plate Backer and bolt into place using 1/4"-20 hardware as shown. Repeat for passenger side.



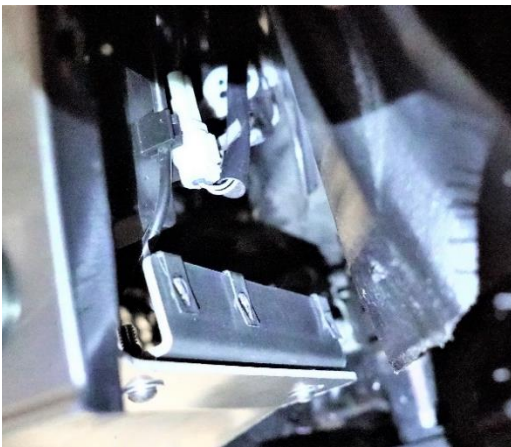
11. With both Side Skid Plates attached, mark the inside of the bumper through the tab on the Skid Plates located toward the rear of the plate. Once you have your mark on the bumper, drill through it with your 5/16" drill bit. Mount a Clip-on nut to the tab on the Side Skid Plates and use a countersunk 1/4"-20 bolt and Delrin Body Washer and secure everything together.



12. Mount Fender Liner Brackets. Starting with the sides with (2) holes, place Clip-on nuts on the Fender Liner Brackets and loosely bolt to the Side Skid Plates as shown. You will now hold the loose fender liner up to the attached Fender Liner Bracket and mark the (3) holes and the height of the Side Skid Plate onto the fender liner. Unbolt the bracket and drill the (3) holes per fender liner with your 5/16" drill bit and trim the fender liners up to the top face of the Side Skid Plates. (Note: The bracket is not symmetrical, the closer (2) holes go toward the outside of the vehicle.)



13. Now that the fender liners are trimmed, pull the Fender Liner Brackets out and place Clip-on nuts over the remainder of the holes. Then replace the Fender Liner Bracket and bolt into place on Skid Plate. Next you will use the remaining delrin body washers and counter sunk 1/4"-20 bolts and bolt the fender liners to the Fender Liner Bracket.



14. Use the provided 1/4" bolts, washers, and lock nuts to mount the bottom of the bumper to the bumper bracket. Check to be sure all hardware is tight and reassemble the rest of your vehicle reversing Steps 3 – 1 in the 4Runner Hidden Winch Mount Install Instructions, 54-1650-G5. Enjoy your **SDHQ Built Skid Plate System** for your 2014-Current Lexus GX460!



For questions or help with the installation, please email help@sdhqoffroad.com
Store front hours: Mon. – Fri. 8:00am – 5:30pm and Sat. 9:00am – 2:00pm Arizona Time.

*****Double check all hardware is installed correctly and tight*****

*****Re-torque ALL bolts after 100 miles*****



190 S McQueen Rd
Ste 109 Gilbert, AZ 85233
www.sdhqoffroad.com

Follow us on:



For questions or help with the installation, please email help@sdhqoffroad.com
Store front hours: Mon. – Fri. 8:00am – 5:30pm and Sat. 9:00am – 2:00pm Arizona Time.