



SDHQ Motorsports
190 S McQueen Rd
Ste 109 Gilbert, AZ 85233
Phone: 480-633-2929

Product Packing List

Product: SDHQ-56-1131-150

Description: **2014+ Lexus GX460 Switch Pros 9100
Overhead Keypad Mount**

_____ (1) SDHQ GX460 Switch Pros 9100 OH Keypad Mount

SDHQ-56-1131-150

_____ (1) Hardware Package

SDHQ-56-1131-150-HP

_____ (4) #10- 24 x 3/4" S.S. Button Head Bolts

_____ (4) #10-24 S.S. Square Nuts

_____ (4) #10 S.S. Washers

Inspected and Packaged By: _____ **Date:** _____

For questions or help with the installation, please call SDHQ Offroad @ 480-633-2929
Mon.-Fri. 8:00am-5:30pm and Sat. 8:00am-3:30pm Arizona Time. www.sdhqoffroad.com



SDHQ Motorsports
 190 S McQueen Rd
 Ste 109 Gilbert, AZ 85233
 Phone: 480-633-2929

INSTALLATION INSTRUCTIONS

Product: SDHQ-56-1131-150

Description: 2014+ Lexus GX460 Switch Pros 9100 Overhead Keypad Mount

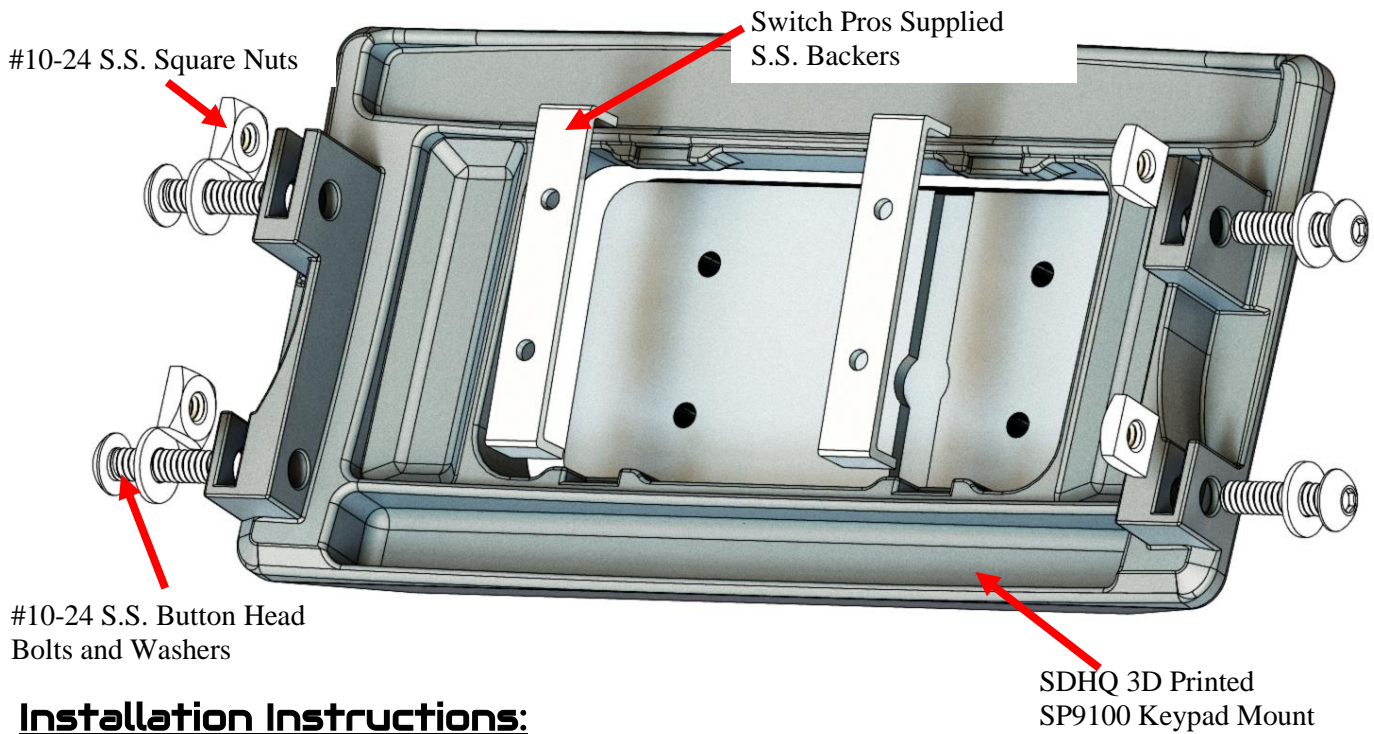


| <u>Parts List</u> | <u>Hardware List</u> | <u>Required Tools</u> |
|---|---|--|
| (1) SDHQ GX460 Switch Pros 9100 OH Keypad Mount SDHQ-56-1131-150 | (4) #10- 24 x 3/4" S.S. Button Head Bolts | Plastic Panel Remover |
| (1) Hardware Package SDHQ-56-1131-150-HP | (4) #10-24 S.S. Square Nuts (4) #10 S.S. Washers | 5/64" Hex Drive Small Phillips Screwdriver Pick Stepper Drill Bit Thread Locker (Medium) |

Tech Notes

Approx install time = 1hr (not including wiring)

For questions or help with the installation, please call SDHQ Offroad @ 480-633-2929
 Mon.–Fri. 8:00am–5:30pm and Sat. 8:00am–3:30pm Arizona Time. www.sdhqoffroad.com

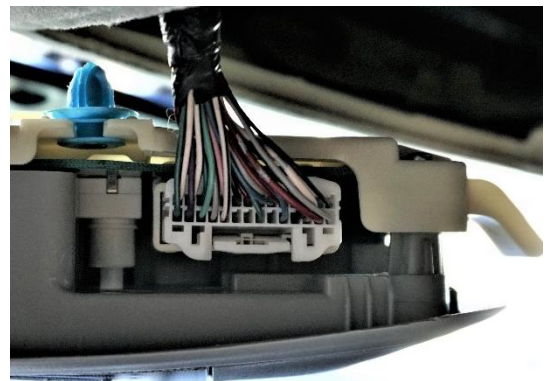


Installation Instructions:

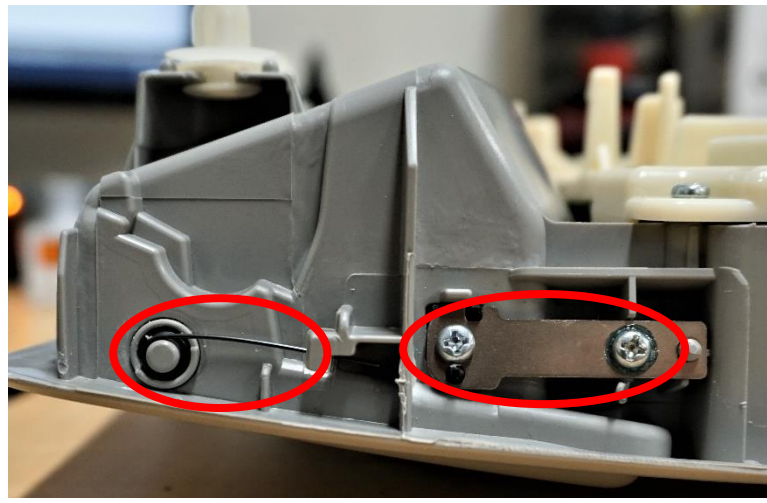
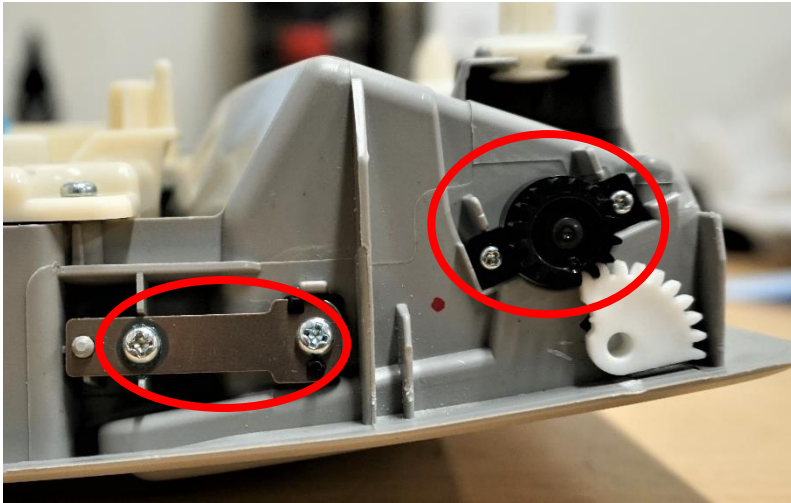
1. Unbox your SDHQ GX460 Switch Pros 9100 Overhead Keypad Mount and hardware.
2. **Remove the factory overhead panel.** Using a plastic panel removal tool, remove the entire overhead assembly. Pry along the rear edges of the panel, being careful not to scratch the plastic. Unhook the front of the panel from the roof and disconnect the harness.



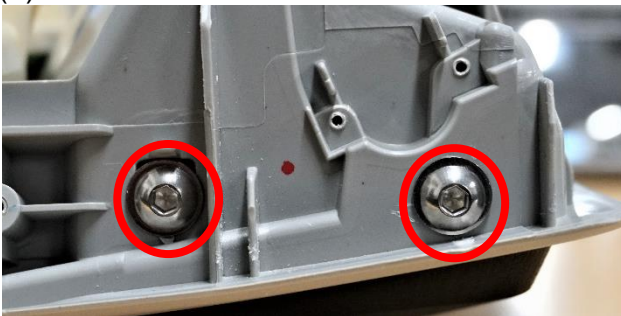
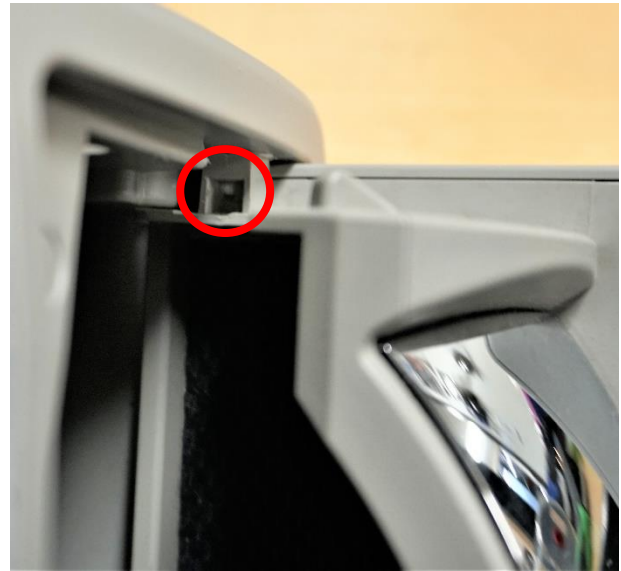
3. **Prepping 3D Printed panel.** Place the 9100 Keypad into the SDHQ 3D Printed Panel. Secure the Keypad with the Switch Pros supplied hardware by placing the (2) mounting brackets into the back side of the panel as shown above. Thread in the studs to the keypad and tighten down with nylock nuts.



- Place the (4) #10-24 square nuts in the slots as shown on Page 4, make sure the holes line up with the threads of the nuts.
- Prepping overhead panel.** Take the panel you removed from the vehicle and use your Phillips Head screwdriver to remove the (2) stops and black gear. Use a pick to unhook and remove the spring. See pictures below.



- Open the sunglasses holder and use your pick to depress the small white tab holding the gear in place. Remove the gear once free, then remove and discard the sunglasses holder. Use your Stepper Drill Bit to drill a $\frac{3}{4}$ " hole on the inside of the opening.
- Place the assembled keypad mount into the panel, feed the wire harness through the hole and install the (4) #10-24 button head bolts with washers.



- Pause install now and wire your Switch Pros.
- Once finished and wiring has been ran, install the panel in the reverse order as removed. Enjoy your new SDHQ Built Switch Pros 9100 Overhead Console Mount!



*****Double check all hardware is installed correctly and tight*****

*****Re-torque ALL bolts after 100 miles*****



190 S McQueen Rd
Ste 109 Gilbert, AZ 85233
Phone: 480-633-2929 | Fax: 480-633-1791
www.sdhqoffroad.com

Follow us on:



Facebook



Instagram

For questions or help with the installation, please call SDHQ Offroad @ 480-633-2929
Mon.–Fri. 8:00am–5:30pm and Sat. 8:00am–3:30pm Arizona Time. www.sdhqoffroad.com