



SDHQ Motorsports
190 S McQueen Rd
Ste 109 Gilbert, AZ 85233
www.SDHQoffroad.com

Product Packing List

Product: ***SDHQ-55-3001-G3***

Description: '16-'23 Tacoma Dual Battery Kit

Batteries NOT included

_____ (1) Main Battery Mount	SDHQ-55-3001-G3-A
_____ (1) Rear Upright Support	SDHQ-55-3001-G3-B
_____ (1) Vertical Support	SDHQ-55-3001-G3-C
_____ (1) SDHQ Auxiliary Billet Battery Hold Down	SDHQ-50-3005-U1-A
_____ (1) Hardware Package	SDHQ-55-3001-G3-D
_____ (3) M8 - 1.25 S.S. Nylock Nuts	
_____ (3) 5/16" S.S. Washers	
_____ (5) M6 - 1.0 x 20mm S.S. Button Head Flange Bolts	
_____ (3) M6 - 1.0 S.S. Nylock Nut	
_____ (3) 1/4" S.S. Washers	
_____ (2) 3/8" - 16 x 9" Threaded Rods	
_____ (6) 3/8" - 16 S.S. Serrated Flange Nuts	
_____ (2) 3/8" S.S. with Rubber Washer	
_____ (1) Small Tube of Blue Loctite	

Inspected and Packaged By: _____ Date: _____

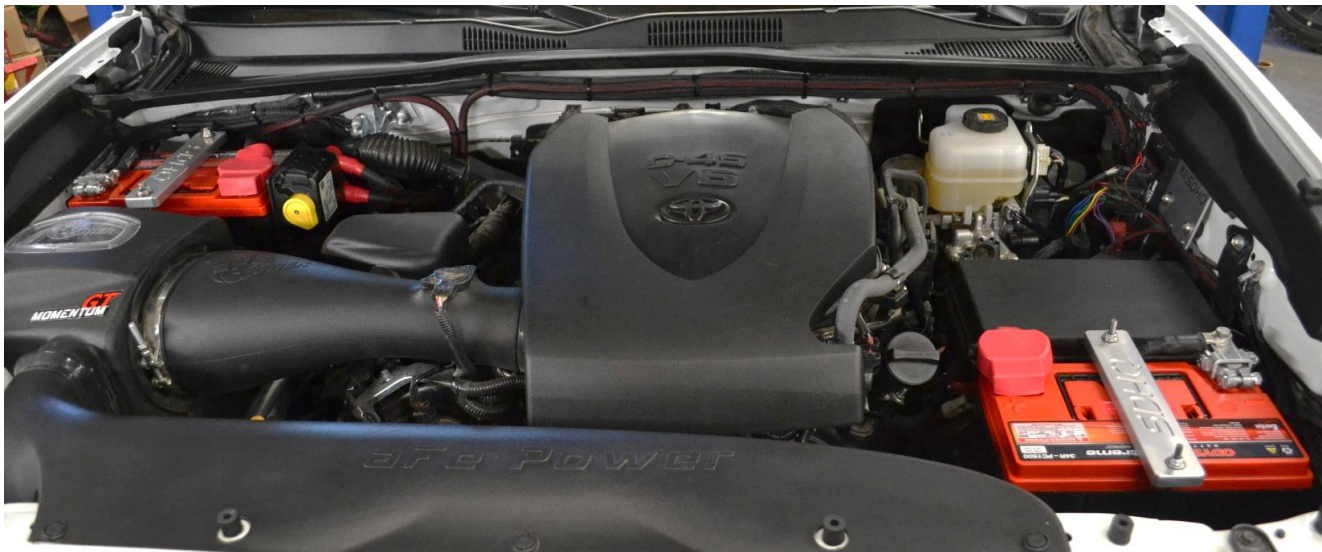


SDHQ Motorsports
 190 S McQueen Rd
 Ste 109 Gilbert, AZ 85233
www.SDHQoffroad.com

INSTALLATION INSTRUCTIONS

Product: *SDHQ-55-3001-G3*

Description: '16-'23 Tacoma Dual Battery Kit



Parts List	Hardware List	Required Tools
(1) Main Battery Mount SDHQ-55-3001-G3-A (1) Rear Upright Support SDHQ-55-3001-G3-B (1) Vertical Support SDHQ-55-3001-G3-C (1) SDHQ Auxiliary Battery Hold Down SDHQ-50-3005-U1-A (1) Hardware Package SDHQ-55-3001-G3-D	(3) M8 – 1.25 S.S. Nylock Nuts (3) 5/16” S.S. Washers (5) M6 – 1.0 x 20mm S.S. Button Head Flange Bolts (3) M6 – 1.0 S.S. Nylock Nuts (3) 1/4” S.S. Washers (2) 3/8” – 16 x 9” Threaded Rods (6) 3/8” – 16 S.S. Serrated Flange Nuts (2) 3/8” S.S. with Rubber Washer (1) Small Tube of Blue Loctite	3/8” Drive Ratchet 3” and 6” Extensions 10mm, 13mm, 7/16”, 9/16” Sockets 10mm, 13mm Wobble Sockets 4mm , 1/8” Allen Wrenches 9/16” Wrenches

Tech Notes

Fits 2016+ Toyota Tacoma with ATRAC.

Use Anti-Seize/Loctite on all Stainless Steel (S.S.) hardware.

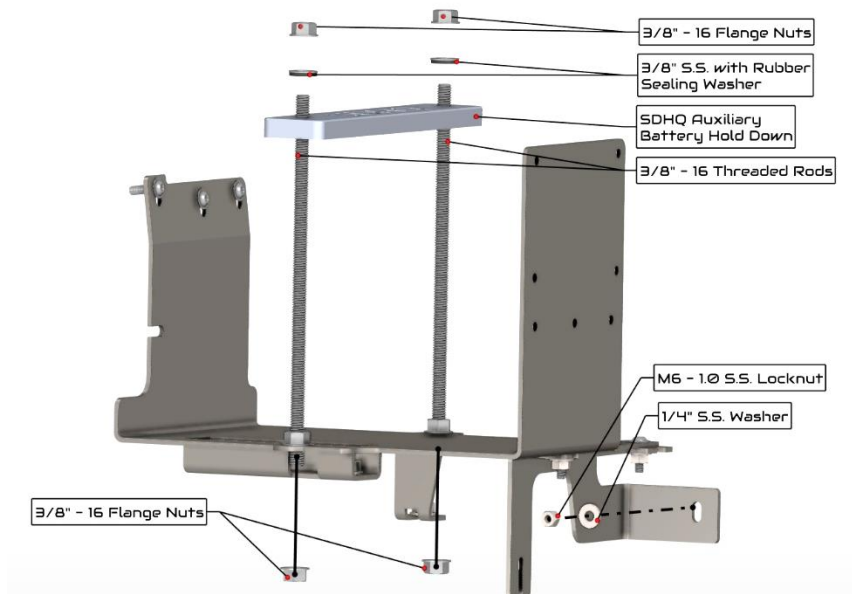
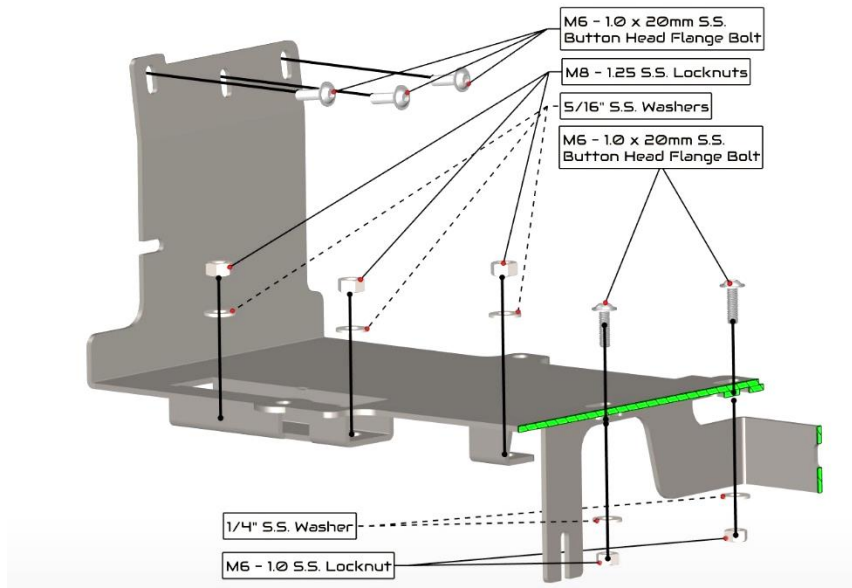
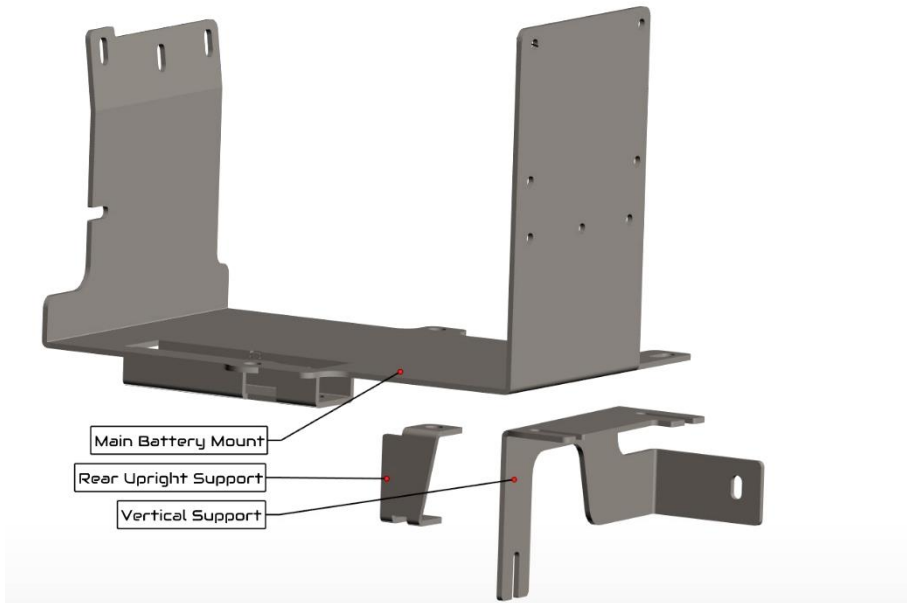
For ease of wiring, **SDHQ-50-3002-U1-CK** is our optional wiring kit. Must be purchased separately or in the Tacoma Complete Dual Battery Kit (**SDHQ-55-3000-G3**).

If you are running **24F** batteries, purchase (1) **SDHQ-50-3005-24F** Toyota Dual Battery 24F/27F Upgrade.

**** Connect all accessories to the main battery ****

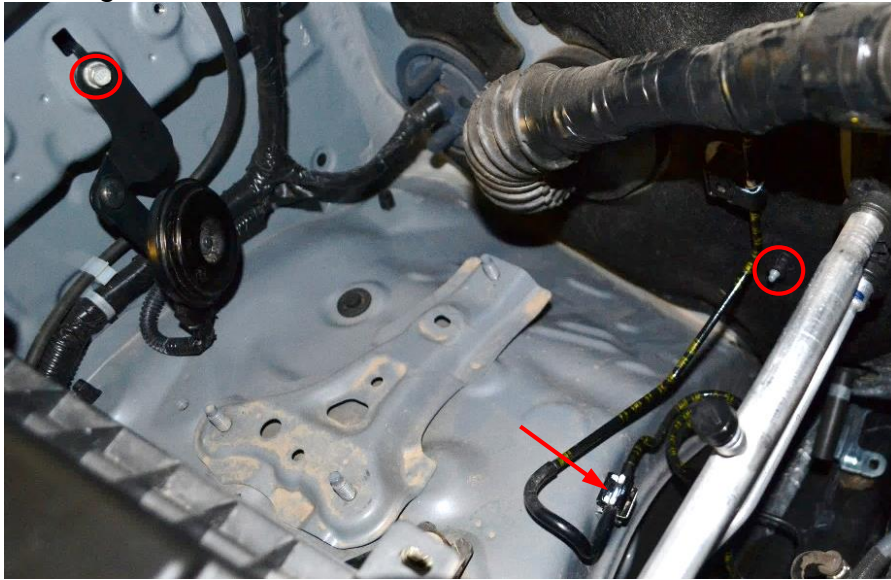
Approx. Install Time: 2 Hours Tray Kit, 6+ Hours Complete Kit

For questions or help with the installation, please email help@sdhqoffroad.com
 Store front hours: Mon. – Fri. 8:00am – 5:30pm and Sat. 9:00am – 2:00pm Arizona Time.



Installation Instructions:

1. Unbox your SDHQ Dual Battery Kit, check over all the parts. Familiarize yourself with the parts and the diagrams above.
2. **Preparing your Truck.** On the Passenger Side inner fender in the engine bay, remove the security horn using a 10mm socket and ratchet circled in RED. Remove the bracket on the back of the security horn but keep the nut loosely connected. Keep the security horn plugged in but out of the way while installing the mounts. Use a 10mm socket to loosen the brake clamp on the inner wheel well as arrowed in RED below. On the firewall, remove the plastic retaining nut holding the insulation onto the firewall circled in RED.



3. **Installing the Dual Battery Kit.** Slide the Vertical Support in between the loosened brake clamp and align the rear of the bracket onto the stud protruding from the firewall. Loosely tighten (1) M6 S.S. Nylock nut and (1) 1/4" S.S. Washer onto the stud protruding from the firewall. Loosely tighten the factory brake line bolt.

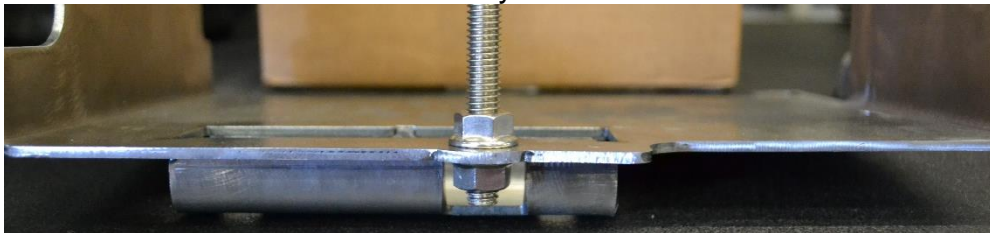


For questions or help with the installation, please email help@sdhqoffroad.com
Store front hours: Mon. – Fri. 8:00am – 5:30pm and Sat. 9:00am – 2:00pm Arizona Time.

4. Align the Rear Upright Support over the rear stud on the wheel well as pictured. Secure the Rear Upright Support using (1) M8 S.S. Nylock nut and (1) 5/16" S.S. Washer. Use a short 13mm socket and 6" extension to tighten this nut. Tighten this nut almost all the way as it is difficult to reach.



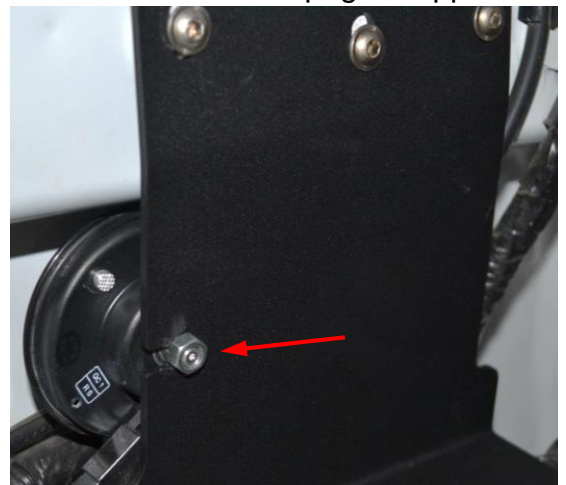
5. Thread (1) 3/8" Flange Nut onto one end of each Threaded Rod. Insert one threaded rod into the front hole of the Main Battery Mount and secure it using (1) more 3/8" Flange Nut. Make sure there is enough Threaded Rod available such that the battery can still be secured into the Main Battery Mount.



6. Align the Main Battery Mount in the engine bay of your truck. The bottom (2) holes will fit over the studs protruding from the top of the wheel well. The rear hole will align with the Rear Upright Support. With the holes aligned, tighten the Nylock nut on the Rear Upright Support.

7. Align the second 3/8" – 16 Threaded Rod through the rear hole on the Main Battery Mount and Rear Upright Support. Use (1) 3/8" – 16 Flange Nut to secure the Threaded Rod.

8. Use (3) M6 – 1.0 x 20mm S.S. Button Head Flange Bolts to secure the top slots on the passenger side of the Main Battery Mount to the inner fender. Leave these a little loose for adjustments.

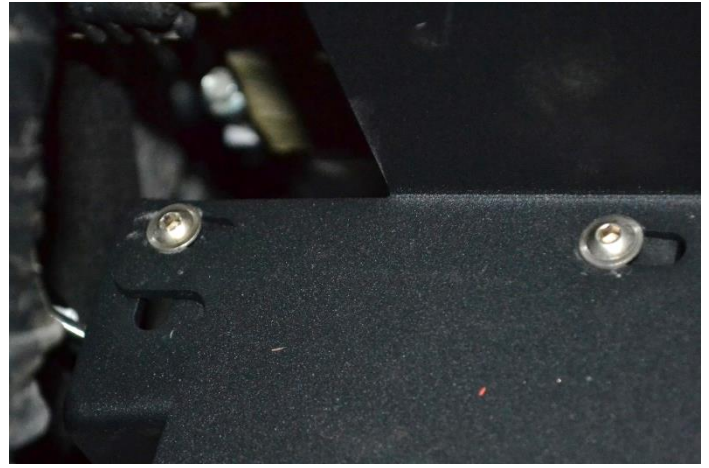


9. Place the security horn in the slot, arrowed in RED, on the Main Battery Mount with the horn on the outside of the mount. Tighten the nut to secure it to the mount.

10. Thread (2) M8 – 1.25 S.S. Nylock nuts and (2) 5/16" S.S. Washers to the front mounting points on the Main Battery Mount. Leave these nuts a little loose for adjustments.



11. Using (2) M6 S.S. Button Head Flange Bolts, (2) 1/4" S.S. Washers and (2) M6 S.S. Nylock Nuts, align and tighten the Vertical Support to the Main Battery Mount. Leave the hardware loose enough for now such that adjustments can be made.



12. Once all of the hardware has been installed loosely, finish tightening the hardware starting with the M6 S.S. Button Head Flange Bolts on the passenger side fender. From there, tighten the M6 Nylock Nut on the firewall, the brake line clamp bolt, the (3) M8 Nylock Nuts and the (2) M6 S.S. Button Head Flange Bolts. Be sure the Flange Nuts on the Threaded Rods are secure as well.

13. **Installing the Battery.** Place your battery into the Main Battery Mount. Align the battery such that it fits between the Threaded Rods. Place the SDHQ Auxiliary Battery Hold Down on top of the battery. Place (1) 3/8" S.S. with Rubber Sealing Washer over each 3/8" threaded rods. Thread and tighten (2) 3/8" – 16 Flange Nuts as pictured below.



14. With the battery in place, the install of the SDHQ Dual Battery Kit is complete. Now, the battery will need to be wired. If the SDHQ Dual Battery Wiring Kit (SDHQ-50-3002-U1) was purchased, begin those Install Instructions.

Double check all hardware is installed correctly and tight

Re-torque ALL bolts after 100 miles



190 S McQueen Rd
Ste 109 Gilbert, AZ 85233
www.sdhqoffroad.com

Follow us on:



Facebook



Instagram

For questions or help with the installation, please email help@sdhqoffroad.com
Store front hours: Mon. – Fri. 8:00am – 5:30pm and Sat. 9:00am – 2:00pm Arizona Time.