



SDHQ Motorsports
190 S McQueen Rd
Ste 109 Gilbert, AZ 85233
Phone: 480-633-2929

Product Packing List

Product: SDHQ-55-1650-G3

Description: 2016+ Toyota Tacoma Hidden Winch Mount

_____ (1) Winch Mount	SDHQ-55-1650-G3-A
_____ (2) Lower Support Brackets	SDHQ-55-1650-G3-B
_____ (1) Lower Bumper Bracket	SDHQ-55-1650-G3-C
_____ (1) Hawse and Roller Fairlead Cut Template	SDHQ-55-1650-G3-D
_____ (1) Hardware Package	SDHQ-55-1650-G3-E
_____ (4) 7/16" - 14 x 1 1/4" Grade 8 Bolts	
_____ (4) 7/16" - 14 Grade 8 Lock Nuts	
_____ (8) 7/16" Grade 8 Flat Washers	
_____ (2) 3/8" - 16 x 1" Grade 8 Bolts	
_____ (2) 3/8" - 16 Grade 8 Lock Nuts	
_____ (4) 3/8" Grade 8 Flat Washers	
_____ (4) M12 - 1.25 x 30 Bolts	
_____ (4) M12 - 1.25 Lock Nuts	
_____ (8) M12 Flat Washers	

Inspected and Packaged By: _____ Date: _____

For questions or help with the installation, please call SDHQ Offroad @ 480-633-2929
Mon.-Fri. 8:00am-5:30pm and Sat. 8:00am-3:30pm Arizona Time. www.sdhqoffroad.com

**For questions or help with the installation, please call SDHQ Offroad @ 480-633-2929
Mon.–Fri. 8:00am–5:30pm and Sat. 8:00am–3:30pm Arizona Time. www.sdhqoffroad.com**



SDHQ Motorsports
 190 S McQueen Rd
 Ste 109 Gilbert, AZ 85233
 Phone: 480-633-2929

INSTALLATION INSTRUCTIONS

Product: SDHQ-55-1650-G3

Description: 2016+ Toyota Tacoma Hidden Winch Mount



Parts List	Hardware List	Required Tools
(1) Winch Mount SDHQ-55-1650-G3-A (2) Lower Support Brackets SDHQ-55-1650-G3-B (1) Lower Bumper Bracket SDHQ-55-1650-G3-C (1) Hawse and Roller Fairlead Template SDHQ-55-1650-G3-D (1) Hardware Package SDHQ-55-1650-G3-E	(4) 7/16" - 14 x 1 1/4" Grade 8 Bolts (4) 7/16" - 14 Grade 8 Lock Nuts (8) 7/16" Grade 8 Flat Washers (2) 3/8" - 16 x 1" Grade 8 Bolts (2) 3/8" - 16 Grade 8 Lock Nuts (4) 3/8" Grade 8 Flat Washers (4) M12 - 1.25 x 30mm Bolts (4) M12 - 1.25 Locknuts (8) M12 Flat Washers	7/16", 9/16", 5/8", 11/16" Socket/Wrench 10mm, 12mm, 13mm, 14mm, 17mm, 19mm Socket/Wrench Panel Tool Drill 9/16" Drill bit Sufficient tools for cutting bumper plastic and sheet metal; body saw, hole saw, files, ect.

Tech Notes

Some cutting of the factory bumper is required.
 This mount is precisely designed to fit the Warn Zeon Platinum with wireless control. Others may fit but have not been tested.
 Includes template for Hawse/Roller Fairlead cut out.

Replaces factory aluminum bumper mount.

If using a Warn Zeon, the "Zeon Mounting Kit" is required, Part# 55-1660-G3

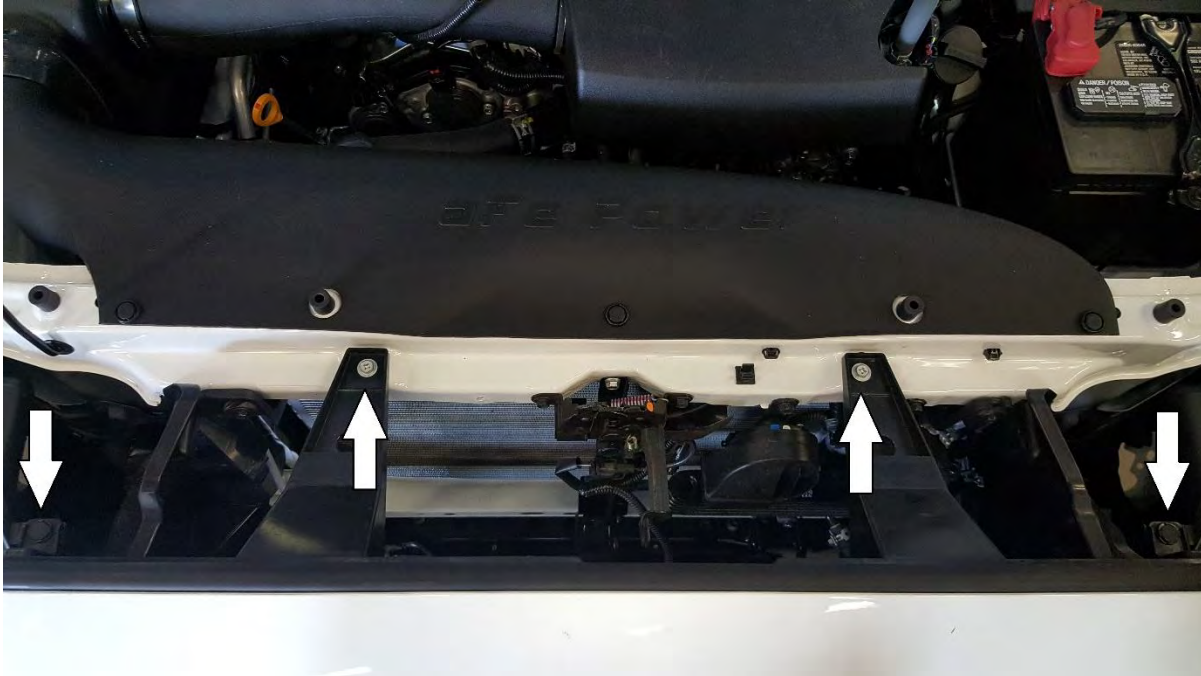
****Approx install time = 6-8hrs****

For questions or help with the installation, please call SDHQ Offroad @ 480-633-2929
 Mon.-Fri. 8:00am-5:30pm and Sat. 8:00am-3:30pm Arizona Time. www.sdhqoffroad.com

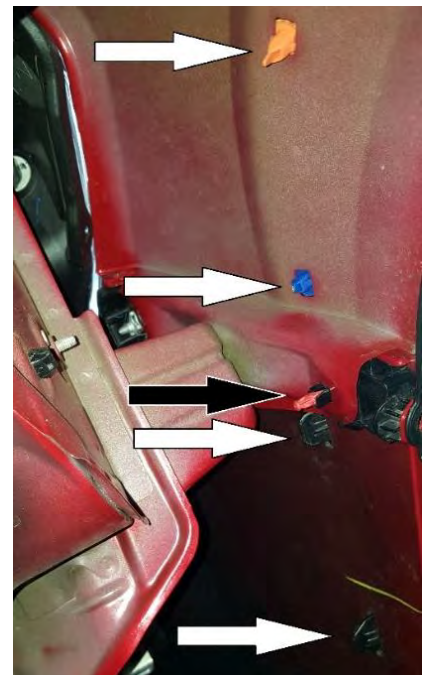
*****READ ALL INSTRUCTIONS THOROUGHLY FROM START TO FINISH BEFORE BEGINNING INSTALLATION! *****

Installation Instructions:

1. Remove the factory grill by removing the 2 screws and 2 clips on top. Once these are removed, gently pull the grille forward from the bottom where it is clipped in.

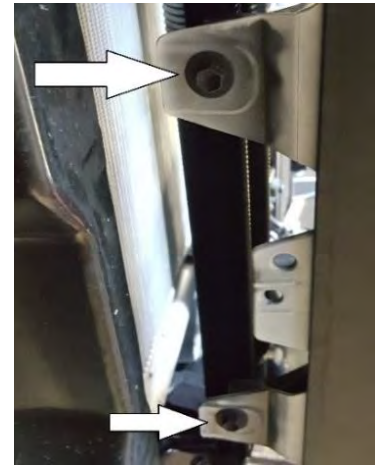
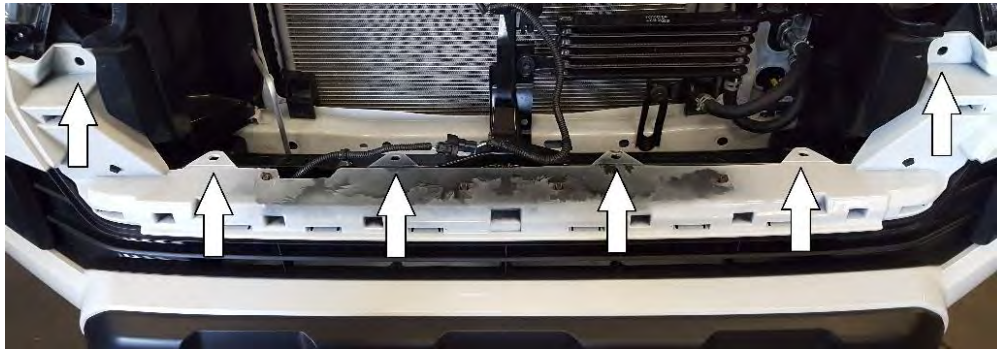


2. Removing the factory front bumper. Partially remove the front part of the inner fender well so you can get to the clips holding the outside of the bumper on. This is held in place by (2) 10mm screws on the bottom, and 2 clips and (1) 10mm screw on the inside. Once the inner fender is pulled back, you can get to the 4 clips that hold the end of the fender flair, and the 1 clip holding the bumper skin that needs to be released that is in the middle of the other 4 clips.



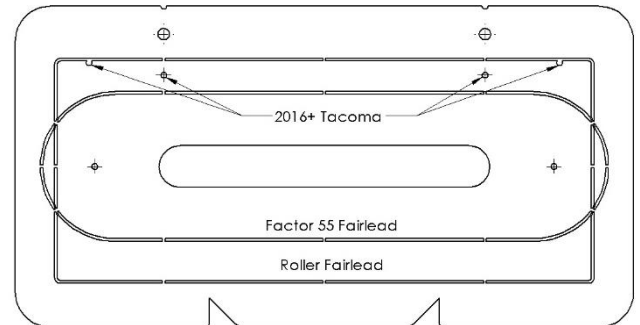
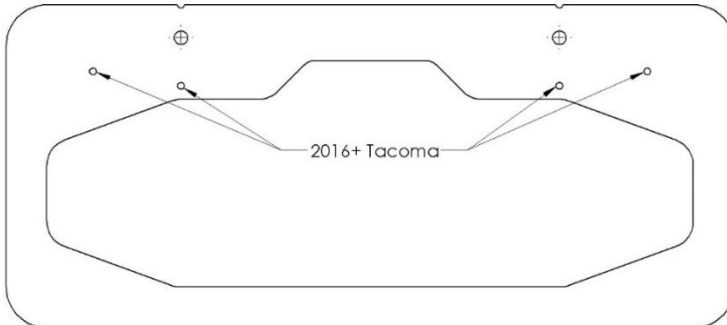
For questions or help with the installation, please call SDHQ Offroad @ 480-633-2929
Mon.–Fri. 8:00am–5:30pm and Sat. 8:00am–3:30pm Arizona Time. www.sdhqoffroad.com

3. Remove the bumper skin from bumper mount by removing the 6 remaining clips located under the grille, and the 2 10mm screws on the bottom. Unplug the fog light harness and unclip it from the sheet metal.



4. Next, remove the 6 14mm nuts holding the factory aluminum bumper support on.

5. **Cutting the factory front bumper for the Hawse.** *Note: Cutting templates are only designed for the Warn Hawse, Factor 55 Fairlead and Roller Fairleads. If using any other hawse, it is recommended to transfer the bolt hole locations and trace your hawse onto the plastic bumper. Remove the outer black plastic from the factory bumper skin by unclipping it from the back (this makes it easier to work on and will remain off until the bumper skin is ready to put back on the truck). Using the provided template to cut for the Hawse fairlead opening, line up the two holes at the top of the template to match the factory license plate holes and tape your template. A body saw is recommended for cutting the bumper plastic. Cut out using the template as a guide. Clean all edges so they are burr free.



6. Trim the factory sheet metal as shown to clear the top of the winch.



7. The factory power steering cooler may have to be slightly moved back to clear the new winch. Carefully bend the mounting brackets near the frame side of the bracket so the cooler moves back towards the radiator, but does not contact.

8. (If using a Warn Zeon Winch, refer to the Zeon Mounting Kit Instructions before proceeding) Install the winch mount on the frame using the factory bumper studs and nuts. Adjust so the mount is as centered to the slotted holes as possible. Check around the winch mount and make sure the factory power steering cooler, AC lines (shown right) or anything else is not contacting the winch mount. Carefully bend any brackets necessary to clear the winch mount.



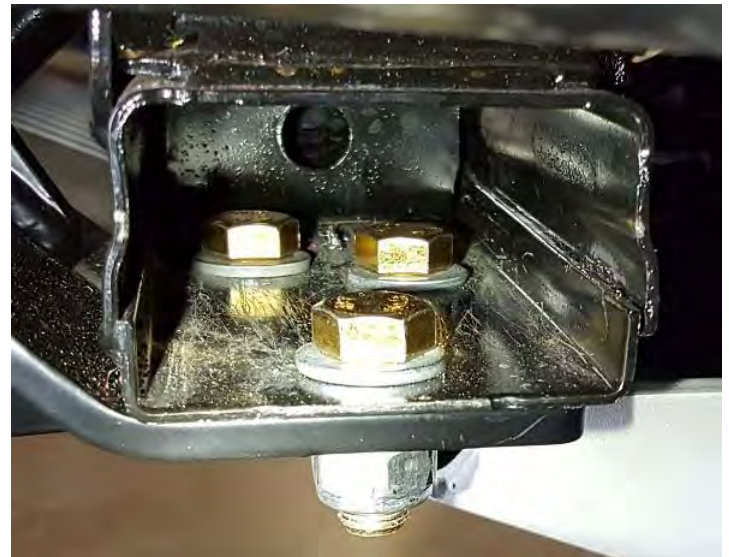
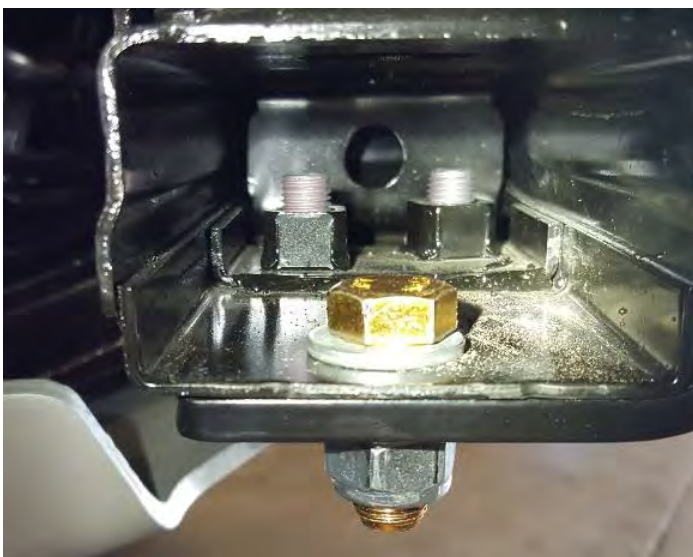
9. Temporarily install the driver's side lower support bracket to the winch mount. Use the slotted holes in the bracket to make your center marks in order to drill. Remove the factory box insert and discard. Drill the (2) 9/16" holes and deburr.



10. You can now install both of your Lower Support Brackets using the provided 7/16" hardware for the top, and the M12 bolts, washers, and nuts for the bottom. The passenger side will re-use 2 of the factory bolts and 1 of the new provided bolts. The driver's side will use all new provided hardware.

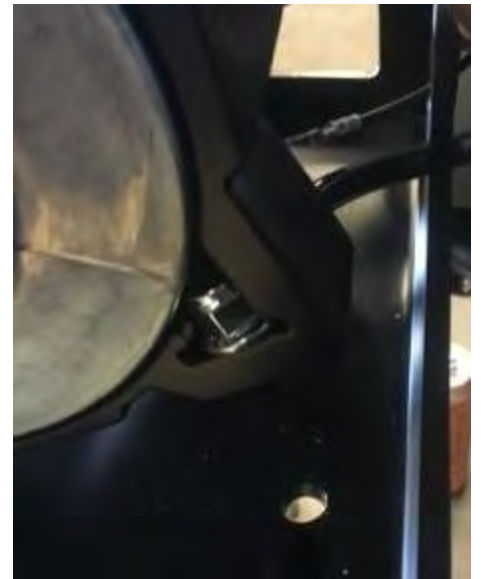
Passenger side:

Driver's side:

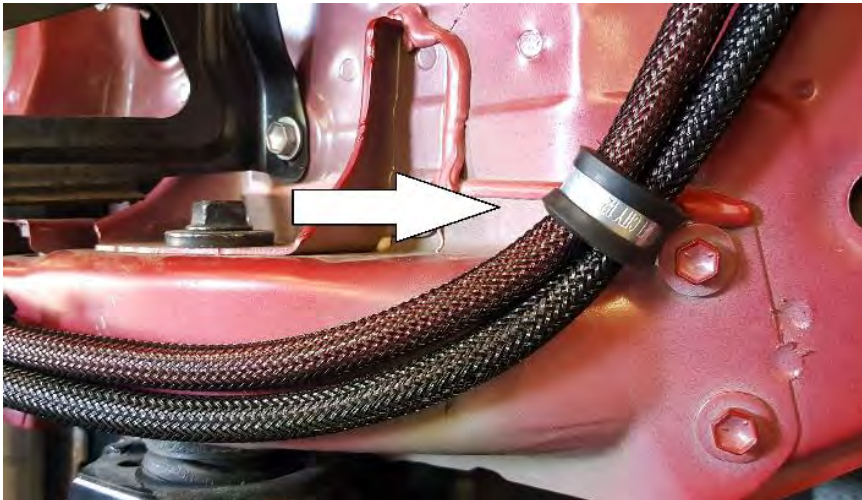


For questions or help with the installation, please call SDHQ Offroad @ 480-633-2929
Mon.-Fri. 8:00am-5:30pm and Sat. 8:00am-3:30pm Arizona Time. www.sdhqoffroad.com

12. Install your winch to the Winch Mount. Make sure to connect the motor ground and control box ground to the winch before bolting the winch down because it is difficult to reach once bolted down. Use the rear 2 winch bolts to install the Lower Bumper Bracket.



13. If you are using a Warn Zeon, refer to the Zeon controller relocation and wiring kit instructions. If you are not, proceed to the next step. Use the provided clamps and zip ties to wire your winch according to the manufactures recommendations. Use the factory 10mm bolt to mount the Del clamp and wiring as shown. Use the edge clip zip ties to prevent the wires from chaffing as shown.



14. Install the winch line to the winch drum per the manufacturer's instructions. Make sure to run the line through the Hawse, black factory plastic that was cut out for the Hawse, and the factory bumper skin. Loosely bolt the Hawse onto the Winch Mount.



15. Trim the lower part of the plastic side radiator shrouds as shown and reinstall.



15. Make sure all of the hardware is tight, except for the Hawse. Remove the (2) plastic screw clips from the factory aluminum bumper mount and reinstall them on the factory inner fenders. Reinstall the factory bumper skin only, without the black plastic. Use the provided 1/4" bolts, washers, and lock nuts to mount the bottom of the bumper to the Lower Bumper Bracket.



16. Loosely place the black factory outer plastic, with the Hawse cut out, onto the factory bumper skin. Adjust the Hawse so that it is lined up with your cut out. Pull the black plastic back off so you can tighten the Hawse. While the black plastic is still off, install the (2) ¼” bolts and washers through the front of the Control Box Relocation Bracket to the Control Box Mounting Bracket. Now the front black plastic can be reinstalled with the factory clips.



17. Plug your fog lights in. Reinstall the grille by clipping the bottom back in and reinstalling the upper 2 screws and 2 clips.

18. You can now power up your winch and spool your rope per the manufacturer’s recommendations.



*****Double check all hardware is installed correctly and tight*****

*****Re-torque ALL bolts after 100 miles*****



190 S McQueen Rd
Ste 109 Gilbert, AZ 85233
Phone: 480-633-2929 | Fax: 480-633-1791
www.sdhqoffroad.com

Follow us on:



Facebook



Instagram

For questions or help with the installation, please call SDHQ Offroad @ 480-633-2929
Mon.–Fri. 8:00am–5:30pm and Sat. 8:00am–3:30pm Arizona Time. www.sdhqoffroad.com