



SDHQ Motorsports
190 S McQueen Rd
Ste 109 Gilbert, AZ 85233
www.SDHQoffroad.com

Product Packing List

Product: *SDHQ-55-1541-G3*

Description: '16-'23 Tacoma Long Bed Rock Sliders

- | | |
|--|-------------------|
| _____ (1) Driver Side Slider | SDHQ-55-1541-G3-A |
| _____ (1) Passenger Side Slider | SDHQ-55-1541-G3-B |
| _____ (2) Front Inner Double Brackets | SDHQ-55-1540-G3-C |
| _____ (1) Gas Tank Upper Bracket | SDHQ-55-1540-G3-D |
| _____ (7) Upper Brackets | SDHQ-50-1540-P1 |
| _____ (6) Lower Brackets | SDHQ-50-1540-P3 |
| _____ (2) Front Inner Single Brackets | SDHQ-50-1540-P4 |
| _____ (1) Hardware Package | SDHQ-55-1541-G3-C |
| _____ (12) 3/8" - 16 x 1 1/4" Grade 8 Bolts | |
| _____ (12) 3/8" Grade 8 Flat Washers | |
| _____ (12) 3/8" Grade 8 Lock Washers | |
| _____ (16) 7/16" - 14 x 1 1/4" Grade 8 Bolts | |
| _____ (18) 7/16" Grade 8 Flat Washers | |
| _____ (14) 7/16" Grade 8 Lock Washers | |
| _____ (2) 7/16" - 14 Locknuts | |
| _____ (2) M10 - 1.25 x 25mm Grade 8 Flange Hex Head Bolt | |
| _____ (1) Loctite Packet | |

Inspected and Packaged By: _____ **Date:** _____

For questions or help with the installation, please email help@sdhqoffroad.com
Store front hours: Mon. - Fri. 8:00am - 5:30pm and Sat. 9:00am - 2:00pm Arizona Time.

For questions or help with the installation, please email help@sdhgoffroad.com
Store front hours: Mon. – Fri. 8:00am – 5:30pm and Sat. 9:00am – 2:00pm Arizona Time.



SDHQ Motorsports
 190 S McQueen Rd
 Ste 109 Gilbert, AZ 85233
 Phone: 480-633-2929

INSTALLATION INSTRUCTIONS

Product: SDHQ-55-1541-G3

Description: '16-'23 Tacoma Long Bed Rock Sliders



<u>Parts List</u>	<u>Hardware List</u>	<u>Required Tools</u>
(1) Driver Side Slider (1) Passenger Side Slider (2) Front Inner Double Bracket (1) Gas Tank Bracket (7) Upper Bracket (6) Lower Bracket (2) Front Inner Single Bracket (1) Hardware Package	(12) 3/8" - 16 x 1 1/4" Bolts (12) 3/8" Flat Washers (12) 3/8" Lock Washers (16) 7/16" - 14 x 1 1/4" Bolts (18) 7/16" Flat Washers (14) 7/16" Lock Washers (2) 7/16"-14 Locknuts (2) M10 - 1.25 x 25mm Flange Bolts (1) Loctite Packet	-1/2" socket/wrench -9/16" open/box combination wrench -5/8" socket/wrench -8mm socket/wrench -10mm wrench/socket -12mm socket/wrench -14mm socket/wrench

Tech Notes

The driver's side slider can be tricky to bolt up next to the gas tank. Follow instructions carefully in order to save time and frustration. It is recommended the install is performed by at least 2 qualified technicians. For strongest and best fit, use a jack under each mount when tightening. Use red Loctite on all hardware. Some trimming may be required.

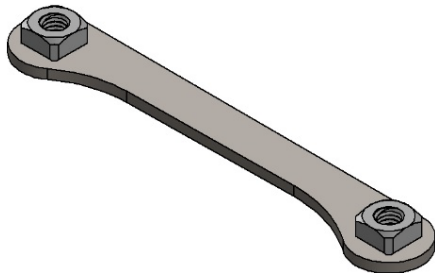
****For 2022-2023 models drilling is required for install****

****Approx install time = 2 hours****

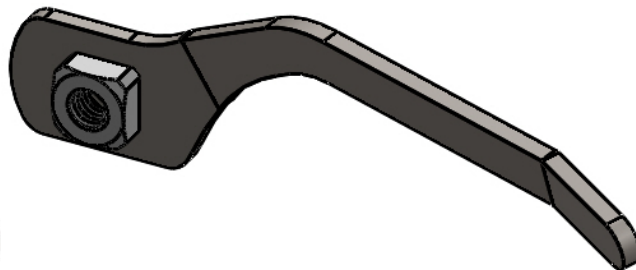
For questions or help with the installation, please email help@sdhgoffroad.com
 Store front hours: Mon. – Fri. 8:00am – 5:30pm and Sat. 9:00am – 2:00pm Arizona Time.



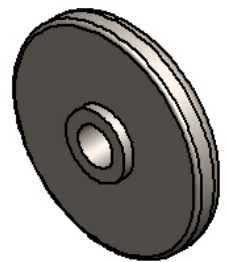
Front Inner Double Bracket
SDHQ-55-1540-G3-C



Gas Tank Upper Bracket
SDHQ-55-1540-G3-D



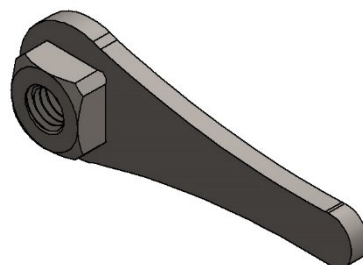
Upper Bracket
SDHQ-50-1540-P1



Lower Bracket
SDHQ-50-1540-P3



Front Inner Single Bracket
SDHQ-50-1540-P4



For questions or help with the installation, please email help@sdhgoffroad.com
Store front hours: Mon. – Fri. 8:00am – 5:30pm and Sat. 9:00am – 2:00pm Arizona Time.

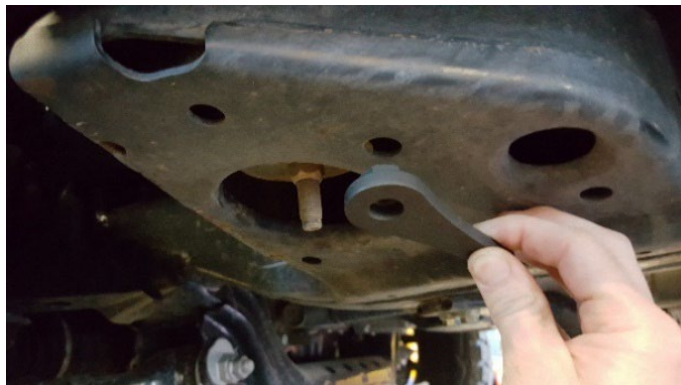
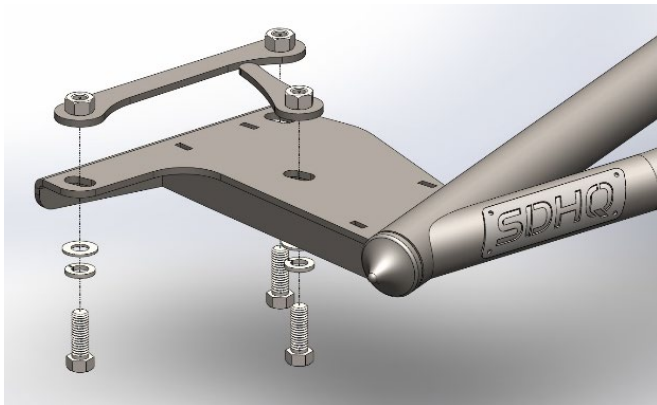
*****READ ALL INSTRUCTIONS THOROUGHLY FROM START TO FINISH BEFORE BEGINNING INSTALLATION! *****

Installation Instructions:

- 1. Preparing your Tacoma.** If your Tacoma is equipped with a gas tank skid plate, remove the (4) 12mm bolts holding it on and set aside. It is necessary to lower your gas tank 2 ½", enough to reach the rear inner brackets. Support your gas tank with a jack, remove the (2) 14mm tank strap bolts and lower your tank as much as possible without stretching or kinking any of the lines. If you have a 2WD truck, the cross member bolt will need to be removed. Only remove one cross member bolt at a time.

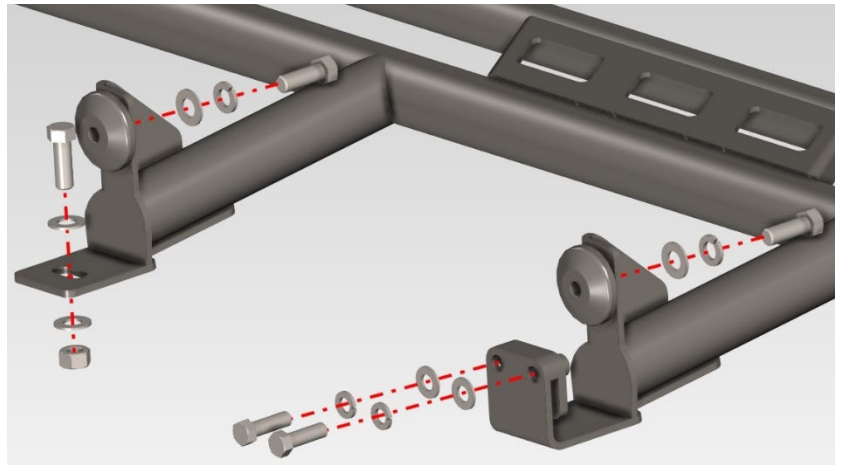


- 2. Starting with the driver's side, insert the Front Inner Double Bracket and the Front Inner Single Bracket into the front body mount.** The Front Inner Double Bracket locates on the lower 2 open holes with the nuts facing up, and the flat edge going away from the body mount. The Front Inner Single Bracket locates in the middle open hole with the nut facing up. Driver's side is shown below.



For questions or help with the installation, please email help@sdhgoffroad.com
Store front hours: Mon. – Fri. 8:00am – 5:30pm and Sat. 9:00am – 2:00pm Arizona Time.

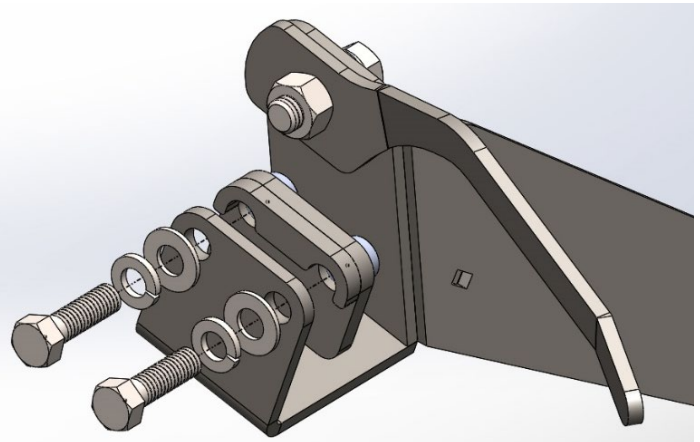
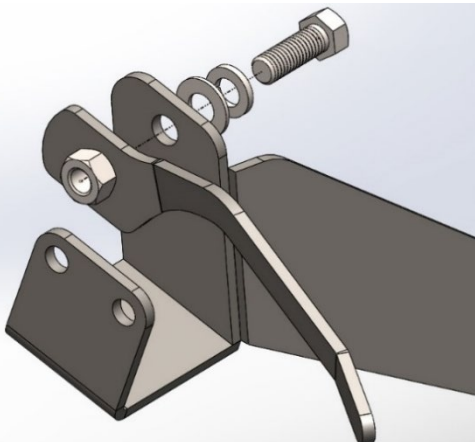
- 3. Installing the Sliders.** Lift the Driver side Slider into position and install (3) Upper Brackets with 7/16" bolts, washers and lock washers. This will hold the sliders up while you line up and install the rest of the hardware. Starting at the second mount from the front, install (1) Lower Bracket with 3/8" bolts and washers as pictured below. The third mount will utilize (1) 7/16" bolt, (2) 7/16" washers, and (1) 7/16" lock nut through the bottom of the mount and frame as pictured. The fourth mount will be similar to the second mount with the Lower Bracket and 3/8" hardware. Leave all hardware slightly loose. Use red Loctite on all hardware. For 2WD vehicles, you will need to use (1) M10 – 1.25 x 20mm bolt in place of the 7/16" bolt on the third mount. This will replace the cross member bolt.



- 4.** Thread (3) 7/16" bolts, washers and lock washers into the Front Inner Single Bracket and Front Inner Double Bracket. Leave these slightly loose for now and use red Loctite. For 22-23 models, not all of the holes will line up. Adjust for best fitment and drill remaining holes.

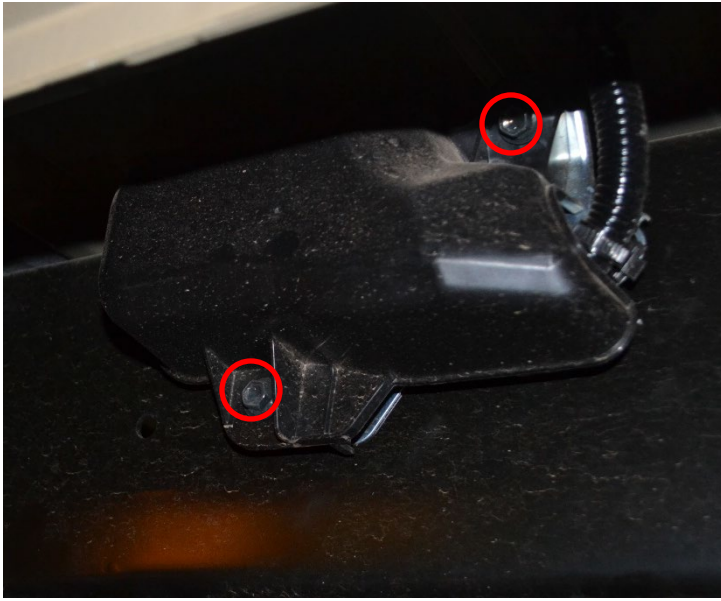


- 5.** While moving the tank as far out of the way as possible, insert the Upper Gas Tank Mount into the inside of the frame and thread the 7/16" bolt and washers in from the outside. The Upper Gas Tank Mount should fit behind the brake and gas lines, but it is a tight fit. Make sure your lines are not positioned in a way that they can chafe on any bracket. Now install the inner rear bracket with the (2) 3/8" bolts and washers. It may be helpful to lower the spare tire and insert the bracket from the back side.



For questions or help with the installation, please email help@sdhgoffroad.com
 Store front hours: Mon. – Fri. 8:00am – 5:30pm and Sat. 9:00am – 2:00pm Arizona Time.

6. Once all the hardware is started, you can tighten everything. It is recommended to use a jack under each mount when tightening. Tighten the outer 7/16" bolts first, then tighten the inner 3/8" bolts. Once the sliders are tight, reposition and reinstall your gas tank and skid plate.
7. For the passenger side, follow the same steps as the driver's side, except there is no gas tank in the way. An Upper Bracket will be used in place of the Gas Tank Mount. On the passenger side, there is a plastic cover to protect (2) wiring harnesses. Remove the plastic cover and unbolt the mount for the harnesses. The mount and plastic cover may need to be trimmed to fit on the truck again once the slider is installed.



8. Consistent with the driver's side, get all of the hardware in and started before tightening anything. Once everything is started and snug, tighten the 7/16" bolts first, then tighten all of the 3/8" bolts. Enjoy your new SDHQ Tacoma Sliders!



For questions or help with the installation, please email help@sdhgoffroad.com
Store front hours: Mon. – Fri. 8:00am – 5:30pm and Sat. 9:00am – 2:00pm Arizona Time.

*****Double check all hardware is installed correctly and tight*****

*****Re-torque ALL bolts after 100 miles*****



190 S McQueen Rd
Ste 109 Gilbert, AZ 85233
www.sdhqoffroad.com

Follow us on:



Facebook



Instagram

For questions or help with the installation, please email help@sdhqoffroad.com
Store front hours: Mon. – Fri. 8:00am – 5:30pm and Sat. 9:00am – 2:00pm Arizona Time.