



SDHQ Motorsports
190 S McQueen Rd
Ste 109 Gilbert, AZ 85233
www.SDHQoffroad.com

Product Packing List

Product: SDHQ-55-1143-G4

Description: 2024+ Toyota Tacoma Switch Pros Power Module/REDARC Solar Regulator Mount

- | | |
|-----------------------------------------------------|--------------------|
| _____ (1) Power Module/Solar Regulator Mount | SDHQ-55-1143-G4-A |
| _____ (1) Hardware Package | SDHQ-55-1143-G4-HP |
| _____ (4) #8 - 32 x 3/8" S.S. Button Head Bolts | |
| _____ (4) #8 - 32 S.S. Hex Nuts | |
| _____ (4) .304 x .169 x .032 Small Diameter Washers | |

Inspected and Packaged By: _____ Date: _____

For questions or help with the installation, please email help@sdhqoffroad.com
Store front hours: Mon. – Fri. 8:00am – 5:30pm and Sat. 9:00am – 2:00pm Arizona Time.

For questions or help with the installation, please email help@sdhqoffroad.com
Store front hours: Mon. – Fri. 8:00am – 5:30pm and Sat. 9:00am – 2:00pm Arizona Time.



SDHQ Motorsports
 190 S McQueen Rd
 Ste 109 Gilbert, AZ 85233
www.SDHQoffroad.com

INSTALLATION INSTRUCTIONS

Product: SDHQ-55-1143-G4

Description: 2024+ Toyota Tacoma Switch Pros Power Module/REDARC Solar Regulator Mount



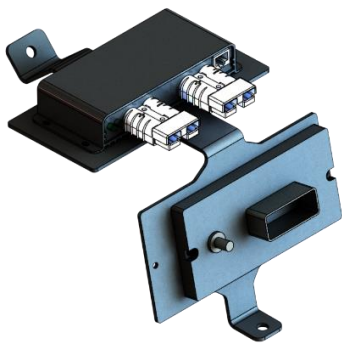
<u>Parts List</u>	<u>Hardware List</u>	<u>Required Tools</u>
(1) SDHQ Power Module/Regulator Mount SDHQ-55-1143-G4-A 1) Hardware Package SDHQ-55-1143-G4-HP	(4) #8 - 32 x 3/8" S.S. Button Head Bolts (4) #8 - 32 S.S. Hex Nuts (4) .304 x .169 x .032 Small Diameter Washers	12mm Socket Ratchet 3/32" Hex Bit/Allen Key

Tech Notes

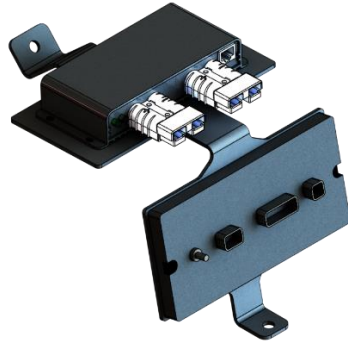
Fits Switch Pros 9100 and RCR12 Models. Uses Switch Pros provide hardware for mounting.
 Fits REDARC 10A, 20A and 30A solar regulators.
 Fits Garmin Power Switch with (2) mounting locations.
 Use anti-seize for all S.S. hardware.
 Approx. Install Time: 1 Hour

*****READ ALL INSTRUCTIONS THOROUGHLY FROM START TO FINISH BEFORE BEGINNING INSTALLATION!*****

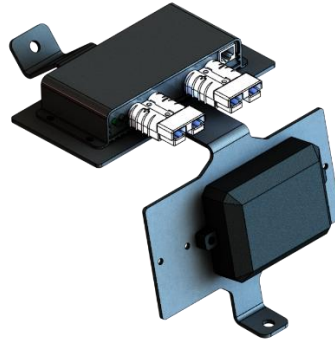
For questions or help with the installation, please email help@sdhqoffroad.com
 Store front hours: Mon. – Fri. 8:00am – 5:30pm and Sat. 9:00am – 2:00pm Arizona Time.



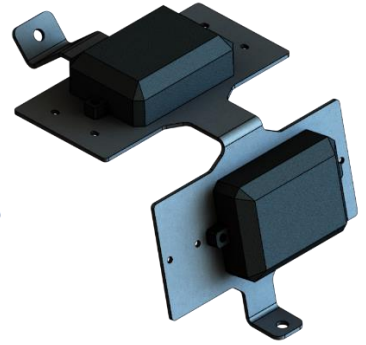
Switch Pros 9100



Switch Pros RCR 12



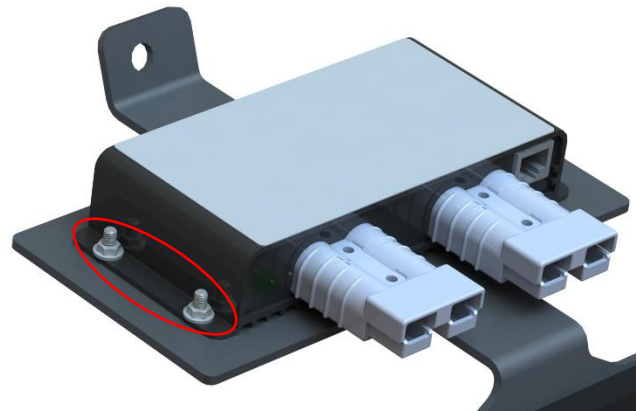
Garmin Power Switch



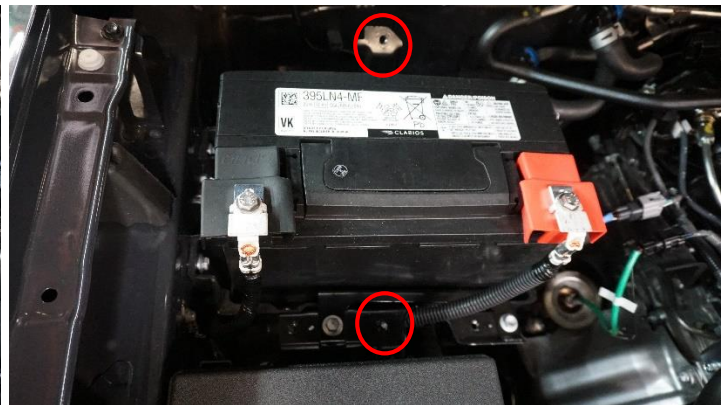
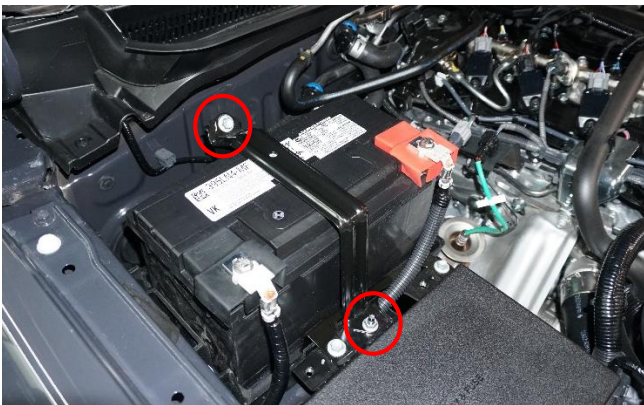
Dual Garmin Power Switch

Installation Instructions:

1. Place the Switch Pros or Garmin module onto the mount and secure using the hardware provided with the module. For REDARC Solar Recharger mounting use the supplied (4) #8 bolts, washers, and nuts. Install the nuts and washers on the top side of the mount as shown below.

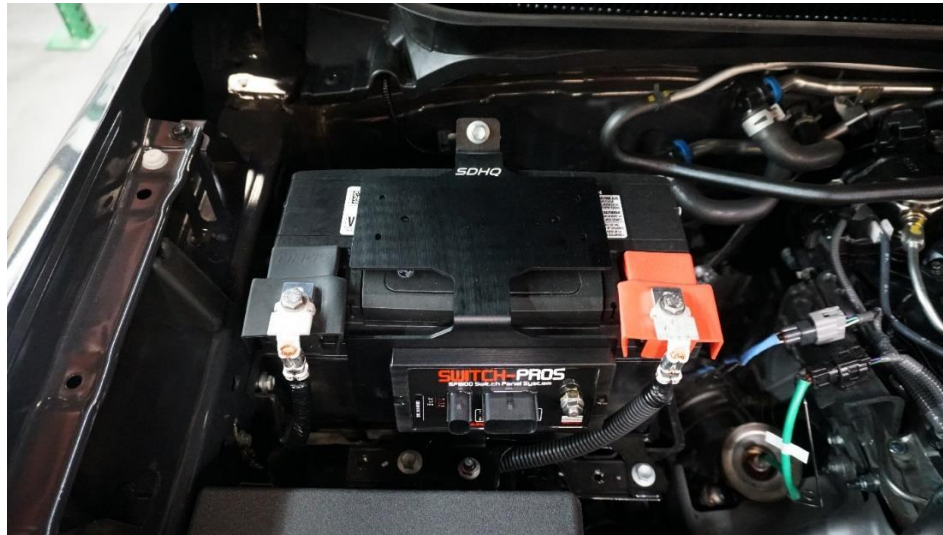


2. Unbolt the factory battery cross over by removing the top 12mm bolt and the bottom 12mm nut shown below.



For questions or help with the installation, please email help@sdhqoffroad.com
Store front hours: Mon. – Fri. 8:00am – 5:30pm and Sat. 9:00am – 2:00pm Arizona Time.

3. Set your SDHQ mount in place of the factory cross over and reinstall the 12mm nut and bolt removed in the previous step. Your Switch Pros Module/REDARC Regulator can now be wired.



Switch Pros Wiring:

Once the Switch-Pros power module is mounted, but BEFORE it is connected to anything else, do the following:

1. Reinstall battery (if battery was removed during installation), and secure factory connections. Start vehicle and confirm that battery is properly installed, connected and grounded.
2. Connect the Switch-Pros Ground wire lug to the negative terminal on the battery (grounding elsewhere will not properly filter noise and will void your product warranty).
3. Plug the 16-pin harness into the power module; be sure it locks in.
4. Connect the red Battery Cable to the positive terminal on the battery. Tighten down both ends, to prevent lug from rotating and possibly causing friction or spark, refer to the **Switch Pros** installation instructions for further wiring procedure.

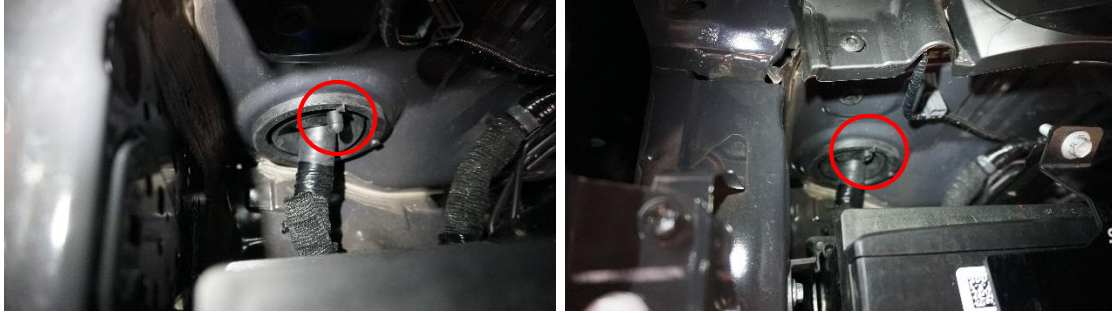
Switch Pros Comm Cable Routing:

1. De-pin the white 4-pin connector on the Comm Cable provided with the switch pros module.
2. Use something that is flexible but stiffer than the wire to help fish it through the grommet in the firewall, for example 1/4" Airline. Use electrical tape to secure the cable to the airline.

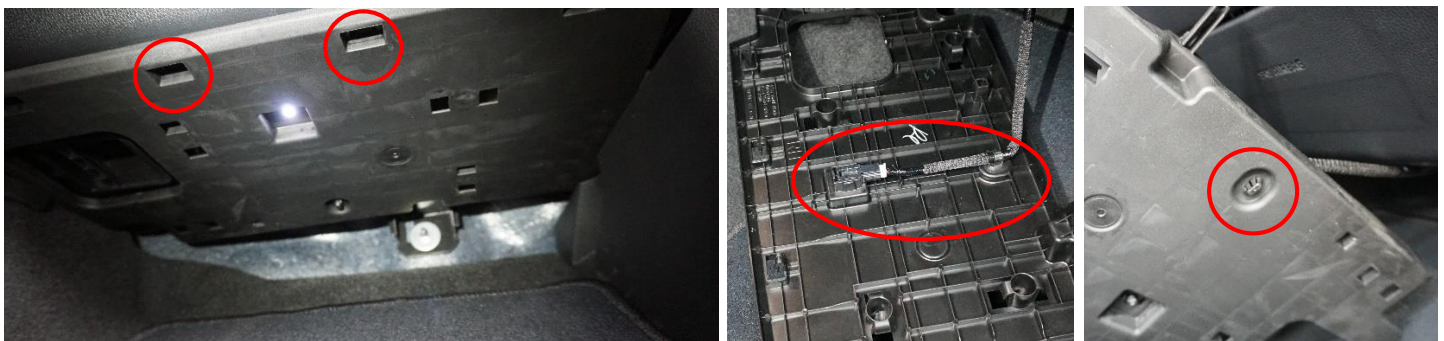


For questions or help with the installation, please email help@sdhqoffroad.com
Store front hours: Mon. – Fri. 8:00am – 5:30pm and Sat. 9:00am – 2:00pm Arizona Time.

3. Use a side cutter to remove the cap on the top pass-through of the passenger side firewall grommet.



4. Open the passenger side front door. Remove the lower dash cover, there are (4) retaining clips on the front edge of the plastic piece, push them toward the front of the truck and pull down on the panel to remove. Disconnect the electrical connector for the foot-well light and squeeze the clip to remove the cable stay.



5. Remove the side cover for the dash, pull on the top of the panel to unlatch it and pull out the bottom, there are (3) clips all located on the lower portion of the panel.



6. Remove the plastic bolt covers for the grab handle on the passenger side a-pillar trim. Use a 10mm socket to remove the (2) bolts that retain the panel. Pull the panel out and down toward the dash and remove the electrical connector for the tweeter.



For questions or help with the installation, please email help@sdhqoffroad.com
Store front hours: Mon. – Fri. 8:00am – 5:30pm and Sat. 9:00am – 2:00pm Arizona Time.

7. Pull the sun visor off of the clip and twist and pull down the clip to remove. Use a Philips screw driver to remove the sun visor.



8. Using a clip tool remove the plastic caps on the overhead grab handle. Then pull out on the grab handle, it may leave the retaining clips in the metal if so pinch the clip together and pull it out of the metal and place back on the grab handle.



9. Pull down on the overhead module, there are (4) clips that retain the panel. Install the key pad mount (**50-1130-U1-9100/RCR12**) into the overhead module refer to the instructions for key pad installation.



For questions or help with the installation, please email help@sdhqoffroad.com
Store front hours: Mon. – Fri. 8:00am – 5:30pm and Sat. 9:00am – 2:00pm Arizona Time.

10. Fish the cable through the grommet and connect the cable to the switch pros module and set the desired amount of slack in the cable prior to the grommet.



11. Fish the cable up through the right side of the dash and to the a-pillar zip tie the the cable to the factory wiring harness running up the a-pillar.



12. Pull down on the front edge of the headliner, be very gentle as the headliner can crease easily. Use the airline to fish the cable over the headliner and into the overhead module cut out.



For questions or help with the installation, please email help@sdhqoffroad.com
Store front hours: Mon. – Fri. 8:00am – 5:30pm and Sat. 9:00am – 2:00pm Arizona Time.

13. Remove the airline from the cable and re-pin the white 4-pin connector onto the comm cable. Connect the switch pros comm cable to the key pad. Test the key pad connection and troubleshoot if needed.



14. Reinstall the overhead module into the roof and the other removed parts, refer to the earlier steps if needed.



15. Installation complete enjoy your power module for your Toyota Tacoma.

*****Double check all hardware is installed correctly and tight*****

*****Re-torque ALL bolts after 100 miles*****



190 S McQueen Rd
Ste 109 Gilbert, AZ 85233
www.sdhqoffroad.com

Follow us on:



Facebook



Instagram

For questions or help with the installation, please email help@sdhqoffroad.com
Store front hours: Mon. – Fri. 8:00am – 5:30pm and Sat. 9:00am – 2:00pm Arizona Time.