



SDHQ Motorsports
190 S McQueen Rd
Ste 109 Gilbert, AZ 85233
Phone: 480-633-2929

Product Packing List

Product: *SDHQ-55-1139-G3*

Description: **2016+ Tacoma Switch Pros RCR-Force-12
Keypad Mount**

_____ (1) SDHQ Tacoma Switch Pros RCR Mount	SDHQ-55-1139-G3-A
_____ (1) Hardware Package	SDHQ-55-1139-G3-B
_____ (4) #10 - 24 x 1" S.S. Socket Head Bolts	
_____ (4) #10 - 24 S.S. Nylock Nuts	
_____ (4) #10 S.S. SAE Washer	

Inspected and Packaged By: _____ **Date:** _____

For questions or help with the installation, please call SDHQ Offroad @ 480-633-2929
Mon.-Fri. 8:00am-5:30pm and Sat. 8:00am-3:30pm Arizona Time. www.sdhqoffroad.com



SDHQ Motorsports
 190 S McQueen Rd
 Ste 109 Gilbert, AZ 85233
 Phone: 480-633-2929

INSTALLATION INSTRUCTIONS

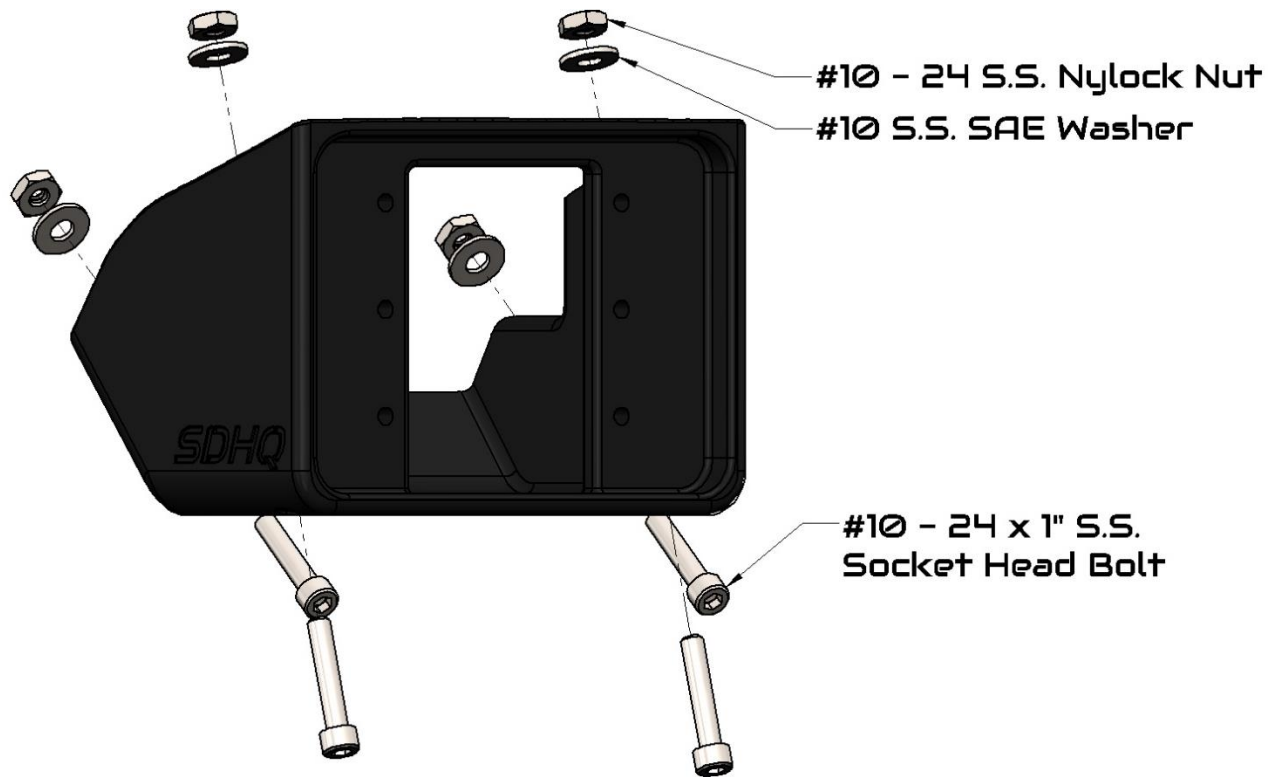
Product: *SDHQ-55-1139-G3*

Description: 2016+ Tacoma Switch Pros RCR-Force-12
 Keypad Mount



Parts List	Hardware List	Required Tools
(1) SDHQ Tacoma Switch Pros RCR Mount SDHQ-55-1139-G3-A (1) SDHQ Hardware Package SDHQ-55-1139-G3-B	(4) #10 - 24 x 1" S.S Socket Head Bolts (4) #10 - 24 S.S. Nylock Nuts (4) #10 S.S. SAE Washers	8mm, 10mm Socket 5/32" Allen Drive Ratchet Panel Removing tool 5/32" & 3/4" Drill Bit Drill Dremel or Razor Blade
Tech Notes		
Be cautious when removing any panel as the clips are fragile. This install utilizes the Switch Pros included hardware for mounting. **Approx. install time = 1 Hour (not including wiring)**		

For questions or help with the installation, please call SDHQ Offroad @ 480-633-2929
 Mon.-Fri. 8:00am-5:30pm and Sat. 8:00am-3:30pm Arizona Time. www.sdhqoffroad.com



READ ALL INSTRUCTIONS THOROUGHLY FROM START TO FINISH BEFORE BEGINNING INSTALLATION!

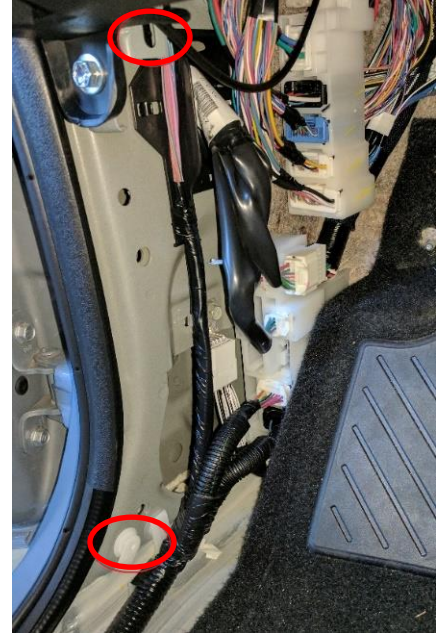
Installation Instructions:

- 1. Preparing your truck.** Remove the driver side floor mat and door sill trim. The door sill trim has two clips, one in the front and one in the back.



For questions or help with the installation, please call SDHQ Offroad @ 480-633-2929
Mon.-Fri. 8:00am-5:30pm and Sat. 8:00am-3:30pm Arizona Time. www.sdhqoffroad.com

2. Remove the driver side kick panel. The kick panel has a plastic nut connecting the back of it to the fire wall. This can be unscrewed by hand. There is two clips connecting the panel to the truck by the door. Both clips pull back and out to the side at a 45° angle. If one or both of the white clips stay in the sheet metal, like the lower clip in the picture, it will need to be removed and reinstalled in the kick panel for proper re-installation.



3. Next, the dash panel under the steering wheel needs to be removed. Using a 10mm socket, remove the (3) bolts at the bottom of the dash circled below in red.

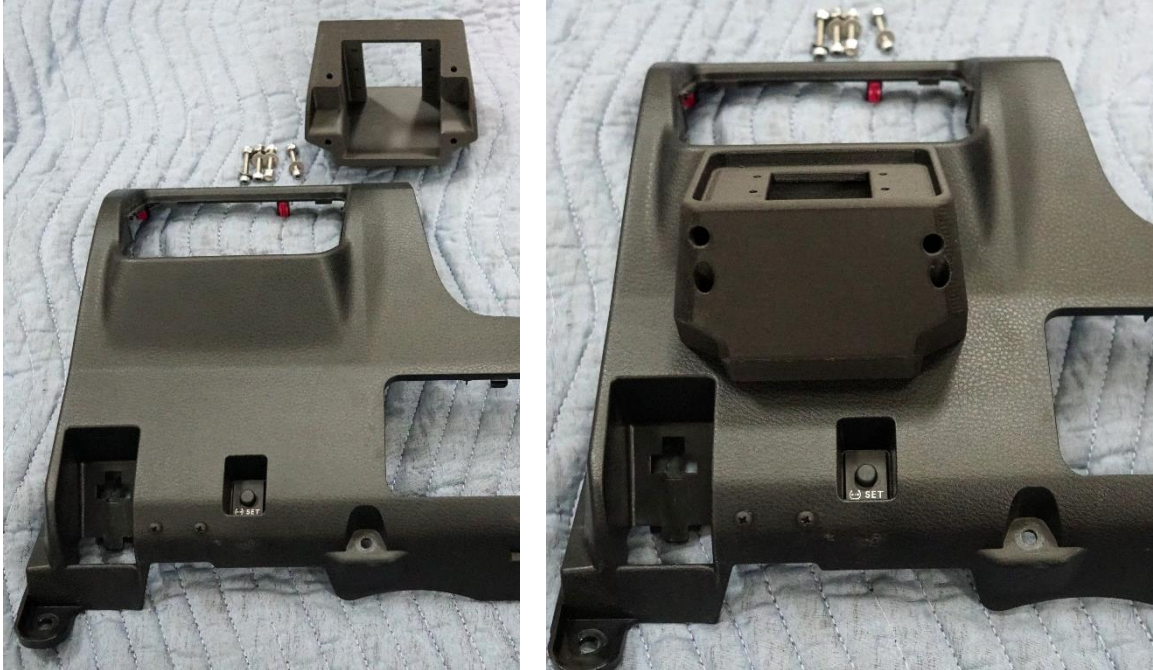


4. **Removing the panel.** Start at the bottom on the driver side of the panel and begin removing panel. There are (3) clips along the bottom that need to be detached first. Then work your way up along the driver side of the panel detaching (3) clips at the top of the panel.

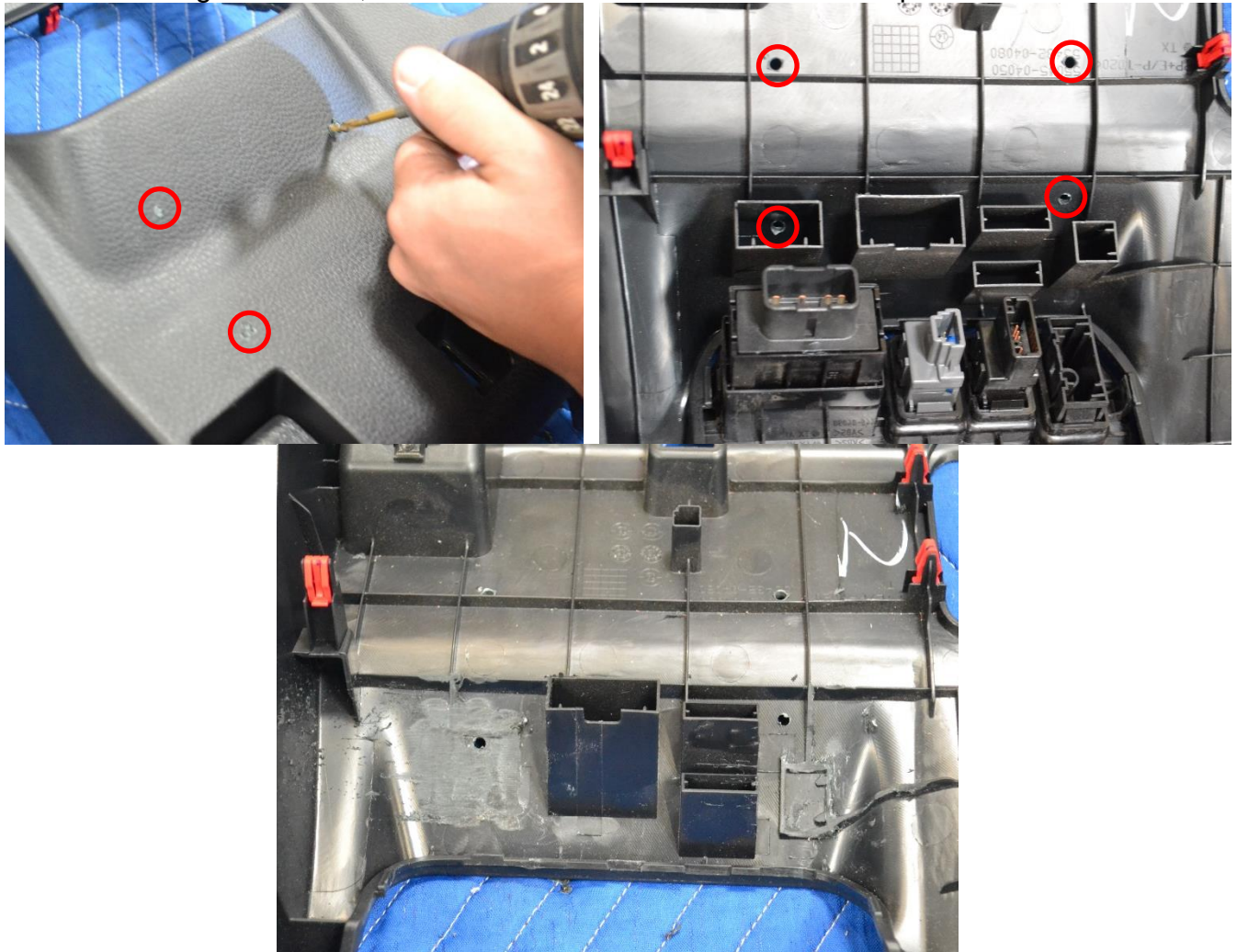
5. Disconnect the wires from the switches. Remove the cubby panel by detaching the (11) clips that secure the panel.



6. Line up the 3D Printed switch pro keypad mount and center it under the switches. When it is in the desired position use a 5/32" drill bit or another sharp slim tool to mark where the holes go.



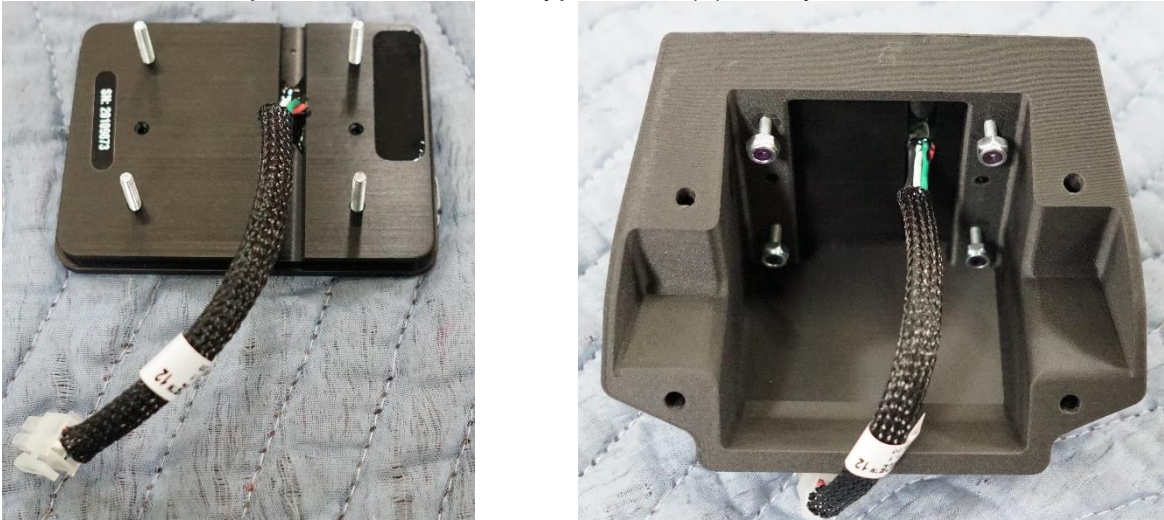
7. With the position for each hole located, use a drill with a 5/32" drill bit to drill the (4) mounting holes out. Using the dremel, clear out the material on the back of the panel as shown below.



8. In the middle of the (4) holes, use a $\frac{3}{4}$ " drill bit and drill a hole through the panel. If you do not have a big enough bit, use the dremel and cut a $\frac{3}{4}$ " square out.



9. **Installing the Switch Pros Keypad.** For the Switch Pros Keypad, apply medium strength thread locker to the (4) #6 mounting studs and thread in by hand. Insert the Switch Pro Keypad onto the front of the panel. Secure the keypad with (4) #6 Nylock Nuts.



10. The $\frac{3}{4}$ " hole in the center is for the Switch Pros wire to go through. Insert the (4) #10 socket head bolts through the bottom of the 3D printed mount. Secure the mount on the back of the panel with #10 washers and nylock nuts. Shown below with the SDHQ 9100 Mount.



11. Finish wiring the Switch Pros Keypad and then reinstall the dash panel, kick panel, door sill trim, and floor mat. Enjoy your SDHQ Built Switch pro keypad mount!

For questions or help with the installation, please call SDHQ Offroad @ 480-633-2929
Mon.–Fri. 8:00am–5:30pm and Sat. 8:00am–3:30pm Arizona Time. www.sdhqoffroad.com

*****Double check all hardware is installed correctly and tight*****

*****Re-torque ALL bolts after 100 miles*****



190 S McQueen Rd
Ste 109 Gilbert, AZ 85233
Phone: 480-633-2929 | Fax: 480-633-1791
www.sdhqoffroad.com

Follow us on:



Facebook



Instagram

For questions or help with the installation, please call SDHQ Offroad @ 480-633-2929
Mon.–Fri. 8:00am–5:30pm and Sat. 8:00am–3:30pm Arizona Time. www.sdhqoffroad.com