



**SDHQ Motorsports**  
**190 S McQueen Rd**  
**Ste 109 Gilbert, AZ 85233**  
**Phone: 480-633-2929**

---

## Product Packing List

**Product:** SDHQ-55-1131-G3

**Description:** 2016+ Tacoma Switch Pros 9100 Keypad Mount

|  |                        |
|--|------------------------|
| _____ (1) SDHQ Tacoma Switch Pros 9100 Mount   | SDHQ-55-1131-G3-A-REV2 |
| _____ (1) Hardware Package                     | SDHQ-55-1131-G3-B      |
| _____ (4) #10 - 24 x 1" S.S. Socket Head Bolts |                        |
| _____ (4) #10 - 24 S.S. Nylock Nuts            |                        |
| _____ (4) #10 S.S. SAE Washer                  |                        |

**Inspected and Packaged By:** \_\_\_\_\_ **Date:** \_\_\_\_\_

For questions or help with the installation, please call SDHQ Offroad @ 480-633-2929  
Mon.-Fri. 8:00am-5:30pm and Sat. 8:00am-3:30pm Arizona Time. [www.sdhqoffroad.com](http://www.sdhqoffroad.com)

**For questions or help with the installation, please call SDHQ Offroad @ 480-633-2929  
Mon.–Fri. 8:00am–5:30pm and Sat. 8:00am–3:30pm Arizona Time. [www.sdhqoffroad.com](http://www.sdhqoffroad.com)**



SDHQ Motorsports  
 190 S McQueen Rd  
 Ste 109 Gilbert, AZ 85233  
 Phone: 480-633-2929

## INSTALLATION INSTRUCTIONS

**Product:** SDHQ-55-1131-G3

**Description:** 2016+ Tacoma Switch Pros 9100 Keypad Mount

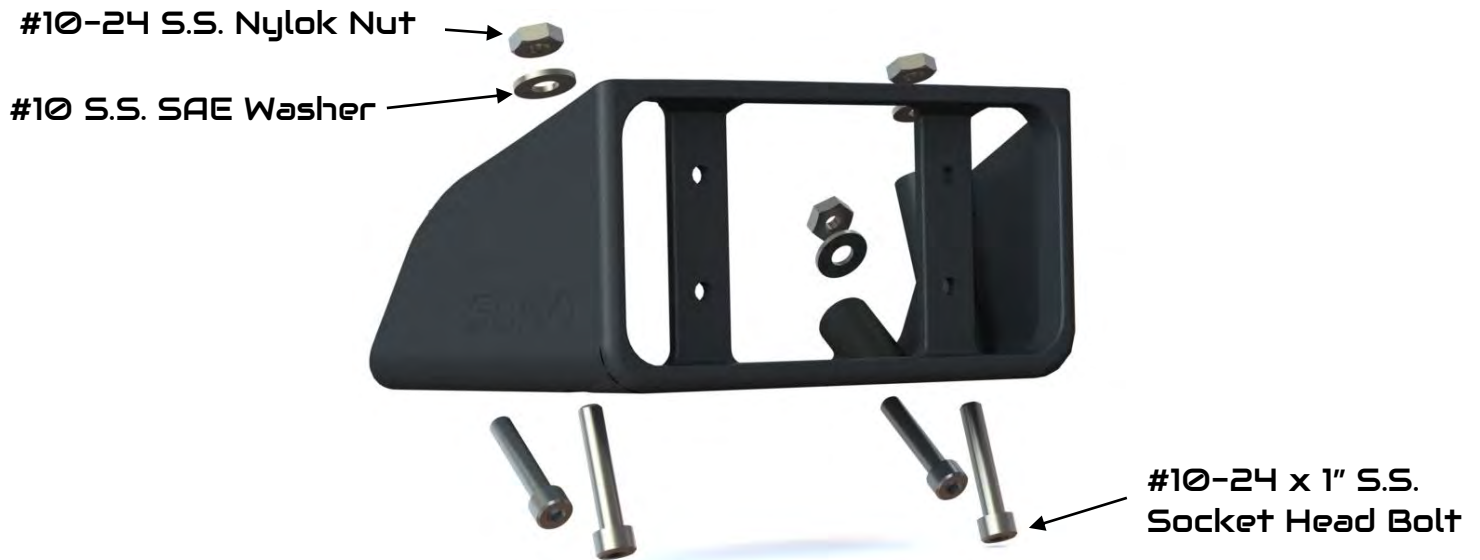


| <u>Parts List</u>  | <u>Hardware List</u>   | <u>Required Tools</u>  |
|--|--|--|
| (1) SDHQ Tacoma Switch Pros 9100 Mount<br>SDHQ-55-1131-G3-A-REV2<br>(1) SDHQ Hardware Package<br>SDHQ-55-1131-G3-B | (4) #10 - 24 x 1" S.S Socket Head Bolts<br>(4) #10 - 24 S.S. Nylock Nuts<br>(4) #10 S.S. SAE Washers | 8mm, 10mm Sockets<br>5/32" Allen Drive Ratchet<br>Panel Removing tool<br>5/32" & 3/4" Drill Bit<br>Drill<br>Dremel |

### **Tech Notes**

Be cautious when removing any panel as the clips are fragile.  
 This install utilizes the Switch Pros included hardware for mounting.  
**\*\*Approx. install time = 1 Hour (not including wiring)\*\***

For questions or help with the installation, please call SDHQ Offroad @ 480-633-2929  
 Mon.-Fri. 8:00am-5:30pm and Sat. 8:00am-3:30pm Arizona Time. [www.sdhqoffroad.com](http://www.sdhqoffroad.com)



**\*\*\*READ ALL INSTRUCTIONS THOROUGHLY FROM START TO FINISH BEFORE BEGINNING INSTALLATION! \*\*\***

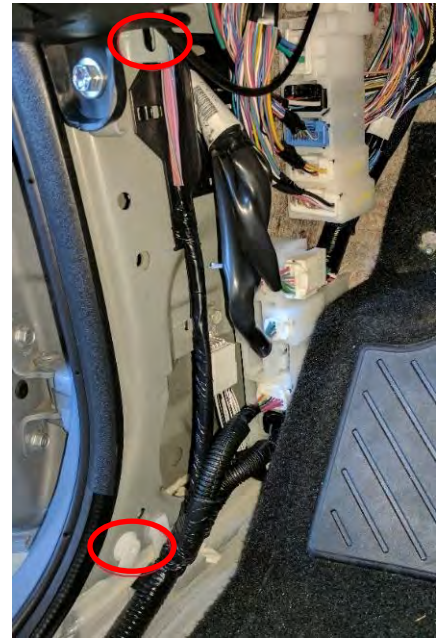
### **Installation Instructions:**

- 1. Preparing your truck.** Remove the driver side floor mat and door sill trim. The door sill trim has two clips, one in the front and one in the back.



- 2. Remove the driver side kick panel.** The kick panel has a plastic nut connecting the back of it to the fire wall. This can be unscrewed by hand. There is two clips connecting the panel to the truck by the door. Both clips pull back and out to the side at a 45° angle. If one or both of the white clips stay in the sheet metal, like the lower clip in the picture, it will need to be removed and reinstalled in the kick panel for proper re-installation.

For questions or help with the installation, please call SDHQ Offroad @ 480-633-2929  
 Mon.–Fri. 8:00am–5:30pm and Sat. 8:00am–3:30pm Arizona Time. [www.sdhqoffroad.com](http://www.sdhqoffroad.com)



3. Next, the dash panel under the steering wheel needs to be removed. Using a 10mm socket, remove the (3) bolts at the bottom of the dash circled below in red.



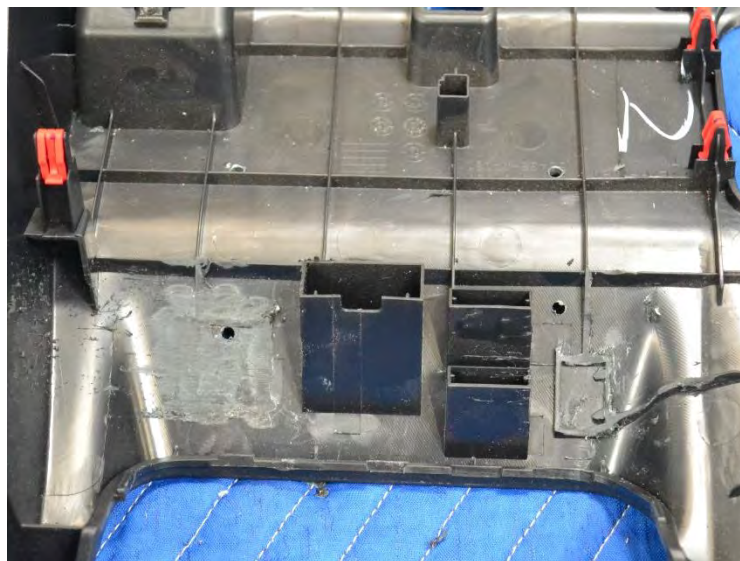
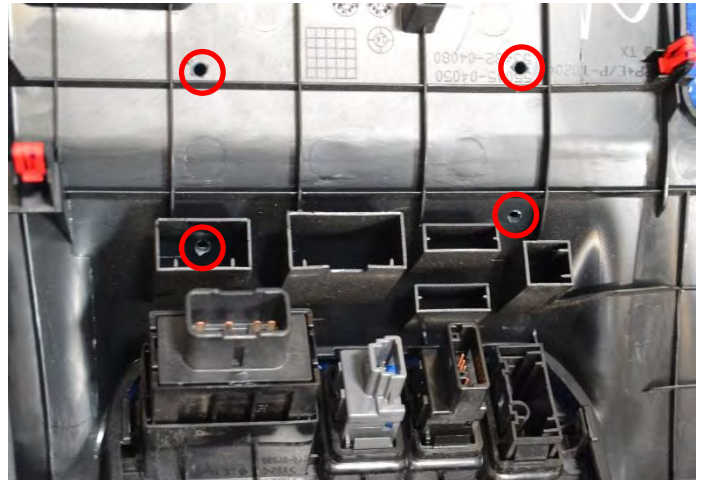
4. **Removing the panel.** Start at the bottom on the driver side of the panel and begin removing panel. There are (3) clips along the bottom that need to be detached first. Then work your way up along the driver side of the panel detaching (3) clips at the top of the panel.
5. Disconnect the wires from the switches. Remove the cubby panel by detaching the (11) clips that secure the panel.



6. Line up the 3D Printed switch pro keypad mount and center it under the switches. When it is in the desired position use a 5/32" drill bit or another sharp slim tool to mark where the holes go.



7. With the position for each hole located, use a drill with a 5/32" bit to drill the (4) mounting holes out. Using the dremel, clear out the material on the back of the panel as shown below.



8. In the middle of the (4) holes, use a  $\frac{3}{4}$ " drill bit and drill a hole through the panel. If you do not have a big enough bit, use the dremel and cut a  $\frac{3}{4}$ " square out.



9. **Installing the Switch Pros Keypad.** For the Switch Pros Keypad, apply medium strength thread locker to the (4) #6 mounting studs and thread in by hand. Insert the Switch Pro Keypad onto the front of the panel. Secure the keypad with (4) #6 Nylock Nuts.



10. The  $\frac{3}{4}$ " hole in the center is for the Switch Pros wire to go through. Insert the (4) #10 socket head bolts through the bottom of the 3D printed mount. Secure the mount on the back of the panel with #10 washers and nylock nuts.



11. Finish wiring the Switch Pros Keypad and then reinstall the dash panel, kick panel, door sill trim, and floor mat. Enjoy your SDHQ Built Switch pro keypad mount!

For questions or help with the installation, please call SDHQ Offroad @ 480-633-2929  
Mon.-Fri. 8:00am-5:30pm and Sat. 8:00am-3:30pm Arizona Time. [www.sdhqoffroad.com](http://www.sdhqoffroad.com)

**\*\*\*Double check all hardware is installed correctly and tight\*\*\***

**\*\*\*Re-torque ALL bolts after 100 miles\*\*\***



190 S McQueen Rd  
Ste 109 Gilbert, AZ 85233  
Phone: 480-633-2929 | Fax: 480-633-1791  
[www.sdhqoffroad.com](http://www.sdhqoffroad.com)

Follow us on:



Facebook



Instagram

For questions or help with the installation, please call SDHQ Offroad @ 480-633-2929  
Mon.–Fri. 8:00am–5:30pm and Sat. 8:00am–3:30pm Arizona Time. [www.sdhqoffroad.com](http://www.sdhqoffroad.com)