



SDHQ Motorsports
190 S McQueen Rd
Ste 109 Gilbert, AZ 85233
Phone: 480-633-2929

Product Packing List

Product: SDHQ-54-1660-G5

Description: 2014+ 4Runner Zeon Mounting Kit

- _____ (1) Control Box Relocation Bracket SDHQ-54-1660-G5-A
- _____ (1) Hardware Package SDHQ-54-1660-G5-B
- _____ (1) SDHQ Zeon Relocation Wiring Kit (SDHQ-02-1660-[A, F1, F2])
- _____ (1) 4 Pin Plug Extension (48")
- _____ (3) 8-2 AWG Battery Terminal Boots
- _____ (4) ¼" ID x ½" OD x 5/16" T Nylon Control Box Spacers
- _____ (2) ¼" Push In Zip Ties
- _____ (4) Edge Clip Zip ties
- _____ (5) 8" Zip Ties
- _____ (3) ¼" - 20 x 1" S.S. Button Head Bolts
- _____ (6) ¼" S.S. Washers
- _____ (3) ¼" - 20 S.S. Locknuts
- _____ (4) M6 - 1.0 x 22mm Countersunk Bolts

Inspected and Packaged By: _____ Date: _____

For questions or help with the installation, please call SDHQ Offroad @ 480-633-2929
Mon.-Fri. 8:00am-5:30pm and Sat. 8:00am-3:30pm Arizona Time. www.sdhqoffroad.com

**For questions or help with the installation, please call SDHQ Offroad @ 480-633-2929
Mon.–Fri. 8:00am–5:30pm and Sat. 8:00am–3:30pm Arizona Time. www.sdhqoffroad.com**



SDHQ Motorsports
 190 S McQueen Rd
 Ste 109 Gilbert, AZ 85233
 Phone: 480-633-2929

INSTALLATION INSTRUCTIONS

Product: SDHQ-54-1660-G5

Description: 2014+ 4Runner Zeon Mounting Kit

*****This kit is only needed if you are using a Warn Zeon Winch*****



Parts List	Hardware List	Required Tools
(1) Control Box Relocation Bracket SDHQ-54-1660-G5-A (1) Hardware Package SDHQ-54-1660-G5-B	(3) 20" 4AWG Cables (A, F1, F2) (1) 4 Pin Plug Extension (48") (3) Battery Terminal Boots (4) Control Box Spacers (2) Push In Zip Ties (4) Edge Clip Zip Ties (5) 8" Zip Ties (3) 1/4" - 20 x 1" S.S. Button Head Bolts (6) 1/4" S.S. Washers (3) 1/4" - 20 S.S. Locknuts (4) M6 - 1.0 x 22mm Countersunk Bolts	7/16" socket/ratchet 1/2" socket/wrench 13mm socket/wrench 15mm socket/wrench T25 Torx bit 4mm allen wrench T30 Torx bit
Tech Notes		
This kit is designed specifically for the Warn Zeon series winches. Make sure all wiring is free from abrasion and pinching.		

*****READ ALL INSTRUCTIONS THOROUGHLY FROM START TO FINISH BEFORE BEGINNING INSTALLATION!*****

Installation Instructions:

1. Open your Zeon Winch, SDHQ Winch Mount System, and layout all parts and hardware (preferably on a clean table). Check to make sure you are not missing any parts and that there is no damage.
2. Remove the black terminal cover on the top of the winch with your T25 Torx, remove the (3) ½” nuts and washers underneath, and set aside for future use.

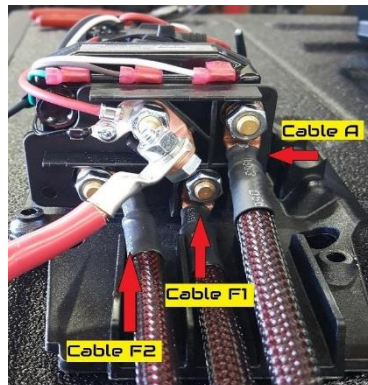
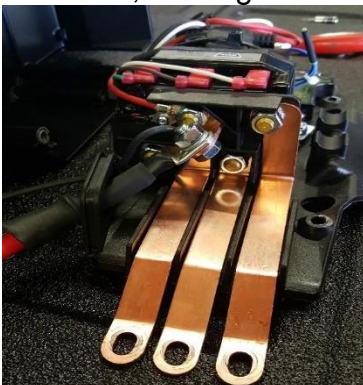


3. Next remove the 13mm bolt securing the small ground wire that goes to the control box, the 4 wire connector, and the (4) T30 Torx head screws that hold the control box to the winch. Remove control box from winch and discard the screws.



4. Remove the (4) T30 Torx head screws that hold the control box cover to base plate, remove control box cover and set aside.

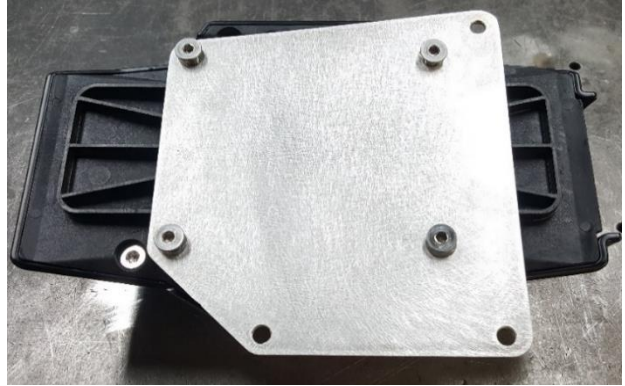
5. Take note that the (3) terminals on the control box solenoid are in line with the (3) terminals on the winch. The cables are labeled for the corresponding connections. Starting from the top, remove the copper strip and replace with the cable provided in the SDHQ Zeon Relocation Kit. Take note that the bent terminal goes to the control box solenoid and the straight terminal goes to the winch (the provided rubber terminal boots go on the winch side). Repeat this step for the other two terminals, making sure that the cables are connected in the same order as the copper strips were.



6. Reassemble the control box, reversing step 4.

For questions or help with the installation, please call SDHQ Offroad @ 480-633-2929
Mon.–Fri. 8:00am–5:30pm and Sat. 8:00am–3:30pm Arizona Time. www.sdhqoffroad.com

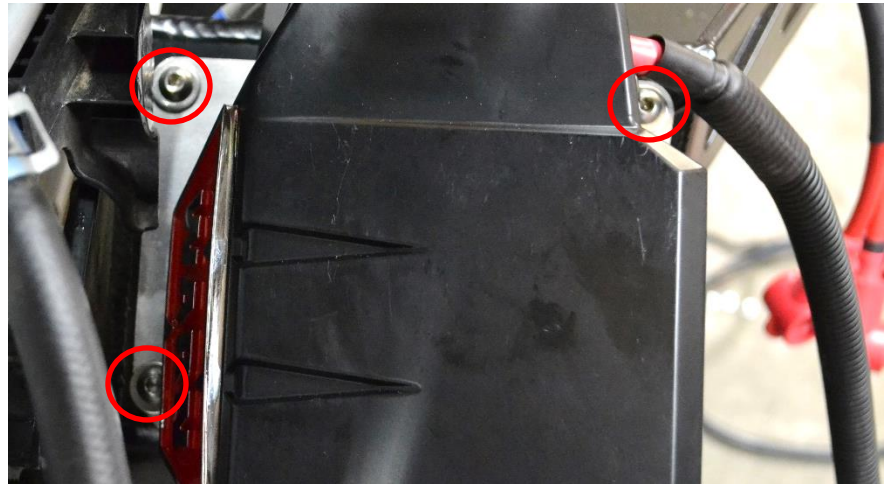
7. Use the provided spacers and attach control box to mount as pictured.



8. Plug in the supplied 4 pin harness extension and secure using the (2) push in zip ties that will attach to the top of the winch. Connect the (3) power cables to the correct posts on the winch.



9. Mount your control box to the winch mount with the (3) provided 1/4" bolts, washers and locknuts.



10. Install your winch to the Winch Mount. Make sure to connect the motor ground and control box ground to the winch before bolting the winch down because it is difficult to reach once bolted down. Use the rear (2) winch bolts to install the Lower Bumper Bracket.

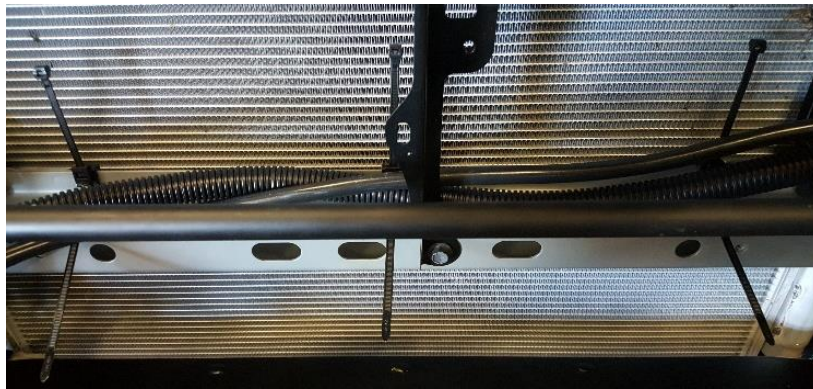


For questions or help with the installation, please call SDHQ Offroad @ 480-633-2929
Mon.-Fri. 8:00am-5:30pm and Sat. 8:00am-3:30pm Arizona Time. www.sdhqoffroad.com

11. Install the Battery Terminal Boot onto the flat ring terminal end on all three wires. Connect the (3) power cables to the correct posts on the winch. Plug in the 4 pin extension harness into the back of the control box and secure using the (3) push in zip ties that will attach to the back of the winch mount in the provided holes.



12. Use the provided edge clip zip ties to secure the wiring along the core support and behind the headlight up to the battery.



13. You are now ready to finish the installation of your SDHQ Winch Mount System! Please refer back to your Toyota 4Runner Winch Mount Instructions.

*****Double check all hardware is installed correctly and tight*****

*****Re-torque ALL bolts after 100 miles*****



190 S McQueen Rd
Ste 109 Gilbert, AZ 85233
Phone: 480-633-2929 | Fax: 480-633-1791
www.sdhqoffroad.com

Follow us on:



Facebook



Instagram

For questions or help with the installation, please call SDHQ Offroad @ 480-633-2929
Mon.–Fri. 8:00am–5:30pm and Sat. 8:00am–3:30pm Arizona Time. www.sdhqoffroad.com