



SDHQ Motorsports
190 S McQueen Rd
Ste 109 Gilbert, AZ 85233
Phone: 480-633-2929

Product Packing List

Product: SDHQ-54-1651-G5

Description: 2010+ 4Runner HWM Support Bracket Upgrade

_____ (2) Support Brackets w/ Recovery	SDHQ-54-1651-G5-A
_____ (2) Side Load Support Brackets	SDHQ-54-1651-G5-B
_____ (1) Hardware Package	
_____ (4) 3/8" - 16 x 1 1/2" Grade 8 Bolts	
_____ (4) 3/8" - 16 Grade 8 Lock Nuts	
_____ (2) 1/2" - 13 x 3" Grade 8 Bolt	
_____ (4) 1/2" Grade 8 Washer	
_____ (2) 1/2" - 13 Grade 8 Lock Nut	
_____ (2) M12 - 1.25 x 35mm Class 10.9 Bolts	
_____ (2) M10 - 1.25 x 35mm Class 10.9 Flange Head Bolts	

Inspected and Packaged By: _____ **Date:** _____

For questions or help with the installation, please call SDHQ Offroad @ 480-633-2929
Mon.-Fri. 8:00am-5:30pm and Sat. 8:00am-3:30pm Arizona Time. www.sdhqoffroad.com

**For questions or help with the installation, please call SDHQ Offroad @ 480-633-2929
Mon.–Fri. 8:00am–5:30pm and Sat. 8:00am–3:30pm Arizona Time. www.sdhqoffroad.com**



SDHQ Motorsports
190 S McQueen Rd
Ste 109 Gilbert, AZ 85233
Phone: 480-633-2929

INSTALLATION INSTRUCTIONS

Product: *SDHQ-54-1651-G5*

Description: 2010+ 4Runner HWM Support Bracket Upgrade



<u>Parts List</u>	<u>Hardware List</u>	<u>Required Tools</u>
(2) Support Bracket w/ Recovery SDHQ-54-1651-G5-A (2) Side Load Support Bracket SDHQ-54-1651-G5-B (1) Hardware Package	(4) 3/8" - 16 x 1 1/2" Bolts (4) 3/8" - 16 Lock Nuts (2) M12 - 1.25 x 35mm Bolts (2) M10 - 1.25 x 35mm Bolts (2) 1/2" - 13 x 3" Grade 8 Bolt (2) 1/2" - 13 Grade 8 Lock Nut (4) 1/2" Grade 8 Washer	19mm Socket & Wrench 17mm Socket 14mm Socket & Wrench Ratchet
<u>Tech Notes</u>		
This kit reuses the washers that were already installed on your HWM.		
Approx. Install Time: 1 Hour		

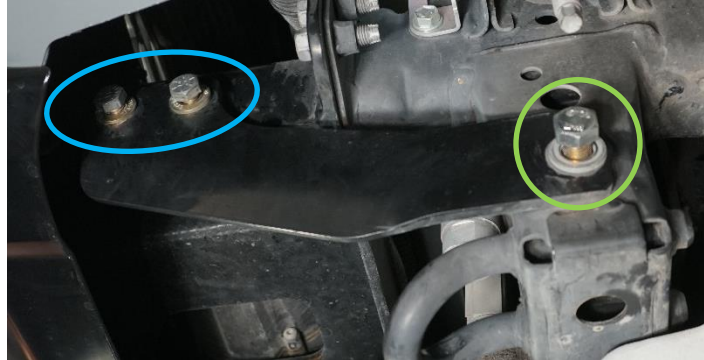
READ ALL INSTRUCTIONS THOROUGHLY FROM START TO FINISH BEFORE BEGINNING INSTALLATION!

For questions or help with the installation, please call SDHQ Offroad @ 480-633-2929
Mon.-Fri. 8:00am-5:30pm and Sat. 8:00am-3:30pm Arizona Time. www.sdhqoffroad.com

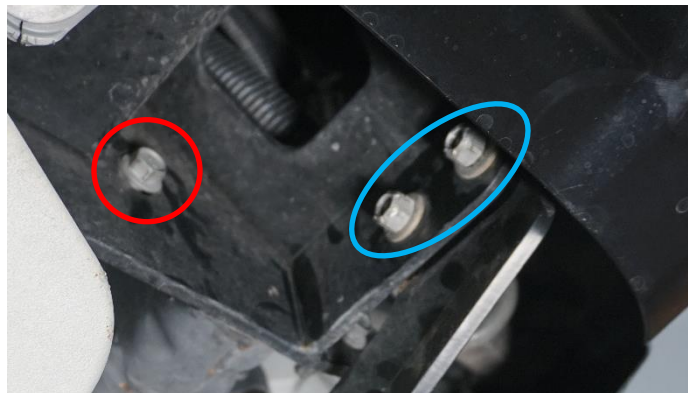


Installation Instructions:

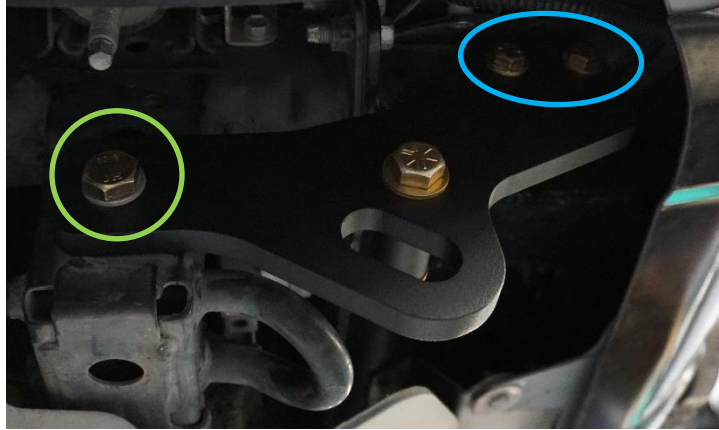
1. Unbox your Support Bracket Upgrade and lay out all included pieces. Check that everything is present and gather all necessary tools.
2. Start by removing the driver side support bracket. Use a 17mm socket to remove the M12 bolt shown in green and a 14mm socket/wrench to remove the (2) bolts shown in blue. Set the washers aside to be reused with the longer supplied hardware.



3. Next remove the center most frame horn bolt using a 14mm socket, these bolts will not be reused.



- Loosely bolt the new Support Bracket in place starting with the longer supplied (2) 3/8" bolts in the front of the bracket. Reuse the washers from the bolts removed earlier when installing hardware. Then install the M12 bolt on the rear of the bracket leaving it loose enough for adjustment.



- To install the side load bracket, start by threading in the supplied M10 bolt to support the bracket to the HWM. Then align the side load bracket with the lower support brackets and install the 1/2" bolt as shown. Tighten the bolts in reverse order of installation.



- Repeat steps 2-5 for the passenger side of the vehicle. Enjoy your new SDHQ support bracket upgrade with recovery points.

Double check all hardware is installed correctly and tight

Re-torque ALL bolts after 100 miles



190 S McQueen Rd
Ste 109 Gilbert, AZ 85233
Phone: 480-633-2929 | Fax: 480-633-1791
www.sdhqoffroad.com

Follow us on:



Facebook



Instagram

For questions or help with the installation, please call SDHQ Offroad @ 480-633-2929
Mon.–Fri. 8:00am–5:30pm and Sat. 8:00am–3:30pm Arizona Time. www.sdhqoffroad.com