



SDHQ Motorsports
190 S McQueen Rd
Ste 109 Gilbert, AZ 85233
Phone: 480-633-2929

Product Packing List

Product: SDHQ-54-1540-G5

Description: 2003+ 4Runner & 2003+ Lexus GX
470/460 Rock Sliders

_____ (1) Driver Side Slider	SDHQ-54-1540-G5-A
_____ (1) Passenger Side Slider	SDHQ-54-1540-G5-B
_____ (2) Front Inner Single Brackets	SDHQ-54-1540-G5-C
_____ (2) Front Inner Double Brackets	SDHQ-54-1540-G5-D
_____ (2) Rear Inner Brackets	SDHQ-50-1540-P4
_____ (1) Hardware Package	SDHQ-54-1540-G5-E
_____ (6) 3/8" - 16 x 1 1/4" Grade 8 Bolts	
_____ (6) 3/8" Grade 8 Flat Washers	
_____ (6) 3/8" Grade 8 Lock Washers	
_____ (2) 7/16" - 14 x 1 1/2" Grade 8 Bolts	
_____ (2) 7/16" Grade 8 Flat Washers	
_____ (2) 7/16" Grade 8 Lock Washers	
_____ (2) M14 - 2.0 x 100mm Bolts	
_____ (4) M14 Flat Washers	
_____ (2) M14 - 2.0 Lock Nuts	
_____ (14) M8 - 1.25 x 30mm Grade 10.9 Bolts	
_____ (14) M8 Grade 10.9 Flat Washers	
_____ (1) Loctite Packet	

Inspected and Packaged By: _____ Date: _____

For questions or help with the installation, please call SDHQ Offroad @ 480-633-2929
Mon.-Fri. 8:00am-5:30pm and Sat. 8:00am-3:30pm Arizona Time. www.sdhqoffroad.com

**For questions or help with the installation, please call SDHQ Offroad @ 480-633-2929
Mon.–Fri. 8:00am–5:30pm and Sat. 8:00am–3:30pm Arizona Time. www.sdhqoffroad.com**



SDHQ Motorsports
 190 S McQueen Rd
 Ste 109 Gilbert, AZ 85233
 Phone: 480-633-2929

INSTALLATION INSTRUCTIONS

Product: SDHQ-54-1540-G5

Description: 2003+ Toyota 4Runner & 2003+ GX
 470/460 Rock Sliders



<u>Parts List</u>	<u>Hardware List</u>	<u>Required Tools</u>
(1) Driver Side Slider SDHQ-54-1540-G5-A (1) Passenger Side Slider SDHQ-54-1540-G5-B (2) Front Inner Single Bracket SDHQ-54-1540-G5-C (2) Front Inner Double Bracket SDHQ-54-1540-G5-D (2) Rear Inner Bracket SDHQ-50-1540-P4 (1) Hardware Package SDHQ-54-1540-G5-E	(6) 3/8"-16 x 1 1/4" Grade 8 Bolts (6) 3/8" Grade 8 Flat Washers (6) 3/8" Grade 8 Lock Washers (2) 7/16"-14 x 1 1/2" Grade 8 Bolts (2) 7/16" grade 8 Flat Washers (2) 7/16" Grade 8 Lock Washers (2) M14 - 2.0 x 100mm Bolts (4) M14 Flat Washers (2) M14 - 2.0 Lock Nuts (14) M8 - 1.25 x 30 Grade 10.9 Bolts (14) M8 Grade 10.9 Flat Washers (1) Loctite Packet	-9/16" socket/wrench -5/8" socket/wrench -10mm socket/wrench -12mm socket/wrench -13mm socket/wrench -19mm socket/wrench -22mm socket/wrench 4 th Generation 4Runners & select GX 460s: -7mm drill bit -1/8" pilot bit -8mm-1.25 metric tap -Center punch

Tech Notes

Follow instructions carefully in order to save time and frustration. It is recommended the install is performed by at least 2 qualified technicians. Use red Loctite on all hardware.

For strongest and best fit, use a jack under each mount when tightening.

Drilling and tapping holes is required for fitment on 2003-2009 4Runners/GX 470.

Select GX 460s will require (2) holes to be tapped and drilled for correct installation.

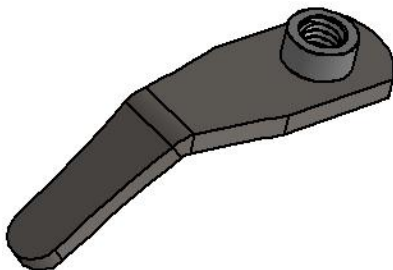
Removal or trimming of GX 460 running boards is required.

****Approx. install time = 2 - 4+ hours****

For questions or help with the installation, please call SDHQ Offroad @ 480-633-2929
 Mon.-Fri. 8:00am-5:30pm and Sat. 8:00am-3:30pm Arizona Time. www.sdhqoffroad.com



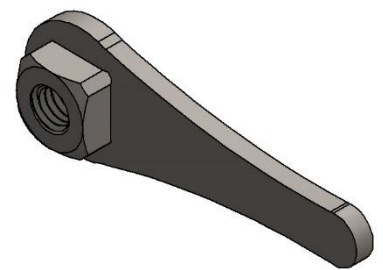
Front Inner Single Bracket
SDHQ-54-1540-G5-C



Front Inner Double Bracket
SDHQ-54-1540-G5-D



Rear Inner Bracket
SDHQ-50-1540-P4



*****READ ALL INSTRUCTIONS THOROUGHLY FROM START TO FINISH BEFORE BEGINNING INSTALLATION! *****

For questions or help with the installation, please call SDHQ Offroad @ 480-633-2929
Mon.–Fri. 8:00am–5:30pm and Sat. 8:00am–3:30pm Arizona Time. www.sdhqoffroad.com

Installation Instructions:

1. **Preparing your GX 470/460.** The running boards will need to be removed prior to install. Start by removing the 10mm bolts holding the trim in the passenger wheel wells. (2) in the front and (1) in the rear. Then remove the (2) Philips Screws located on the bottom of each door seal with the doors open. **(If your vehicle is a 4Runner skip to Step 7, GX 460 shown below)**



2. **Cont.** Next using a plastic trim removal tool, pull up on the plastic step plate and remove from the vehicle. Then remove the (3) 10mm bolts on top of the running boards and set aside.



For questions or help with the installation, please call SDHQ Offroad @ 480-633-2929
Mon.–Fri. 8:00am–5:30pm and Sat. 8:00am–3:30pm Arizona Time. www.sdhqoffroad.com

3. **Cont.** Remove the wiring harness from the bottom of the running boards. Then remove the (2) 12mm bolts on each of the (3) mounts supporting the running board. Remove the trim and running board by pulling away from the vehicle.



4. **Running Board Trimming.** Remove the aluminum step pieces from the running board once off the vehicle. Replace the running board on the vehicle and secure it with the (2) Philips screws and (3) 10mm bolts removed in **Step 1**.



5. **Trimming Cont.** Measurements below are for GX 460, double check your GX 470 before cutting. Measuring from top of the running board down the recommended minimum trim for the front is 3 ¼". For the rear trim line the recommended minimum is 1 ½" from the top. Start with a longer measured distance and trim to preferred appearance. Double check all measurements before starting any cuts. Shown below is the front cut of the running board measured at 3 ¼".



For questions or help with the installation, please call SDHQ Offroad @ 480-633-2929
Mon.–Fri. 8:00am–5:30pm and Sat. 8:00am–3:30pm Arizona Time. www.sdhqoffroad.com



6. **Cont.** Follow the same mark and cut process for the rear of the running board shown below cut at 1.5". An additional piece of running board may need to be trimmed for slider clearance towards the back of the vehicle depending on trim distance used when cutting the rear of the panel. This area will need to be checked when installing the sliders to help mark this section for desired fitment. Remove the sliders to make the cut as necessary.



7. **Preparing your Vehicle.** If your vehicle is equipped with a gas tank skid plate, remove the (4) 12mm bolts holding it on to the frame and let the side of the skid plate hang down. In front of the rear tires on both sides, remove the (2) 10mm bolts that connect the wind deflector to the body.



8. **If you do not have KDSS, skip to step 10.** Remove the (4) 12mm bolts holding the KDSS covers on. Remove the (2) 12mm bolts holding the hard lines for the KDSS onto the frame, this will give some extra room when installing the sliders.



9. Remove the (2) lower 12mm bolts and the (1) upper 12mm bolt that hold the KDSS accumulators onto the side of the frame.

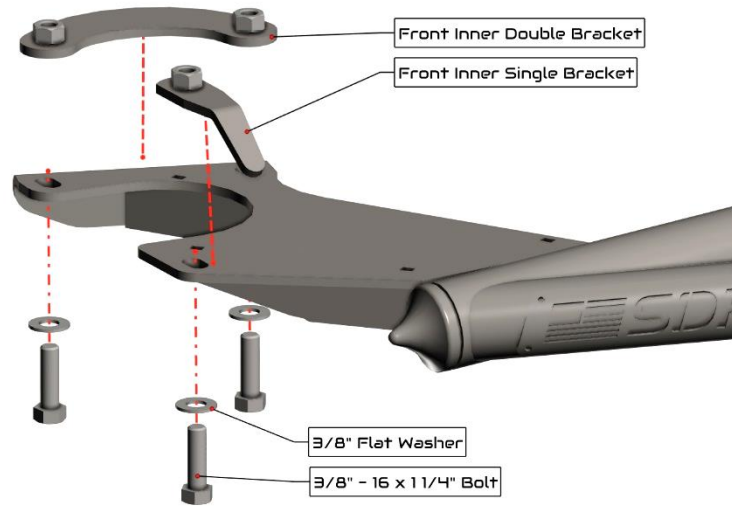




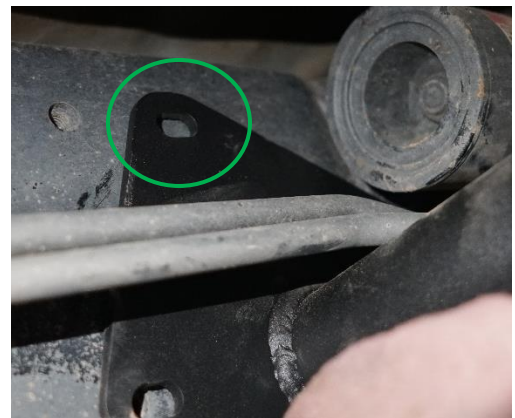
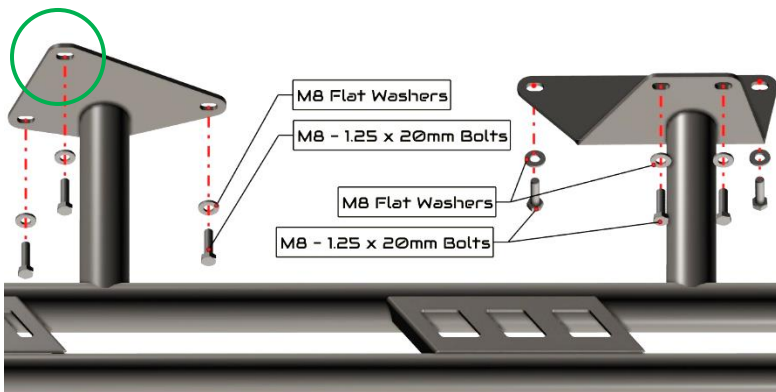
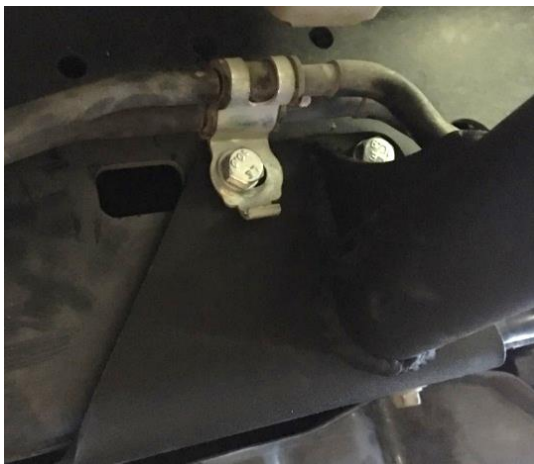
10. Remove the driver's side lower link bolt (19mm). Only remove one link bolt at a time so you do not injure yourself or damage your vehicle.

11. Installing the Sliders. Insert the Front Inner Double Bracket and the Front Inner Single Bracket into the front body mount. The Front Inner Double Bracket locates on the lower 2 open holes with the nuts facing up. The Front Inner Single Bracket locates in the outer open hole with the nut facing up. Driver's side is shown below. Use the provided 3/8" bolts to mount the front bracket. Leave hardware loose until all hardware has been started.





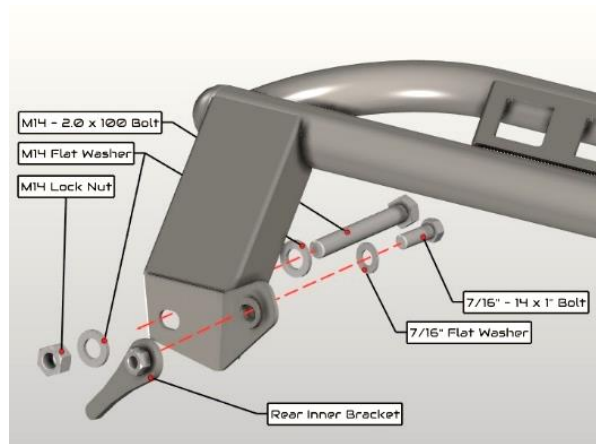
12. The 2 center brackets share some of the same holes as the KDSS accumulator and line brackets. Use the provided metric hardware to mount the center brackets. The 3rd bracket from the front uses the factory gas tank skid plate hardware for the lower portion of the bracket. Reinstall the (4) 12mm bolts KDSS covers and the (2) 12mm bolts connecting the KDSS hard lines to the frame. Leave hardware loose until all hardware has been started.



(GX 460) On select GX 460s the top hole on the front center mount of the driver side will need to be drilled and tapped shown in green above. Mark the center hole and use a 7mm drill bit for the tap clearance hole. Then use a M8 x 1.25 tap to cut the threads into the frame.

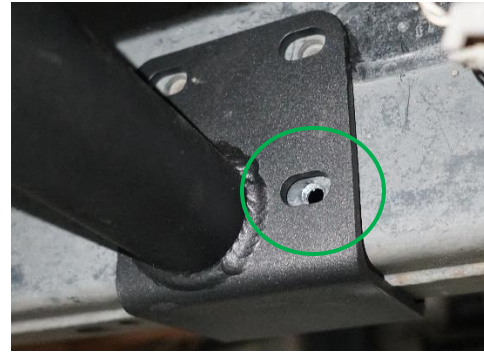
For questions or help with the installation, please call SDHQ Offroad @ 480-633-2929
 Mon.–Fri. 8:00am–5:30pm and Sat. 8:00am–3:30pm Arizona Time. www.sdhqoffroad.com

13. Use the provided M14 bolt, nut, and washers to bolt your lower rear link and rear slider bracket together. Also use the Rear Inner Bracket and provided hardware for the front section of the rear bracket. Leave hardware loose until all hardware has been started. It may be necessary to jack up the rear of the vehicle and place the frame on stands. This will unload the suspension and allow the lower link to move easier when trying to install the M14 Bolt.



14. With all hardware started on the driver side, everything can be tightened with the vehicle on the ground. It is recommended to use a jack under each mount when tightening. Tighten the rear mount 7/16" and M14 hardware first. Tighten the 3/8" hardware on the front mount next. Finally, tighten the M8 hardware on the middle two mounts. Repeat the same step for the passenger side. Pictured below is the passenger side middle mounting points.





(GX 460) On select GX 460s the rear center mount on the passenger side will need the bottom right mounting hole drilled and tapped shown in green above. Mark the center hole and use a 7mm drill bit for the tap clearance hole. Then use a M8 x 1.25 tap to cut the threads into the frame.

2003-09 4Runners and GX 470: A total of (8) holes will need to be drilled and tapped for proper fitment. (5) holes are on the passenger side and (3) holes are on the driver side.

1. The sliders will need to be mounted before any drilling. Follow steps 5 and 7 from above to mount the sliders.
2. On the driver side, locate the front middle mounting point. There are (3) slots on the mount that will need to be drilled out. Fill in the frame where the slots on the mount are with a sharpie.



3. Remove the driver side slider. Use a center punch to mark the frame. Use a 1/8" pilot bit and begin drilling into the frame.



For questions or help with the installation, please call SDHQ Offroad @ 480-633-2929
Mon.-Fri. 8:00am-5:30pm and Sat. 8:00am-3:30pm Arizona Time. www.sdhqoffroad.com

4. Use a 7mm bit and finish drilling the (3) holes on the driver side. Tap the holes with an 8mm x 1.25 metric tap.



5. Install the driver side sliders. Follow steps 2-4 on the passenger side. The passenger side will need the same (3) holes drilled out on the front middle mount, as well as (1) hole on the outside and (1) hole on the inside of the frame for the rear middle mount.



*****Double check all hardware is installed correctly and tight*****

*****Re-torque ALL bolts after 100 miles*****



190 S McQueen Rd
Ste 109 Gilbert, AZ 85233
Phone: 480-633-2929 | Fax: 480-633-1791
www.sdhqoffroad.com

Follow us on:



Facebook



Instagram

For questions or help with the installation, please call SDHQ Offroad @ 480-633-2929
Mon.–Fri. 8:00am–5:30pm and Sat. 8:00am–3:30pm Arizona Time. www.sdhqoffroad.com