



SDHQ Motorsports
190 S McQueen Rd
Ste 109 Gilbert, AZ 85233
Phone: 480-633-2929

Product Packing List

Product: **SDHQ-54-1330-G5**

Description: **2003+ Toyota 4Runner & 2003-09 Lexus GX 470 & 2010+ Lexus GX 460 Body Mount Chop**

| | |
|-------------------------------------|--------------------------|
| _____ (1) Driver Side Chop Plate | SDHQ-54-1330-G5-A |
| _____ (1) Passenger Side Chop Plate | SDHQ-54-1330-G5-B |
| _____ (1) SDHQ Cut Template | SDHQ-54-1330-G5-C |

Inspected and Packaged by: _____ **Date:** _____



SDHQ Motorsports
190 S McQueen Rd
Ste 109 Gilbert, AZ 85233
Phone: 480-633-2929

INSTALLATION INSTRUCTIONS

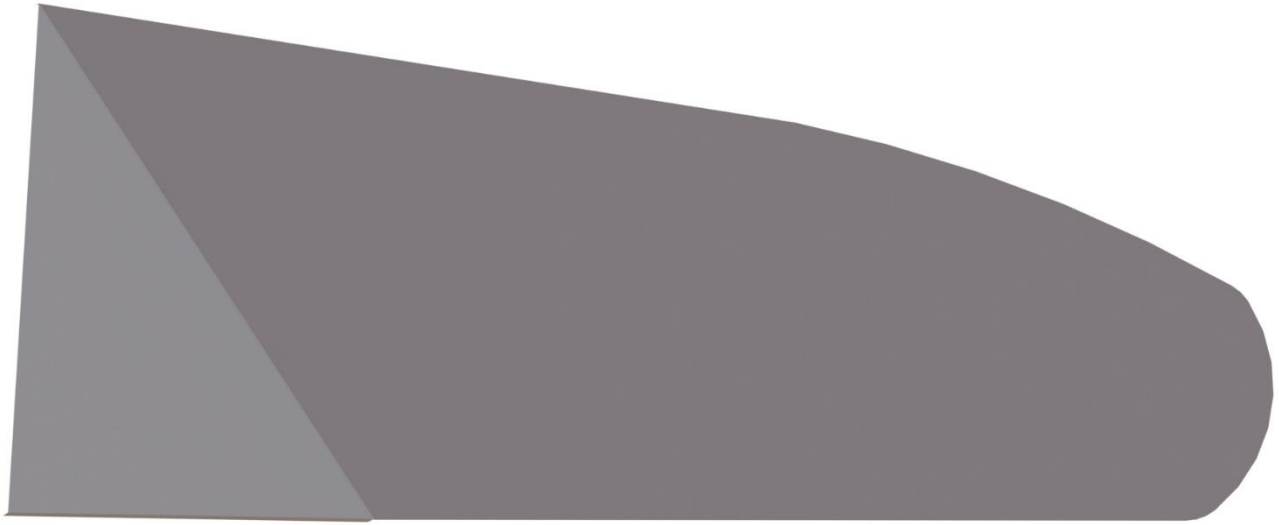
Product: SDHQ-54-1330-G5

Description: 2003+ Toyota 4Runner & 2003-09 Lexus GX 470 & 2010+ Lexus GX 460 Body Mount Chop



| Parts List | Hardware List | Required Tools |
|--|----------------------|---|
| (1) Driver Side SDHQ-54-1330-G5-A (1) Passenger Side SDHQ-54-1330-G5-B (1) SDHQ Cut template SDHQ-54-1330-G5-C | N/A | 10mm socket Welder Cut Off Wheel Sawzall Sawzall metal blade Box Cutters Flathead Screwdriver |
| Tech Notes | | |
| Use Safety Glasses and gloves when cutting the body mount. Fits 2003-09 Lexus GX 470 and 2010+ GX 460. Be cautious of any wiring when cutting the body mount. **Approx. Install Time: 2 Hours** | | |

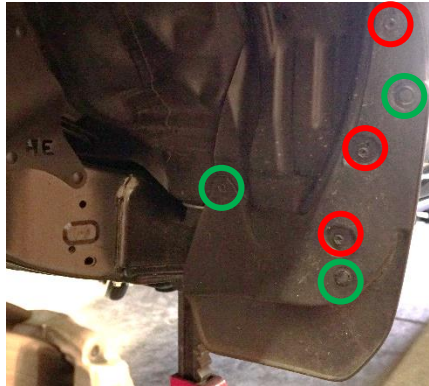
For questions or help with the installation, please call SDHQ Offroad @ 480-633-2929
Mon.-Fri. 8:00am-5:30pm and Sat. 8:00am-3:30pm Arizona Time. www.sdhqoffroad.com



*****READ ALL INSTRUCTIONS THOROUGHLY FROM START TO FINISH BEFORE BEGINNING INSTALLATION! *****

Installation Instructions:

1. Unbox all of your parts and familiarize yourself with them.
2. **Preparing your 4-Runner.** Chock the rear wheels, jack the front of your vehicle off the ground and place it on jack stands. Remove the front wheels to easily access the body mount. Remove the (3) Bolts circled in red with a 10mm socket and (3) snap-in clips circled in green with a flathead screwdriver. Once the hardware is removed, remove the mud flap.



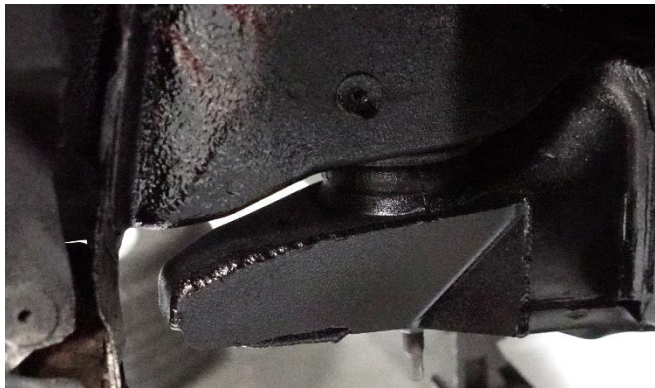
3. Reinsert the (3) bolts from step 2 back into the fender. Using a box cutter, cut along the red line shown below to remove excess plastic on the inner fender liner. Clean off the body mount and the surrounding area so everything is easily visible.



- 4. Cutting the mounts.** Place the body mount template against the body mount and outline. Use the hole as a guide, as shown below left. Outline along the template following the red line shown below. **Be sure to follow the red line exactly.** Use a Sawzall and the metal blade to cut the flat parts of the body mount. Use a cut off wheel to finish cutting the body mount and cleaning up the metal. Some excess material may be cut off of the bottom body mount washer if the body mount chop plate hits the washer as shown on the far right picture.



- 5. Installing the chop plate.** Verify fitment of the body mount plate. If the plate sits flush against the chopped body mount, tack weld in place. If it does not, cut what needs to be trimmed and then tack weld once flush. If there are gaps due to over-cutting, fill in with weld. Once the placement is verified, weld the mount into place. Paint over any bare metal once complete to prevent any rust.



- 6.** Repeat steps 2-5 on the passenger side.
- 7. Enjoy your SDHQ Body Mount Chops!**

Double check all hardware is installed correctly and tight

Re-torque ALL bolts after 100 miles



190 S McQueen Rd
Ste 109 Gilbert, AZ 85233
Phone: 480-633-2929 | Fax: 480-633-1791
www.sdhqoffroad.com

Follow us on:



Facebook



Instagram

For questions or help with the installation, please call SDHQ Offroad @ 480-633-2929
Mon.–Fri. 8:00am–5:30pm and Sat. 8:00am–3:30pm Arizona Time. www.sdhqoffroad.com