



**SDHQ Motorsports**  
**190 S McQueen Rd**  
**Ste 109 Gilbert, AZ 85233**  
**Phone: 480-633-2929**

---

## Product Packing List

**Product:** SDHQ-54-1203-G5

**Description:** 2014+ 4Runner Upper 20" Behind the Grille Light Mount

_____ (1) Driver Side Mount	SDHQ-54-1203-G5-A
_____ (1) Passenger Side Mount	SDHQ-54-1203-G5-B
_____ (1) Hardware Package	SDHQ-54-1203-G5-C
_____ (2) 5/16" - 18 x 1" S.S. Button Head Bolts	
_____ (4) 5/16" S.S. Flat Washers	
_____ (2) 5/16" - 18 Lock Nuts	

**Inspected and Packaged By:** \_\_\_\_\_ **Date:** \_\_\_\_\_

For questions or help with the installation, please call SDHQ Offroad @ 480-633-2929  
Mon.-Fri. 8:00am-5:30pm and Sat. 8:00am-3:30pm Arizona Time. [www.sdhqoffroad.com](http://www.sdhqoffroad.com)



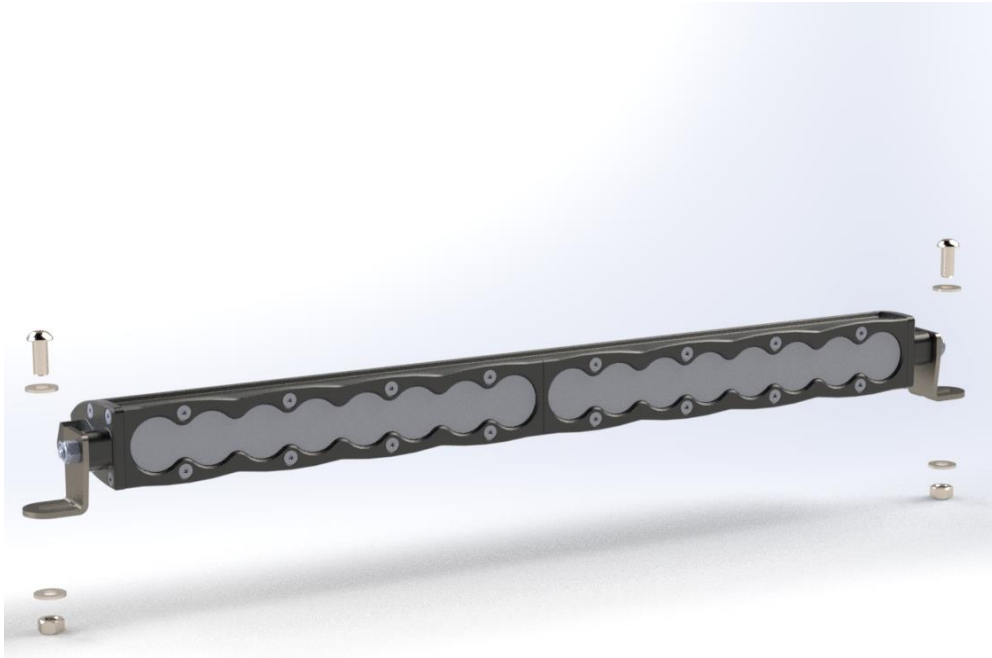


SDHQ Motorsports  
 190 S McQueen Rd  
 Ste 109 Gilbert, AZ 85233  
 Phone: 480-633-2929

## INSTALLATION INSTRUCTIONS

**Product:** SDHQ-54-1203-G5

**Description:** 2014+ 4-Runner Upper 20" Behind the Grille Mount



<b>Parts List</b>	<b>Hardware List</b>	<b>Required Tools</b>
(1) Driver Side Mount SDHQ-54-1203-G5-A (1) Passenger Side Mount SDHQ-54-1203-G5-B (1) Hardware Package SDHQ-54-1203-G5-C	(2) 5/16 - 18 x 1" S.S. button Head Bolts (4) 5/16" S.S. Flat Washers (2) 5/16-18 Nylock S.S. Nuts	SAE Allen Wrench Set 1/2" Socket (1/4" drive preferred) 10mm Socket (1/4" drive preferred) Ratchet (1/4" drive preferred) Small Flat Head Screw Driver/ or panel removal tools

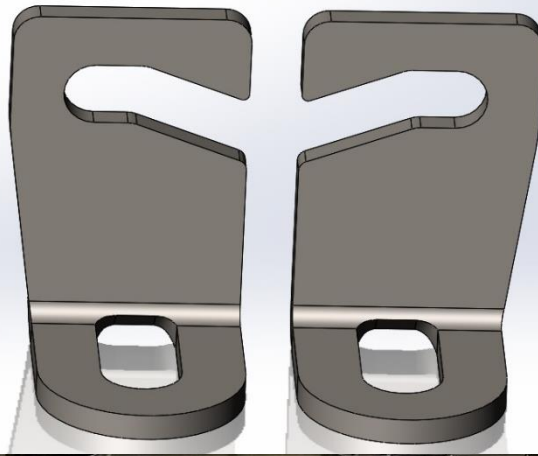
### **Tech Notes**

Specifically designed to mount a 20" Baja Designs S8 Light bar behind the top portion of the 4-Runner Grille.  
 Slotted for ease of installation.

Minor adjustment may be needed to ensure proper panel gap between hood and grille.

For questions or help with the installation, please call SDHQ Offroad @ 480-633-2929  
 Mon.-Fri. 8:00am-5:30pm and Sat. 8:00am-3:30pm Arizona Time. [www.sdhqoffroad.com](http://www.sdhqoffroad.com)

Driver Side



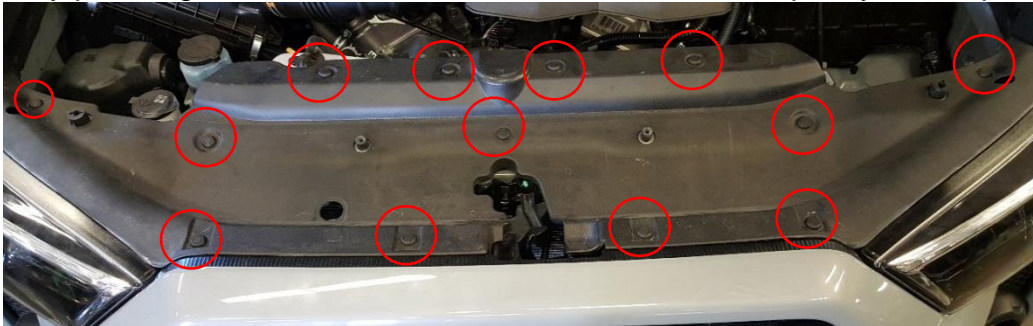
Passenger Side



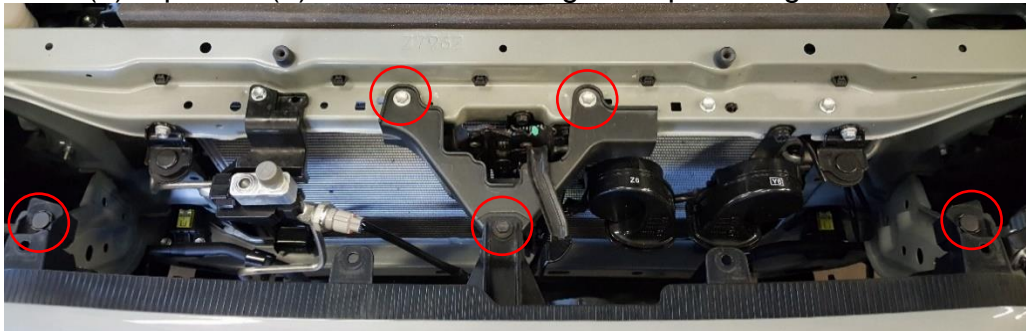
\*\*\*READ ALL INSTRUCTIONS THOROUGHLY FROM START TO FINISH BEFORE BEGINNING INSTALLATION! \*\*\*

## Installation Instructions:

1. **Gaining access behind the grille.** Starting with the plastic cover on top. Remove all of the plastic clips by pressing the center button. This will release the clip so you can pull it out.



2. Then remove the (2) clips and (3) 10mm bolt holding the top of the grille.



For questions or help with the installation, please call SDHQ Offroad @ 480-633-2929  
Mon.–Fri. 8:00am–5:30pm and Sat. 8:00am–3:30pm Arizona Time. [www.sdhqoffroad.com](http://www.sdhqoffroad.com)

3. Finally, remove the (2) outer clips holding the upper section of the back of the grille on.



4. **Installing the mounts and light bar.** Utilizing the holes you just removed the body clips from, Insert the provided 5/16" button head screws with washers through the provided brackets into the holes in the grill support and install washers and lock nuts on the underside of the grille support. Tighten down screws just enough to lightly hold in place but still allow adjustment in the slot.

5. Install the light bar by angling it in and down from the driver side under the center grill support tab in order to position it into place behind the upper grill section. Then slide the bar forward into the slots of the provided brackets, roughly position as desired and tighten light bar nuts just enough to hold in place but still allow for adjustment.

6. Now is the time to center the light bar and brackets in the grille. Gently pull out (towards the front) on the grille assembly, then tighten down the 5/16" hardware. Aim your light bar as desired and tighten down the side mount nuts. Insert the 3 10mm bolts by hand that you removed from Step 2, then while gently pulling the top of the grille assembly forward tighten the 3 bolts. This process will ensure that the panel gap from the hood to the grill assembly is consistent.



7. Wire your lights accordingly.

8. Reinstall remaining panels in reverse order that they were removed.



For questions or help with the installation, please call SDHQ Offroad @ 480-633-2929  
Mon.–Fri. 8:00am–5:30pm and Sat. 8:00am–3:30pm Arizona Time. [www.sdhqoffroad.com](http://www.sdhqoffroad.com)

**\*\*\*Double check all hardware is installed correctly and tight\*\*\***

**\*\*\*Re-torque ALL bolts after 100 miles\*\*\***



190 S McQueen Rd  
Ste 109 Gilbert, AZ 85233  
Phone: 480-633-2929 | Fax: 480-633-1791  
[www.sdhqoffroad.com](http://www.sdhqoffroad.com)

Follow us on:



Facebook



Instagram

For questions or help with the installation, please call SDHQ Offroad @ 480-633-2929  
Mon.–Fri. 8:00am–5:30pm and Sat. 8:00am–3:30pm Arizona Time. [www.sdhqoffroad.com](http://www.sdhqoffroad.com)