



SDHQ Motorsports
190 S McQueen Rd
Ste 109 Gilbert, AZ 85233
Phone: 480-633-2929

Product Packing List

Product: *SDHQ-54-1202-G5*

Description: 2014+ 4Runner Lower 30" Behind Grille Light Mount

_____ (1) Driver Side Mount	SDHQ-54-1202-G5-A
_____ (1) Passenger Side Mount	SDHQ-54-1202-G5-B
_____ (6) Spacers	SDHQ-54-1202-G5-C
_____ (1) Hardware Package	SDHQ-54-1202-G5-D
_____ (4) 3/8" - 16 x 1 3/4" Grade 8 Bolts	
_____ (4) 3/8" Flat Washers	
_____ (2) 1/4" - 20 x 1 1/2" Grade 8 Bolts	
_____ (6) 1/4" Grade 8 Flat Washers	

Inspected Packaged By: _____ **Date:** _____

For questions or help with the installation, please call SDHQ Offroad @ 480-633-2929
Mon.-Fri. 8:00am-5:30pm and Sat. 8:00am-3:30pm Arizona Time. www.sdhqoffroad.com

**For questions or help with the installation, please call SDHQ Offroad @ 480-633-2929
Mon.–Fri. 8:00am–5:30pm and Sat. 8:00am–3:30pm Arizona Time. www.sdhqoffroad.com**

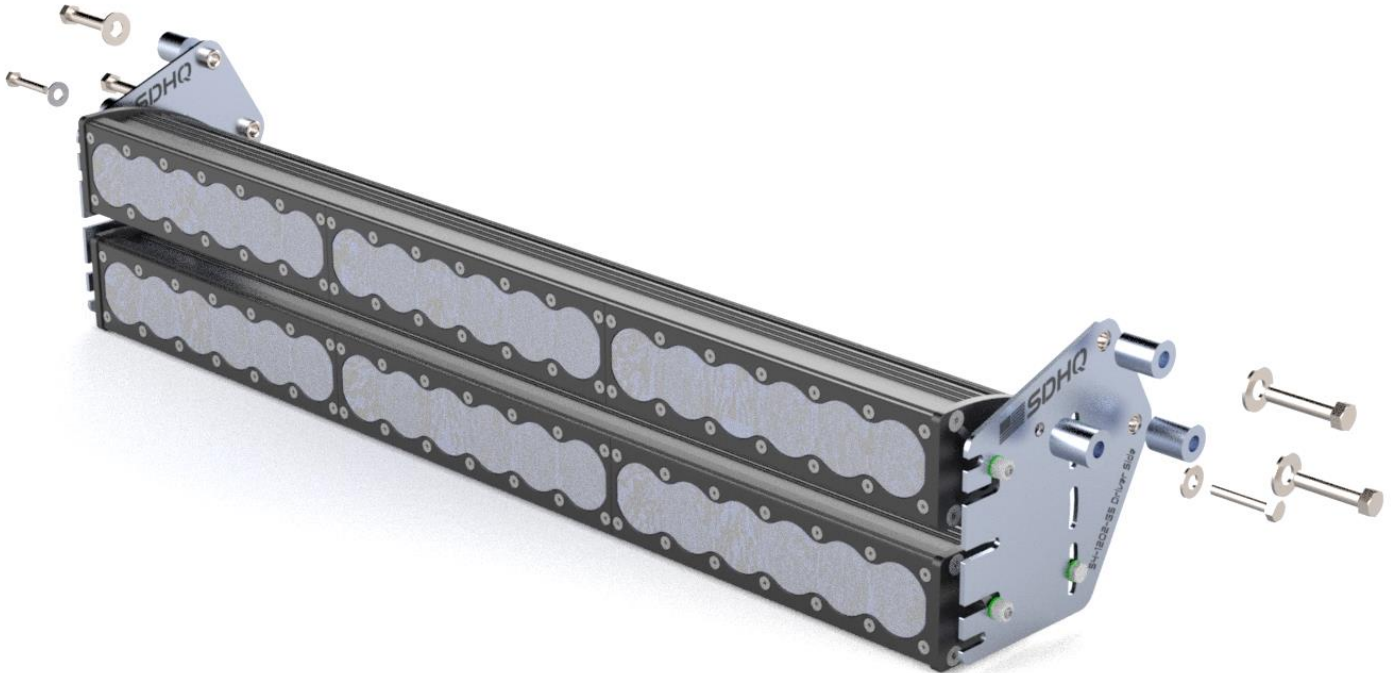


SDHQ Motorsports
 190 S McQueen Rd
 Ste 109 Gilbert, AZ 85233
 Phone: 480-633-2929

INSTALLATION INSTRUCTIONS

Product: *SDHQ-54-1202-G5 Lower 30 BTG*

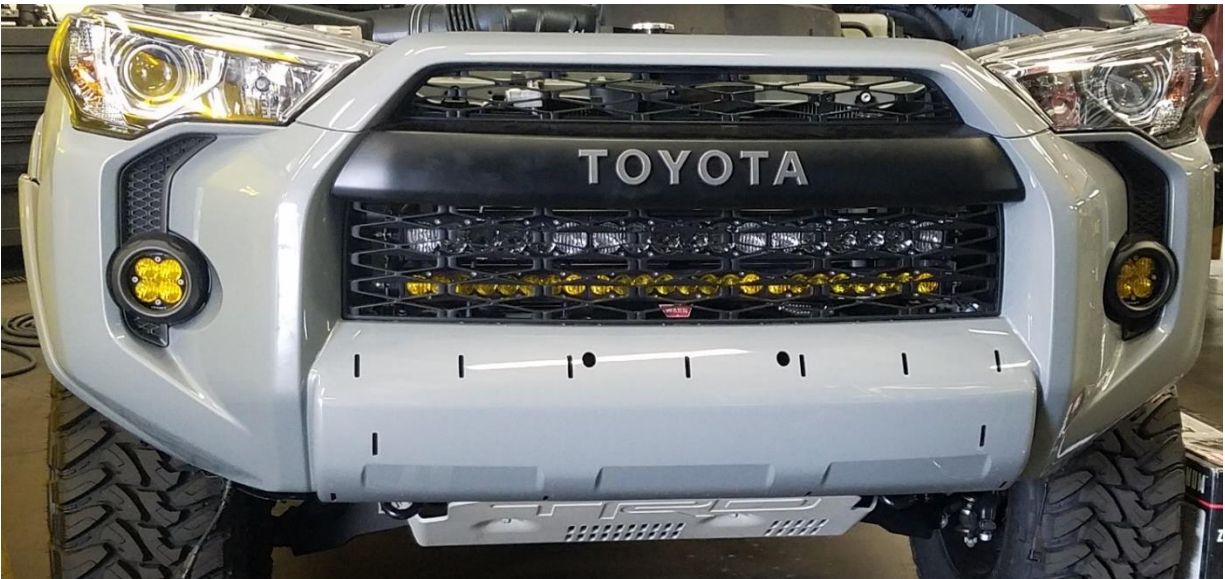
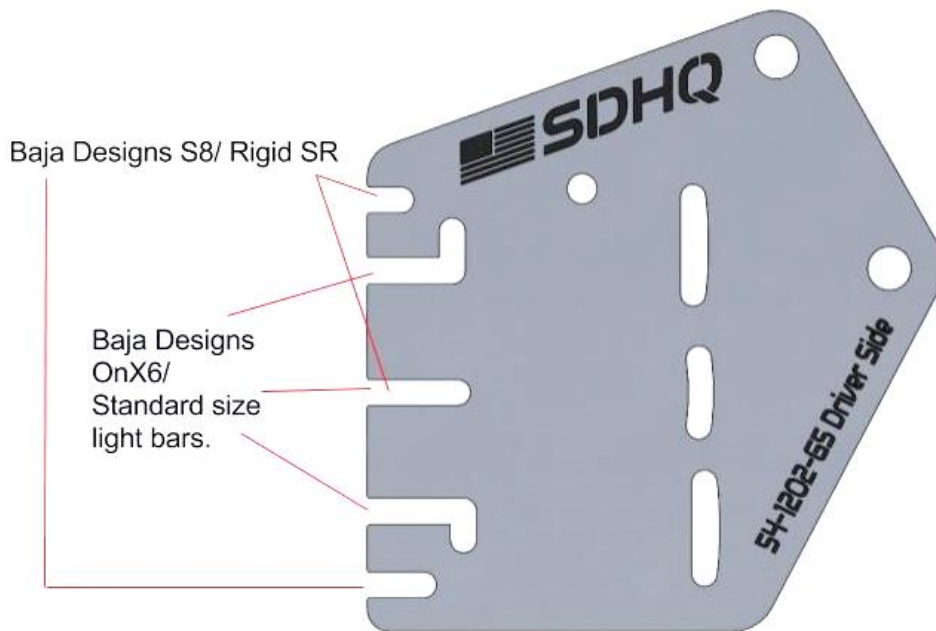
Description: 2014+ 4-Runner Lower 30" Behind the Grille Light Mount



<u>Parts List</u>	<u>Hardware List</u>	<u>Required Tools</u>
(1) Driver Side Mount SDHQ-54-1202-G5-A (1) Passenger Side Mount SDHQ-54-1202-G5-B (6) Spacers SDHQ-54-1202-G5-C (1) Hardware Package SDHQ-54-1202-G5-D	(4) 3/8-16 x 1 3/4" Grade 8 Bolts (4) 3/8" Flat Washers (2) 1/4 - 20 x 1 1/2" Grade 8 Bolts (6) 1/4" Grade 8 Flat Washers	Flathead screwdrivers or panel removal tools 9/16" Wrench/ socket 7/16" Wrench/ socket 10mm socket/wrench

Tech Notes

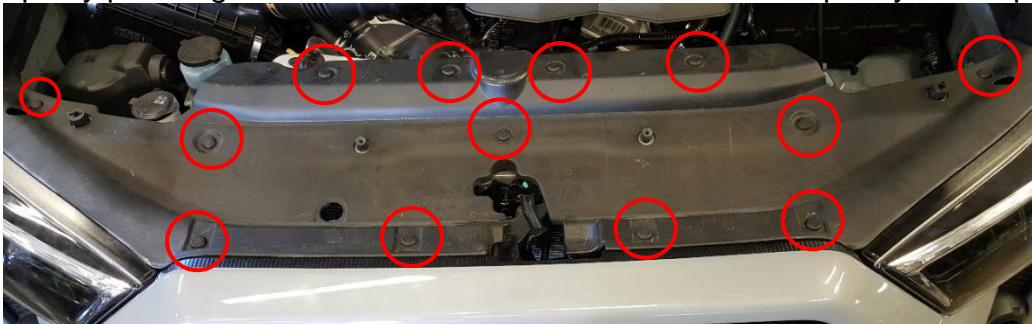
- Fits 2014+ 4-Runner (Limited models can only use the top light mount option)
- Baja Design
 - 30" S8 (top, middle, bottom - Can fit 3 at once without winch mount)
 - 30" OnX6 (top, middle, bottom - Can fit 2 top and Bottom without winch mount)



*****READ ALL INSTRUCTIONS THOROUGHLY FROM START TO FINISH BEFORE BEGINNING INSTALLATION! *****

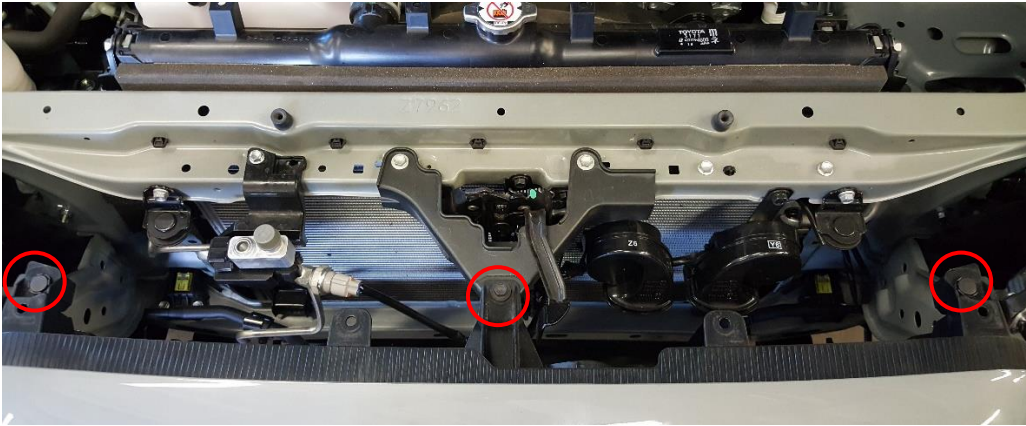
Installation Instructions:

1. Removing the factory front bumper. The grille and bumper are attached and will come out as one piece. Remove the factory grille and bumper by starting with the plastic cover on top. Remove all of the plastic clips by pressing the center button. This will release the clip so you can pull it out.



For questions or help with the installation, please call SDHQ Offroad @ 480-633-2929
 Mon.–Fri. 8:00am–5:30pm and Sat. 8:00am–3:30pm Arizona Time. www.sdhqoffroad.com

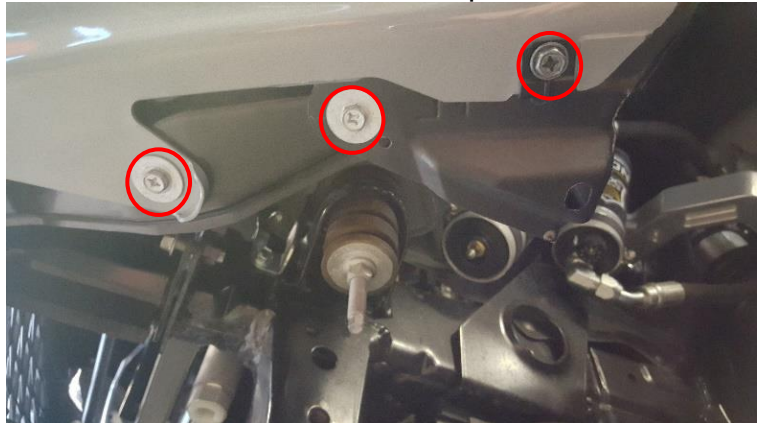
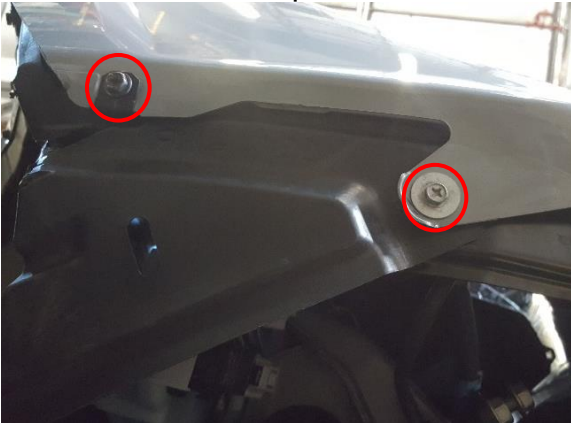
2. Then remove the (2) clips and (1) 10mm bolt holding the top of the grille.



3. Finally, remove the (4) clips holding the upper section of the back of the grille on.



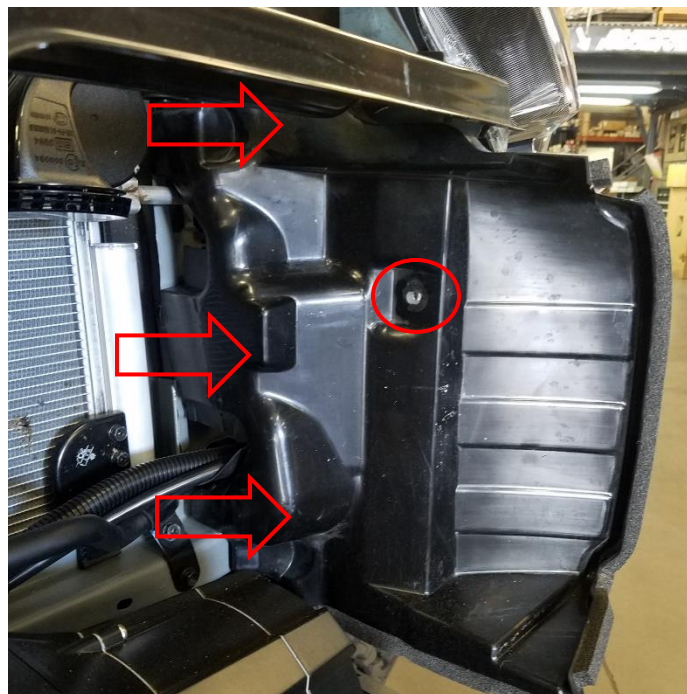
4. Unplug your factory fog lamps. Remove the 10mm bolts holding the front of your inner fenders to the bottom of the bumper, and the lower center section of the bottom of the bumper.



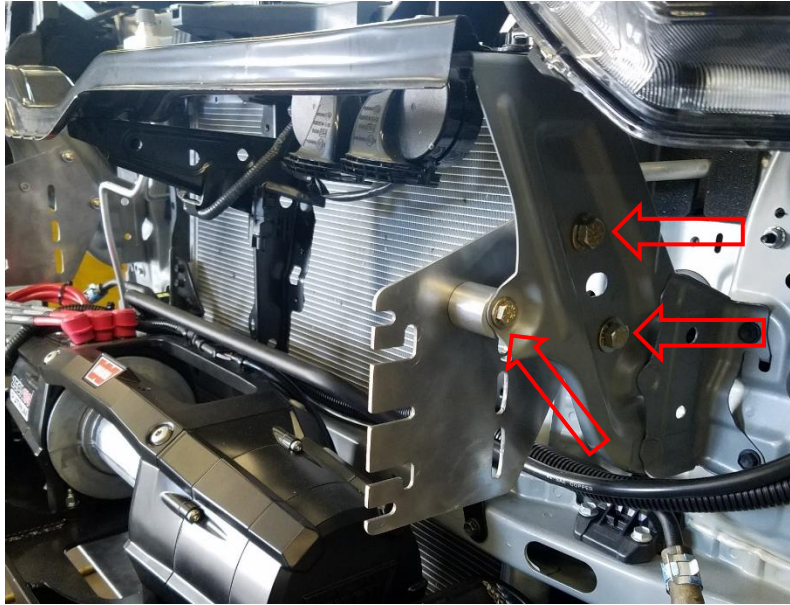
5. Next remove the (3) 10mm bolts on each side of the bumper that connect to the inner fenders. The top rear corner of the bumper where it meets the fender needs to be pulled straight out away from the fender, which will require prying it over the plastic threads. Then gently pull the outer section of the bumper forward, it is clipped in under the fender and light. The entire front bumper and grill assembly should come off.



6. Remove plastic side air deflectors and set aside, each side is held in by a single body clip through the side and clipped into the radiator support. After removing the body clip, a good tug will unclip the deflector from the radiator support. These will not be going back on.



7. Loosely install hardware through driver side grill support bracket, spacers, and into the driver side mounting bracket. Note that the ¼" bolt goes towards the front of the truck. Repeat on passenger side.



8. Install light bar(s) in desired mounting slots and tighten hardware until the light is held in place, but still allows for final aiming adjustment. Note: If using 2 different light bars check width dimensions and space accordingly. The Baja Designs OnX6 is slightly narrower than the S8, extra ¼" washers have been provided in the kit to space the OnX6 when mounting with a S8. If only running an OnX6 spacers are not needed.

9. Aim your light(s) to desired adjustment and tighten all hardware.

10. Wire lights according to light manufacturer's recommendations and install front bumper cover in the reverse order that it was removed.



*****Double check all hardware is installed correctly and tight*****

*****Re-torque ALL bolts after 100 miles*****



190 S McQueen Rd
Ste 109 Gilbert, AZ 85233
Phone: 480-633-2929 | Fax: 480-633-1791
www.sdhqoffroad.com

Follow us on:



Facebook



Instagram

For questions or help with the installation, please call SDHQ Offroad @ 480-633-2929
Mon.–Fri. 8:00am–5:30pm and Sat. 8:00am–3:30pm Arizona Time. www.sdhqoffroad.com