



SDHQ Motorsports  
190 S McQueen Rd  
Ste 109 Gilbert, AZ 85233  
[www.SDHQoffroad.com](http://www.SDHQoffroad.com)

---

## Product Packing List

**Product:** SDHQ-54-1130/1131/1132-G5

**Description:** 2010-current Toyota 4Runner Switch Pros  
SP-9100 Keypad OEM Panel Mount

\_\_\_\_\_ (1) SDHQ Laser Cut Factory Toyota Panel

- Black Panel
- Grey Panel
- Beige Panel

SDHQ-54-1130-G5-A

SDHQ-54-1131-G5

SDHQ-54-1132-G5

\_\_\_\_\_ (1) SDHQ 3D Printed Backing Reinforcements

\_\_\_\_\_ (1) Driver Side Backer

SDHQ-54-1130-G5-B

\_\_\_\_\_ (1) Passenger Side Backer

SDHQ-54-1130-G5-C

Inspected and Packaged By: \_\_\_\_\_ Date: \_\_\_\_\_

For questions or help with the installation, please email [help@sdhqoffroad.com](mailto:help@sdhqoffroad.com)  
Store front hours: Mon. – Fri. 8:00am – 5:30pm and Sat. 9:00am – 2:00pm Arizona Time.





SDHQ Motorsports  
 190 S McQueen Rd  
 Ste 109 Gilbert, AZ 85233  
[www.SDHQoffroad.com](http://www.SDHQoffroad.com)

## INSTALLATION INSTRUCTIONS

**Product:** SDHQ-54-1130/1131/1132-G5

**Description:** 2010-current Toyota 4Runner Switch Pros SP-9100 Keypad OEM Panel Mount



<u>Parts List</u>	<u>Hardware List</u>	<u>Required Tools</u>
(1) SDHQ Laser Cut Panel SDHQ-54-1130-G5-A or SDHQ-54-1131-G5 or SDHQ-54-1132-G5 (1) SDHQ Driver Side Backer SDHQ-54-1130-G5-B (1) SDHQ Passenger Side Backer SDHQ-54-1130-G5-C	N/A	8mm Deep Socket Plastic cutting tool Medium Strength Thread Locker

### Tech Notes

A ratchet is not needed. If a ratchet is used, the Switch Pro Keypad inserts could be stripped. Some cutting is required.  
 Utilizes Switch Pros supplied hardware for mounting to OEM Panel.  
**Approx. install time = 30 minutes (not including wiring time)**

**\*\*\*READ ALL INSTRUCTIONS THOROUGHLY FROM START TO FINISH BEFORE BEGINNING INSTALLATION! \*\*\***

For questions or help with the installation, please email [help@sdhqoffroad.com](mailto:help@sdhqoffroad.com)  
 Store front hours: Mon. – Fri. 8:00am – 5:30pm and Sat. 9:00am – 2:00pm Arizona Time.



## **Installation Instructions:**

- 1. Remove the factory panel.** Start on the door side of the panel and move the weather stripping along the panel. The factory panel can be pulled towards the rear of the vehicle. Once the door side of the panel is free, grab between the steering wheel and panel and pull towards the rear of the vehicle.



- 2. Disconnect the all switches and fully remove the panel.** The switches will need to be removed as well. The switches have clips holding them to the panel and will be pushed through the face of the panel.

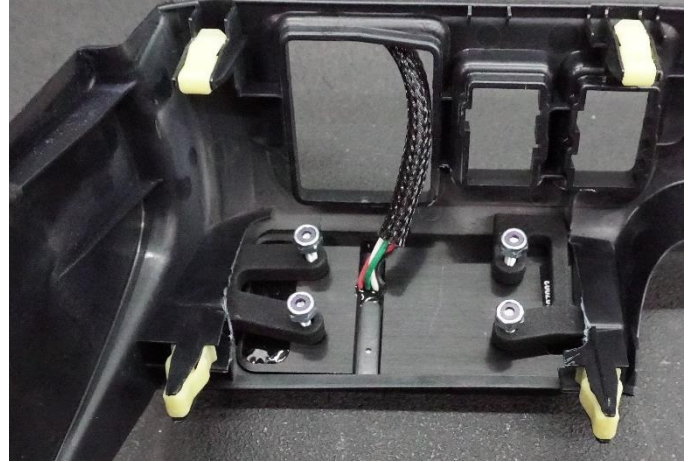
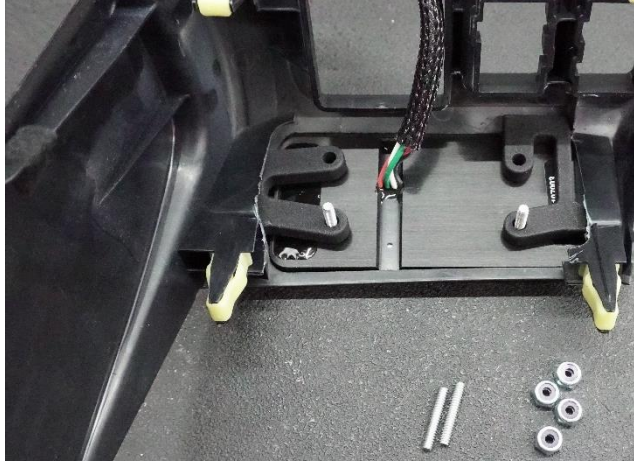
- 3. Installing Keypad.** Place the Switch Pro Keypad in the new SDHQ cut panel. Place the panel and Keypad down on a safe surface, Keypad down. Now place the 3D printed backers on the back of the Switch Pro Keypad.



For questions or help with the installation, please email [help@sdhqoffroad.com](mailto:help@sdhqoffroad.com)  
 Store front hours: Mon. – Fri. 8:00am – 5:30pm and Sat. 9:00am – 2:00pm Arizona Time.

4. Locate the (4) studs supplied with your keypad and apply thread locker to one end. Insert stud end (with thread locker) through the holes of the backer mounts and screw them into the Keypad. Thread the Switch Pros supplied ny-lock nuts on to the studs and tighten by hand with the 8mm socket. A ratchet is not needed. The Keypad threads are shallow and can be easily stripped if a ratchet is used. Tighten until the 3D printed backers are flush with the Keypad and there is resistance on the nuts.

**Note:** The raised section on the 3D Printed Backers will face towards the Switch Pros Keypad



5. **Installing the Panel.** Circled in red below is some plastic that needs to be removed before installing the Switch Pro and panel back into the vehicle.

6. Place the switches that were removed from the factory panel into the new SDHQ cut panel. Connect those to their correct harnesses. Wire and connect the Switch Pro Keypad. Install the panel and weather stripping.



For questions or help with the installation, please email [help@sdhqoffroad.com](mailto:help@sdhqoffroad.com)  
Store front hours: Mon. – Fri. 8:00am – 5:30pm and Sat. 9:00am – 2:00pm Arizona Time.

**\*\*\*Double check all hardware is installed correctly and tight\*\*\***

**\*\*\*Re-torque ALL bolts after 100 miles\*\*\***



190 S McQueen Rd  
Ste 109 Gilbert, AZ 85233  
[www.sdhqoffroad.com](http://www.sdhqoffroad.com)

Follow us on:



Facebook



Instagram

For questions or help with the installation, please email [help@sdhqoffroad.com](mailto:help@sdhqoffroad.com)  
Store front hours: Mon. – Fri. 8:00am – 5:30pm and Sat. 9:00am – 2:00pm Arizona Time.