



SDHQ Motorsports
190 S McQueen Rd
Ste 109 Gilbert, AZ 85233
www.SDHQoffroad.com

Product Packing List

Product: SDHQ-54-1103-G5

Description: 2010+ Toyota 4Runner/Lexus GX 460 ARB
Compressor Mount

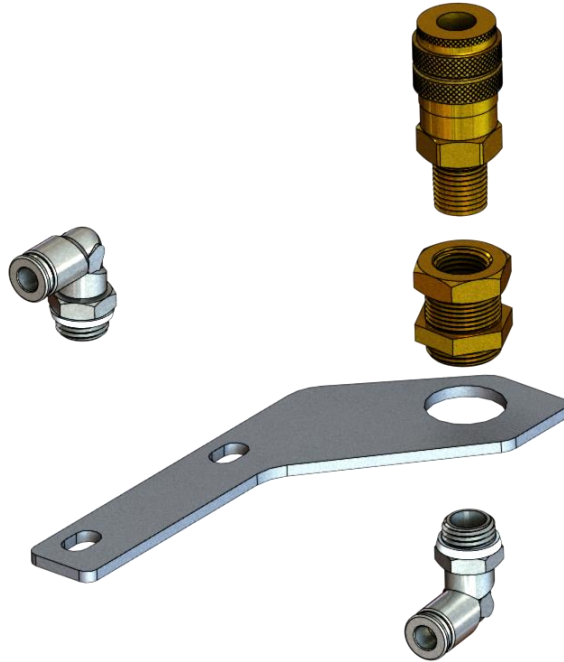
_____ (1) Main Compressor Mount	SDHQ-54-1103-G5-A
_____ (1) Upright Support Bracket	SDHQ-54-1103-G5-B
_____ (1) Inner Fender Support Bracket	SDHQ-54-1103-G5-C
_____ (1) Inner Fender Support Doubler	SDHQ-54-1103-G5-D
_____ (1) Hardware Package	SDHQ-54-1103-G5-HP
_____ (2) M6 - 1.0 x 25mm S.S. Serrated Flange Head Bolts	
_____ (2) M6 - 1.0 S.S. Serrated Flange Nuts	
_____ (1) 5/16"-18 x 1 1/4" S.S. Hex Head Bolt	
_____ (2) 5/16"-18 x 3/4" S.S. Flat Head Screw	
_____ (3) 5/16" S.S. Washer	
_____ (3) 5/16"-18 No-Slip Clip-On Barrel Nut	
_____ (2) M8 - 1.25 x 20mm Class 10.9 Hex Head Bolt	
_____ (1) Edge Clip Zip Tie 8"	
_____ (1) Tube of Blue Loctite	
_____ (2) 8 Gauge 1/4" Eyelet	
_____ (2) 3/8" Heat Shrink, 1" Length	

Inspected and Packaged By: _____ Date: _____

For questions or help with the installation, please email help@sdhqoffroad.com
Store front hours: Mon. - Fri. 8:00am - 5:30pm and Sat. 9:00am - 2:00pm Arizona Time.

Add On Accessories For SDHQ-54-1103-G5

2010+ Toyota 4Runner Air Chuck Switch Mount
SDHQ-54-1103-G5-ACM:



(1) SDHQ-54-1103-G5-ACM (Air Chuck Mount)

(1) Hardware Pack

(1) Quick Disconnect Hose Coupler

(1) Brass Through Wall Coupler

(2) 1/4" OD Push to Connect Tube Fitting

(1) Hose Coupler Dust Cap

(1) 15" of 1/4" Air Hose

(2) 1/4" Push-to-Connect Security Clips



SDHQ Motorsports
 190 S McQueen Rd
 Ste 109 Gilbert, AZ 85233
www.SDHQoffroad.com

INSTALLATION INSTRUCTIONS

Product: SDHQ-54-1103-G5

Description: 2010+ Toyota 4Runner/ Lexus GX 460 ARB Compressor Mount



<u>Parts List</u>	<u>Hardware List</u>	<u>Required Tools</u>
(1) Main Compressor Mount SDHQ-54-1103-G5-A (1) Upright Support Bracket SDHQ-54-1103-G5-B (1) Inner Fender Support Bracket SDHQ-54-1103-G5-C (1) Inner Fender Support Doubler SDHQ-54-1103-G5-D (1) Hardware Package SDHQ-54-1103-G5-HP	(2) M6 - 1.0 x 25mm S.S. Serrated Flange Bolt (2) M6 - 1.0 S.S. Serrated Flange Nut (1) 5/16"-18 x 1 1/4" S.S. Hex Head Bolt (2) 5/16"-18 x 3/4" 18-8 S.S. Flat Head Screw (3) 5/16" S.S. Washer (3) 5/16"-18 No-Slip Clip-On Barrel Nut (2) M8 - 1.25 x 20mm Class 10.9 Hex Head Bolt (1) Edge Clip Zip Tie 8" (1) Tube of Blue Loctite (2) 8 Gauge 1/4" Eyelet (2) 3/8" Heat Shrink, 1" Length	10mm Socket/Wrench 13mm Socket/Wrench 1/2" Socket/Wrench 3/16" Allen Key Metal Cutting Pliers Flathead Screwdriver

Tech Notes

Use Blue Loctite on all mounting hardware.
 Fits single or twin ARB Compressors.

Read all ARB Compressor instructions before beginning installation.

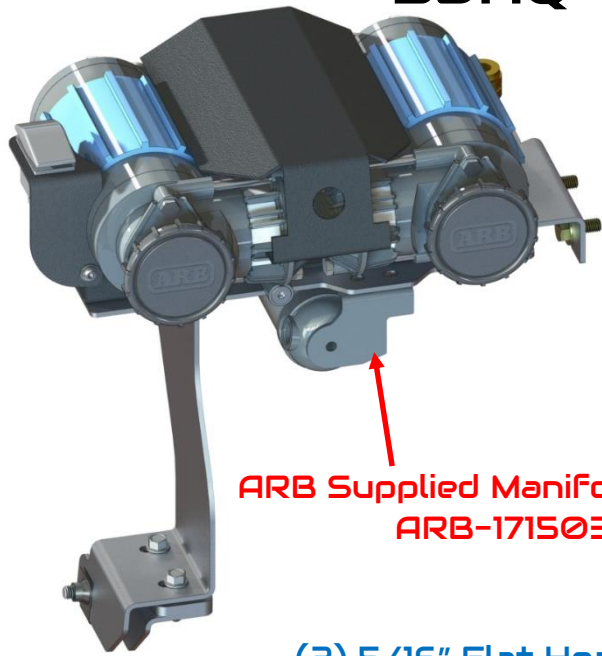
Approx. Install Time: 1 1/2 Hours (not including wiring or plumbing)

Add On Kits: SDHQ-00-1103-SM (ARB Switch Mount) & 54-1103-G5-ACM (4Runner Mount Specific Air Chuck Mount)

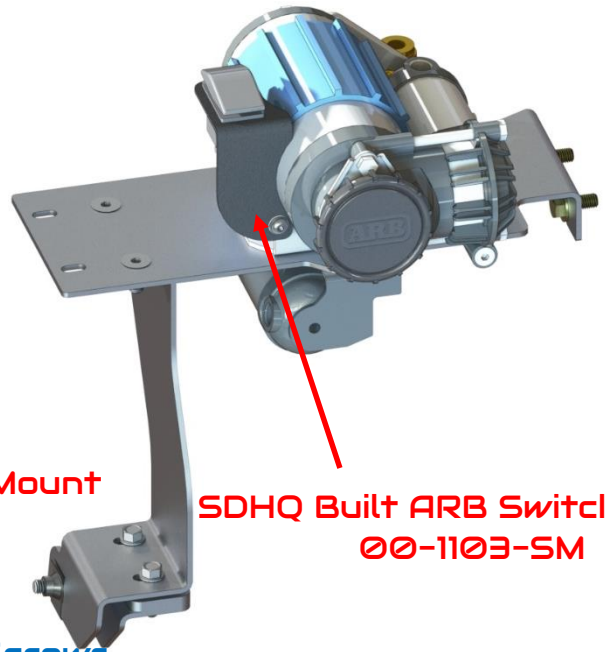
*****READ ALL INSTRUCTIONS THOROUGHLY FROM START TO FINISH BEFORE BEGINNING INSTALLATION!*****

For questions or help with the installation, please email help@sdhqoffroad.com
 Store front hours: Mon. – Fri. 8:00am – 5:30pm and Sat. 9:00am – 2:00pm Arizona Time.

SDHQ-54-1103-G5



ARB Supplied Manifold Mount
ARB-171503



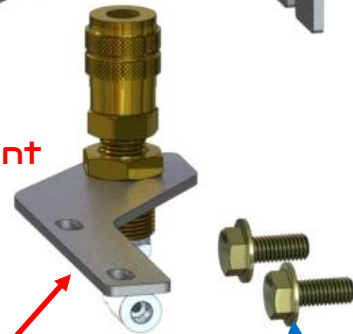
SDHQ Built ARB Switch Mount
00-1103-SM

(2) 5/16" Flat Head Screws



Main Compressor Mount
54-1103-G5

(2) 5/16" Clip on Nut



(2) M8 Hex Head Bolts
& 5/16" SS Washers

(2) M6 Flange Head Bolt
& Flange Nut

Air Chuck Mount
54-1103-G5-ACM

Upright Support Bracket
54-1103-G5-B

5/16" Hex Bolt, Washer
& Clip on Nut

Inner Fender Support Doubler
54-1103-G5-D

Inner Fender Support Bracket
54-1103-G5-C

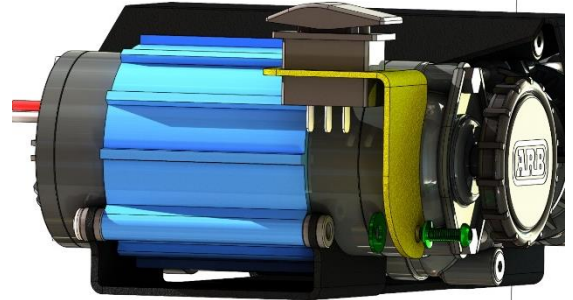
For questions or help with the installation, please email help@sdhqoffroad.com
Store front hours: Mon. – Fri. 8:00am – 5:30pm and Sat. 9:00am – 2:00pm Arizona Time.

Installation Instructions:

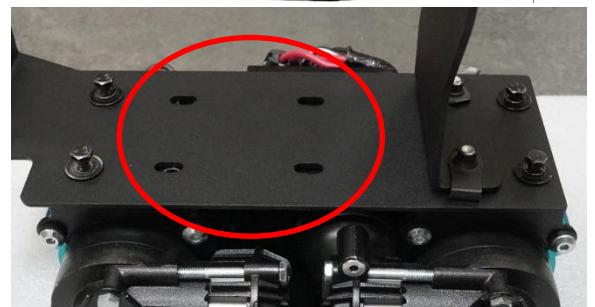
1. Unbox your SDHQ Built Compressor Mount and ARB Compressor making sure all parts are present. Familiarize yourself with the parts and how they assemble as shown on page 4.
2. **Assembling the Mount:** Begin by placing the (3) 5/16" Clip-On Nuts onto the Upright Support Bracket as shown below, left. Then attach the Main Compressor Mount to the Upright Support Bracket, threading the (2) 5/16" flat head screws in the (2) countersunk holes. Apply blue Loctite and tighten completely, the flat head screw will not be accessible once the compressor is installed. Install your ARB Manifold now if applicable as shown using ARB hardware.



3. **Installing ARB Compressor Switch Mount*:** Remove the M5 bolt securing the compressor body to the frame. Place the 1/4" S.S. Washer, Switch Mount Bracket, M5 Lock Washer and M5 x 18mm S.S. Bolt, as shown right. ***If Purchased***

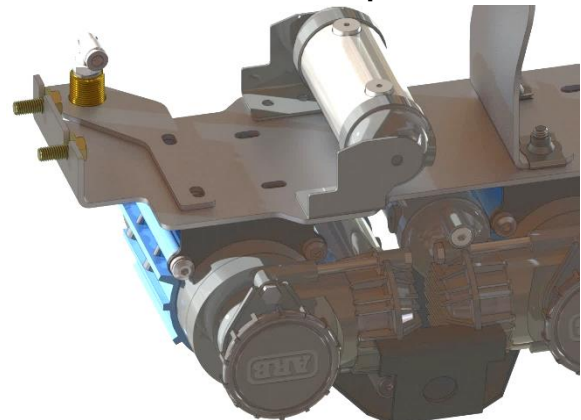
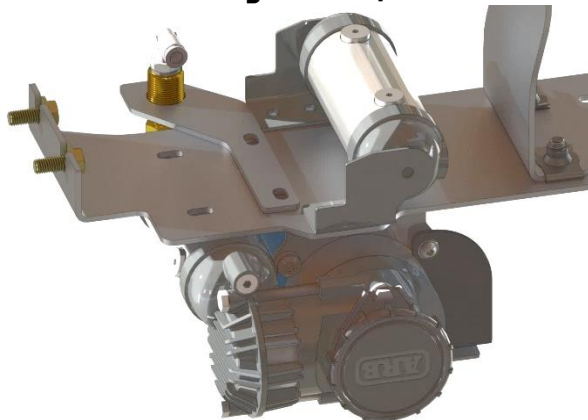


4. **Mounting the Air Chuck* and ARB Compressor:** Next place your ARB compressor upside down and align the compressor mount on top, as shown right. Place the Air Chuck Bracket as shown below. Using the hardware supplied with your compressor and some blue Loctite, bolt down the compressor/Air Chuck Bracket to the mount. If mounting a single compressor, the (4) holes in red will be used for mounting. ***If Purchased***



ARB Single Compressor

ARB Twin Compressor

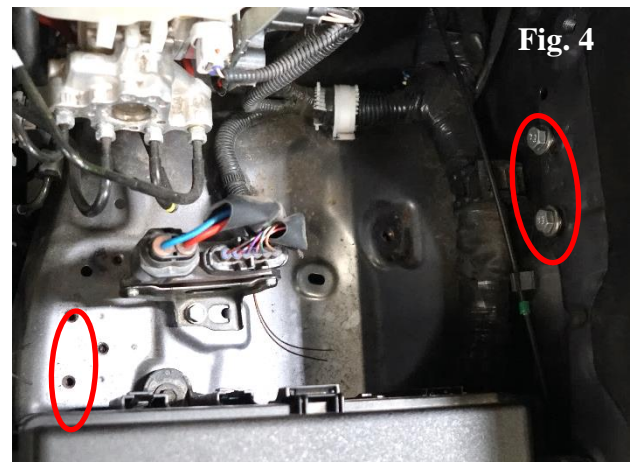
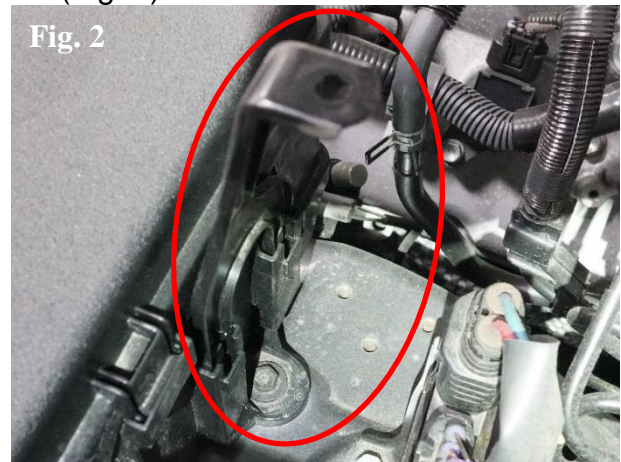
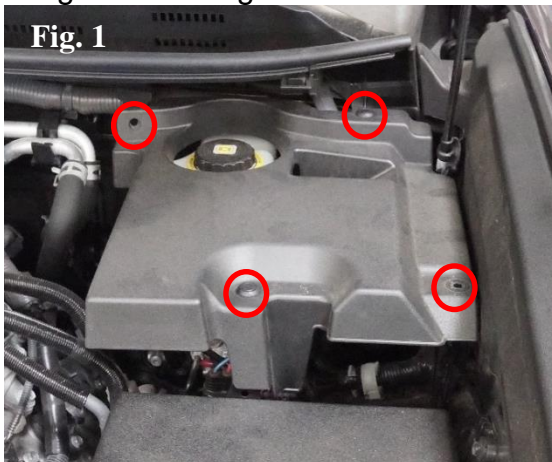


For questions or help with the installation, please email help@sdhqoffroad.com
Store front hours: Mon. – Fri. 8:00am – 5:30pm and Sat. 9:00am – 2:00pm Arizona Time.

5. **Preparing for Installation (4Runner):** Use the supplied M6 Bolts to clear the (2) mounting holes in the driver side fender from rubber sealer by threading them through without the mount in place, circled below left. Loosely thread in the supplied M8 Hex Head Bolts and 5/16" S.S. washers, leaving 1/4" of threads to slide the mount onto. For 2020+ 4Runner's with the larger relay & fuse box, the mounting bracket has a metal clip that needs to be trimmed to fit the M8 mounting bolt and washer. Remove the (2) 12mm bolts securing the fuse box and trim the clip out of the threaded hole using metal cutting pliers. (Proceed to Step 7 for mount install.)



6. **Preparing for Installation (GX 460):** Remove the plastic cover on the driver side of the engine bay by popping the (4) plastic clips securing it (Fig. 1). Once removed, pull off the front support bracket from the relay & fuse box by pulling the tabs and pulling up (Fig. 2). Then remove the (2) 12mm bolts holding down the side bracket (Fig. 3). Thread in the supplied M8 Hex Head bolts and 5/16" S.S. washers into the threaded hole from the side bracket and threaded hole to the rear of it, leaving 1/4" of threads to slide the mount onto (Fig. 4). Using a supplied M6 Bolt, clear the (2) mounting holes in the driver side fender from rubber sealer by threading them through without the mount in place (Fig. 4).

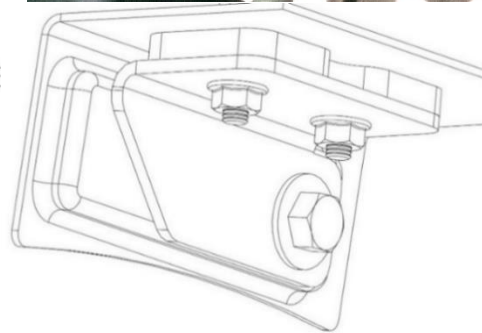
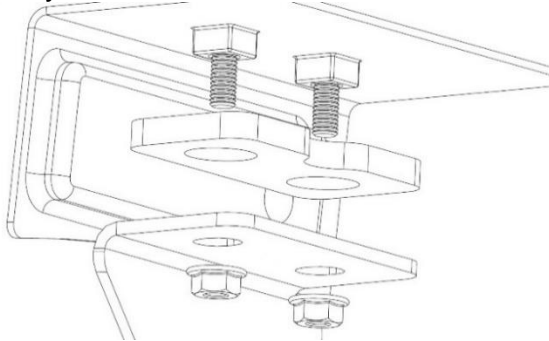
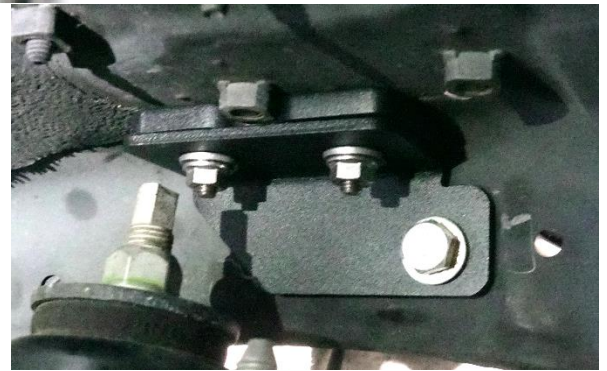


For questions or help with the installation, please email help@sdhqoffroad.com
 Store front hours: Mon. – Fri. 8:00am – 5:30pm and Sat. 9:00am – 2:00pm Arizona Time.

7. **Installing the Mount:** Place the mount into the engine bay, sliding it onto the (2) M8 Hex Head bolts as shown. Align the Upright Support Bracket with the (2) mounting holes and thread in the supplied M6 Flange bolts. Tighten the M8 Bolts, but leave the M6 bolts loose for now.



8. Under the driver side wheel well, you will find the (2) M6 bolts that will be protruding through the fender. Place the Inner Support Doubler and Bracket over the (2) bolts and secure using (2) M6 Flange Head Nuts as shown below. Then, thread the 5/16" Hex Head Bolt and 5/16" washer through the Inner Support Bracket into the Clip-On nut attached to the Upright Support. Tighten down the hardware, starting with the 5/16" bolt, then the M6 bolts followed by M6 nuts.



9. Adjust the front vacuum hose so it is out of the way of the compressor mount. Using the edge clip zip tie, attach the rear vacuum hose to the side of the compressor mount to prevent rubbing (**4Runner only, shown below**). Follow ARB wiring instructions to properly wire and plumb your air compressor. Use the supplied (2) 8 gauge eyelets and heat shrink on the ARB harness to connect to battery ground and power.

10. Enjoy your new SDHQ Built ARB Compressor Mount!

4Runner



GX 460



For questions or help with the installation, please email help@sdhqoffroad.com
 Store front hours: Mon. – Fri. 8:00am – 5:30pm and Sat. 9:00am – 2:00pm Arizona Time.

*****Double check all hardware is installed correctly and tight*****

*****Re-torque ALL bolts after 100 miles*****



190 S McQueen Rd
Ste 109 Gilbert, AZ 85233
www.sdhqoffroad.com

Follow us on:



Facebook



Instagram

For questions or help with the installation, please email help@sdhqoffroad.com
Store front hours: Mon. – Fri. 8:00am – 5:30pm and Sat. 9:00am – 2:00pm Arizona Time.