



**SDHQ Motorsports**  
**190 S McQueen Rd**  
**Ste 109 Gilbert, AZ 85233**  
**Phone: 480-633-2929**

---

## **Product Packing List**

**Product:** **SDHQ-53-9204-G3**

**Description:** **2007-2021 Tundra and 2008-2021**  
**Sequoia/Land Cruiser Power Steering Reservoir**

_____ (1) SDHQ Power Steering Reservoir Cap	SDHQ-00-9201-U1-A
_____ (1) SDHQ Power Steering Reservoir Body	SDHQ-00-9201-U1-B
_____ (1) SDHQ Power Steering Reservoir Mount	SDHQ-53-9202-G3
_____ (1) SDHQ Power Steering Reservoir Filter	SDHQ-00-9204-U1
_____ (1) Hardware Package	SDHQ-53-9201-G3-A
_____ (1) Quart of Power Steering Fluid	
_____ (1) 15" Power Steering Hose with 90° Fitting	
_____ (1) 14" Power Steering Hose	
_____ (1) 10" Power Steering Hose	

**Inspected, Packaged and Shipped By:** \_\_\_\_\_ **Date:** \_\_\_\_\_

For questions or help with the installation, please call SDHQ Offroad @ 480-633-2929  
Mon.-Fri. 8:00am-5:30pm and Sat. 8:00am-3:30pm Arizona Time. [www.sdhqoffroad.com](http://www.sdhqoffroad.com)



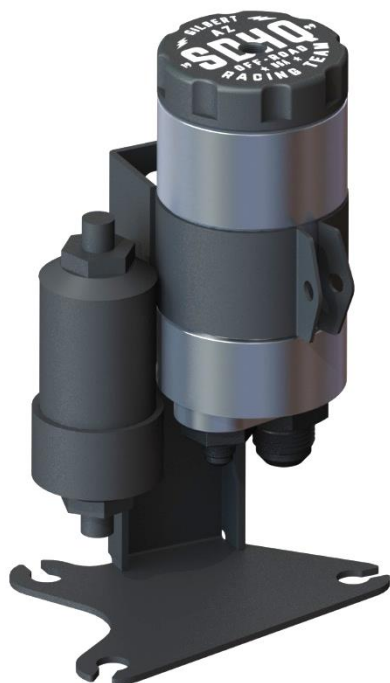


**SDHQ Motorsports**  
190 S McQueen Rd  
Ste 109 Gilbert, AZ 85233  
Phone: 480-633-2929

## INSTALLATION INSTRUCTIONS

**Product:** SDHQ-53-9204-G3

**Description:** 2007-2021 Tundra and 2008-2021  
Sequoia/Land Cruiser Power Steering Reservoir



<u>Parts List</u>	<u>Hardware List</u>	<u>Required Tools</u>
<ul style="list-style-type: none"><li>(1) SDHQ Power Steering Cap SDHQ-00-9201-U1-A</li><li>(1) SDHQ Power Steering Body SDHQ-00-9201-U1-B</li><li>(1) SDHQ Power Steering Mount SDHQ-53-9202-G3</li><li>(1) SDHQ Power Steering Filter SDHQ-00-9204-U1</li><li>(1) Hardware Package SDHQ-53-9201-G3-A</li></ul>	<ul style="list-style-type: none"><li>(1) Quart of Power Steering Fluid</li><li>(1) 15" Power Steering Hose with<ul style="list-style-type: none"><li>(1) 90° Fitting</li></ul></li><li>(1) 14" Power Steering Hose</li><li>(1) 10" Power Steering Hose</li></ul>	<ul style="list-style-type: none"><li>Hand Pump Siphon</li><li>Oil Catch Container</li><li>Shop Rags</li><li>10mm socket</li><li>Ratchet</li><li>6" Extension</li><li>Pliers</li><li>#6 AN Wrench (11/16")</li></ul>
<u>Tech Notes</u>		
<p>Exercise extreme caution when working on a vehicle's power steering system. Fluids can be hot and/or pressurized. Check the reservoir fluid levels at operating temperatures after 25 – 50 miles of driving. For Tundra/Sequoia's, the 10" Power Steering Hose needs to be cut down to 8". For Land Cruiser's, the 14" Power Steering Hose needs to be cut down to 9 ½". #6 AN Wrench is highly recommended for install, an 11/16" wrench would work also. <b>Approx. Install Time: 2 ½ Hours</b></p>		

For questions or help with the installation, please call SDHQ Offroad @ 480-633-2929  
Mon.–Fri. 8:00am–5:30pm and Sat. 8:00am–3:30pm Arizona Time. [www.sdhqoffroad.com](http://www.sdhqoffroad.com)

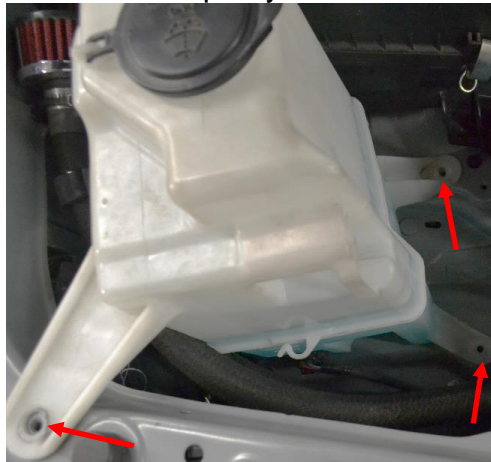


Hoses with factory clamps installed.

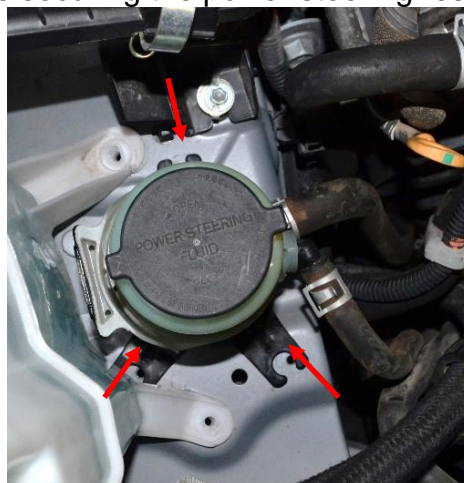
**\*\*\*READ ALL INSTRUCTIONS THOROUGHLY FROM START TO FINISH BEFORE BEGINNING INSTALLATION! \*\*\***

## **Installation Instructions:**

1. Unbox all parts and verify all parts are accounted for. Familiarize yourself with the parts.
2. **Preparing your truck.** Locate the power steering reservoir on the front passenger side of your engine bay. Remove the power steering reservoir cap and remove all of the power steering fluid out of the reservoir. Land Cruiser owners can skip to Step 4.
3. Remove the (3) 10mm bolts securing the windshield reservoir to the top of the fender well. Disconnect (2) electrical connectors from the windshield reservoir. The windshield wiper reservoir can be moved on top of your air filter box. Be cautious not to knock it over.



4. Remove the (3) 10mm bolts securing the power steering reservoir to the top of the fender well.

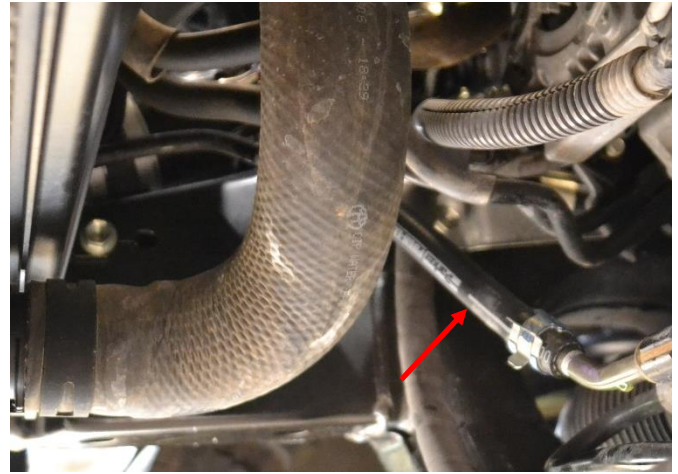


For questions or help with the installation, please call SDHQ Offroad @ 480-633-2929  
Mon.-Fri. 8:00am-5:30pm and Sat. 8:00am-3:30pm Arizona Time. [www.sdhqoffroad.com](http://www.sdhqoffroad.com)



**5. Installing new Power Steering Hoses.**

There are (3) factory power steering hoses that will be replaced. For Tundra/Sequoia's, the 10" Power Steering Hose will need to be cut down to 8". Remove the skid plate to access (2) of the lines. Start on the passenger side and locate the hose shown to the right. Move the hose clamps off of the hard lines. With your catch container ready, remove the power steering hose. Remove the (2) clamps on the old power steering line and place them on the 8" power steering line. Lube the ends of the new power steering line with power steering fluid and install it. Place the clamps back over the hard lines to secure the hose.



- 6.** Locate the second power steering hose that will be removed on the driver side as shown to the right. Move the hose clamp off the hard line. With your catch container ready, remove this end of the power steering hose. Follow this hose up and back to the steering rack. Move the hose clamp off the hard line and remove the hose from the truck. For Land Cruiser's, the 14" Power Steering Hose will need to be cut down to 9 1/2". Install the new 14" power steering hose with clamps. The third hose will be removed in Step 8.



- 7. Removing the factory power steering reservoir.** Take note of the orientation of the power steering hoses. The larger diameter hose will be installed on the new power steering reservoir in the same orientation. The smaller hose (in red) will be removed and replaced with the third power steering hose. Move the hose clamps down the power steering hoses. Remove the hoses from the reservoir. Remove the power steering reservoir from the truck.



- 8.** Following the third power steering hose down towards the cooler. Move the hose clamp off the hard line. Remove the power steering hose. Install the new 15" power steering hose with 90° fitting and clamp.



**9. Installing the Power Steering Reservoir.** Remove the metal spacer and rubber isolators from the power steering mount. Install the metal spacers and rubber isolators onto the SDHQ Power Steering Mount. Install the mount into the factory position and tighten the (3) 10mm bolts.

**10.** Connect the power steering hoses to the SDHQ Power Steering Reservoir. The larger diameter factory hose will slip onto the AN fitting on the bottom of the power steering reservoir. Place the hose clamp over the fitting. The power steering hose that was replaced with the 15" power steering hose with 90° fitting will connect to the bottom of the filter if purchased. If it was not purchased, it will go directly to the reservoir.



**11.** Install the windshield reservoir, clip the (2) electrical connectors and tighten the (3) 10mm bolts.

**12.** Using the supplied power steering fluid, fill up the power steering reservoir to the internal fill line (machined ridge). With the power steering cap off, start your vehicle for (2) seconds and then turn off. Refill the reservoir. Repeat one more time. Start your vehicle and cycle the steering 3 – 5 times to get the air out of the lines and check for leaks. Refill the reservoir. Clean up any spilt fluid.

**13.** Take your truck out for a drive to get it up to operating temperatures and to finish removing the air out of the power steering lines. Refill the reservoir if needed. The fluid should be at the fill line at operating temperature. Check the reservoir after 50 miles. Enjoy your new SDHQ Power Steering Reservoir!

**\*\*\*Double check all hardware is installed correctly and tight\*\*\***

**\*\*\*Re-torque ALL bolts after 100 miles\*\*\***



190 S McQueen Rd  
Ste 109 Gilbert, AZ 85233  
Phone: 480-633-2929 | Fax: 480-633-1791  
[www.sdhqoffroad.com](http://www.sdhqoffroad.com)

Follow us on:



Facebook



Instagram

For questions or help with the installation, please call SDHQ Offroad @ 480-633-2929  
Mon.–Fri. 8:00am–5:30pm and Sat. 8:00am–3:30pm Arizona Time. [www.sdhqoffroad.com](http://www.sdhqoffroad.com)