



SDHQ Motorsports
190 S McQueen Rd
Ste 109 Gilbert, AZ 85233
Phone: 480-633-2929

Product Packing List

Product: *SDHQ-53-9201-G3*

Description: '07-'21 Tundra, '08-'22 Sequoia and '08-'21 Land Cruiser/LX 570 Billet Power Steering Reservoir

- | | | |
|-------|---|-------------------|
| _____ | (1) Universal Billet Power Steering Reservoir | SDHQ-00-9201-U1 |
| _____ | (1) SDHQ Power Steering Mount | SDHQ-53-9202-G3 |
| _____ | (1) Hardware Package | SDHQ-53-9201-G3-A |
| _____ | (1) Quart of Power Steering Fluid | |
| _____ | (1) 15" Power Steering Hose with 90° Fitting | |
| _____ | (1) 14" Power Steering Hose | |
| _____ | (1) 10" Power Steering Hose | |
| _____ | (1) 5/16" - 16 x 1 ¼" Grade 8 Hex Head Bolt | |
| _____ | (2) 5/16" Grade 8 Washers | |
| _____ | (1) 5/16" - 18 Grade 8 Locknut | |
| _____ | (1) -10 ORB to AN-10 Flare Fitting | |
| _____ | (1) AN-10 Push Lok 90° Fitting | |

Inspected and Packaged By: _____ **Date:** _____

For questions or help with the installation, please call SDHQ Offroad @ 480-633-2929
Mon.-Fri. 8:00am-5:30pm and Sat. 8:00am-3:30pm Arizona Time. www.sdhqoffroad.com

Included in **SDHQ-00-9201-U1**:

- (1) SDHQ Power Steering Reservoir Cap
- (1) SDHQ Power Steering Reservoir Body
- (1) Hardware Package
 - (1) AN-6 Anti-Cavitation Fitting
 - (1) SDHQ 3D Printed Baffle

SDHQ-00-9201-U1-A
SDHQ-00-9201-U1-B
SDHQ-00-9201-U1-C

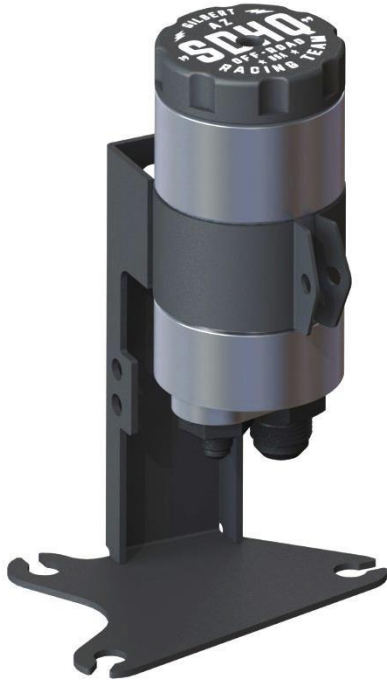


SDHQ Motorsports
 190 S McQueen Rd
 Ste 109 Gilbert, AZ 85233
 Phone: 480-633-2929

INSTALLATION INSTRUCTIONS

Product: SDHQ-53-9201-G3

Description: '07-'21 Tundra, '08-'21 Sequoia and '08-'21 Land Cruiser/LX 570 Power Steering Reservoir



<u>Parts List</u>	<u>Hardware List</u>	<u>Required Tools</u>
(1) Universal Power Steering Reservoir SDHQ-00-9201-U1 (1) SDHQ Power Steering Mount SDHQ-53-9202-G3 (1) Hardware Package SDHQ-53-9201-G3-A	(1) Quart of Power Steering Fluid (1) 15" Power Steering Hose with 90° Fitting (1) 14" Power Steering Hose (1) 10" Power Steering Hose (1) 5/16" – 18 x 1 1/4" Grade 8 Hex Head Bolt (2) 5/16" Grade 8 Washers (1) 5/16" – 18 Grade 8 Locknut (1) -10 ORB to AN-10 Flare Fitting (1) AN-10 Push Lok 90° Fitting	Hand Pump Siphon Oil Catch Container Shop Rags 10mm socket Ratchet 3", 6" Extension Pliers #6, #10 and #12 AN Wrenches or 11/16", 1" and 1 1/4" Wrenches

Tech Notes

Exercise extreme caution when working on a vehicle's power steering system. Fluids can be hot and/or pressurized. Check the reservoir fluid levels at operating temperatures after 25 – 50 miles of driving. For Tundra/Sequoia's, the 10" Power Steering Hose needs to be cut down to 8". [Compare to factory hose before cutting.](#) For Land Cruiser's, the 14" Power Steering Hose needs to be cut down to 9 1/2". [Compare to factory hose before cutting.](#) AN Wrenches are highly recommended for install, the equivalent standard wrenches would work also.

Approx. Install Time: 3 Hours

For questions or help with the installation, please call SDHQ Offroad @ 480-633-2929
 Mon.–Fri. 8:00am–5:30pm and Sat. 8:00am–3:30pm Arizona Time. www.sdhqoffroad.com

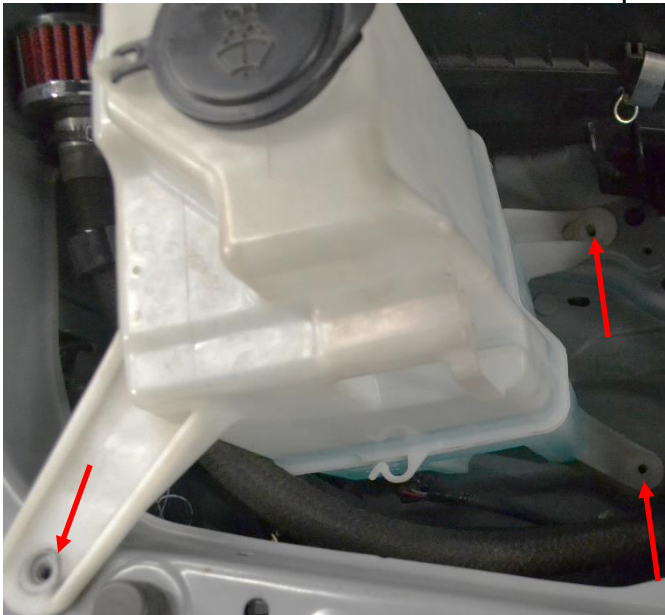


Hoses with factory clamps installed.

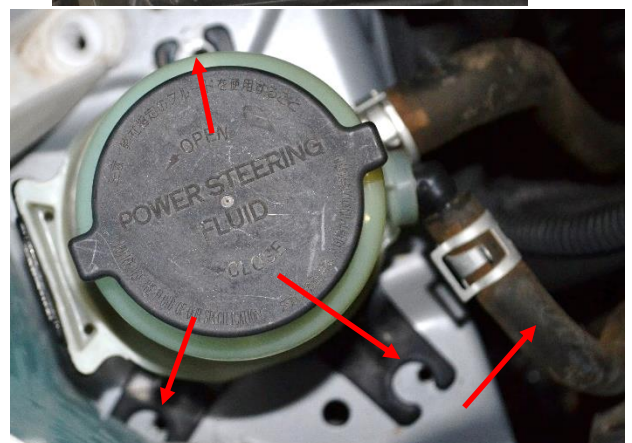
*****READ ALL INSTRUCTIONS THOROUGHLY FROM START TO FINISH BEFORE BEGINNING INSTALLATION! *****

Installation Instructions:

1. Unbox all parts and verify all parts are accounted for. Familiarize yourself with the parts.
2. **Preparing your vehicle.** Remove the (3) 10mm bolts securing the windshield reservoir to the top of the fender well. Disconnect the electrical connectors from the windshield reservoir. The windshield wiper reservoir can be moved on top of your air filter box. Be cautious not to knock it over. Land Cruiser/LX 570 owners can skip to Step 3.

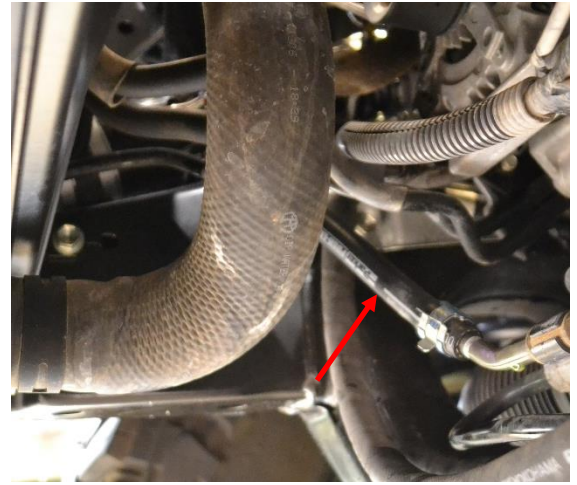


3. **Removing the factory power steering reservoir.** Remove the power steering reservoir cap and remove all of the power steering fluid. Take note of the orientation of the power steering hoses. The larger diameter hose will be installed on the new power steering reservoir in the same orientation. The smaller diameter hose will be removed and replaced with the 15" Power Steering Hose with 90° fitting in Step 12.

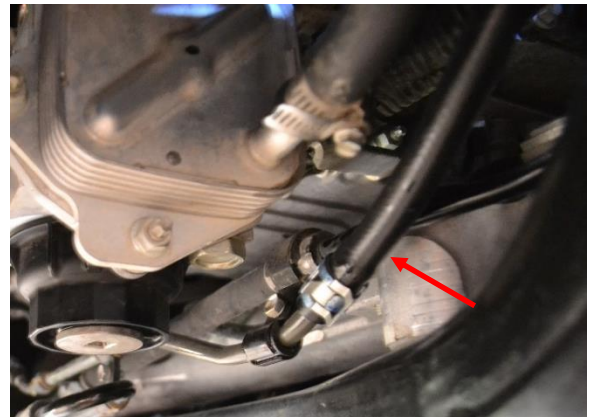


For questions or help with the installation, please call SDHQ Offroad @ 480-633-2929
Mon.–Fri. 8:00am–5:30pm and Sat. 8:00am–3:30pm Arizona Time. www.sdhqoffroad.com

4. **Installing new power steering hoses.** There are (3) factory power steering hoses that will be replaced. Remove the skid plate to access (2) of the lines. Start on the passenger side and locate the hose shown to the right. Move the hose clamps off of the hard lines. With your catch container ready, remove the power steering hose and allow the power steering fluid to drain. For Tundra/Sequoia's, the 10" power steering hose will need to be cut down to 8". Remove the (2) clamps on the old power steering hose and place them on the 10" (8") power steering hose. Lube the ends of the new power steering hose with power steering fluid and install it. Place the factory hose clamps back over the hard lines to secure the hose.



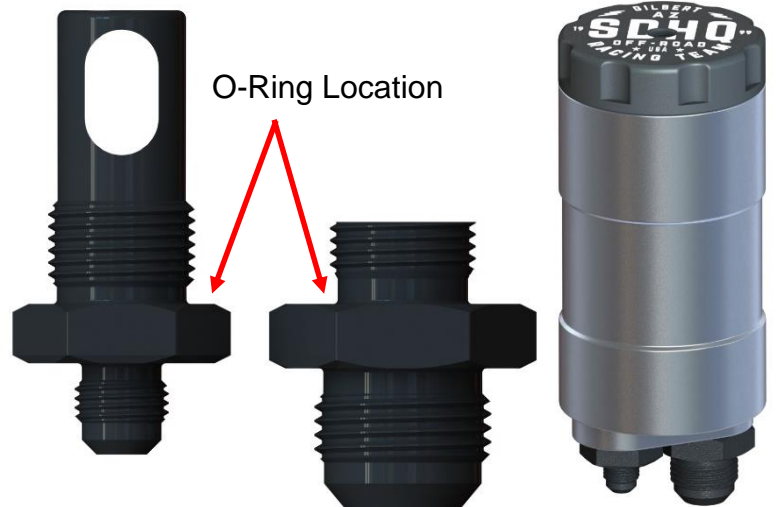
5. Locate the second power steering hose that will be removed on the driver side as shown right. Move the hose clamp off the hard line. With your catch container ready, remove this end of the power steering hose. Follow this hose up and back to the steering rack. Move the hose clamp off the hard line and remove the hose from the truck. For Land Cruiser's, the 14" Power Steering Hose will need to be cut down to 9 1/2". Install the new 14" (9 1/2") power steering hose with clamps. The third hose will be removed in Step 12.



6. **Assembling the SDHQ Power Steering Reservoir.** The SDHQ Power Steering Reservoir and fittings need to be assembled before installing into the mount. Locate the SDHQ 3D Printed Baffle, the Power Steering Cap and the Power Steering Body as pictured right. Verify the o-ring on the SDHQ Power Steering Body, Cap and baffle. Place the Baffle in the Body and tighten the Cap onto the body.



7. Locate the AN-6 Anti-Cavitation Fitting and the AN-10 Flare Fitting. Check for the O-rings on these fittings, arrowed in red to the right. Lube the threads of the AN-6 Anti-Cavitation Fitting with assembly lube. Thread this fitting into the left hole on the bottom of the Power Steering Reservoir here the SDHQ Logo is legible on the Cap. Lube the threads on the AN-10 Flare and thread this fitting into the other threaded hole. Tighten both fittings. See photos right.

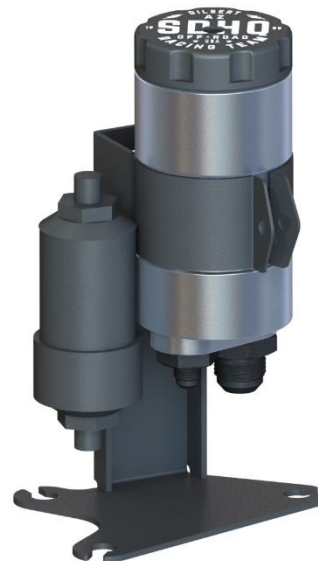
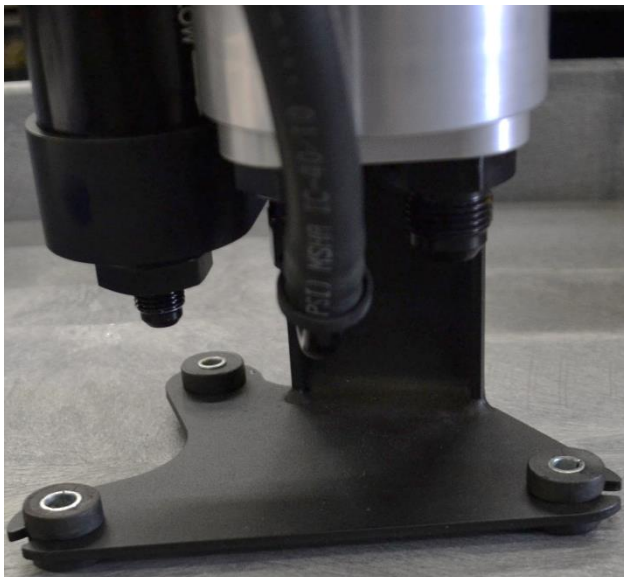


For questions or help with the installation, please call SDHQ Offroad @ 480-633-2929
 Mon.-Fri. 8:00am-5:30pm and Sat. 8:00am-3:30pm Arizona Time. www.sdhqoffroad.com

8. Install the SDHQ Power Steering Reservoir and Cap onto the Reservoir Mount. Secure the Reservoir using the 5/16" hardware.
9. Lube the bottom of the AN-6 Anti-Cavitation Fitting and AN-10 Fitting. Install the AN-10 Push Lok 90° Fitting onto the AN-10 Flare. Position this fitting as necessary for your vehicle.
10. If the optional Power Steering Filter (SDHQ-00-9204-U1) was purchased, begin those installation instructions now. Secure all fittings before installing into your vehicle.
11. Install the 15" Power Steering Hose with 90° Fitting to the AN-6 Anti-Cavitation Fitting or Power Steering Filter if applicable. Position this fitting as necessary for your vehicle. Secure all fittings before installing into your vehicle.
12. In your vehicle's engine bay, follow the smaller power steering hose from Step 5 down to the hard line near the frame. Move the hose clamp off the hard line. Remove the power steering hose. Remove the hose clamps from the factory hose and place one on the supplied 15" Power Steering Hose connected to the Power Steering Assembly.



13. Installing the Power Steering Reservoir. Remove the metal spacers then rubber isolators from the factory power steering mount. Install the rubber isolators then the metal spacers onto the SDHQ Power Steering Mount. Install the mount into the factory position and tighten the (3) 10mm bolts.



14. Connecting the power steering hoses. Remove the hose clamp from the larger diameter factory hose. Lube and slip this factory hose onto the AN-10 Push Lok Fitting on the bottom of the power steering reservoir.

For questions or help with the installation, please call SDHQ Offroad @ 480-633-2929
 Mon.–Fri. 8:00am–5:30pm and Sat. 8:00am–3:30pm Arizona Time. www.sdhqoffroad.com

- 15.** Lube and slip the 15" Power Steering Hose over the hard line near the frame from Step 12. Secure it onto the hard line with hose clamp.



- 16.** Using the supplied power steering fluid, fill up the power steering reservoir to the internal fill line. With the power steering cap off, lift the vehicle so the front wheels are in the air and cycle the steering rack to either side until there is no longer air bubbling into the reservoir. Refill the reservoir as needed. Start the vehicle and check for any leaks. Clean up any spilt fluid.
- 17.** Install the windshield reservoir and clip the electrical connections. Install the skid plate.
- 18.** Take your truck out for a drive to get it up to operating temperatures and to finish removing the air out of the power steering lines. The Reservoir Body and Cap will be EXTREMELY hot at operating temperatures. Refill the reservoir if needed. The fluid should be at the fill line at operating temperature. Check the reservoir after 50 miles. Enjoy your new SDHQ Power Steering Reservoir!

Double check all hardware is installed correctly and tight

Re-torque ALL bolts after 100 miles



190 S McQueen Rd
Ste 109 Gilbert, AZ 85233
Phone: 480-633-2929 | Fax: 480-633-1791
www.sdhqoffroad.com

Follow us on:



Facebook



Instagram

For questions or help with the installation, please call SDHQ Offroad @ 480-633-2929
Mon.–Fri. 8:00am–5:30pm and Sat. 8:00am–3:30pm Arizona Time. www.sdhqoffroad.com