



**SDHQ Motorsports**  
**190 S McQueen Rd**  
**Ste 109 Gilbert, AZ 85233**  
**Phone: 480-633-2929**

---

## Product Packing List

**Product:** SDHQ-53-3003-XK70

**Description:** 2022-current Toyota Tundra Billet Battery  
Terminal and Distribution Kit

_____ (1) SDHQ Billet Battery Distribution Kit	SDHQ-02-3003-D2
_____ (1) 13" 4 AWG Negative Wire	SDHQ-02-3304-B35

**Inspected and Packaged By:** \_\_\_\_\_ **Date:** \_\_\_\_\_

For questions or help with the installation, please call SDHQ Offroad @ 480-633-2929  
Mon.-Fri. 8:00am-5:30pm and Sat. 8:00am-3:30pm Arizona Time. [www.sdhqoffroad.com](http://www.sdhqoffroad.com)

Included in **SDHQ-02-3003-D2**

_____	(1) Billet Positive Battery Terminal	SDHQ-02-3003-T2-P-Rev2
_____	(1) Billet Negative Distribution Block	SDHQ-02-3003-D2-N
_____	(1) Hardware Package	SDHQ-02-3003-D2-A
_____	(1) Positive Battery Protective Boot	
_____	(1) Red Post Washer	
_____	(1) M8 - 1.25 x 30mm S.S. Socket Head Bolt	
_____	(1) 5/16" - 18 x 1 1/2" Battery Terminal Bolt	
_____	(1) 5/16" - 18 Battery Shoulder Nut	
_____	(5) 1/4" - 20 x 1/2" S.S. Hex Head Bolt	
_____	(5) 1/4" S.S. Washer	
_____	(1) 5/16" - 18 x 1" S.S. Hex Head Bolt	
_____	(1) 5/16" - 18 x 3/4" S.S. Hex Head Bolt	
_____	(2) 5/16" S.S. Washer	
_____	(2) 3/8" - 16 x 2" S.S. Hex Head Bolt	
_____	(4) 3/8" S.S. Washers	
_____	(2) 3/8" - 16 S.S. Nuts	
_____	(1) Small Tube of Anti-Seize	

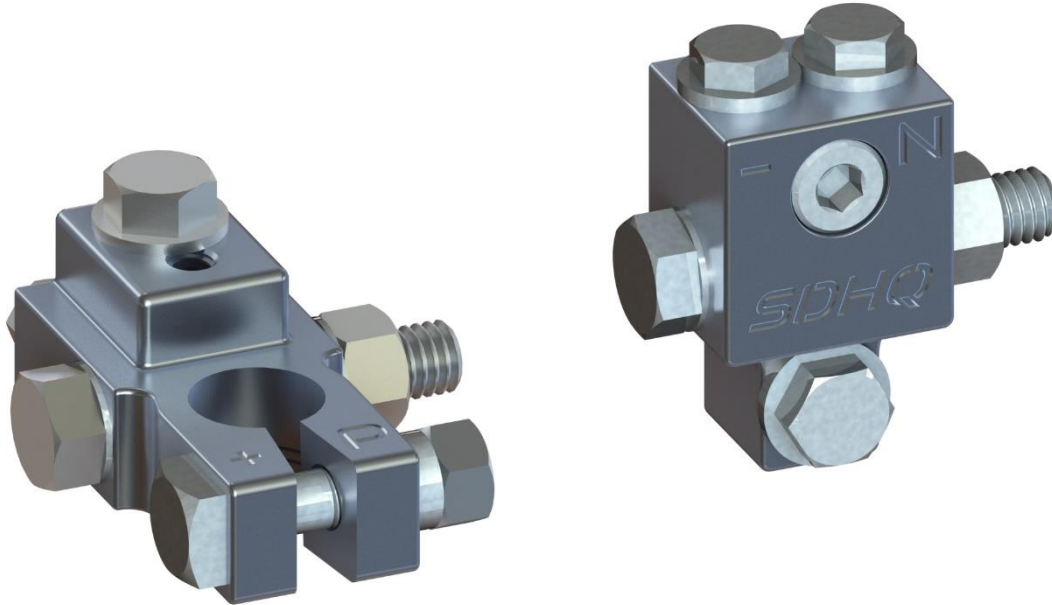


SDHQ Motorsports  
 190 S McQueen Rd  
 Ste 109 Gilbert, AZ 85233  
 Phone: 480-633-2929

## INSTALLATION INSTRUCTIONS

**Product:** SDHQ-53-3003-XK70

**Description:** 2022-current Toyota Tundra Billet Battery Terminal and Distribution Kit



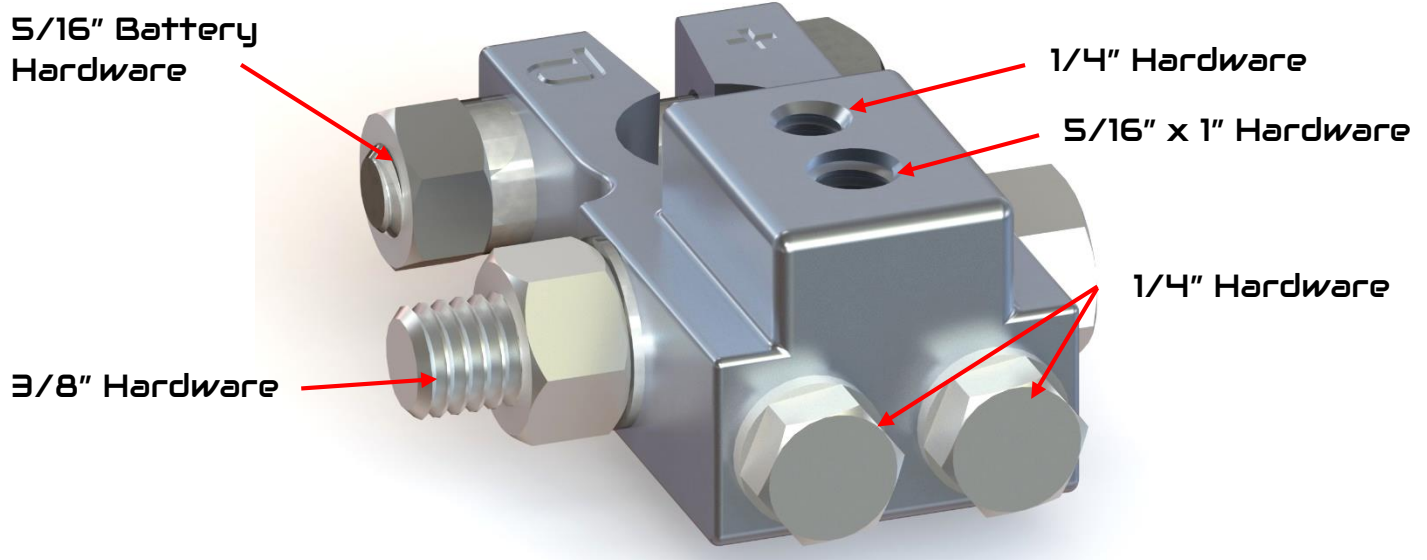
<b>Parts List</b>	<b>Hardware List</b>	<b>Required Tools</b>
(1) SDHQ Billet Battery Distribution Kit SDHQ-02-3003-D2 (1) SDHQ 13" 4 AWG Negative Wire SDHQ-02-3304-B13-35	(1) Positive Battery Protective Boot (1) Red Post Washer (1) M8 - 1.25 x 30mm S.S. Socket Head Bolt (1) 5/16" - 18 x 1 1/2" Battery Terminal Bolt (1) 5/16" - 18 Battery Shoulder Nut (5) 1/4" - 20 x 1/2" S.S. Hex Head Bolt (5) 1/4" S.S. Washer (1) 5/16" - 18 x 1" S.S. Hex Head Bolt (1) 5/16" - 18 x 3/4" S.S. Hex Head Bolt (2) 5/16" S.S. Washer (2) 3/8" - 16 x 2" S.S. Hex Head Bolt (4) 3/8" S.S. Washers (2) 3/8" - 16 S.S. Nuts (1) Small Tube of Anti-Seize	7/16", 1/2", 9/16" Sockets 10mm, 12mm Sockets Ratchet 9/16" Wrench 6mm Hex Key Rubber Mallet Pliers

### **Tech Notes**

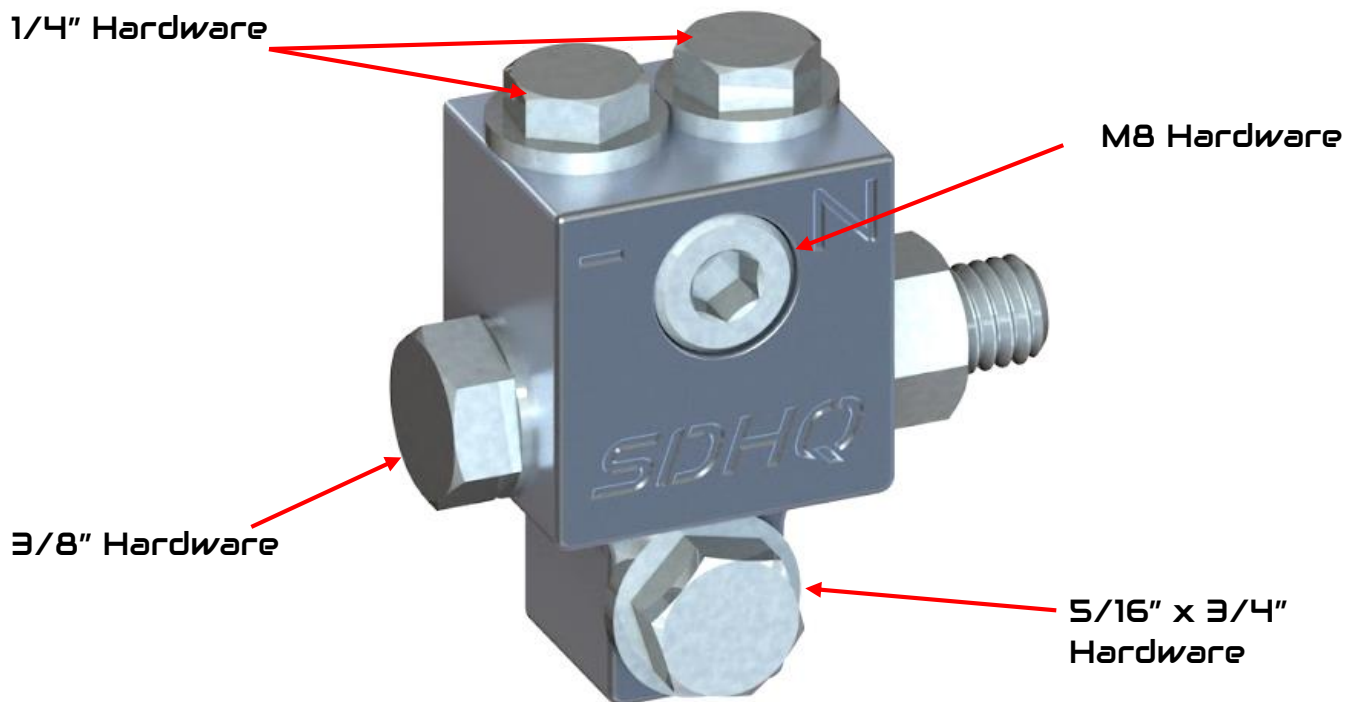
Apply Anti-Seize to all hardware.  
 Follow the Torque Specifications on the bottom of Page 5.  
 See SDHQ-02-37(01/04/10) for (1-2GA, 4-6GA, 1/0GA) Solder Lug Kits.  
 See SDHQ-02-38(02/04/06/10) for (1-2GA, 4GA, 6GA, 1/0GA) Compression Lug Kits.  
**Approx. Install Time: 1 Hour**

For questions or help with the installation, please call SDHQ Offroad @ 480-633-2929  
 Mon.-Fri. 8:00am-5:30pm and Sat. 8:00am-3:30pm Arizona Time. [www.sdhqoffroad.com](http://www.sdhqoffroad.com)

## SDHQ Positive Battery Terminal (without Stud)



## SDHQ Negative Distribution Block



**\*\*\*READ ALL INSTRUCTIONS THOROUGHLY FROM START TO FINISH BEFORE BEGINNING INSTALLATION! \*\*\***

### Installation Instructions:

1. Unbox your SDHQ Built Complete Billet Battery Terminal Kit and check over all parts. Familiarize yourself with the parts and diagrams above.

For questions or help with the installation, please call SDHQ Offroad @ 480-633-2929  
Mon.-Fri. 8:00am-5:30pm and Sat. 8:00am-3:30pm Arizona Time. [www.sdhqoffroad.com](http://www.sdhqoffroad.com)

2. Disconnect the factory positive battery terminal using 10mm and 12mm (or required) sockets. Remove all wire terminals from the factory positive battery terminal and discard the factory terminal. Install the smaller 5/16" hole on the 13" 4GA Ground Wire to the 10mm flange nut on the Negative Terminal Sensor, leaving the factory terminal attached to the vehicle.

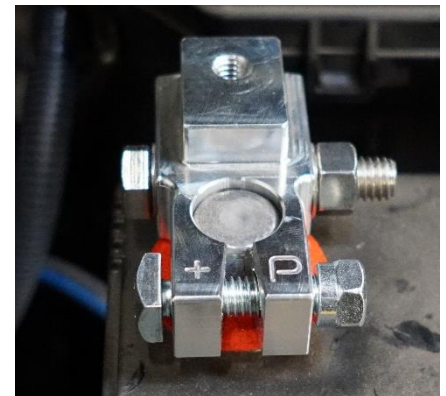
### Negative Terminal Install

3. **Installing the Negative Distribution Block.** Position the negative terminal block as shown right and secure with supplied M8 socket head bolt. Secure the larger 3/8" hole on the 13" 4GA Ground wire to the negative terminal block. Attach any other accessories to the ground block and tighten all hardware.

### Positive Terminal Install

4. **Installing the Battery Terminal.** Place the Red Post Washer and SDHQ Positive Battery Terminal on top of the positive battery post. Lightly tap on the top of the terminal using a rubber mallet to set it on the battery post. Tighten the 5/16" Battery Bolt and Nut using 1/2" wrenches on both to prevent damaging the battery post.

5. Use the top 5/16" hole for the factory terminals for factory wiring if possible. Connect any other accessories to the terminals as needed. Tighten all hardware. Install the SDHQ Positive Terminal Boot.



### Torque Specifications

1. Torque the 1/4" bolts to 4 ft-lb. Torque the 5/16" and M8 hardware to 8 ft-lb. Torque the 3/8" hardware to 18 ft-lb.



**\*\*\*Double check all hardware is installed correctly and tight\*\*\***

**\*\*\*Re-torque ALL bolts after 100 miles\*\*\***



190 S McQueen Rd  
Ste 109 Gilbert, AZ 85233  
Phone: 480-633-2929 | Fax: 480-633-1791  
[www.sdhqoffroad.com](http://www.sdhqoffroad.com)

Follow us on:



Facebook



Instagram

For questions or help with the installation, please call SDHQ Offroad @ 480-633-2929  
Mon.–Fri. 8:00am–5:30pm and Sat. 8:00am–3:30pm Arizona Time. [www.sdhqoffroad.com](http://www.sdhqoffroad.com)