



**SDHQ Motorsports**  
**190 S McQueen Rd**  
**Ste 109 Gilbert, AZ 85233**  
**Phone: 480-633-2929**

---

## Product Packing List

**Product:** SDHQ-53-1650-G3

**Description:** 2010-21 Toyota Tundra Stock Bumper Winch Mount

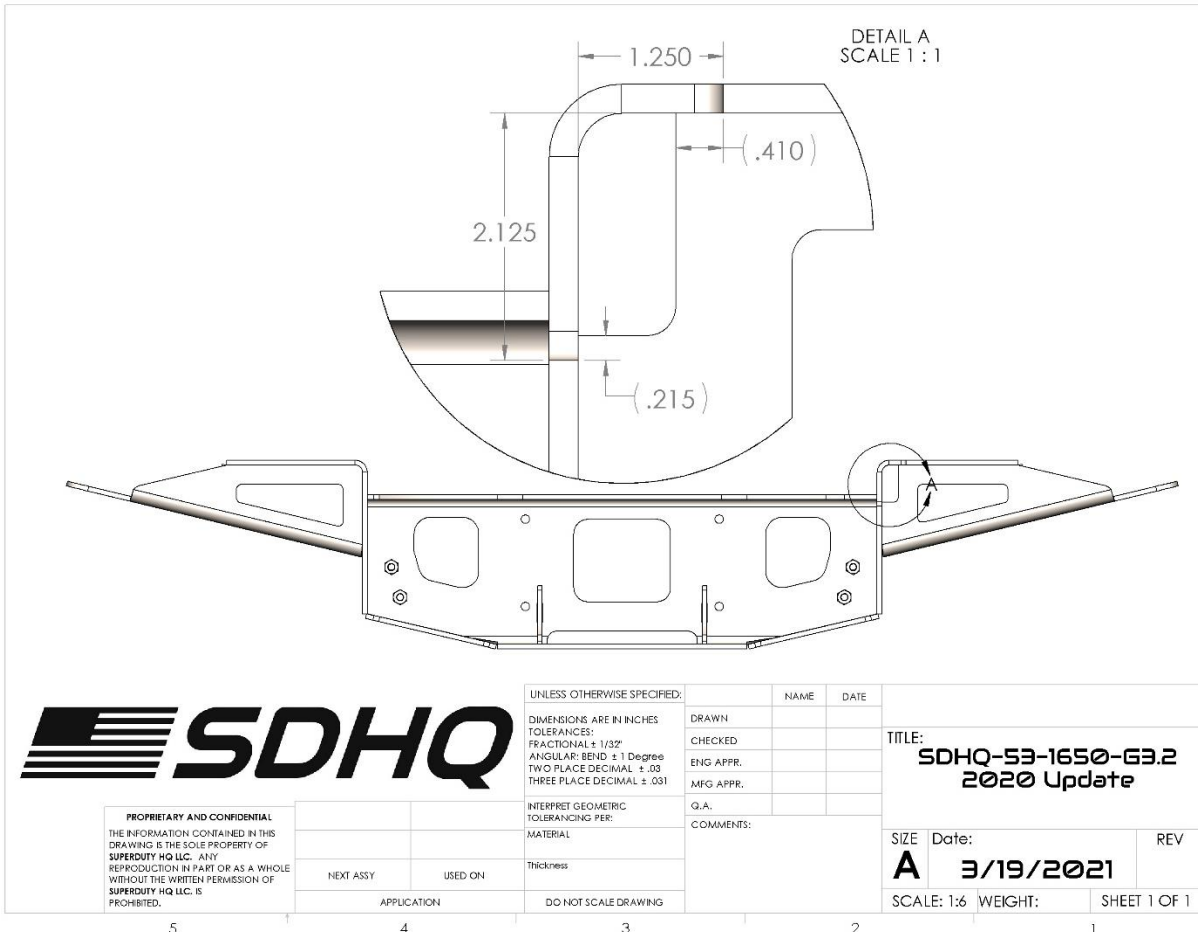
_____ (1) Winch Mount	SDHQ-53-1650-G3-A
_____ (2) Lower Support Brackets	SDHQ-53-1650-G3-B
_____ (1) Hawse and Roller Fairlead Cut Template	SDHQ-53-1650-G3-C
_____ (2) TRD Pro Lower Support Spacers	SDHQ-53-1650-G3-D
_____ (1) Hardware Package	SDHQ-53-1650-G3-E
_____ (4) 7/16" - 14 x 1" Grade 8 Bolts	
_____ (4) 7/16" Grade 8 Washers	
_____ (4) 7/16" - 14 x 1 1/2" Grade 8 Bolts	

**Inspected and Packaged By:** \_\_\_\_\_ **Date:** \_\_\_\_\_

For questions or help with the installation, please call SDHQ Offroad @ 480-633-2929  
Mon.-Fri. 8:00am-5:30pm and Sat. 8:00am-3:30pm Arizona Time. [www.sdhqoffroad.com](http://www.sdhqoffroad.com)

**\*\*\*NOTE: Update to 2020+ Toyota Tundra Hidden Winch Mounts\*\*\***

In 2020, Toyota changed the location of the lower AC line. If you purchase a HWM second hand and the AC line is in the way, mark the dimensions shown below and use a cut off wheel to clearance the mount.



For questions or help with the installation, please call SDHQ Offroad @ 480-633-2929  
Mon.–Fri. 8:00am–5:30pm and Sat. 8:00am–3:30pm Arizona Time. [www.sdhqoffroad.com](http://www.sdhqoffroad.com)



SDHQ Motorsports  
 190 S McQueen Rd  
 Ste 109 Gilbert, AZ 85233  
 Phone: 480-633-2929

## INSTALLATION INSTRUCTIONS

**Product:** *SDHQ-53-1650-G3*

**Description:** *2010-21 Toyota Tundra stock bumper winch mount*



<u>Parts List</u>	<u>Hardware List</u>	<u>Required Tools</u>
(1) Winch Mount SDHQ-53-1650-G3-A (2) Lower Support Brackets SDHQ-53-1650-G3-B (1) Hawse and Roller Fairlead Cut Template SDHQ-53-1650-G3-C (2) TRD Pro Lower Support Spacers SDHQ-53-1650-G3-D (1) Hardware Package SDHQ-53-1650-G3-E	(4) 7/16" – 14 x 1" Grade 8 Bolts (4) 7/16" Grade 8 Washers (4) 7/16" – 14 x 1 ½" Grade 8 Bolts	10mm socket/wrench 12mm socket/wrench 13mm socket/wrench 14mm socket/wrench 17mm socket/wrench Sufficient tools for cutting bumper plastic and sheet metal; body saw, hole saw, files etc.

### Tech Notes

Some cutting of the factory bumper is required.  
 This mount is specifically designed to fit the Warn Zeon Platinum with wireless control; others may fit, but have not been tested. **(If using a Warn Zeon, the "Zeon Mounting Kit" is required, Part# 53-1660-G3-A)**

Includes template for Hawse cut out.  
 Replaces factory aluminum bumper mount.

\*\*Approx install time = 6-8hrs\*\*

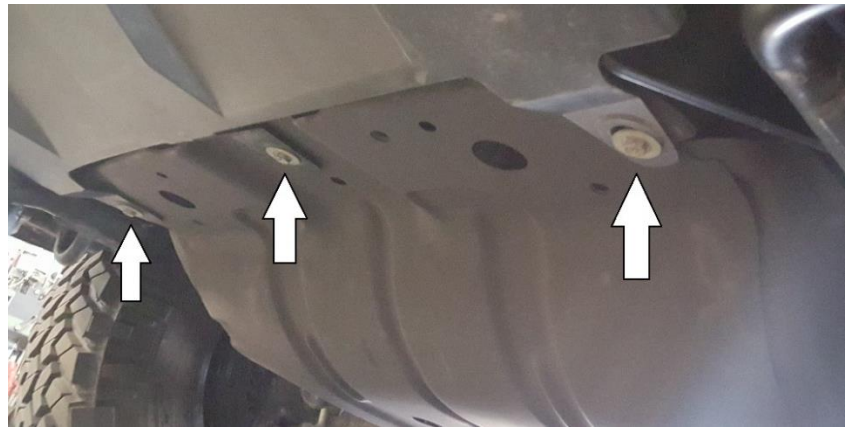
**\*\*\*READ ALL INSTRUCTIONS THOROUGHLY FROM START TO FINISH BEFORE BEGINNING INSTALLATION!\*\*\***

For questions or help with the installation, please call SDHQ Offroad @ 480-633-2929  
 Mon.–Fri. 8:00am–5:30pm and Sat. 8:00am–3:30pm Arizona Time. [www.sdhqoffroad.com](http://www.sdhqoffroad.com)

## **Installation Instructions:**

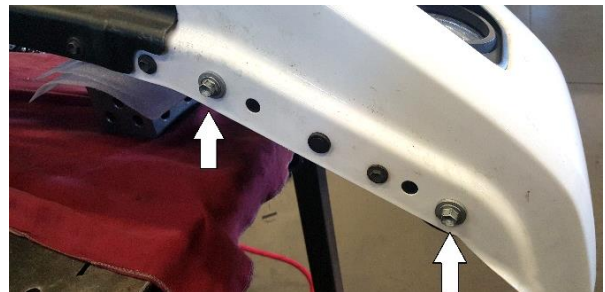
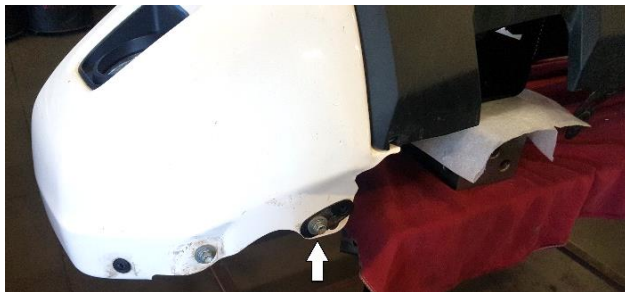
### **1. Removing the factory front bumper.**

Remove the (3) 10mm bolts holding the lower part of the plastic bumper to the skid plate. Remove the (4) 10mm bolts, (1) 12mm bolt, and 1 plastic clip holding the 2 front outer plastic covers on the bumper. Unplug fog lights and parking sensors. Remove factory tow hooks using a 17mm socket.



2. Remove the (8) 14mm nuts holding the bumper on. Remove the bumper.

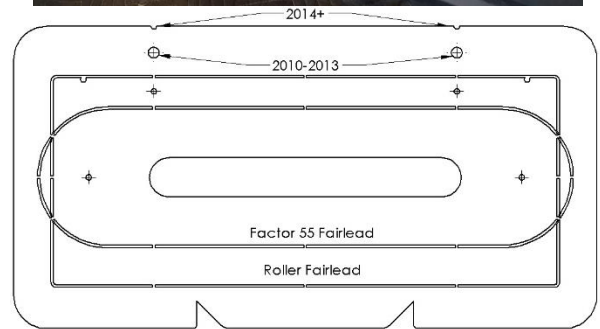
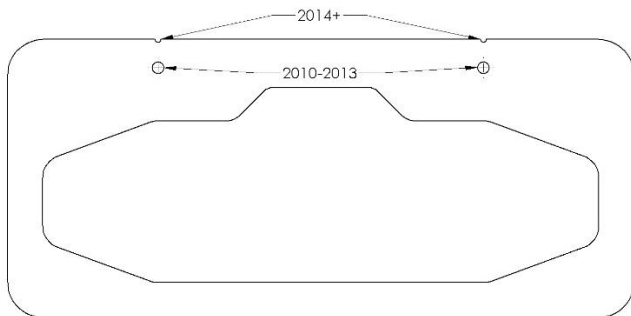
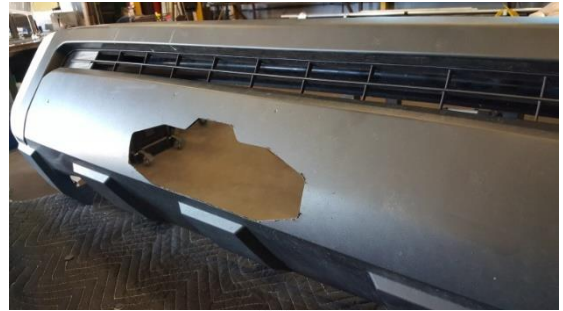
3. Remove the bumper skin from bumper mount by removing the 3 remaining 12mm bolts on each side of the bumper and unplug the sensors.



4. Next remove the 2 steel mounts from the factory aluminum mount.



**5. Cutting factory front bumper.** Using the provided template to cut for the Hawse or roller fairlead opening, line up the two notches or holes at the top of the template to match the factory license plate holes and tap your template. Use the upper notches for 2014+, and the lower set of holes for 2010-2013. A body saw is recommended for cutting the bumper plastic. Cut out using the template as a guide. Clean all edges so they are burr free.



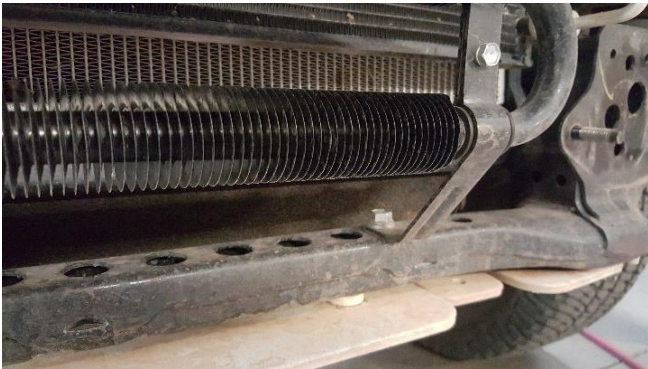
**6. Install the factory bumper brackets to the SDHQ winch mount using factory hardware. Adjust the brackets to fit as close to the factory position as possible.**



**7. If using Warn Zeon, refer to the Zeon controller relocation and wiring kit instructions, PN 53-1660, for wiring and mounting instructions. Install the winch to the mount and attach the winch line to the drum per winch manufacturer's instructions. Install the Hawse or roller fairlead to the winch mount.**



8. The factory power steering cooler will have to be slightly moved back to clear the new winch. Carefully bend the mounting brackets near the frame side of the bracket so the cooler moves back towards the radiator, but does not contact. Once the bumper and winch mount are back on the truck, make sure there is no contact between the lines and the winch mount.



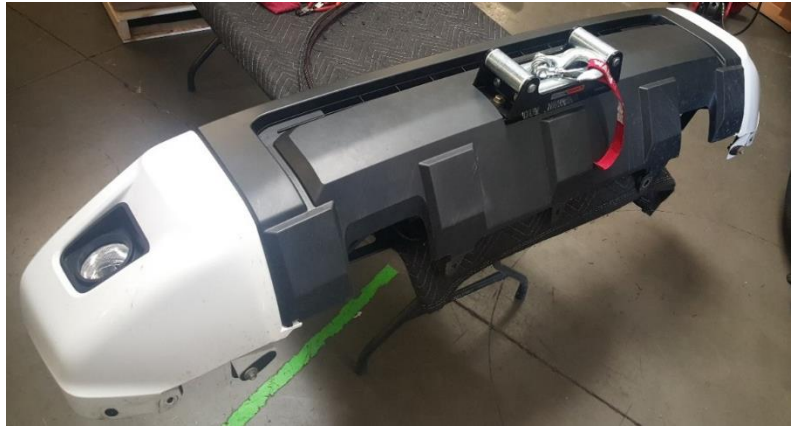
9. **2010-2013 Models only.** Mark the inside edge of the lower sheet metal section of the factory bumper on both sides. Cut the sheet metal and remove the center section. Clean up all sharp edges on remaining sheet metal.



10. **2014+ Models only.** Place the bumper skin on the mount and mark where the winch cables may come in contact with the factory bumper. Trim the sheet metal on bumper to clear as shown.



**11.** Mount the bumper skin to the factory mounts that are already bolted to the SDHQ winch mount. Make sure the Hawse or roller fairlead line up with your cutout, and adjust if necessary. Now is a good time to plug your sensors back into the wires before bolting the bumper back on the truck.



**12. 2014+ Models only.** Before installing the bumper on the truck, remove the grille by removing the (4) 10mm bolts, 2 plastic push clips and 5 lower clips. This will allow easier installation and routing of the cables.



**13.** Install the bumper/winch mount assembly on the truck. Make sure you have at least 2 people to lift the heavy bumper and winch assembly. Level the bumper to match your truck and tighten the (8) 14mm nuts.



**14.** Install the 2 supplied lower support brackets. Bolt the front of the brackets to the mount using the supplied 7/16" hardware, and bolt the back of the brackets to the frame using the factory hardware through the tow hooks and the bracket. Some trimming of the plastic may be required.



**\*Note: If you have a TRD Pro or TRD Pro skid plate you need to add the provided spacers between the lower supports and winch mount using the included longer bolts.**



**15.** Wire your winch according to manufactures specifications. Secure all wiring so no damage can occur due to abrasion or pinching. Reinstall your grill with the factory clips and hardware (2014+ models only). If the Zeon Relocation kit was purchased, secure the wires as shown below with the loom clamps and tek screws.



**16.** Plug your fog lights and parking sensors back in. Reinstall the 2 outer plastic covers for the bumper with the (4) 10mm, (1) 12mm, and 1 plastic clip hardware. Reinstall the (3) 10mm bolts holding the lower bumper plastic to the skid plate.

**17.** You can now power up your winch and spool your rope per the manufacturer's recommendations.





**\*\*\*Double check all hardware is installed correctly and tight\*\*\***

**\*\*\*Re-torque ALL bolts after 100 miles\*\*\***



190 S McQueen Rd  
Ste 109 Gilbert, AZ 85233  
Phone: 480-633-2929 | Fax: 480-633-1791  
[www.sdhqoffroad.com](http://www.sdhqoffroad.com)

Follow us on:



Facebook



Instagram

For questions or help with the installation, please call SDHQ Offroad @ 480-633-2929  
Mon.–Fri. 8:00am–5:30pm and Sat. 8:00am–3:30pm Arizona Time. [www.sdhqoffroad.com](http://www.sdhqoffroad.com)