



SDHQ Motorsports
190 S McQueen Rd
Ste 109 Gilbert, AZ 85233
Phone: 480-633-2929

Product Packing List

Product: SDHQ-53-1540-G3

Description: 2007-2021 Toyota Tundra Rock Sliders

_____ (1) Driver Side Slider	SDHQ-53-1540-G3-A
_____ (1) Passenger Side Slider	SDHQ-53-1540-G3-B
_____ (2) Front Inner Double Bracket	SDHQ-53-1540-G3-C
_____ (1) Gas Tank Upper Bracket	SDHQ-53-1540-G3-D
_____ (1) Gas Tank Lower Bracket	SDHQ-53-1540-G3-E
_____ (5) Upper Brackets	SDHQ-50-1540-P1
_____ (5) Lower Brackets	SDHQ-50-1540-P3
_____ (2) Front Inner Single Bracket	SDHQ-50-1540-P4
_____ (1) Hardware Package	SDHQ-53-1540-G3-F
_____ (12) 3/8" - 16 x 1 1/4" Grade 8 Bolts	
_____ (12) 3/8" Grade 8 Flat Washers	
_____ (12) 3/8" Grade 8 Lock Washers	
_____ (12) 7/16" - 14 x 1 1/4" Grade 8 Bolts	
_____ (12) 7/16" Grade 8 Flat Washers	
_____ (12) 7/16" Grade 8 Lock Washers	
_____ (1) Tube of Loctite	

Inspected and Packaged By: _____ Date: _____

For questions or help with the installation, please call SDHQ Offroad @ 480-633-2929
Mon.-Fri. 8:00am-5:30pm and Sat. 8:00am-3:30pm Arizona Time. www.sdhqoffroad.com

**For questions or help with the installation, please call SDHQ Offroad @ 480-633-2929
Mon.–Fri. 8:00am–5:30pm and Sat. 8:00am–3:30pm Arizona Time. www.sdhqoffroad.com**



SDHQ Motorsports
 190 S McQueen Rd
 Ste 109 Gilbert, AZ 85233
 Phone: 480-633-2929

INSTALLATION INSTRUCTIONS

Product: SDHQ-53-1540-G3

Description: 2007-2021 Toyota Tundra Rock Sliders



Parts List	Hardware List	Required Tools
(1) Driver Side Slider SDHQ-53-1540-G3-A	(12) 3/8" - 16 x 1 1/4" bolts	9/16" open/box combination wrench
(1) Passenger Side Slider SDHQ-53-1540-G3-B	(12) 3/8" flat washers	5/8" socket/wrench
(2) Front Inner Double Bracket SDHQ-53-1540-G3-C	(12) 3/8" lock washers	12mm socket/wrench
(1) Gas Tank Upper Bracket SDHQ-53-1540-G3-D	(12) 7/16" - 14 x 1 1/4" bolts	14mm socket/wrench
(1) Gas Tank Lower Bracket SDHQ-53-1540-G3-E	(12) 7/16" flat washers	Wobble Adapter
(5) Upper Brackets SDHQ-50-1540-P1	(12) 7/16" lock washers	
(5) Lower Brackets SDHQ-50-1540-P3	(1) Tube of Loctite	
(2) Front Inner Single Bracket SDHQ-50-1540-P4		
(1) Hardware Package SDHQ-53-1540-G3-F		

Tech Notes

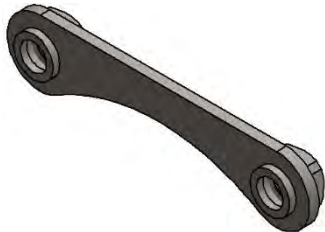
The driver's side slider can be tricky to bolt up next to the gas tank.
 Follow instructions carefully in order to save time and frustration.
 Use red Loctite on all hardware.
****Approx install time = 2 hours****



Front Inner Double Bracket
SDHQ-53-1540-63-C

Gas Tank Upper Bracket
SDHQ-53-1540-63-D

Gas tank Lower Bracket
SDHQ-53-1540-63-E



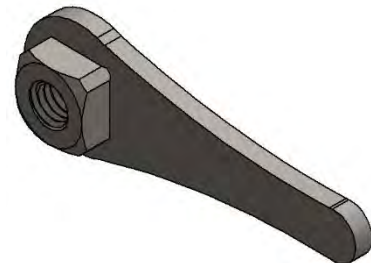
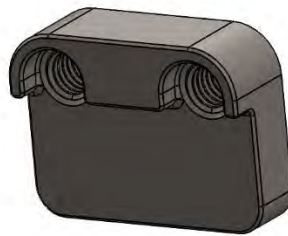
Upper Bracket
SDHQ-50-1540-P1



Lower Bracket
SDHQ-50-1540-P3



Front Inner Single Bracket
SDHQ-50-1540-P4



*****READ ALL INSTRUCTIONS THOROUGHLY FROM START TO FINISH BEFORE BEGINNING INSTALLATION! *****

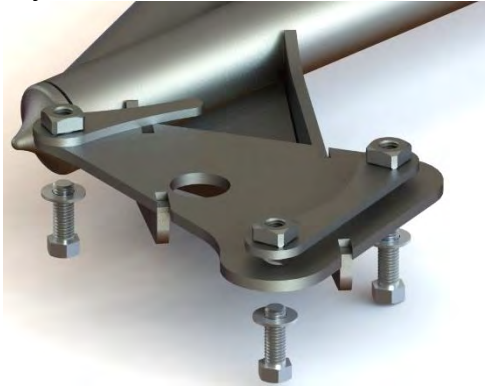
Installation Instructions:

1. If your tundra is equipped with a gas tank skid plate, remove the 4 or 6 (depending on tank option) 12mm bolts holding it on, remove, and set aside for ease of installation.



For questions or help with the installation, please call SDHQ Offroad @ 480-633-2929
Mon.-Fri. 8:00am-5:30pm and Sat. 8:00am-3:30pm Arizona Time. www.sdhqoffroad.com

2. Starting with the driver's side, insert the Front Inner Double Bracket and the Front Inner Single Bracket into the front body mount. The Front Inner Double Bracket locates on the lower 2 open holes with the nuts facing up, spacer facing down, and the flat edge going away from the body mount. The Front Inner Single Bracket locates in the top open hole through the back side of the factory mount with the nut facing up. When tightening, make sure the tail of the bracket isn't contacting the body. This can cause noise and damage.



3. For installing the sliders, align the slider with the Front Inner Single Bracket and Front Inner Double Brackets. Place a jack under the front leg of the slider. Raise the slider until the upper Bracket with 7/16" bolts can begin to be threaded. Leave the 7/16" bolts loose for adjustment when installing the rest of the bolts.

4. Move the jack to the second mounting point from the front of the slider and jack the slider tight against the frame. Use the 7/16" bolts for the Upper Brackets, and 3/8" bolts for the Lower Brackets. Use the round Upper Bracket Mounts with the step facing out, and the Lower Brackets with the spacer facing toward the mount. Do not tighten until all bolts are threaded.

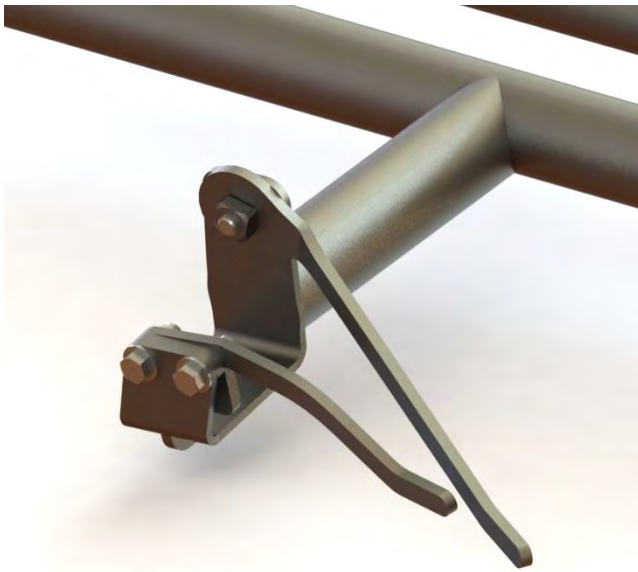


5. The fuel tank will need to be lowered to access the rear driver mount. Place a large flat board that fits between the tank straps under the middle of the tank. Jack up the tank with the board enough to take the pressure off the straps. Use a 14mm socket and wobble adapter to loosen the tank strap bolts on the driver side. Lower the tank a few inches and slide the tank towards the passenger side a few inches to allow access to the Rear Slider Mount. Be cautious when moving the gas tank. Move the brake lines as necessary to fit the brackets in.

* Some vehicles will have a larger tank with (3) straps.

* Some vehicles may require the driveshaft to be unbolted at the differential to allow for the fuel tank to be pushed over adequately enough.

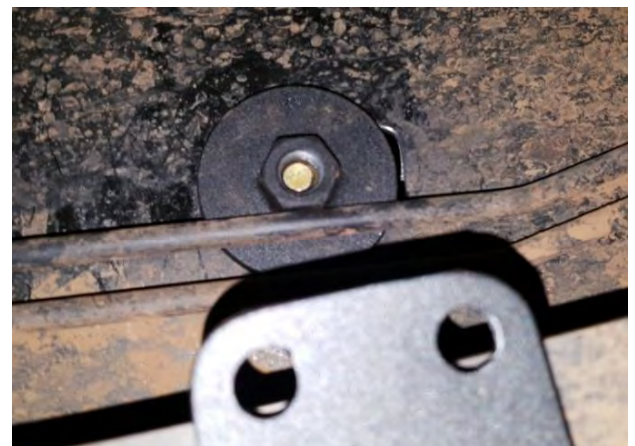
6. Position the Upper Gas Tank Bracket so the rear, upper 7/16" bolt can be threaded into the bracket. Position the Lower Gas Tank Bracket so the lower (2) 3/8" bolts can be threaded into the bracket. This can be tricky, and care should be taken as to not cross thread the bolts. Not all factory frames are the same. It is sometimes necessary to place a jack under the slider bracket to sit up to the bottom of the frame tightly.



7. Adjust the slider as needed. Tighten all of the bolts starting with the 7/16" bolts, then the 3/8" hardware.

8. For the passenger side, follow the same steps as the driver's side. Use Lower Bracket and 7/16" hardware in place of the Gas Tank Bracket.

9. On the inside of the frame rail there are 2 brake lines that need to be moved slightly in order for the Upper Bracket to fit properly. Carefully move these lines far enough out of the way as to not interfere with the brackets. Make sure the lines are not rubbing on a sharp corner and are not kinked.



10. Consistent with the driver's side, get all of the hardware in and started before tightening anything. Once everything is started and snug, tighten all the 7/16" hardware first, then the 3/8" hardware.

*****Double check all hardware is installed correctly and tight*****

*****Re-torque ALL bolts after 100 miles*****



190 S McQueen Rd
Ste 109 Gilbert, AZ 85233
Phone: 480-633-2929 | Fax: 480-633-1791
www.sdhqoffroad.com

Follow us on:



Facebook



Instagram

For questions or help with the installation, please call SDHQ Offroad @ 480-633-2929
Mon.–Fri. 8:00am–5:30pm and Sat. 8:00am–3:30pm Arizona Time. www.sdhqoffroad.com