



SDHQ Motorsports
190 S McQueen Rd
Ste 109 Gilbert, AZ 85233
Phone: 480-633-2929

Product Packing List

Product: SDHQ-53-1406-G3

Description: **2007-2021 Toyota Tundra 3/4" Lift Shackles**

_____ (4) 3/8" Shackles

SDHQ-53-1406-G3-A

_____ (1) Hardware Package

SDHQ-53-1406-G3-B

_____ (2) M14 - 2.0 x 110mm Bolts

_____ (2) M14 - 2.0 x 140mm Bolts

_____ (4) M14 - 2.0 Flange Lock Nuts

_____ (4) M14 Flat Washers

Inspected and Packaged By: _____ **Date:** _____

For questions or help with the installation, please call SDHQ Offroad @ 480-633-2929
Mon.-Fri. 8:00am-5:30pm and Sat. 8:00am-3:30pm Arizona Time. www.sdhqoffroad.com

**For questions or help with the installation, please call SDHQ Offroad @ 480-633-2929
Mon.–Fri. 8:00am–5:30pm and Sat. 8:00am–3:30pm Arizona Time. www.sdhqoffroad.com**

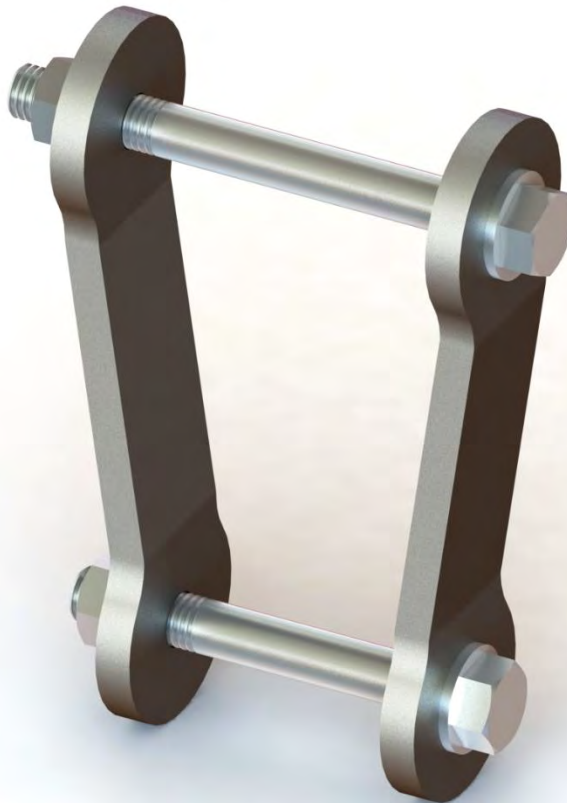


SDHQ Motorsports
190 S McQueen Rd
Ste 109 Gilbert, AZ 85233
Phone: 480-633-2929

INSTALLATION INSTRUCTIONS

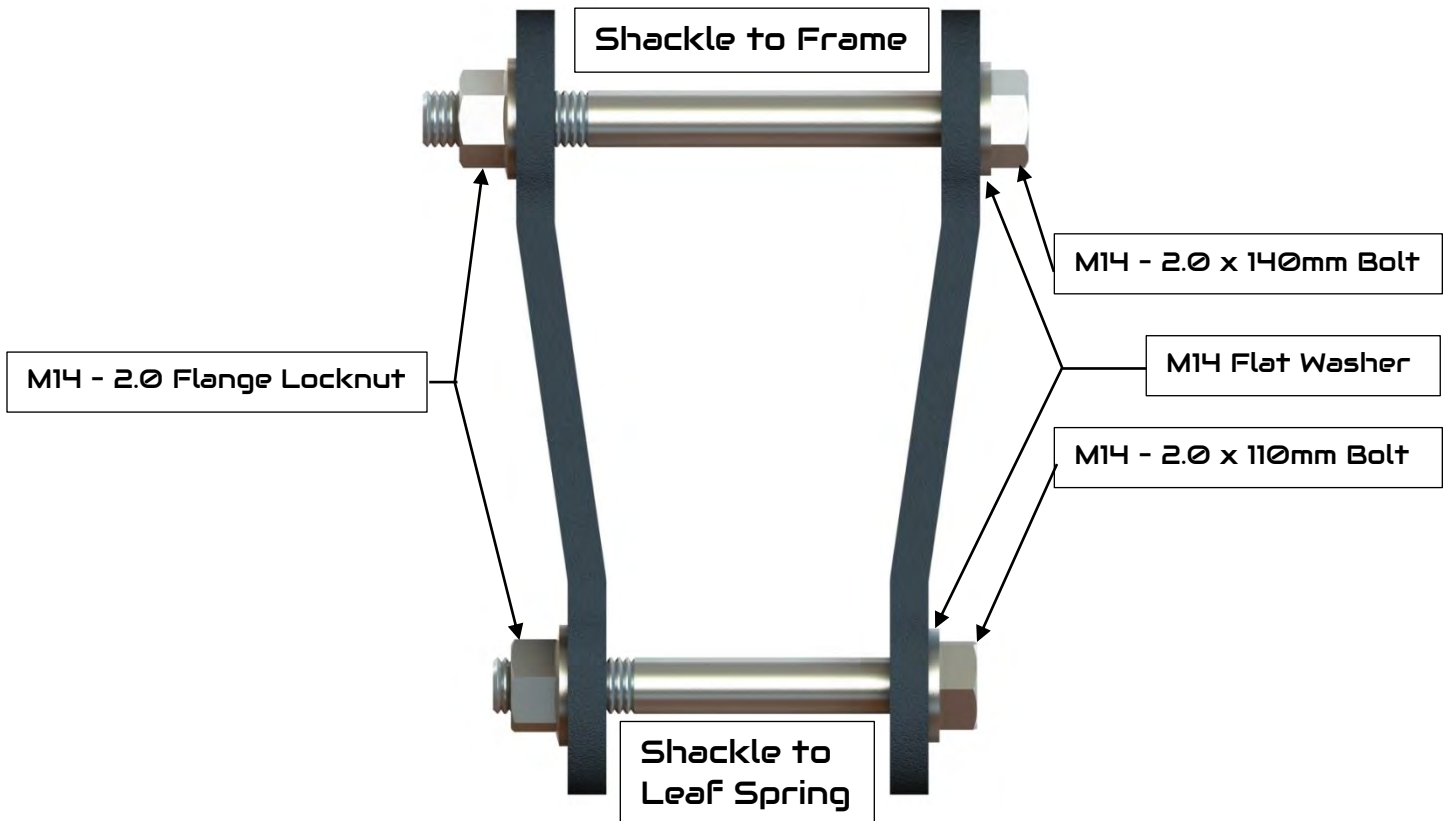
Product: *SDHQ-53-1406-G3*

Description: 2007-2021 Toyota Tundra 3/4" Lift Shackles



| <u>Parts List</u> | <u>Hardware List</u> | <u>Required Tools</u> |
|--|--|---|
| (4) 3/8" Lift Shackles SDHQ-53-1406-G3-A (1) Hardware Kit SDHQ-53-1406-G3-B | (2) M14 – 2.0 x 110mm Bolts (2) M14 – 2.0 x 140mm Bolts (4) M14 – 2.0 Flange Lock Nuts (4) M14 Flat Washers | 19mm and 22mm Sockets Ratchet 22mm Wrench Jack and Jack Stands |
| <u>Tech Notes</u> | | |
| 3/4" Lift Shackles Use Medium Strength Loctite on all hardware. Approx. Install Time: 2 Hours | | |

For questions or help with the installation, please call SDHQ Offroad @ 480-633-2929
Mon.–Fri. 8:00am–5:30pm and Sat. 8:00am–3:30pm Arizona Time. www.sdhqoffroad.com



*****READ ALL INSTRUCTIONS THOROUGHLY FROM START TO FINISH BEFORE BEGINNING INSTALLATION!*****

Installation Instructions:

1. Park the vehicle on flat, level ground. Remove the spare tire, this will help in Step 3 when removing the factory hardware. Chock the front wheels.
2. Jack up the rear of the truck tall enough such that the suspension can fully droop. Remove the rear wheels if necessary. Support the truck's frame on jack stands.
3. Support the axle with the jack. Starting on the driver side, remove the factory nuts on the shackle using a 19mm socket and ratchet.
4. Once both nuts have been removed, the factory shackles can be removed. Align the SDHQ shackles to the frame and leaf spring. Be sure to use medium strength Loctite on all hardware. Insert (1) M14 – 2.0 x 110mm bolt with (1) M14 Flat washer through the inside bottom shackle mount, the leaf spring eyelet and the outside bottom shackle mount. Thread (1) M14 – 2.0 Flange Locknut.
5. Align the top mounting holes of the shackles with the frame hole. Insert (1) M14 – 2.0 x 140mm bolt with (1) M14 Flat washer through the inside top shackle mount, the frame shackle mount and the outside top shackle mount. Thread (1) M14 – 2.0 Flange Locknut.
6. Follow Steps 3-5 on the passenger side shackle. Torque the shackle hardware to 150 ft-lbs while the truck is on the ground.

*****Double check all hardware is installed correctly and tight*****

*****Re-torque ALL bolts after 100 miles*****



190 S McQueen Rd
Ste 109 Gilbert, AZ 85233
Phone: 480-633-2929 | Fax: 480-633-1791
www.sdhqoffroad.com

Follow us on:



Facebook



Instagram

For questions or help with the installation, please call SDHQ Offroad @ 480-633-2929
Mon.–Fri. 8:00am–5:30pm and Sat. 8:00am–3:30pm Arizona Time. www.sdhqoffroad.com