



SDHQ Motorsports
190 S McQueen Rd
Ste 109 Gilbert, AZ 85233
Phone: 480-633-2929

Product Packing List

Product: *SDHQ-53-1330-G3*

Description: '07-'21 Toyota Tundra & '08-'21 200 Series
Land Cruiser Body Mount Chop

_____ (1) Driver Side	SDHQ-53-1330-G3-A
_____ (1) Passenger Side	SDHQ-53-1330-G3-B
_____ (1) Body Mount Cut Template	SDHQ-53-1330-G3-C

Inspected and Packaged By: _____ **Date:** _____



SDHQ Motorsports
190 S McQueen Rd
Ste 109 Gilbert, AZ 85233
Phone: 480-633-2929

INSTALLATION INSTRUCTIONS

Product: SDHQ-53-1330-G3

Description: '07-'21 Toyota Tundra & '08-'21 200 Series Land Cruiser Body Mount Chop



<u>Parts List</u>	<u>Hardware List</u>	<u>Required Tools</u>
(1) Driver Side SDHQ-53-1330-G3-A (1) Passenger Side SDHQ-53-1330-G3-B (1) Body Mount Cut Template	N/A	Welder 80 grit Grinder Sawzall Sawzall metal blade Sharpie Jack and Jack Stands
<u>Tech Notes</u>		
Use Safety Glasses and gloves when cutting the body mount. Fits 2008-2021 200 Series Land Cruiser. Be cautious of any wiring when cutting the body mount. Approx. Install Time: 2 Hours		

*****READ ALL INSTRUCTIONS THOROUGHLY FROM START TO FINISH BEFORE BEGINNING INSTALLATION! *****

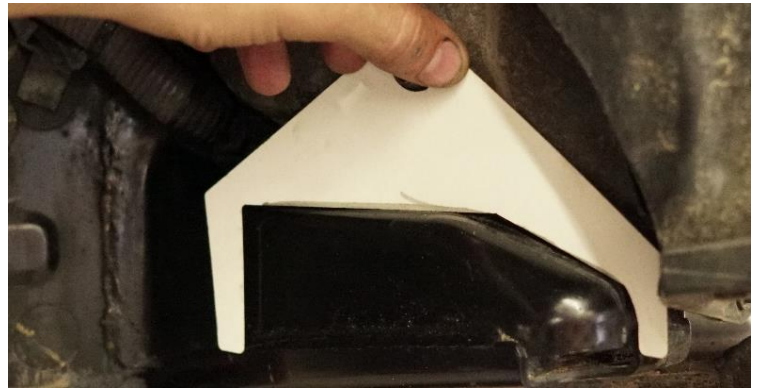
For questions or help with the installation, please call SDHQ Offroad @ 480-633-2929
Mon.-Fri. 8:00am-5:30pm and Sat. 8:00am-3:30pm Arizona Time. www.sdhqoffroad.com

Installation Instructions:

1. Chock the rear wheels, jack the front of your truck off the ground and place it on jack stands. Remove the front wheels. Cut the fender liner such that the body mount is easily accessible. Clean off the body mount and the surrounding area so everything is easily visible.



2. Place the Body Mount Cut Template against the body mount, centering the hole with the bolt as pictured. Sharpie around the template to mark what is needed to be cut. Use a Sawzall and the metal blade to cut the flat parts of the body mount. Use the grinder to finish cutting the body mount and clean up the cuts.



3. Verify fitment of the body mount plate. If the plate sits flush against the chopped body mount, tack it in place. If it does not, grind what needs to be trimmed. Once tacked in place, verify placement one last time and then weld it in place. Paint over any bare metal once complete to prevent any rust.



*****Double check all hardware is installed correctly and tight*****

*****Re-torque ALL bolts after 100 miles*****



190 S McQueen Rd
Ste 109 Gilbert, AZ 85233
Phone: 480-633-2929 | Fax: 480-633-1791
www.sdhqoffroad.com

Follow us on:



Facebook



Instagram

For questions or help with the installation, please call SDHQ Offroad @ 480-633-2929
Mon.–Fri. 8:00am–5:30pm and Sat. 8:00am–3:30pm Arizona Time. www.sdhqoffroad.com