



SDHQ Motorsports
190 S McQueen Rd
Ste 109 Gilbert, AZ 85233
Phone: 480-633-2929

Product Packing List

Product: SDHQ-53-1203-G3

Description: 14-21 Tundra Hood Scoop Light Mount

_____ (1) Driver Side S.S. Upper Bracket	SDHQ-53-1203-G3-A
_____ (1) Passenger Side S.S. Upper Bracket	SDHQ-53-1203-G3-B
_____ (1) Driver Side S.S. Lower Bracket	SDHQ-53-1203-G3-C
_____ (1) Passenger Side S.S. Lower Bracket	SDHQ-53-1203-G3-D
_____ (1) 36" Door Edge Trim	SDHQ-53-1203-G3-E
_____ (1) Hardware Package	SDHQ-53-1203-G3-F
_____ (2) 1/4" - 20 x 1/2" S.S. Hex Head Bolts	
_____ (4) 1/4" - 20 x 3/4" S.S. Hex Head Bolts	
_____ (6) 1/4" S.S. Flat Washers	
_____ (6) 10 - 24 Nut Clips	
_____ (6) 10 - 24 x 1/4" S.S. Button Head Bolts	
_____ (6) 3/16" x 1" S.S. Flat Washers	
_____ (2) Hole Drilling Templates	

Inspected and Packaged By: _____ Date: _____

For questions or help with the installation, please call SDHQ Offroad @ 480-633-2929
Mon.-Fri. 8:00am-5:30pm and Sat. 8:00am-3:30pm Arizona Time. www.sdhqoffroad.com

**For questions or help with the installation, please call SDHQ Offroad @ 480-633-2929
Mon.–Fri. 8:00am–5:30pm and Sat. 8:00am–3:30pm Arizona Time. www.sdhqoffroad.com**



SDHQ Motorsports
 190 S McQueen Rd
 Ste 109 Gilbert, AZ 85233
 Phone: 480-633-2929

INSTALLATION INSTRUCTIONS

Product: *SDHQ-53-1203-G3*

Description: 14-21 Tundra Hood Scoop Light Mount



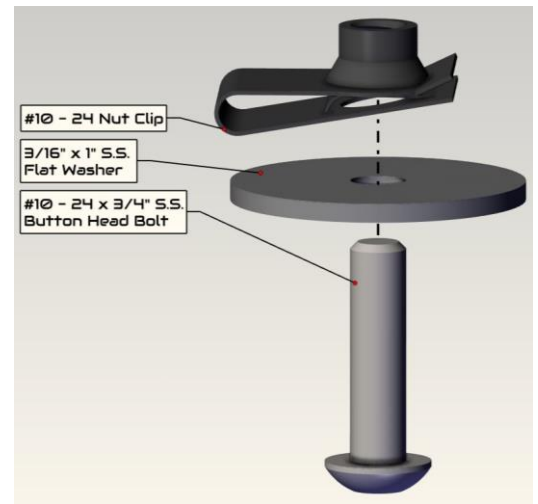
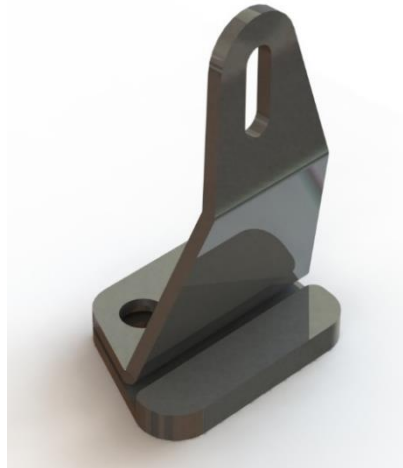
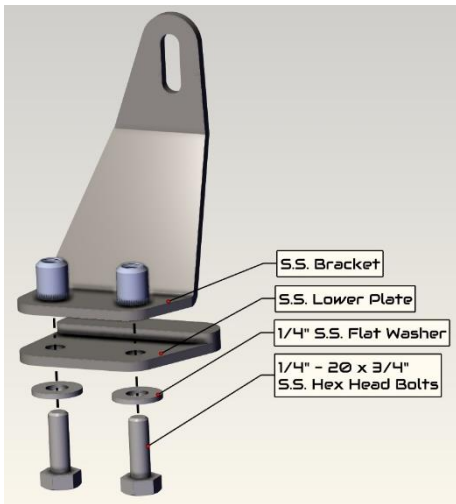
<u>Parts List</u>	<u>Hardware List</u>	<u>Required Tools</u>
(1) Driver Side S.S. Upper Bracket SDHQ-1203-G3-A (1) Passenger Side S.S. Upper Bracket SDHQ-1203-G3-B (1) Driver Side S.S. Lower Bracket SDHQ-1203-G3-C (1) Passenger Side S.S. Lower Bracket SDHQ-1203-G3-D (1) 36" Door Edge Trim SDHQ-1203-G3-E (1) Hardware Package SDHQ-1203-G3-F	(2) 1/4"-20 x 1/2" S.S. Hex Head Bolts (4) 1/4"-20 x 3/4" S.S. Hex Head Bolts (6) 1/4" S.S. Flat washers (6) 10-24 nut clips (6) 10-24 x 3/4" S.S. button head bolts (6) 3/16" x 1" S.S. Flat washers (2) Hole drilling templates	-7/16" socket/wrench -1/8" allen wrench -10mm socket/wrench -Philips head screw driver -Side cutters -Drill - 5/16" drill bit -3 1/4" hole saw -Body saw(preferred), or means of cutting sheet metal -Barrel sander for sheet metal clean up

Tech Notes

- Designed specifically for the Baja Designs 40" S8
- This installation requires some trimming of the factory hood, plastic, and holes to be drilled.
- Failure to drill holes and use all of the provided nutclips can cause damage to hood scoop.

****Approx install time = 4-6 hours****

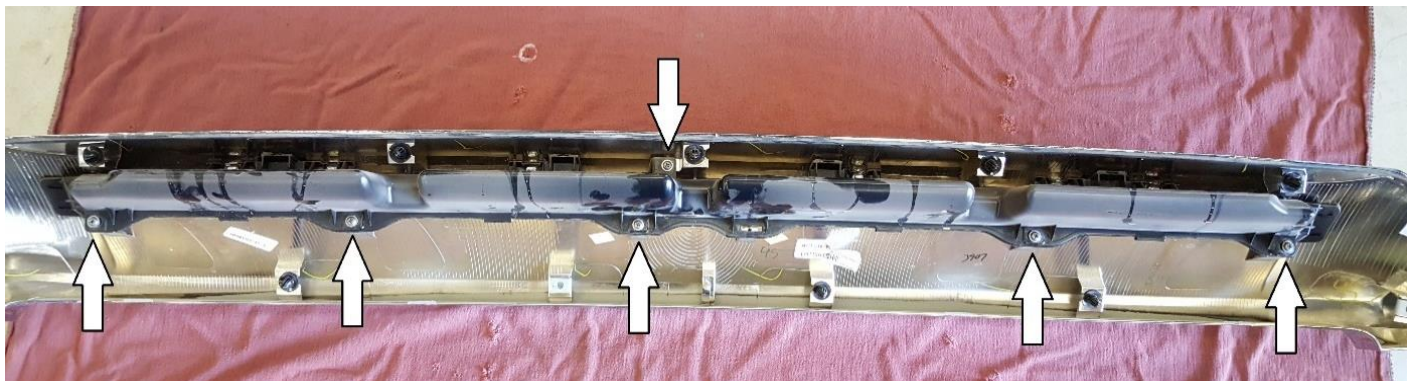
For questions or help with the installation, please call SDHQ Offroad @ 480-633-2929
 Mon.-Fri. 8:00am-5:30pm and Sat. 8:00am-3:30pm Arizona Time. www.sdhqoffroad.com



*****READ ALL INSTRUCTIONS THOROUGHLY FROM START TO FINISH BEFORE BEGINNING INSTALLATION! *****

Installation Instructions:

1. Remove the factory plastic from the front of the hood by removing the (3) 10mm bolts under the hood and by gently pulling the plastic straight out to release the clips.
2. Once the plastic is off, remove the factory hood scoop insert by removing the 6 Philips head screws securing it. These will not be reused.

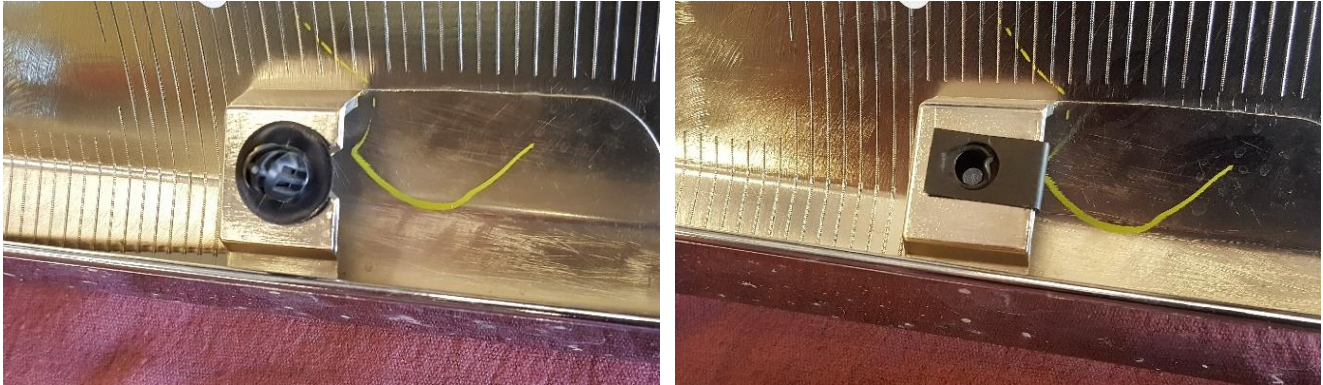


3. Using side cutters or a barrel sander, cut the outer top (2) clip mounts on both sides of the plastic as shown below. This cut is to ensure clearance of the light bar. Re-insert the (2) factory clips as shown below.

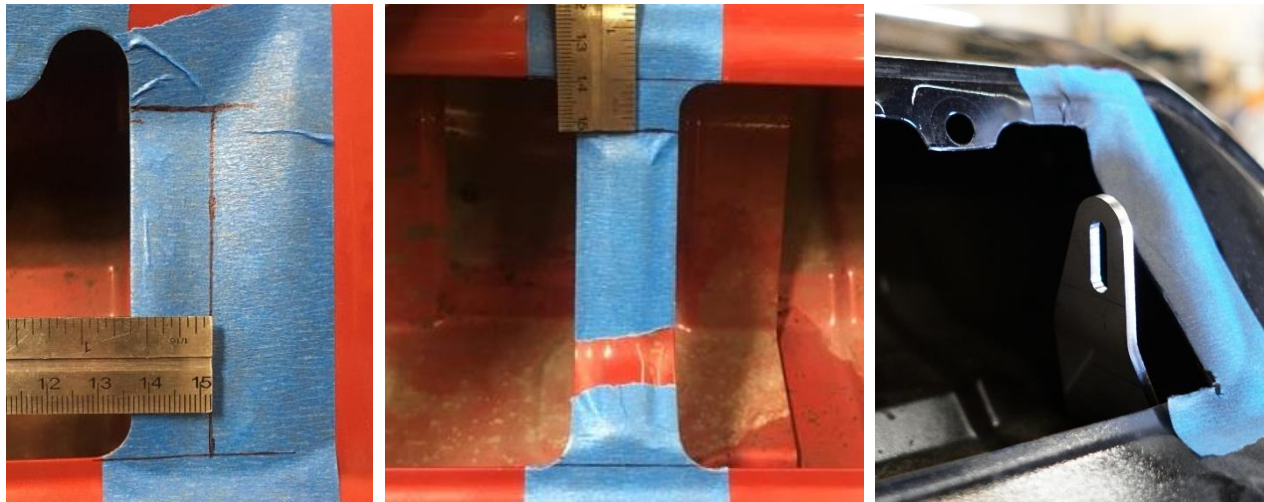


For questions or help with the installation, please call SDHQ Offroad @ 480-633-2929
 Mon.–Fri. 8:00am–5:30pm and Sat. 8:00am–3:30pm Arizona Time. www.sdhqoffroad.com

4. Remove all of the remaining factory clips from the plastic and replace with the provided 10-24 nutclips.

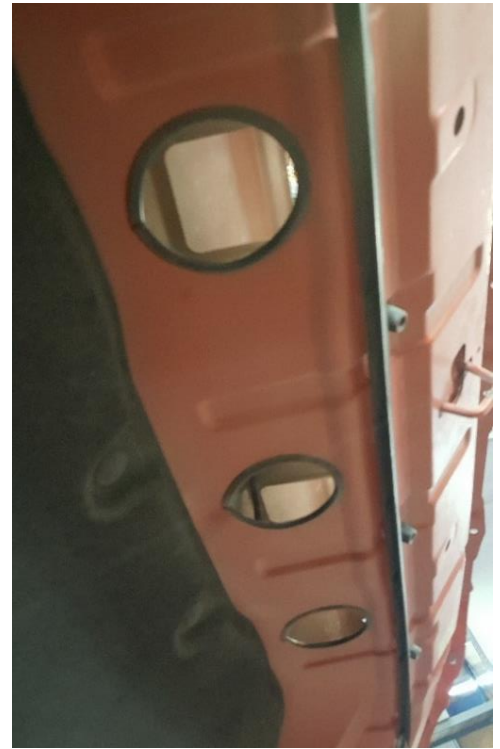


5. Trim the hood out 5/8" on each side as shown on the left. Cut the (3) center sheet metal supports as shown below. The outer (2) tabs will need to be trimmed as shown on the right.



6. With a 3 ¼" hole saw, drill 3 holes in the back side of the hood, one in the center and the other two 10 ¼" away from center. You can use a hole saw smaller, but a 3 ¼" hole saw is recommended so you can get the bolts in from the back side easier. Clean the holes and make sure they are free from any burs. Use the provided edge trim, cut to length and attach to the inner edge of each hole.

7. Using the provided template, drill the (2) ¼" holes under the hood for the brackets. Line up each edge as shown.



8. Loosely bolt your mounting brackets into your hood with the vertical edge facing forward and the backing plates in place.



10. Use the provided ¼"-20 x ½" bolts and flat washer to mount the light from the side.



11. Adjust the height and angle of the light by loosely setting the factory plastic over the light. Adjust the light as high as possible without hitting the top two metal tabs. For best results, angle 1° down.

12. Wire your light according to manufacturer's specifications.

13. Reinstall the factory plastic using the 3 factory 10mm bolts, and the 6 provided 10-24 Allen bolts.

Double check all hardware is installed correctly and tight

Re-torque ALL bolts after 100 miles



190 S McQueen Rd
Ste 109 Gilbert, AZ 85233
Phone: 480-633-2929 | Fax: 480-633-1791
www.sdhqoffroad.com

Follow us on:



Facebook



Instagram

For questions or help with the installation, please call SDHQ Offroad @ 480-633-2929
Mon.–Fri. 8:00am–5:30pm and Sat. 8:00am–3:30pm Arizona Time. www.sdhqoffroad.com