



**SDHQ Motorsports**  
190 S McQueen Rd  
Ste 109 Gilbert, AZ 85233  
[www.SDHQoffroad.com](http://www.SDHQoffroad.com)

## Product Packing List

**Product:** SDHQ-53-1202-XK70

**Description:** SDHQ Built 22+ Toyota Tundra Behind the Grill Light Bar Mount

- |   |                      |
|---|----------------------|
| _____ (1) Driver Side Light Mount                       | SDHQ-53-1202-XK70-A  |
| _____ (1) Passenger Side Light Mount                    | SDHQ-53-1202-XK70-B  |
| _____ (1) 3D Printed Shutter Motor Arm                  | SDHQ-00-1202-GS1     |
| _____ (1) 3D Printed Shutter Motor Arm                  | SDHQ-00-1202-GS2     |
| _____ (1) Hardware Package                              | SDHQ-53-1202-XK70-HP |
| _____ (2) Class 10.9 M6-1.0 x 20mm Hex Flange Head Bolt |                      |
| _____ (4) #10-24 x 1-3/4" S.S. Button Head Bolt         |                      |
| _____ (4) #10-24 S.S. Nylon Lock Nut                    |                      |
| _____ (8) #10 S.S. Washer                               |                      |
| _____ (2) 3/8" OD, #10 ID, 15/16" HT, Nylon Spacer      |                      |
| _____ (8) 1/2" OD, 1/4" ID, 1/8" HT, Nylon Spacer       |                      |
| _____ (5) 11" Zip Ties                                  |                      |

**\*\* Behind the Grill Dual 10" Light Bar Mount**

**SDHQ-53-1220-XK70**

**Inspected and Packaged By:** \_\_\_\_\_ **Date:** \_\_\_\_\_

## **\*\* Optional Accessories**

### **SDHQ Built 22+ Toyota Tundra Behind the Grill Dual 10" Light Bar Mount**

- Allows for the mounting of multiple dual 10" light bars.

### **SDHQ-53-1220-XK70**

_____	(1) Driver Side Center Light Mount	SDHQ-53-1220-XK70-A
_____	(1) Passenger Side Center Light Mount	SDHQ-53-1220-XK70-B
_____	(1) Hardware Package	SDHQ-53-1220-XK70-HP
_____	(3) Class 10.9 M6-1.0 x 20mm Hex Flange Head Bolt	
_____	(1) M6-1.0 Clip-On Nut	
_____	(4) 1/2" OD, 1/4" ID, 1/8" HT, Nylon Spacer	
_____	(2) Push-In Zip Ties	

### **SDHQ Built Universal Behind the Grill S2 Mount**

- Allows for the mounting of Baja Designs S2 lights on to the Behind the Grill mount allowing for additional options and lighting setups.

### **SDHQ-00-1202-S2**

_____	(2) S2 Mount	SDHQ-00-1202-S2-A
_____	(1) Hardware Package	SDHQ-00-1202-S2-HP
_____	(4) 1/4"-20 x 3/4" S.S Button Head Bolt	
_____	(4) 1/4"-20 S.S. Nylon Lock Nut	
_____	(8) 1/4" S.S. Washer	



SDHQ Motorsports  
190 S McQueen Rd  
Ste 109 Gilbert, AZ 85233  
[www.SDHQoffroad.com](http://www.SDHQoffroad.com)

## INSTALLATION INSTRUCTIONS

**Product:** SDHQ-53-1202-XK70

**Description:** SDHQ Built 22+ Toyota Tundra Behind the Grill Light Bar Mount



<u>Parts List</u>	<u>Hardware List</u>	<u>Required Tools</u>
(1) Driver Side Light Mount SDHQ-53-1202-XK70-A (1) Passenger Side Light Mount SDHQ-53-1202-XK70-B (1) 3D Printed Shutter Motor Arm SDHQ-00-1202-GS1 (1) 3D Printed Shutter Motor Arm SDHQ-00-1202-GS2 (1) Hardware Package SDHQ-53-1202-XK70-HP	(2) Class 10.9 M6-1.0 x 20mm Hex Flange Head Bolt (4) #10-24 x 1-3/4" S.S. Button Head Bolt (4) #10-24 S.S. Nylon Lock Nut (8) #10 S.S. Washer (2) 3/8" OD, #10 ID, 15/16" HT, Nylon Spacer (8) 1/2" OD, 1/4" ID, 1/8" HT Nylon Spacer (5) 11" Zip Ties	Plastic Pry Tools Clip Removal Tool 10mm, 14mm and 7/16" Sockets Ratchet 1/8" Hex Key 3/8" Wrench

### **Tech Notes**

Approx. Install Time: 1-1/2 Hour (Not including Wiring)

\*\*\*READ ALL INSTRUCTIONS THOROUGHLY FROM START TO FINISH BEFORE BEGINNING INSTALLATION! \*\*\*

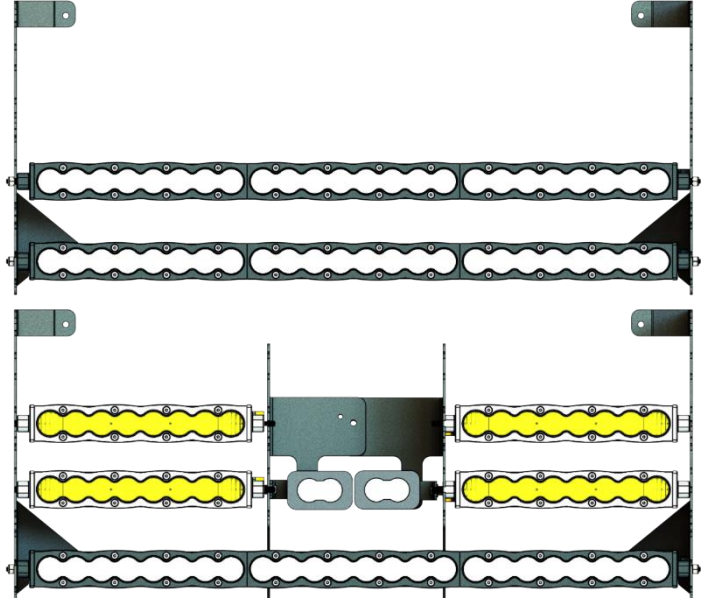
For questions or help with the installation, please email [help@sdhqoffroad.com](mailto:help@sdhqoffroad.com)

Store front hours: Mon. – Fri. 8:00am – 5:30pm and Sat. 9:00am – 2:00pm Arizona Time.

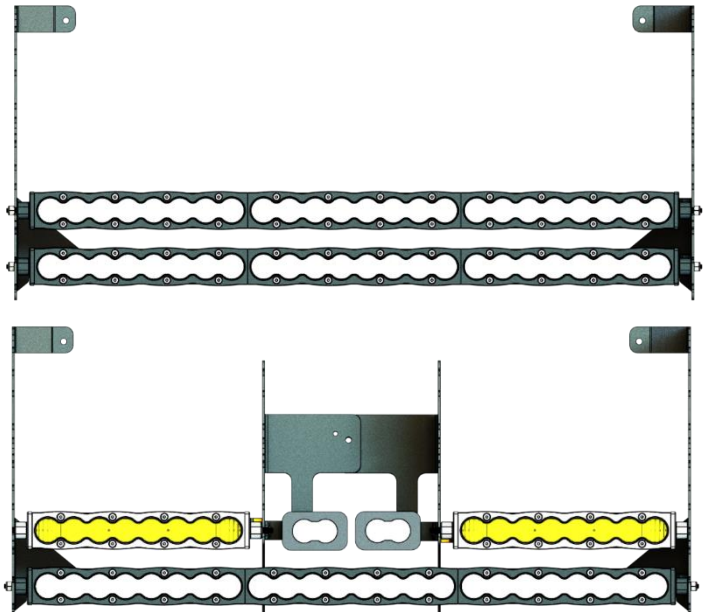


# Tundra Grill Setups

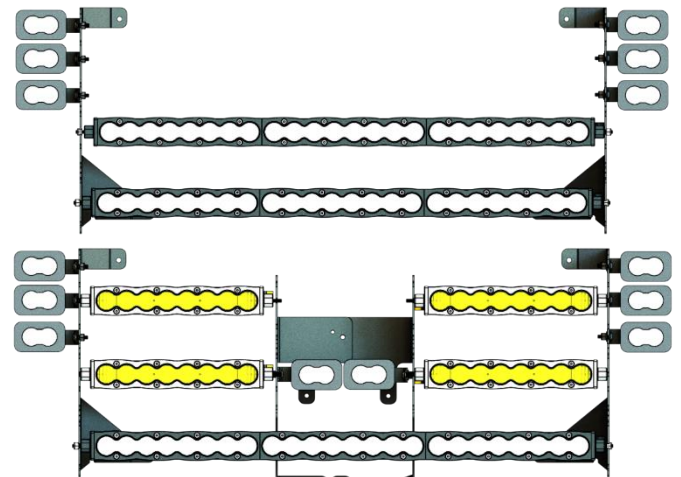
## SR, SRS and Limited



## TRD Sport/Option



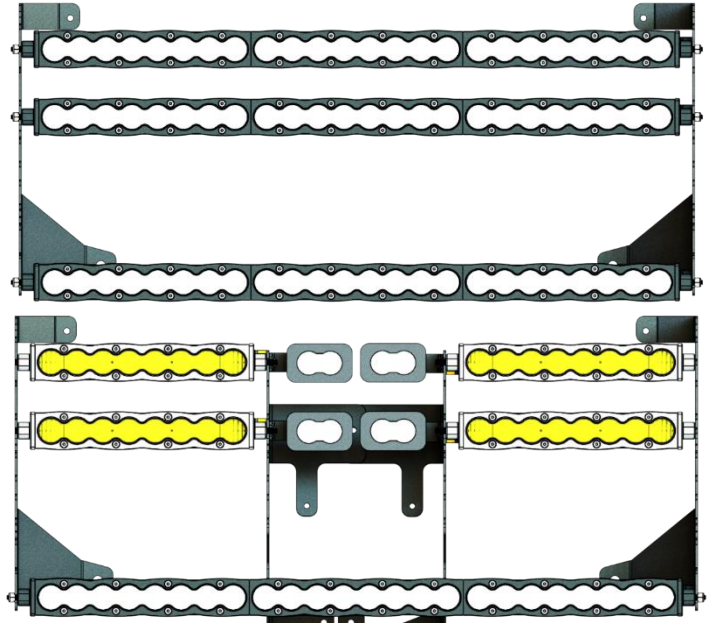
## Platinum/1794



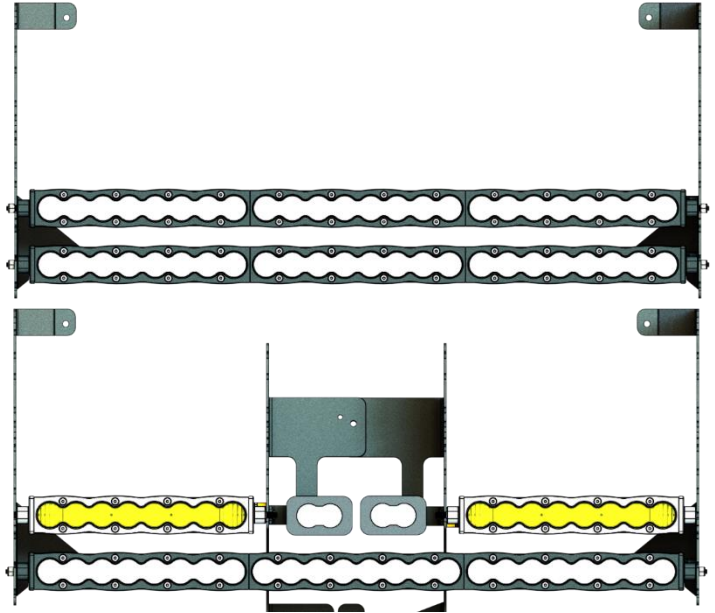
For questions or help with the installation, please email [help@sdhqoffroad.com](mailto:help@sdhqoffroad.com)  
Store front hours: Mon. – Fri. 8:00am – 5:30pm and Sat. 9:00am – 2:00pm Arizona Time.



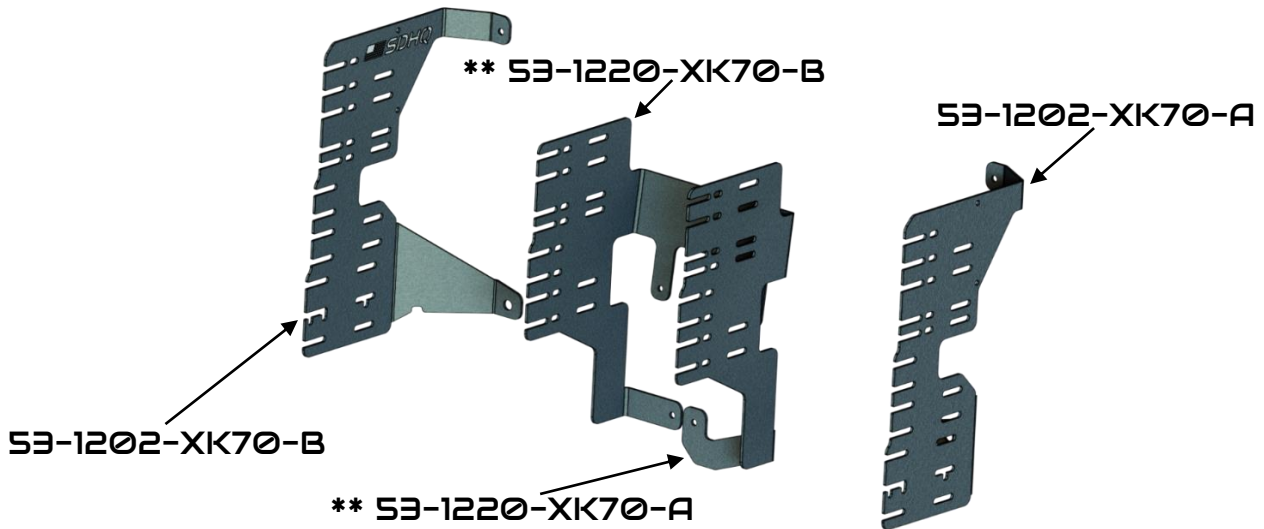
### TRD PRO



### Capstone



### SDHQ-53-1202-XK70 and SDHQ-53-1220-XK70



For questions or help with the installation, please email [help@sdhqoffroad.com](mailto:help@sdhqoffroad.com)  
Store front hours: Mon. – Fri. 8:00am – 5:30pm and Sat. 9:00am – 2:00pm Arizona Time.



## **Installation Instructions:**

1. Un-box your SDHQ 22+ Tundra Behind the Grill Light Bar Mount and lay out the parts. Verify all parts are present and familiarize yourself with all the parts.
2. Begin by opening the hood to allow access to the top of the front bumper and grill.
3. Using a 10mm socket and ratchet remove the (6) bolts attaching the fender flares to the front bumper and fender on the passenger side circled in red. Using a 10mm socket remove the bolt retaining the fender liner to the bumper it is below the fender flare bolts. Then be careful and unclip the fender flares by pulling outward, begin where the fender flare is attached to the bumper. Leave the flare on the fender as pictured.



4. Repeat the previous step on the driver side.
5. Using a 10 mm socket and ratchet remove the (4) bolts under the front of the bumper that attach it to the crash bar.



For questions or help with the installation, please email [help@sdhqoffroad.com](mailto:help@sdhqoffroad.com)  
Store front hours: Mon. – Fri. 8:00am – 5:30pm and Sat. 9:00am – 2:00pm Arizona Time.



6. Using a 10mm socket and ratchet remove the (4) bolts that attach the front bumper to the core support in front of the engine.



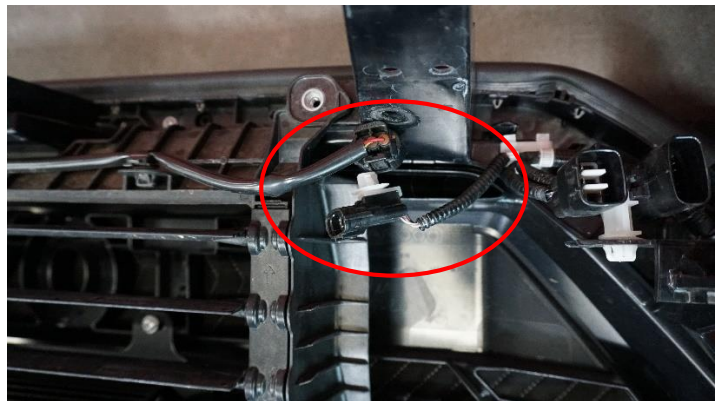
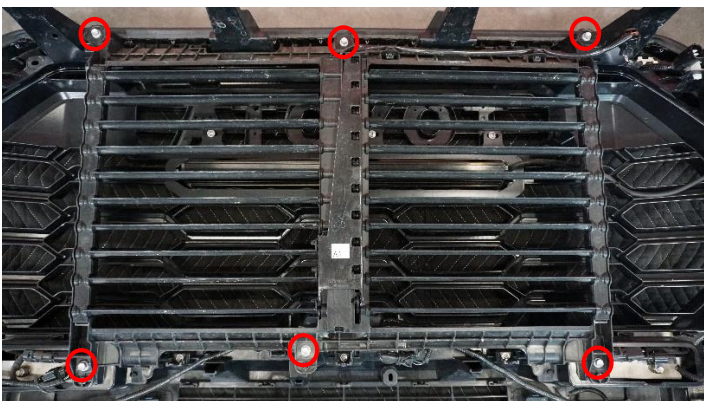
7. Using a plastic clip tool remove the (2) plastic clips near the headlights that attach the bumper. Disconnect the electrical connectors on both sides of the bumper located over the plastic clips.



8. Carefully remove the front bumper by pulling outward on the corner of the bumper cover. Recommend having another person to assist and setting on a blanket to prevent scratching.



9. Using a 10mm socket remove the (6) bolts holding the grill shutters, unclip the electrical connection and lift away the grill shutters. The (6) grill shutter bolt nut clips can now be pulled out and set aside as they will not be reused.

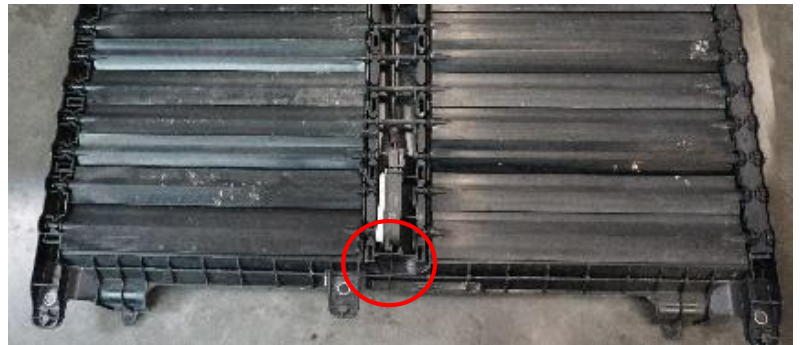




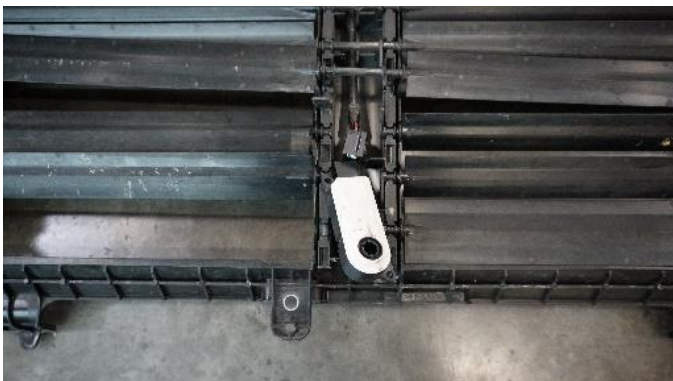
10. Using plastic pry tools remove the motor and wiring from the grill shutters, set aside the rest of the grill shutter assembly as it will not be reused. Begin by prying off the plastic edge trim circled in blue. Then remove the linkage bar in the middle circled in red, there are 5 blades that retain the linkage bar.



11. Once the linkage bar is removed, pry off the center plastic trim circled in blue. Now the motor is exposed, unclip the motor by prying on the mounting tab at the bottom of the grill shutters circled in red.

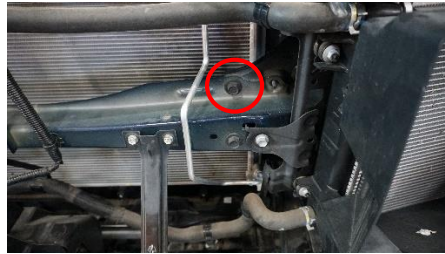
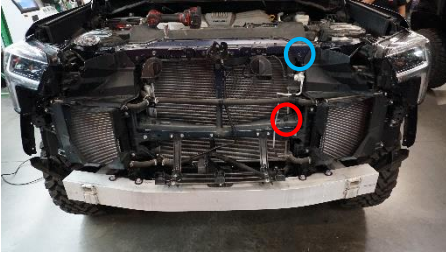


12. Remove the bottom left shutter blade to allow the shutter motor to be unplugged. Then remove the electrical connection for the grill shutter motor from the assembly and cut off the zip tie clips from the wiring.



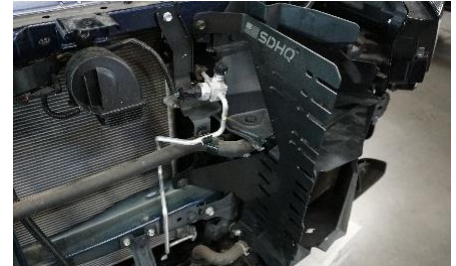


13. Using a 10mm socket remove the **top bolt** on the core support on driver side as shown below, also using a 14mm socket remove the **bottom bolt** on the core support as shown below.



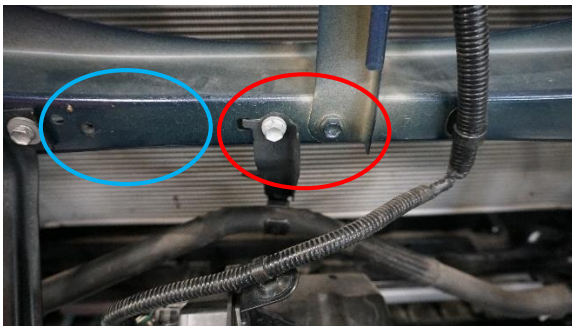
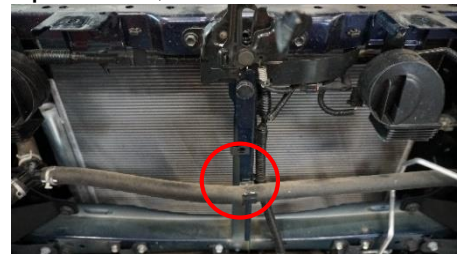
14. Carefully install the 53-1202-XK70-A driver side mount using the factory lower bolt and the supplied M6 flange bolt for the **top bolt**.

15. Repeat steps 13 and 14 to install the 53-1202-XK70-B passenger side mount.



16. If installing the BTG Dual 10" option (**53-1220-XK70**) follow steps 16-19, first install the supplied clip nut onto the center support of the core support.

17. Using a 10 mm socket remove the (2) bolts on the core support shown below and using a clip tool remove the wiring clip to the right of the bolts. If installing on a Hybrid Tundra remove the Speaker located in the blue circle.



18. Install the driver and passenger side center mounts using (2) of the supplied M6 bolts into the lower holes as shown below. If installing on a Hybrid Tundra install the speaker assembly onto the top hole and install using (1) of the supplied M6 bolts, for Non-Hybrid install supplied M6 bolt.

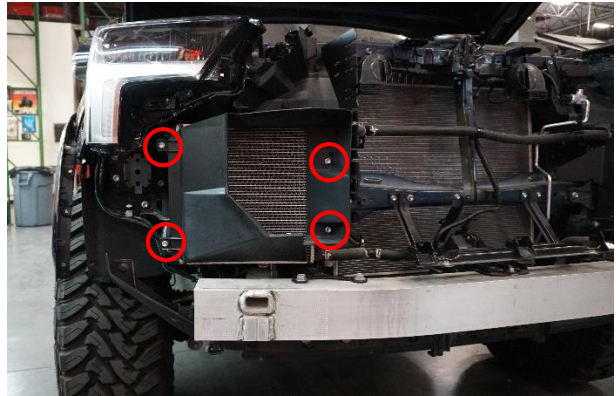
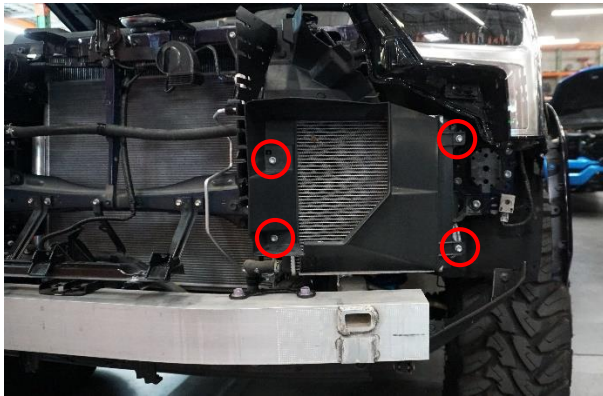




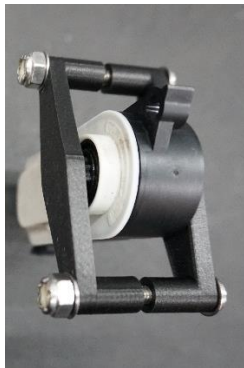
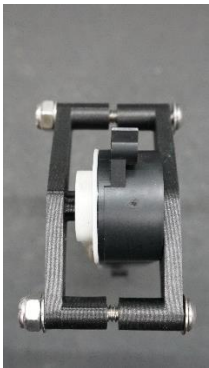
19. Remove the coolant hose clip from the core support and remove the clip from the hose. Use the provided push-in zip ties to secure the coolant hose.



20. Using a 10mm socket remove the (4) bolts that retain the intercooler shroud on the driver side and repeat for the passenger side (this will allow for easier installation of light bars).



21. Using a 1/8" hex key, 3/8" wrench and #10 supplied hardware, install the Shutter Motor Arms onto the Grill Shutter Motor. Install the Grill Shutter Motor to the outside of the passenger side mount using the remaining #10 hardware.





**22.** Route the wiring for the grill shutter motor with the main bumper connectors on the passenger side. Using the supplied zip ties secure the connector to the other connector wiring as shown, then route behind the core support to the grill shutter motor. Then connect the harness to the back of the grill shutter motor.



**23.** Install light bars, if using Baja Designs OnX6 light bars use the supplied Black Spacer on either end of the light bar to provide the correct spacing.



**24.** Pause to wire up lights. Recommended to test fit bumper to ensure proper light alignment.

**25.** Tighten all of the installed light bars and reinstall the intercooler shrouds and the front bumper, refer to previous steps if needed.

**26.** Enjoy your Behind the Grill Light Bar Mount for your 22+ Toyota Tundra.



For questions or help with the installation, please email [help@sdhqoffroad.com](mailto:help@sdhqoffroad.com)  
Store front hours: Mon. – Fri. 8:00am – 5:30pm and Sat. 9:00am – 2:00pm Arizona Time.

**\*\*\*Double check all hardware is installed correctly and tight\*\*\***

**\*\*\*Re-torque ALL bolts after 100 miles\*\*\***



190 S McQueen Rd  
Ste 109 Gilbert, AZ 85233  
[www.sdhqoffroad.com](http://www.sdhqoffroad.com)

Follow us on:



Facebook



Instagram

For questions or help with the installation, please email [help@sdhqoffroad.com](mailto:help@sdhqoffroad.com)  
Store front hours: Mon. – Fri. 8:00am – 5:30pm and Sat. 9:00am – 2:00pm Arizona Time.