



SDHQ Motorsports
190 S McQueen Rd
Ste 109 Gilbert, AZ 85233
www.SDHQoffroad.com

Product Packing List

Product: SDHQ-53-1143-XK70

Description: 2022+ Toyota Tundra Switch Pros Power Module/REDARC Solar Regulator Mount

_____ (1) Power Module/Solar Regulator Mount	53-1143-XK70-A
_____ (1) Battery Hold Down	53-1143-XK70-B
_____ (1) Hardware Package	53-1143-XK70-C
_____ (4) #8 - 32 x 3/8" S.S. Button Head Bolts	
_____ (4) #8 - 32 S.S. Hex Nuts	
_____ (4) .304 x .169 x .032 Small Diameter Washers	

Inspected and Packaged By: _____ Date: _____

For questions or help with the installation, please email help@sdhqoffroad.com
Store front hours: Mon. – Fri. 8:00am – 5:30pm and Sat. 9:00am – 2:00pm Arizona Time.



SDHQ Motorsports
 190 S McQueen Rd
 Ste 109 Gilbert, AZ 85233
www.SDHQoffroad.com

INSTALLATION INSTRUCTIONS

Product: *SDHQ-53-1143-XK70*

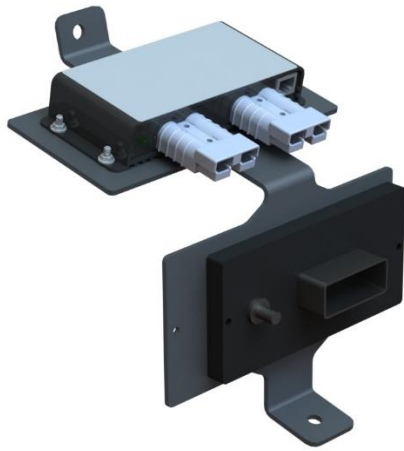
Description: 2022+ Toyota Tundra Switch Pros Power Module/REDARC Solar Regulator Mount



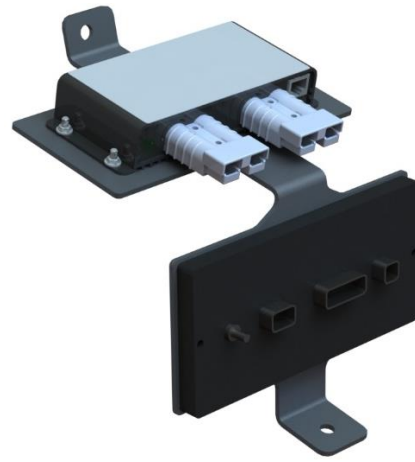
<u>Parts List</u>	<u>Hardware List</u>	<u>Required Tools</u>
(1) SDHQ Power Module/Regulator Mount SDHQ-53-1143-XK70-A 1) SDHQ Battery Hold Down SDHQ-53-1143-XK70-B 1) Hardware Package SDHQ-53-1143-XK70-C	(4) #8 - 32 x 3/8" S.S. Button Head Bolts (4) #8 - 32 S.S. Hex Nuts (4) .304 x .169 x .032 Small Diameter Washers	12mm Socket Ratchet 3/32" Hex Bit/Allen Key
Tech Notes		
Fits Switch Pros 9100 and RCR12 Models. Uses Switch Pros provide hardware for mounting. Fits REDARC 10A, 20A and 30A solar regulators. Use anti-seize for all S.S. hardware. Approx. Install Time: 1 Hour		

READ ALL INSTRUCTIONS THOROUGHLY FROM START TO FINISH BEFORE BEGINNING INSTALLATION!

For questions or help with the installation, please email help@sdhqoffroad.com
 Store front hours: Mon. – Fri. 8:00am – 5:30pm and Sat. 9:00am – 2:00pm Arizona Time.



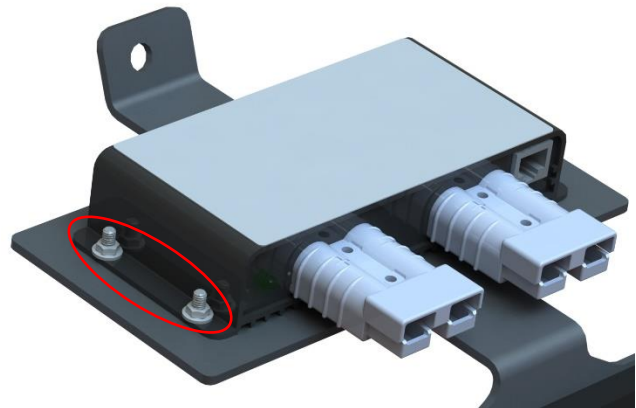
Switch Pros 9100



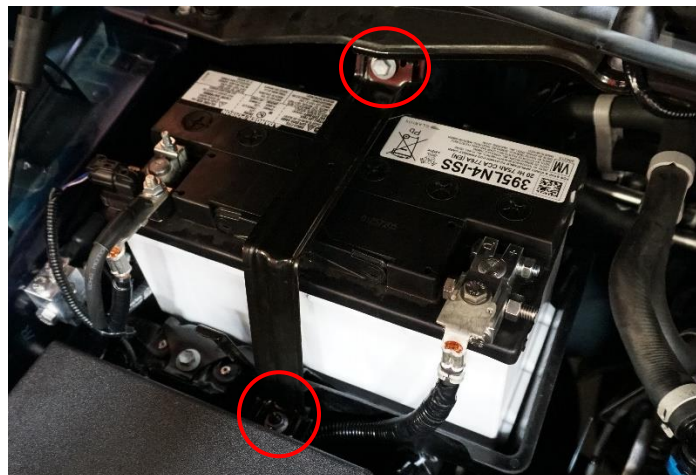
Switch Pros RCR 12

Installation Instructions:

1. Place the Switch Pros module onto the mount and secure using the hardware Switch Pros provided. For REDARC Solar Recharger mounting use the supplied (4) #8 bolts, washers and nuts. Install the nuts and washers on the top side of the mount as shown below.

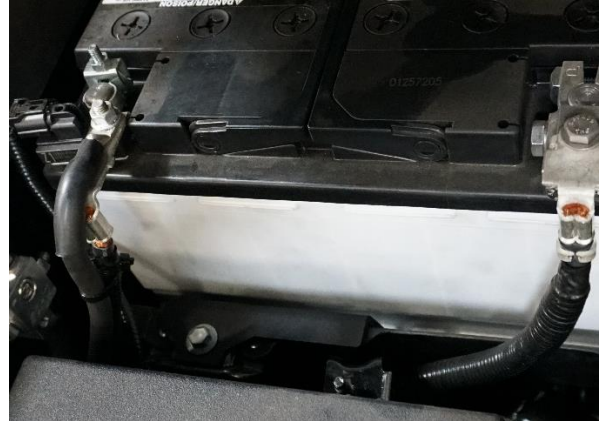
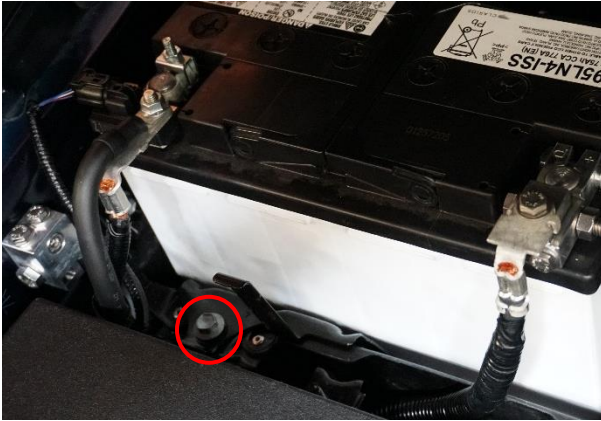


2. Unbolt the factory battery cross over by removing the top 12mm bolt and the bottom 12mm nut shown below.

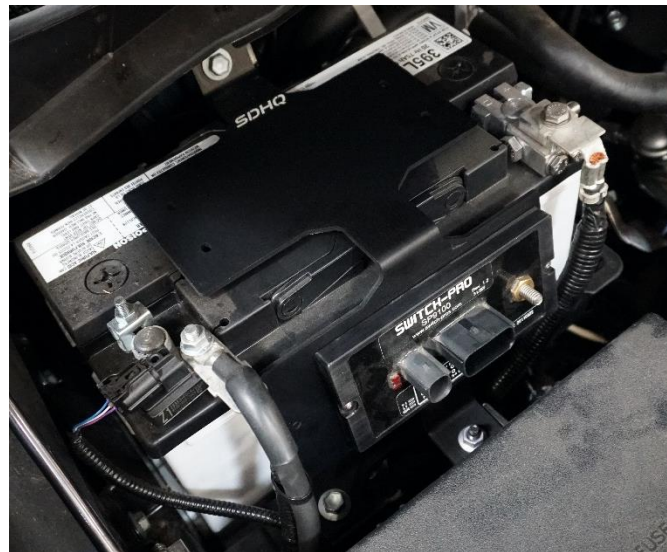


For questions or help with the installation, please email help@sdhqoffroad.com
Store front hours: Mon. – Fri. 8:00am – 5:30pm and Sat. 9:00am – 2:00pm Arizona Time.

3. Next replace your factory battery hold down by removing the 12mm bolt and adding the supplied battery hold down. Loosely bolt the hold down in allowing for battery adjustment.



4. Set your SDHQ mount in place of the factory cross over and reinstall the 12mm nut and bolt removed in step 2. Adjust battery alignment with mount as desired then tighten the battery hold down in place. Your Switch Pros Module/REDARC Regulator can now be wired.



Switch Pros Wiring:

Once the Switch-Pros power module is mounted, but BEFORE it is connected to anything else, do the following:

1. Reinstall battery (if battery was removed during installation), and secure factory connections. Start vehicle and confirm that battery is properly installed, connected and grounded.
2. Connect the Switch-Pros Ground wire lug to the negative terminal on the battery (grounding elsewhere will not properly filter noise and will void your product warranty).
3. Plug the 16-pin harness into the power module; be sure it locks in.
4. Connect the red Battery Cable to the positive terminal on the battery. Tighten down both ends, to prevent lug from rotating and possibly causing friction or spark

For questions or help with the installation, please email help@sdhqoffroad.com
Store front hours: Mon. – Fri. 8:00am – 5:30pm and Sat. 9:00am – 2:00pm Arizona Time.

*****Double check all hardware is installed correctly and tight*****

*****Re-torque ALL bolts after 100 miles*****



190 S McQueen Rd
Ste 109 Gilbert, AZ 85233
www.sdhqoffroad.com

Follow us on:



Facebook



Instagram

For questions or help with the installation, please email help@sdhqoffroad.com
Store front hours: Mon. – Fri. 8:00am – 5:30pm and Sat. 9:00am – 2:00pm Arizona Time.