



SDHQ Motorsports
190 S McQueen Rd
Ste 109 Gilbert, AZ 85233
Phone: 480-633-2929

Product Packing List

Product: SDHQ-53-1141-G3

Description: 2014-2021 Tundra Switch Pros Power
Module Mount 9100/RCR-Force 12

_____ (1) SDHQ Power Module Mount	SDHQ-53-1141-G3-A
_____ (1) Hardware Package	SDHQ-53-1141-G3-B
_____ (2) 1/4" - 20 x 3/4" S.S. Button Head Bolts	
_____ (2) 1/4" S.S. Flat Washers	
_____ (2) 1/4" - 20 x 17/32" Clip-on Barrel Nuts	

Inspected and Packaged By: _____ **Date:** _____

For questions or help with the installation, please call SDHQ Offroad @ 480-633-2929
Mon.-Fri. 8:00am-5:30pm and Sat. 8:00am-3:30pm Arizona Time. www.sdhqoffroad.com

**For questions or help with the installation, please call SDHQ Offroad @ 480-633-2929
Mon.–Fri. 8:00am–5:30pm and Sat. 8:00am–3:30pm Arizona Time. www.sdhqoffroad.com**



SDHQ Motorsports
 190 S McQueen Rd
 Ste 109 Gilbert, AZ 85233
 Phone: 480-633-2929

INSTALLATION INSTRUCTIONS

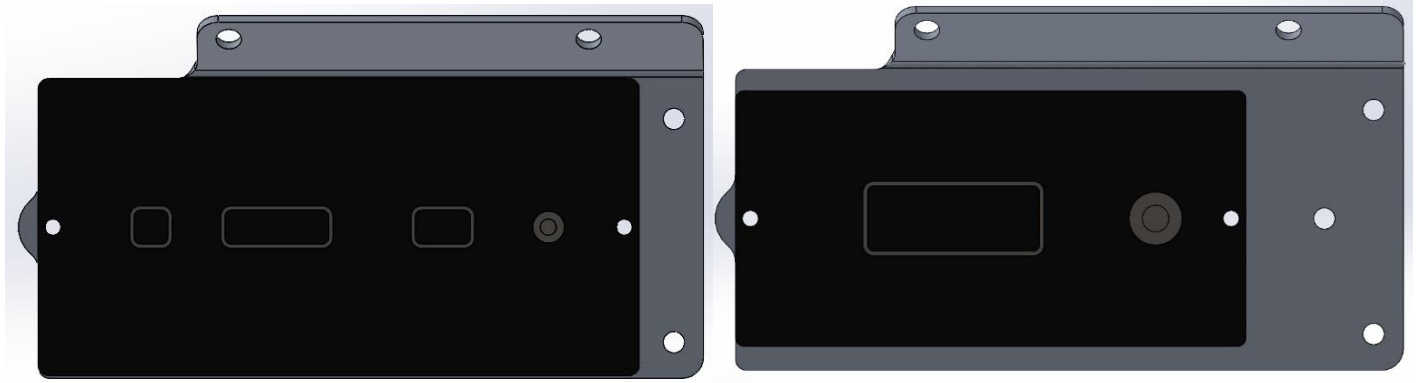
Product: SDHQ-53-1141-G3

Description: 2014-2021 Tundra Switch Pros Power Module Mount 9100/RCR-Force 12



<u>Parts List</u>	<u>Hardware List</u>	<u>Required Tools</u>
<p><u>Standard Mounting Kit:</u> (1) SDHQ Power Module Mount SDHQ-53-1141-G3-A (1) Mounting Plate Hardware Package SDHQ-53-1141-G3-B</p>	<p><u>Mounting Plate Hardware Package:</u> SDHQ-53-1141-G3-B (2) 1/4" - 20 x 3/4" S.S. Button Head Bolts (2) 1/4" S.S. Flat Washers (2) 1/4"-20 Clip-on Barrel Nuts</p>	<p>1/8" Allen Wrench 4mm Allen Wrench Open Barrel Crimping Tool Wire Strippers Ratchet Flat head screw driver</p>
<u>Tech Notes</u>		
<p>Use anti-seize on all stainless steel hardware. Make sure terminal crimps are tight to avoid damage and fire hazard. When installing the Power Module Mount, it may be easier to remove the battery. **Approx install time = 1 hour (not including wiring)**</p>		

For questions or help with the installation, please call SDHQ Offroad @ 480-633-2929
 Mon.-Fri. 8:00am-5:30pm and Sat. 8:00am-3:30pm Arizona Time. www.sdhqoffroad.com



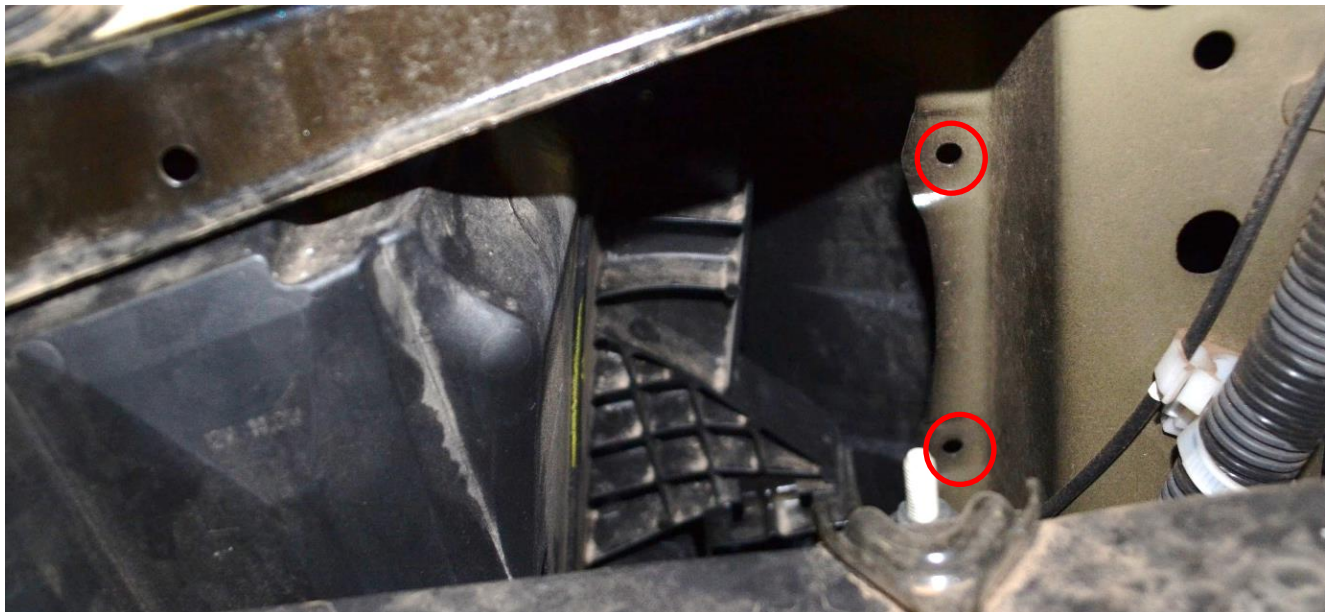
*****READ ALL INSTRUCTIONS THOROUGHLY FROM START TO FINISH BEFORE BEGINNING INSTALLATION! *****

Installation Instructions:

1. Place the Switch Pros Power Module on top of the SDHQ Switch Pros Power Module Mount as pictured. Using the included Switch Pros hardware, bolt the Power Module to the Mount. (Shown with the Switch Pro 9100 Power Module)



2. It is not completely necessary, but removing the battery may help with ease of installation. On your core support, locate the two holes circled below in front of the battery, to the inside of the driver side headlight.



For questions or help with the installation, please call SDHQ Offroad @ 480-633-2929
Mon.–Fri. 8:00am–5:30pm and Sat. 8:00am–3:30pm Arizona Time. www.sdhqoffroad.com

*****Double check all hardware is installed correctly and tight*****

*****Re-torque ALL bolts after 100 miles*****



190 S McQueen Rd
Ste 109 Gilbert, AZ 85233
Phone: 480-633-2929 | Fax: 480-633-1791
www.sdhqoffroad.com

Follow us on:



Facebook



Instagram

For questions or help with the installation, please call SDHQ Offroad @ 480-633-2929
Mon.–Fri. 8:00am–5:30pm and Sat. 8:00am–3:30pm Arizona Time. www.sdhqoffroad.com