



**SDHQ Motorsports**  
**190 S McQueen Rd**  
**Ste 109 Gilbert, AZ 85233**  
**Phone: 480-633-2929**

---

## Product Packing List

**Product:** SDHQ-53-1140-G3

**Description:** **14-20 Tundra Switch Pros Power Module Mount**

_____ (1) SDHQ Power Module Mount Plate	SDHQ-53-1140-G3-A
_____ (1) Hardware Package	SDHQ-53-1140-G3-B
_____ (2) 1/4" - 20 x 3/4" S.S. Button Head Bolts	
_____ (2) 1/4" S.S. Flat Washers	
_____ (2) 1/4" - 20 x 17/32" Clip-on Barrel Nuts	

**Inspected and Packaged By:** \_\_\_\_\_ **Date:** \_\_\_\_\_

For questions or help with the installation, please call SDHQ Offroad @ 480-633-2929  
Mon.-Fri. 8:00am-5:30pm and Sat. 8:00am-3:30pm Arizona Time. [www.sdhqoffroad.com](http://www.sdhqoffroad.com)





SDHQ Motorsports  
 190 S McQueen Rd  
 Ste 109 Gilbert, AZ 85233  
 Phone: 480-633-2929

## INSTALLATION INSTRUCTIONS

**Product:** SDHQ-53-1140-G3

**Description:** 14-20 Tundra Switch Pros Power Module Mount



<u>Parts List</u>	<u>Hardware List</u>	<u>Required Tools</u>
<p><b><u>Standard Mounting Kit:</u></b>            (1) SDHQ Power Module Mount Plate            SDHQ-53-1140-G3-A            (1) Mounting Plate Hardware Package            SDHQ-53-1140-G3-B</p> <p><b><u>Optional Relay Pack Upgrade*:</u></b>            (1) Sealed Relay Module Package            SDHQ-02-1141-U1</p>	<p><b><u>Mounting Plate Hardware Package:</u></b>  <b>SDHQ-53-1140-G3-B</b>            (2) 1/4" - 20 x 3/4" S.S. Button Head Bolts            (2) 1/4" S.S. Flat Washers            (2) 1/4"-20 Clip-on Barrel Nuts</p>	<p>1/8" Allen Wrench            4mm Allen Wrench            Open Barrel Crimping Tool            Wire Strippers            10mm socket and ratchet            Flat head screw driver</p>
<u>Tech Notes</u>		
<p>Use anti-seize on all stainless steel hardware.            Make sure terminal crimps are tight to avoid damage and fire hazard.            When installing the Power Module Mount, it may be easier to remove the battery.            *Optional Relay Pack Upgrade is purchased separately.            **Approx install time = 1 hour (not including wiring)**</p>		

For questions or help with the installation, please call SDHQ Offroad @ 480-633-2929  
 Mon.-Fri. 8:00am-5:30pm and Sat. 8:00am-3:30pm Arizona Time. [www.sdhqoffroad.com](http://www.sdhqoffroad.com)



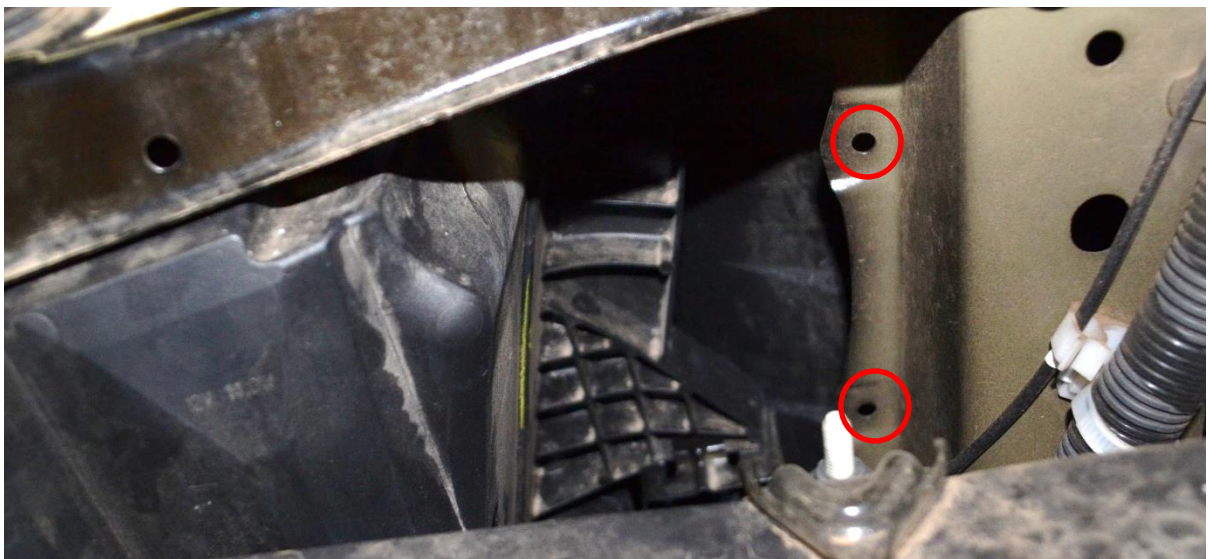
**\*\*\*READ ALL INSTRUCTIONS THOROUGHLY FROM START TO FINISH BEFORE BEGINNING INSTALLATION! \*\*\***

### **Installation Instructions:**

1. Place the Switch Pros Power Module on top of the SDHQ Switch Pros Power Module Mount as pictured. Using the Switch Pros included hardware, bolt the Power Module to the Mount.



2. It is not completely necessary, but removing the battery may help with ease of installation. On your core support, locate the two holes circled below from inside the engine bay.



For questions or help with the installation, please call SDHQ Offroad @ 480-633-2929  
Mon.–Fri. 8:00am–5:30pm and Sat. 8:00am–3:30pm Arizona Time. [www.sdhqoffroad.com](http://www.sdhqoffroad.com)

3. Place the (2) Clip on Barrel Nuts over those holes with the threaded ended pointing towards the front of the truck.



4. Place the Switch Pros Power Module and Mount over the Barrel Nuts and bolt into place with the 1/4" - 20 x 3/4" bolts and 1/4" washers as pictured. The Power Module can now be wired up.



### **Wiring:**

Once the Switch-Pros power module is mounted, but BEFORE it is connected to anything else, do the following:

1. Reinstall battery (if battery was removed during installation), and secure factory connections. Start vehicle and confirm that battery is properly installed, connected and grounded.
2. Connect the Switch-Pros Ground wire lug to the negative terminal on the battery (grounding elsewhere will not properly filter noise and will void your product warranty).
3. Plug the 16-pin harness into the power module; be sure it locks in.
4. Connect the red Battery Cable to the positive terminal on the battery. Tighten down both ends, to prevent lug from rotating and possibly causing friction or spark.

**\*\*\*Double check all hardware is installed correctly and tight\*\*\***

**\*\*\*Re-torque ALL bolts after 100 miles\*\*\***



190 S McQueen Rd  
Ste 109 Gilbert, AZ 85233  
Phone: 480-633-2929 | Fax: 480-633-1791  
[www.sdhqoffroad.com](http://www.sdhqoffroad.com)

Follow us on:



Facebook



Instagram

For questions or help with the installation, please call SDHQ Offroad @ 480-633-2929  
Mon.–Fri. 8:00am–5:30pm and Sat. 8:00am–3:30pm Arizona Time. [www.sdhqoffroad.com](http://www.sdhqoffroad.com)