



SDHQ Motorsports
190 S McQueen Rd
Ste 109 Gilbert, AZ 85233
www.SDHQoffroad.com

Product Packing List

Product: *SDHQ-53-1139-G3-(SOS)*

Description: **2014-21 Toyota Tundra Switch Pros RCR-12
Overhead Keypad Mount**

_____ (1) SDHQ Tundra Switch Pros OH Keypad Mount

- Without SOS
- With SOS

SDHQ-53-1139-G3

SDHQ-53-1139-G3-SOS

_____ (1) Hardware Package

SDHQ-53-1139-G3-HP

_____ (4) #6 - 32 x 3/16" S.S. Button Head Bolts

Inspected and Packaged By: _____ Date: _____

For questions or help with the installation, please email help@sdhqoffroad.com
Store front hours: Mon. – Fri. 8:00am – 5:30pm and Sat. 9:00am – 2:00pm Arizona Time.



SDHQ Motorsports
 190 S McQueen Rd
 Ste 109 Gilbert, AZ 85233
www.SDHQoffroad.com

INSTALLATION INSTRUCTIONS

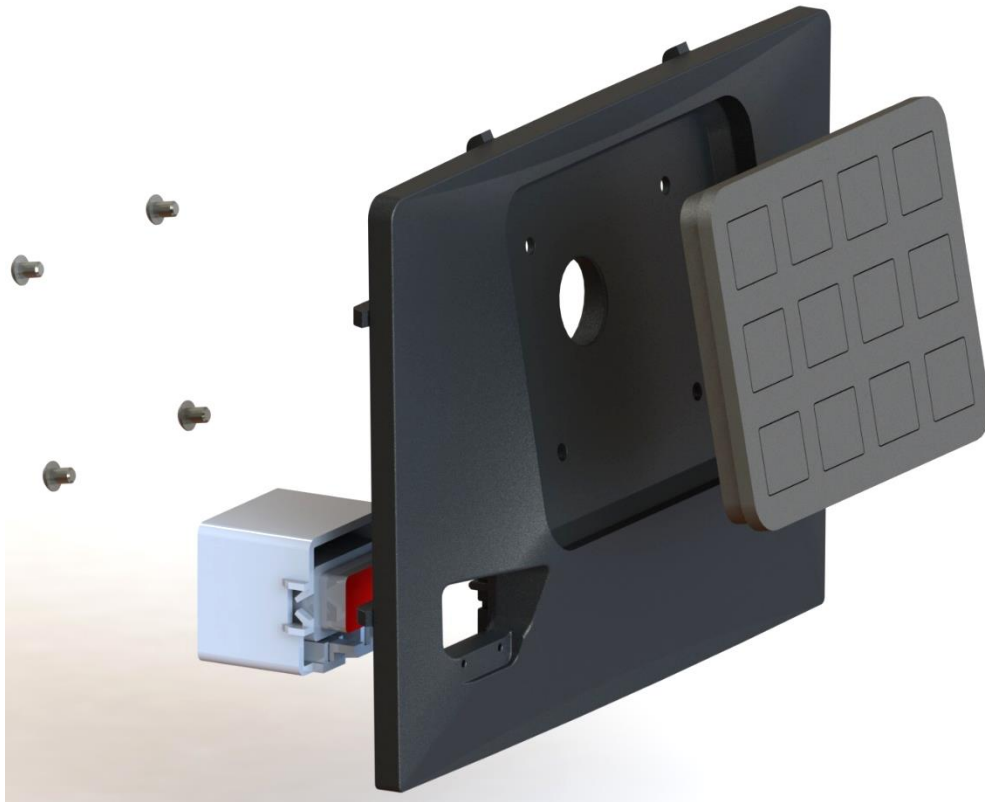
Product: *SDHQ-53-1139-G3(-SOS)*

Description: 2014-21 Toyota Tundra Switch Pros RCR-12 Overhead Keypad Mount



Parts List	Hardware List	Required Tools
(1) SDHQ Tundra Switch Pros OH Keypad Mount ○Without SOS SDHQ-53-1139-G3 ○With SOS SDHQ-53-1139-G3-SOS (1) Hardware Package SDHQ-53-1139-G3-HP	(4) #6 – 32 x 3/16” S.S. Button Head Bolts	Plastic Panel Remover 5/64” Hex Drive Thread Locker (Medium)
Tech Notes		
SDHQ-53-1139-G3(-SOS) panels only fits the 2014-21 Tundra without a sunroof. **Approx install time = 15 Minutes (not including wiring)**		

For questions or help with the installation, please email help@sdhqoffroad.com
 Store front hours: Mon. – Fri. 8:00am – 5:30pm and Sat. 9:00am – 2:00pm Arizona Time.

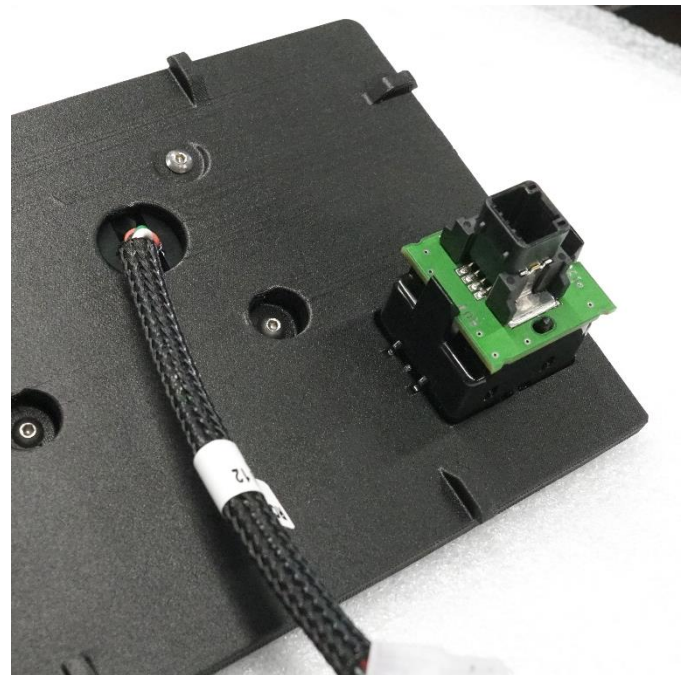
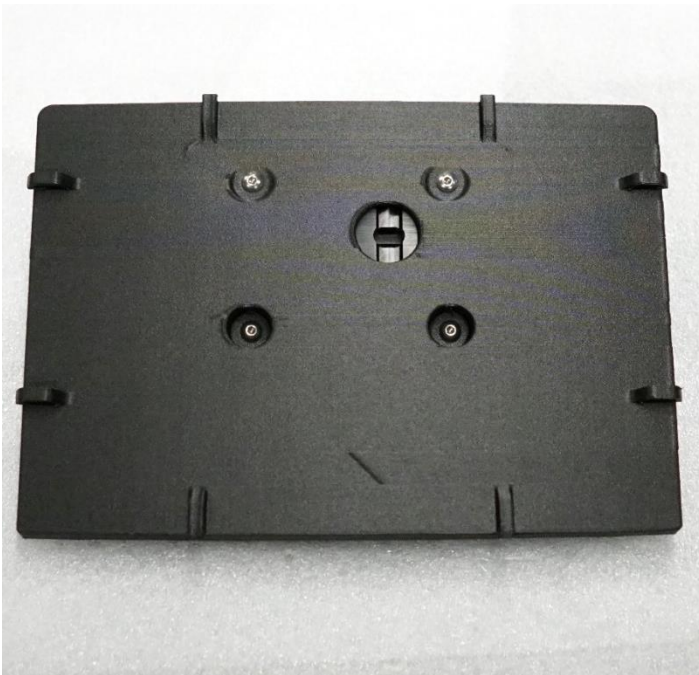


Installation Instructions:

1. Unbox your SDHQ Tundra Switch Pros RCR-Force-12 Overhead Keypad Mount and hardware.
2. **Remove the factory overhead panel.** Using a plastic panel removal tool, remove the square plastic panel. Pry along the edges of the panel, being careful not to scratch the plastic. If applicable, disconnect the SOS button from the wiring and then remove it from the panel.



- 3. Installing the Keypad.** Place the RCR-Touch cover onto the RCR-Force-12 Keypad. Feed the wire harness through the center hole in the SDHQ Overhead Keypad Mount and insert the Keypad. Secure the Keypad with the supplied (4) #6 Button Head Bolts and thread locker. Install the SOS button as pictured, if applicable.



- 4.** Once finished and wiring has been ran, install the panel in the reverse order as removed. The new panel is a tight fit, it may help to use your panel removal tool to guide the edges in place. Enjoy your new SDHQ Built Switch Pros RCR-Force-12 Overhead Console Mount!



*****Double check all hardware is installed correctly and tight*****

*****Re-torque ALL bolts after 100 miles*****



190 S McQueen Rd
Ste 109 Gilbert, AZ 85233
www.sdhqoffroad.com

Follow us on:



Facebook



Instagram

For questions or help with the installation, please email help@sdhqoffroad.com
Store front hours: Mon. – Fri. 8:00am – 5:30pm and Sat. 9:00am – 2:00pm Arizona Time.