



SDHQ Motorsports
190 S McQueen Rd
Ste 109 Gilbert, AZ 85233
Phone: 480-633-2929

Product Packing List

Product: SDHQ-53-1110-G3

Description: 14-21 Tundra Center Support Kit

_____	(1) Center Support Bracket	SDHQ-53-1110-G3-A
_____	(1) Latch Support Bracket	SDHQ-53-1110-G3-B
_____	(1) Grille Support Bracket	SDHQ-53-1110-G3-C
_____	(2) Stainless Steel Horn Extension Bracket	SDHQ-53-1110-G3-D
_____	(1) Hardware Package	SDHQ-53-1110-G3-E
_____	(2) M8 - 1.25 x 20mm Button Head Bolts	
_____	(2) 5/16" S.S. Washers	
_____	(1) M6 - 1.0 x 12mm Button Head Bolts	
_____	(6) 1/4" - 20 x 3/4" S.S. Hex Head Bolts	
_____	(12) 1/4" S.S. Washers	
_____	(6) 1/4" - 20 S.S. Lock Nuts	
_____	(7) 8" Zip Ties	
_____	(1) 36" 16 GA Ground Wire	
_____	(2) 1/4" Ring Terminals	
_____	(2) 5/16" Ring Terminals	
_____	(1) Latch Spring	
_____	(1) 3" of 1/4" Heat Shrink	

Inspected and Packaged By: _____ Date: _____

For questions or help with the installation, please call SDHQ Offroad @ 480-633-2929
Mon.-Fri. 8:00am-5:30pm and Sat. 8:00am-3:30pm Arizona Time. www.sdhqoffroad.com

**For questions or help with the installation, please call SDHQ Offroad @ 480-633-2929
Mon.–Fri. 8:00am–5:30pm and Sat. 8:00am–3:30pm Arizona Time. www.sdhqoffroad.com**



SDHQ Motorsports
 190 S McQueen Rd
 Ste 109 Gilbert, AZ 85233
 Phone: 480-633-2929

INSTALLATION INSTRUCTIONS

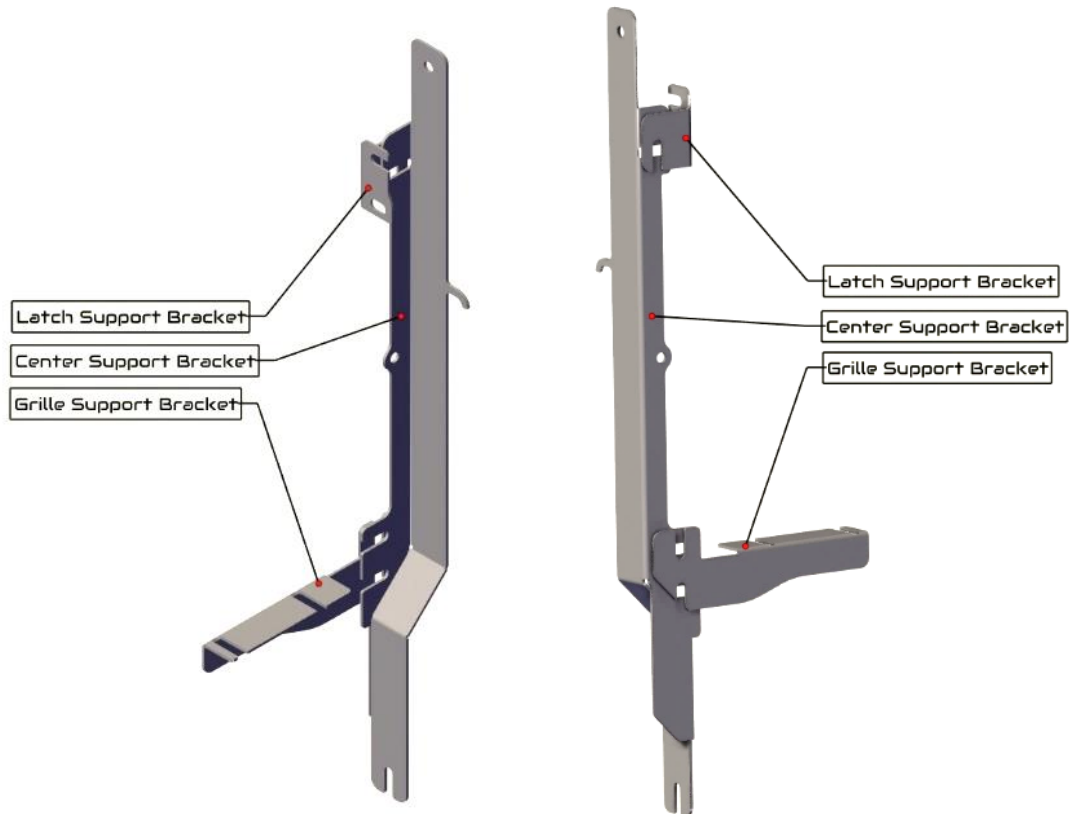
Product: *SDHQ-53-1110-G3*

Description: 14-21 Tundra Center Support Kit



Parts List	Hardware List	Required Tools
(1) Center Support SDHQ-53-1110-G3-A (1) Latch Support SDHQ-53-1110-G3-B (1) Grille Support SDHQ-53-1110-G3-C (2) S.S. Horn Extension SDHQ-53-1110-G3-D (1) Hardware package SDHQ-53-1110-G3-E	(2) M8 – 1.25 x 20mm Button Head Bolts (2) 5/16" S.S. Washers (1) M6 – 1.0 x 20mm Button Head Bolt (6) 1/4" – 20 x 3/4" S.S. Hex Head Bolts (12) 1/4" S.S. Washers (6) 1/4" – 20 S.S. Lock nuts (7) 8" Zip Ties (1) 36" 16 GA Ground Wire (2) 1/4" Ring Terminals (2) 5/16" Ring Terminals (1) Latch Spring (1) 3" of 1/4" Heat Shrink	10mm, 12mm and 7/16" sockets Ratchet 10mm, 13mm and 7/16" wrench 4mm and 5mm Allen wrench Medium Strength Loctite Flat head screw driver
Tech Notes		
Use Medium Strength Loctite on all nuts. Intended use with SDHQ Behind the Grille 40" Light Mount (SDHQ-53-1202-G3). This kit is only required if running an S8 in the top slot or and Onx6. Trimming of the TRD Pro Grille is required if running a light bar in the top mounting slot. Rerouting/removal of the transmission cooler bracket is required if running an Onx6.		

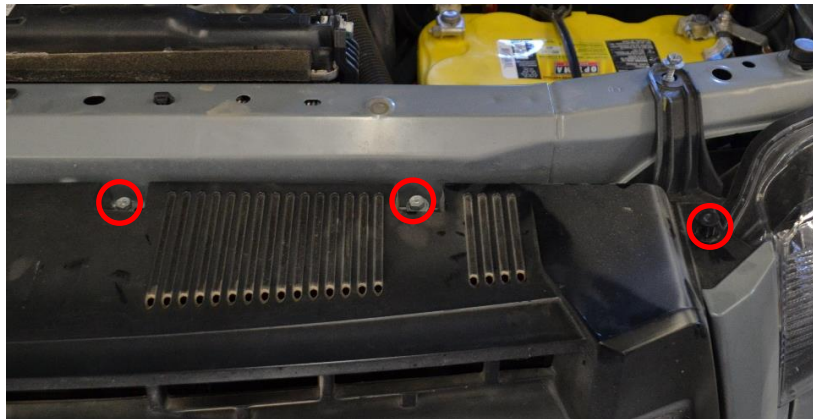
For questions or help with the installation, please call SDHQ Offroad @ 480-633-2929
 Mon.–Fri. 8:00am–5:30pm and Sat. 8:00am–3:30pm Arizona Time. www.sdhqoffroad.com



*****READ ALL INSTRUCTIONS THOROUGHLY FROM START TO FINISH BEFORE BEGINNING INSTALLATION! *****

Installation Instructions:

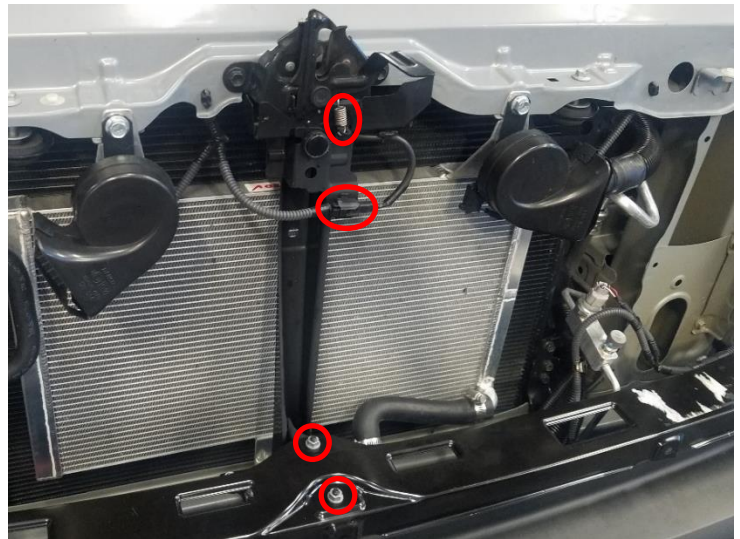
1. **Remove the Grille.** Using a 10mm socket and ratchet, remove the (4) screws on top of the grille. There is also (2) clips that will need to be removed with a flat head screw driver.



2. The grille is now ready to be removed. There are (2) clips on each side of the grille underneath each head light and (3) clips along the bottom of the grille. Start on the driver side and grab underneath the grille below the headlight and pull out to separate the grille from the body. The grille will need to be pushed down towards the ground to release the second clip underneath the headlight. Work your way along the bottom towards the passenger side and release the bottom (3) clips. Release the last (2) clips on the passenger side underneath the headlight.

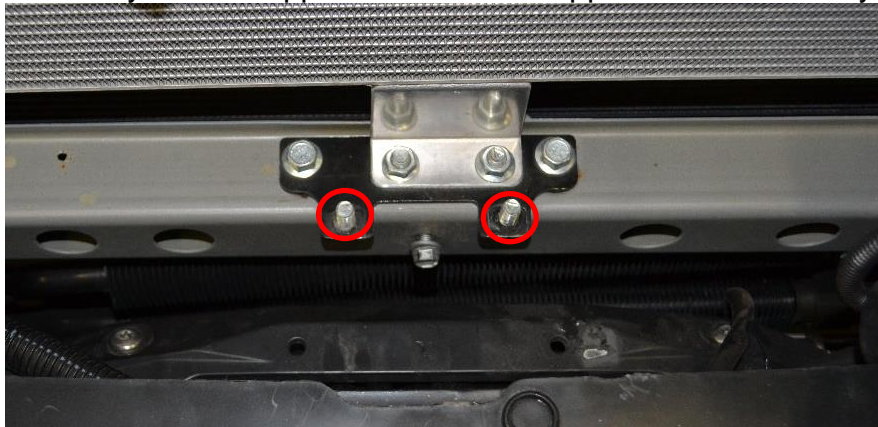
For questions or help with the installation, please call SDHQ Offroad @ 480-633-2929
 Mon.–Fri. 8:00am–5:30pm and Sat. 8:00am–3:30pm Arizona Time. www.sdhqoffroad.com

- 3. Remove the factory Center Support:** Remove the latch spring and clip circled to the right. Using a 10mm socket and ratchet, remove the (2) flange nuts circled to the right. Use a 10mm wrench to remove the bolt behind the hood latch, this bolt will be reused.



- 4. If equipped with a TRD Supercharger:** Use a 12mm socket and ratchet to remove the (2) nuts holding the pump circled below in red.

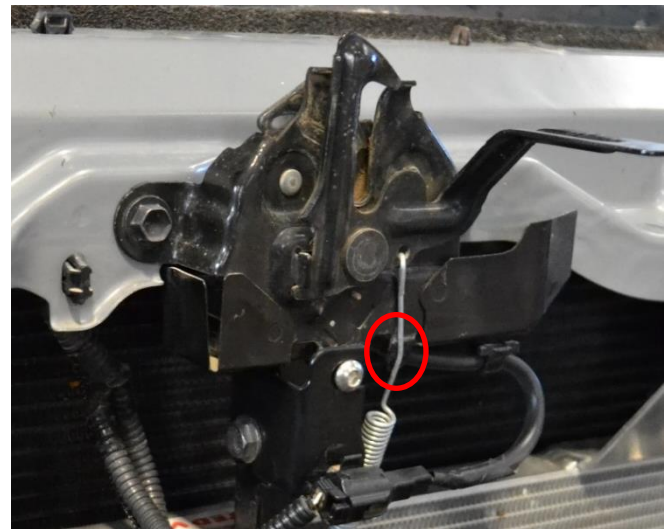
- 5.** Use a 10mm wrench to remove the lower bolt holding the factory center support. The center support section is ready to be removed now.



- 6. Installing the Center Support:** Begin rethreading the bolt that was removed from Step 5 back into the factory location. Slide the bottom slot of the Center Support Bracket behind that bolt. Use the factory bolt that was removed during Step 3 for the top of the center support. Tighten both of these bolts.

- 7. If equipped with the TRD Supercharger:** Set the pump that was moved in step 4 and tighten down the nuts using a 12mm socket and ratchet.

- 8.** Bend the tab down that is circled in red to the right.



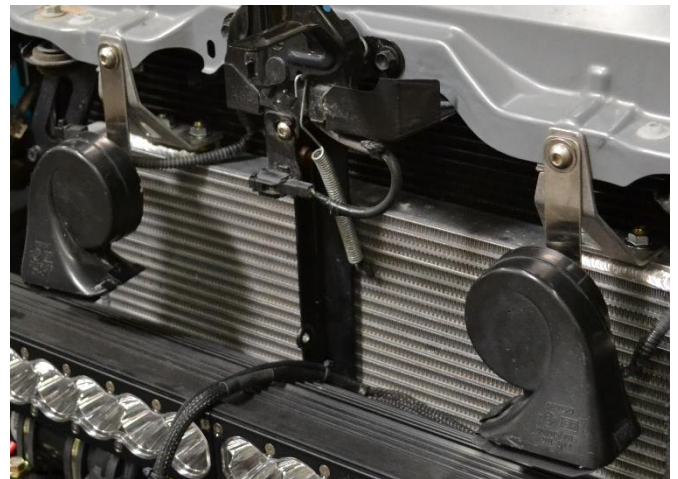
- 9.** Place the Latch Support bracket as pictured and use a 4mm Allen wrench with the M6 – 1.0 x 20mm to secure it in place. Insert (1) 1/4" – 20 x 3/4" hex head bolt with (1) 1/4" washer through the passenger side of the mount. Place another 1/4" washer and (1) 1/4" – 20 lock nut and tighten with medium strength Loctite using a 7/16" socket and ratchet and 7/16" wrench.

10. The Grille Support bracket will use (4) 1/4" – 20 x 3/4" hex head bolts, (8) 1/4" washers and (4) 1/4" – 20 lock nuts. Place and tighten down the hardware connecting the Grille Support bracket to the factory grille support mount as pictured below. Place and tighten the hardware connecting the Grille Support bracket to the Center Support bracket. Use medium strength Loctite.



11. **Horn Placement:** The horns will need to be moved if running a light bar in the top slot. If you don't have a supercharger, the horns can be flipped around using the supplied M8 button head bolts and 5/16" washers. This will allow enough clearance so the light bar does not make contact with the horns. Orientate the horns such that they point down to prevent water intrusion.

12. If you have a supercharger and are running a light bar in the top location, the horns need to be moved to a different location than Step 11. Use a 12mm socket and ratchet to remove the bolt holding them to the core support. Remove the Bolt connecting the factory horn bracket to the horn. Replace the horn bracket with the supplied horn extension bracket. Cut the supplied ground wire to the length necessary to properly ground the horns. Use the supplied 1/4" and 5/16" ring terminals.



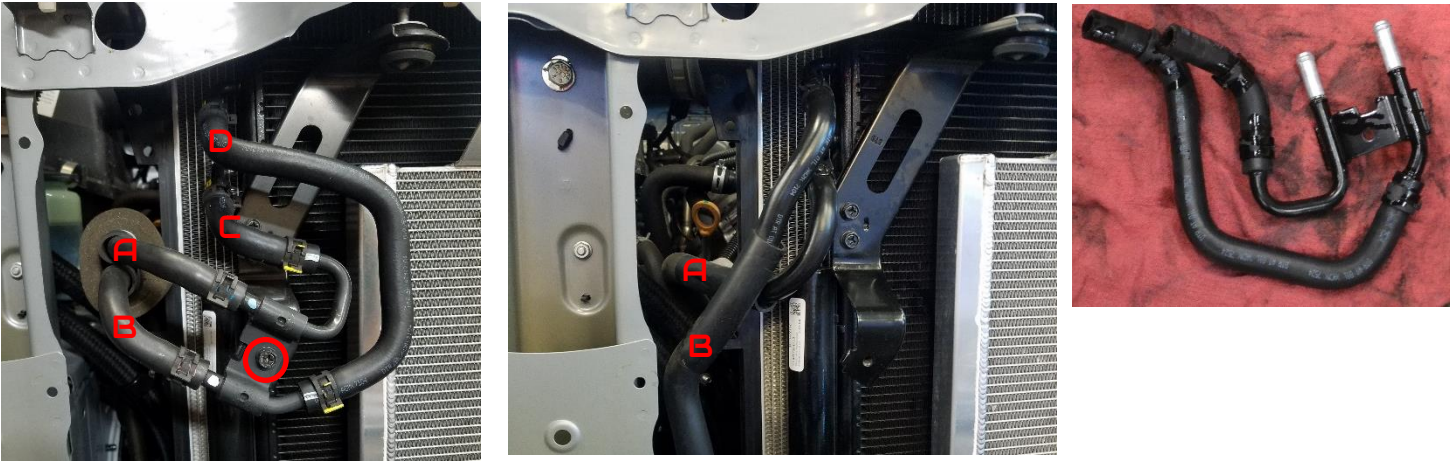
13. The passenger side horn can also mount to the SDHQ Center Support as pictured. Insert the supplied 1/4" – 20 x 3/4" bolt through the horn ground wire, a 1/4" washer and the horn mount. Insert that bolt through the center support. Place another 1/4" washer and thread a 1/4" lock nut using Loctite. Tighten down the bolt and nut using a 7/16" wrench and 7/16" socket and ratchet. The horn needs to be orientated such that it points down to prevent water intrusion.



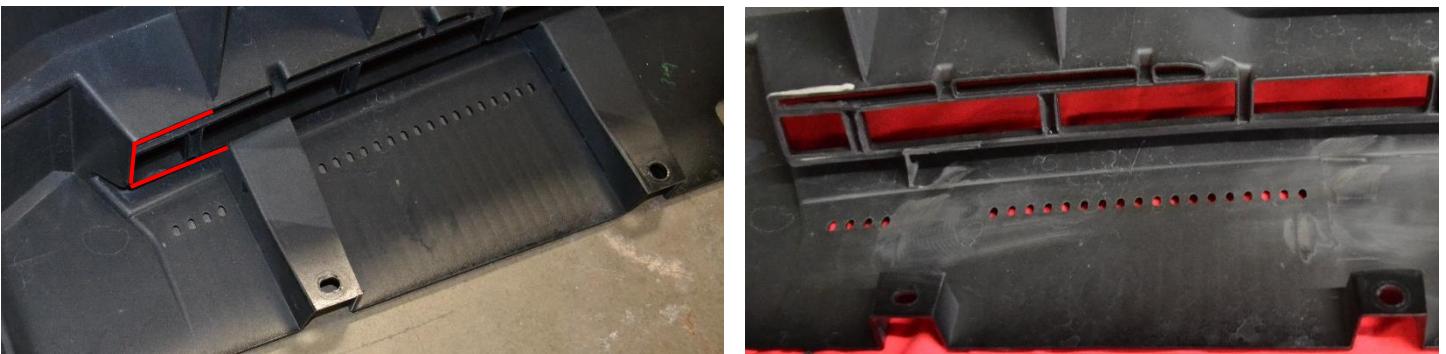
For questions or help with the installation, please call SDHQ Offroad @ 480-633-2929
Mon.–Fri. 8:00am–5:30pm and Sat. 8:00am–3:30pm Arizona Time. www.sdhqoffroad.com

14. Place a 5/16" washer over a M8 – 1.25 x 20mm bolt. Place the driver side horn ground wire over the bolt. Tighten the bolt into the factory location of the horns using a 5mm Allen Head. Repeat this step with the passenger side horn ground wire. Use the 8" zip ties to secure and clean up the ground wires.

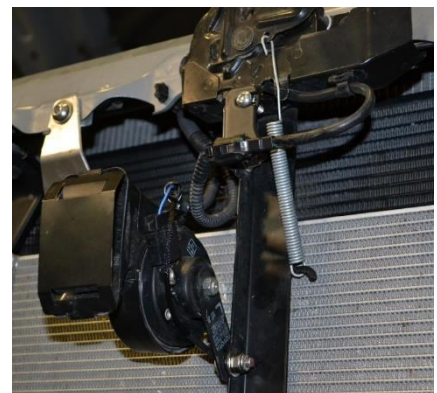
15. **Transmission lines reroute:** This step is only required if running an Onx6. The bracket and metal hoses shown below will need to be removed. Start by removing the bolt circled below in red using a 10mm socket and ratchet. Place a catch can below the hoses so no fluids are spilt. Remove the hose clamps and hoses at C and D from the transmission cooler. Remove the hose clamps and hoses at A and B. Connect the hose and hose clamp at A to C, and connect B to D. The parts being removed are pictured to the right. Bend the remaining tab back by hand far enough to clear the Onx6.



16. **TRD Pro Grille:** If running a TRD Pro Grille and using the top slot, the grille will need to be trimmed. The pictures below show where needs to be cut on both sides of the grille. Approximately 1/8" was trimmed where the lines are below left. The plastic ribs will need to be removed as shown below right.



17. Install the latch spring and wire clip as pictured. Continue with the Install Instructions for the Behind the Grille Mount.



*****Double check all hardware is installed correctly and tight*****

*****Re-torque ALL bolts after 100 miles*****



190 S McQueen Rd
Ste 109 Gilbert, AZ 85233
Phone: 480-633-2929 | Fax: 480-633-1791
www.sdhqoffroad.com

Follow us on:



Facebook



Instagram

For questions or help with the installation, please call SDHQ Offroad @ 480-633-2929
Mon.–Fri. 8:00am–5:30pm and Sat. 8:00am–3:30pm Arizona Time. www.sdhqoffroad.com