



SDHQ Motorsports
190 S McQueen Rd
Ste 109 Gilbert, AZ 85233
www.SDHQoffroad.com

Product Packing List

Product: SDHQ-53-1103-XK70-CM

Description: SDHQ Built 2022+ Tundra Crew Max ARB
Air Compressor Mount

- | | |
|---|-------------------------|
| _____ (1) Compressor Plate | SDHQ-53-1103-XK70-CM-A |
| _____ (1) Upper Bracket | SDHQ-53-1103-XK70-CM-B |
| _____ (1) Left Lower Bracket | SDHQ-53-1103-XK70-CM-C |
| _____ (1) Right Lower Bracket | SDHQ-53-1103-XK70-CM-D |
| _____ (1) Hardware Package | SDHQ-53-1103-XK70-CM-HP |
| _____ (1) Drilling Template | SDHQ-53-1103-XK70-CM-E |
| _____ (1) Leather Patch | |
| _____ (2) 5/16"-18 x 1-1/4" Grade 8 Hex Head Bolt | |
| _____ (2) 5/16" Grade 8 SAE Washer | |
| _____ (2) 1/4"-20 x 7/8" Grade 8 Hex Head Bolt | |
| _____ (3) 1/4" Grade 8 SAE Washer | |
| _____ (1) M6-1.0 x 20mm 10.9 Hex Head Bolt | |
| _____ (4) M6-1.0 x 16mm S.S. Flanged Button Head Bolt | |
| _____ (1) #12 x 1-1/4" Thread Forming Screw | |
| _____ (2) 5/16" Neoprene Sealing Washer | |
| _____ (3) 1/4" Neoprene Sealing Washer | |
| _____ (1) 5/16" Off-White Nylon Spacer | |
| _____ (1) 1/4" Black Nylon Spacer | |
| _____ (2) 8 Gauge 1/4" Eyelet Terminal | |
| _____ (1) 1-1/2" Grommet | |
| _____ (5) 11" Zip Ties | |

Inspected and Packaged By: _____ Date: _____

Optional Accessories For Hybrid and Non-Hybrid:

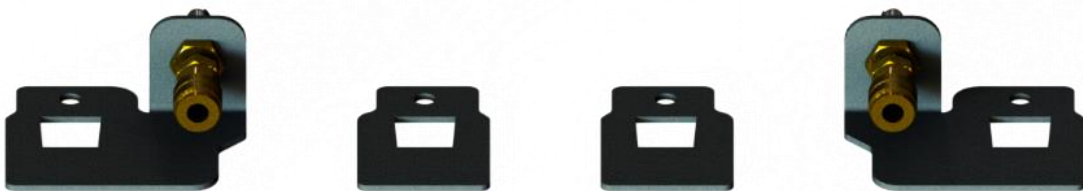
SDHQ Built 22+ Toyota Tundra Air Chuck and Switch Mount

SDHQ-53-1103-XK70-S1



SDHQ Built 22+ Toyota Tundra Remote Air Chucks

SDHQ-53-1103-XK70-S2



Optional Accessories For Non-Hybrid:

SDHQ Built ARB Twin 9ft Extension Harness Kit

SDHQ-02-1103-ARB9

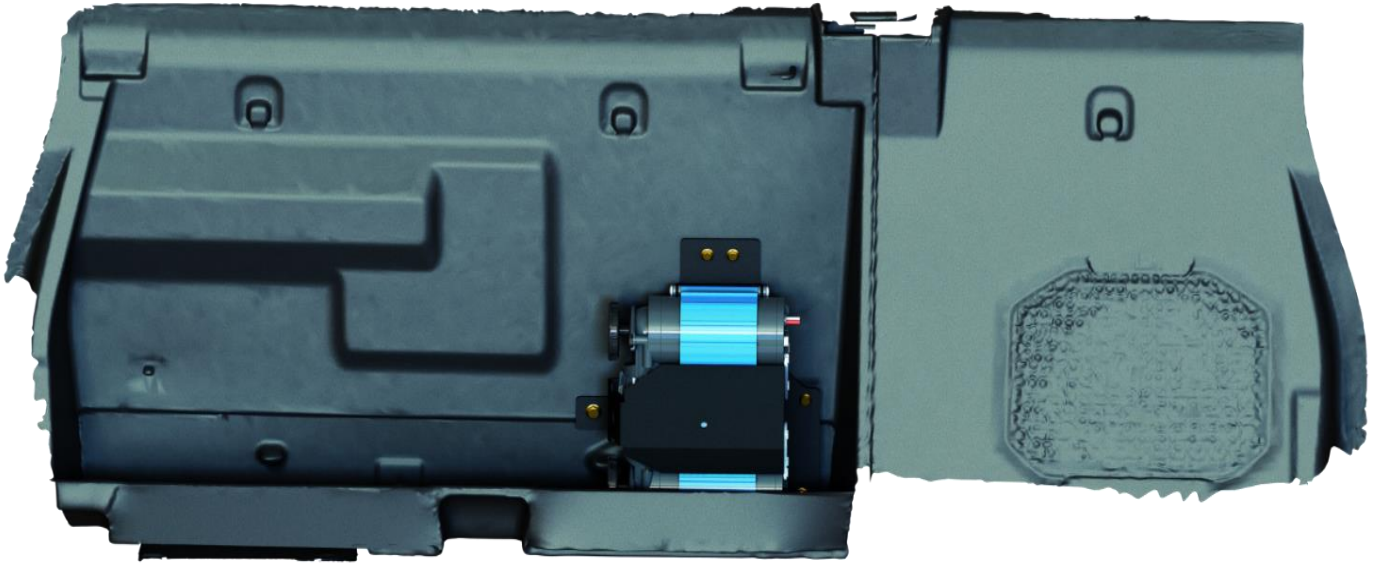


SDHQ Motorsports
 190 S McQueen Rd
 Ste 109 Gilbert, AZ 85233
www.SDHQoffroad.com

INSTALLATION INSTRUCTIONS

Product: SDHQ-53-1103-XK70-CM

Description: SDHQ Built 2022+ Tundra Crew Max ARB Air Compressor Mount



<u>Parts List</u>	<u>Hardware List</u>	<u>Required Tools</u>
(1) SDHQ Compressor Plate SDHQ-53-1103-XK70-CM-A (1) SDHQ Upper Bracket SDHQ-53-1103-XK70-CM-B (1) SDHQ Left Lower Bracket SDHQ-53-1103-XK70-CM-C (1) SDHQ Right Lower Bracket SDHQ-53-1103-XK70-CM-D (1) SDHQ Drilling Template SDHQ-53-1103-XK70-CM-E (1) Hardware Package SDHQ-53-1103-XK70-CM-HP	(1) Leather Patch (2) 5/16"-18 x 1-1/4" Grade 8 Hex Head Bolt (2) 5/16" Grade 8 SAE Washer (2) 1/4"-20 x 3/4" Grade 8 Hex Head Bolt (3) 1/4" Grade 8 SAE Washer (1) M6-1.0 x 20mm Class 10.9 Hex Head Bolt (4) M6-1.0 x 16mm S.S. Flanged Button Head Bolt (1) M5 x 25mm S.S. Thread Forming Screw (2) 5/16" Neoprene Sealing Washer (3) 1/4" Neoprene Sealing Washer (1) 5/16" Off-White Nylon Spacer (1) 1/4" Black Nylon Spacer (2) 8 Ga 1/4" Eyelet Terminal (1) 1-1/2" Grommet (5) 11" Zip Ties	Drill 7/16" Drill Bit 1-1/2" Hole Saw Center Punch 10mm, 14mm, 7/16", and 1/2" Sockets Ratchet 3" and 12" Extension 4mm Allen Wrench Phillips Screw Driver Interior Trim Tools

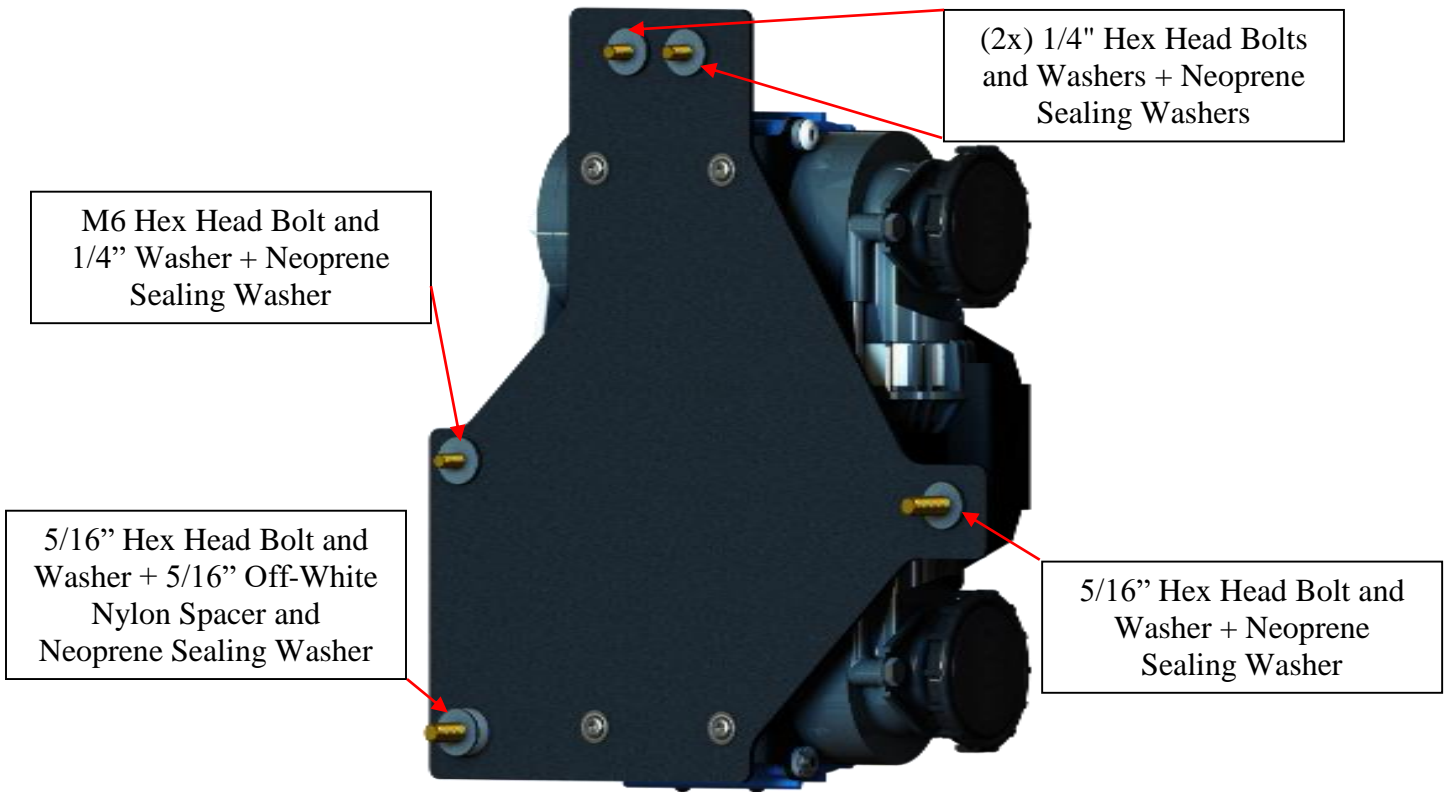
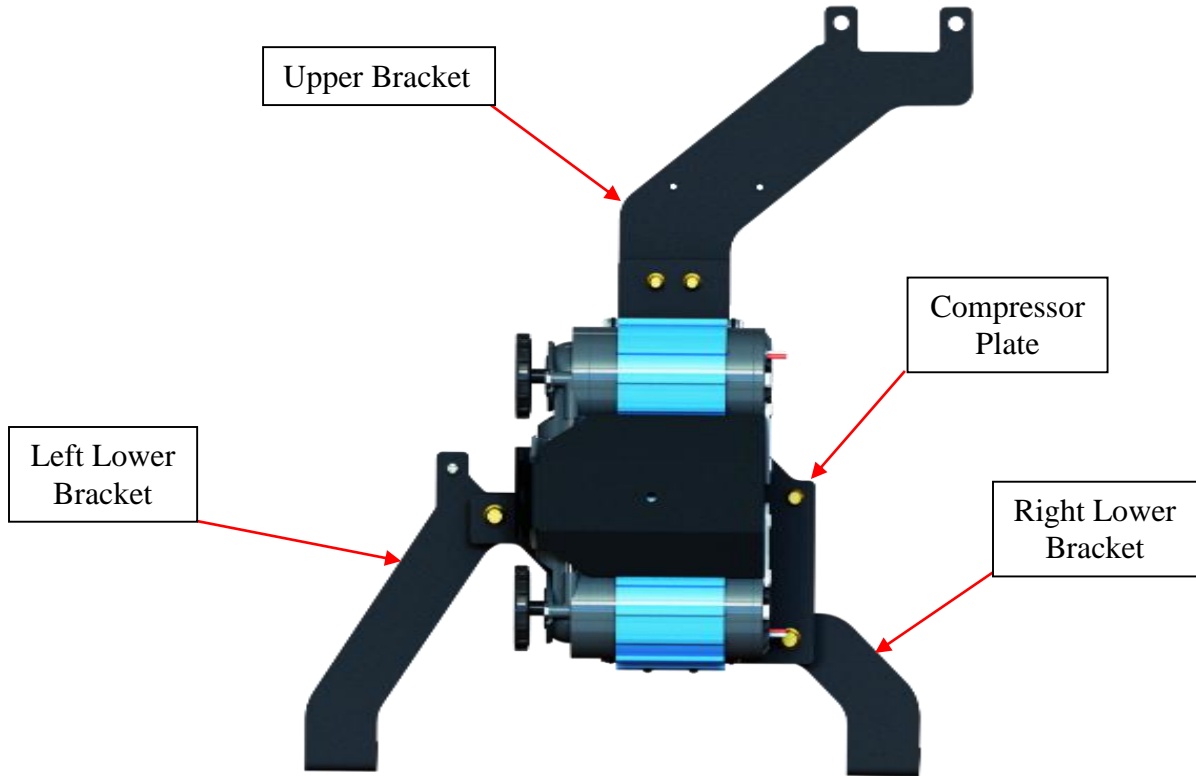
Tech Notes

Approx. Install Time: 2 Hours (excluding wiring)

READ ALL INSTRUCTIONS THOROUGHLY FROM START TO FINISH BEFORE BEGINNING INSTALLATION!

For questions or help with the installation, please email help@sdhqoffroad.com
 Store front hours: Mon. – Fri. 8:00am – 5:30pm and Sat. 9:00am – 2:00pm Arizona Time.

SDHQ-53-1103-XK70-CM



For questions or help with the installation, please email help@sdhqoffroad.com
Store front hours: Mon. – Fri. 8:00am – 5:30pm and Sat. 9:00am – 2:00pm Arizona Time.

Installation Instructions:

1. Un-box your SDHQ 22+ Tundra ARB Air Compressor Mount and lay out the parts. Verify all parts are present and familiarize yourself with all the parts.
2. Remove the trim from around the rear seat base by pushing in the clips and pulling them out, then remove the front panel. Next remove the kick panels on either side rear door. Then remove the side panels for the seat base by pulling them toward the front of the truck.



3. Using a 14mm socket remove the (2) bolts to remove the driver side rear seats, there may be a wiring harness connected to the seat, be careful when removing.



4. Using a 14mm socket remove the (2) bolts to remove the passenger side rear seat, there may be a wiring harness connected to the seat, be careful when removing.



For questions or help with the installation, please email help@sdhqoffroad.com
Store front hours: Mon. – Fri. 8:00am – 5:30pm and Sat. 9:00am – 2:00pm Arizona Time.

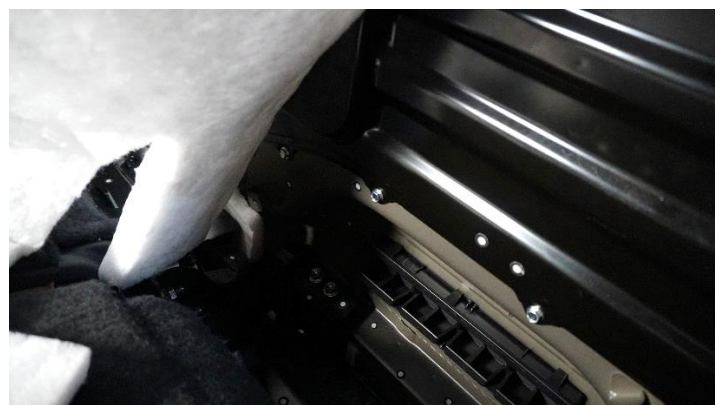
5. Using plastic trim tools remove the plastic panel on the driver side, this is only held in by clips, pull upward to remove.



6. Remove the emergency tool kit and the jack. Using a 10mm socket remove the (3) bolts retaining the other plastic panel, one is under the strap for the tool kit, other (2) are on either side of the panel.

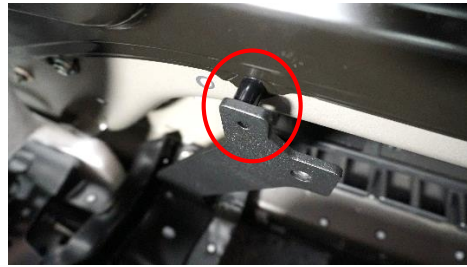
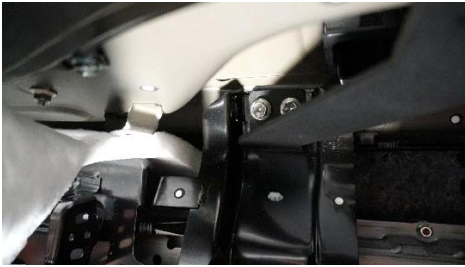
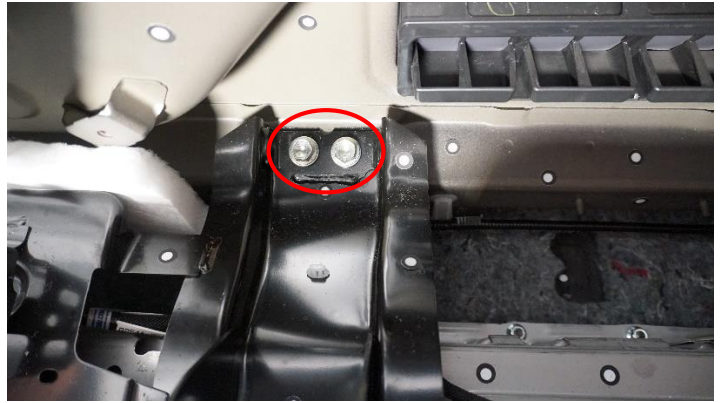
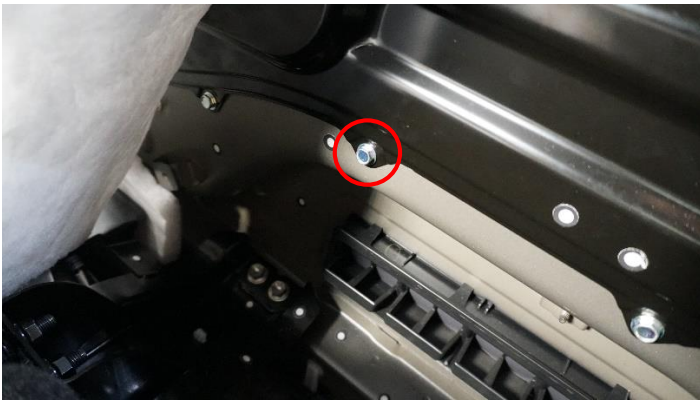


7. Using plastic trim tools remove the remaining plastic panel. It is held in by clips along the top of the panel and down the left side, lift up to remove. Pull back the white insulation to allow access to the back of the cab and the back seat bolts.

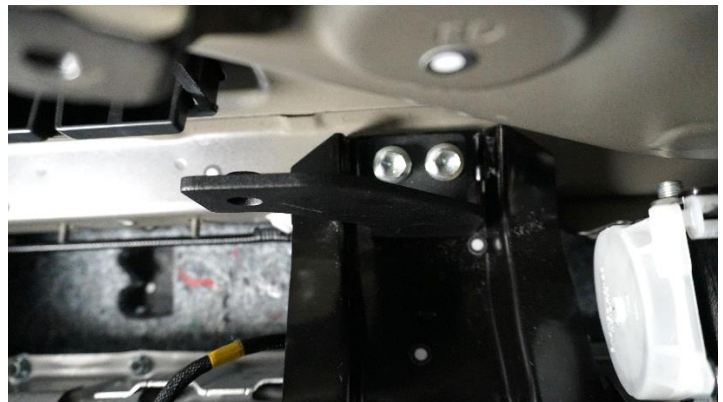


8. Using a 10mm Socket remove (1) screw shown below. Using a 14mm Socket remove the (2) passenger seat bolts shown below. Install the Left Lower Bracket into place and secure using a 12" Extension and a 14mm Socket. Install the 1/4" Black Nylon Spacer behind the Bracket and using a Philips screw driver install the M5 Thread Forming Screw, circled in red.

For questions or help with the installation, please email help@sdhqoffroad.com
Store front hours: Mon. – Fri. 8:00am – 5:30pm and Sat. 9:00am – 2:00pm Arizona Time.



9. Using a 14mm Socket remove the (2) driver seat bolts shown below. Install the Right Lower Bracket into place and secure using a 12" Extension and a 14mm Socket.



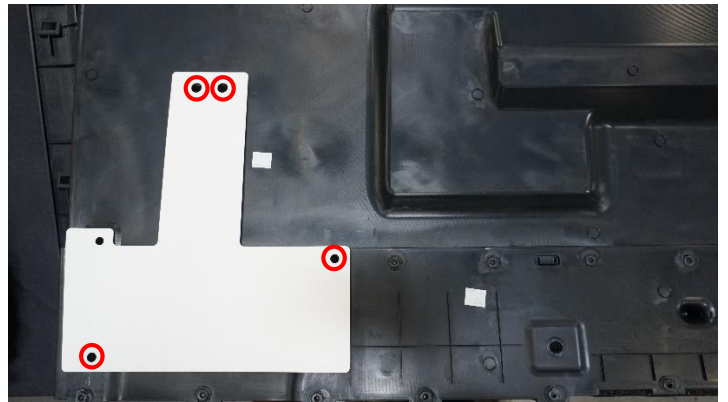
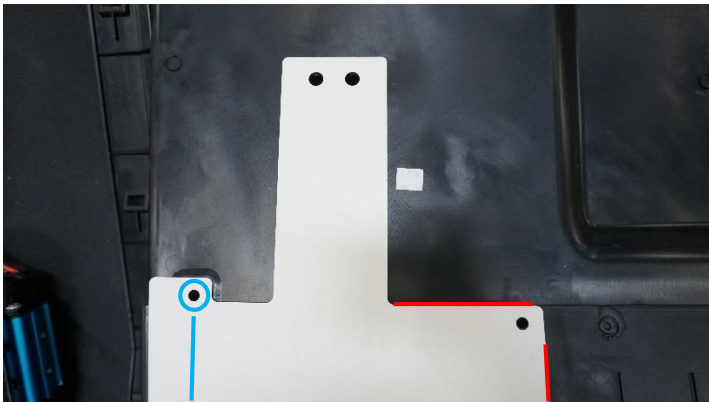
10. Fold the white insulation back down over the back of the cab. Use a knife to create a slot to allow the white insulation to be placed behind the Left Lower Bracket. Place the insulation behind the brackets.



11. Using a 14mm Socket remove the (2) bolts retaining the center seat belt, be careful as the seat belt can fall when the bolts are removed. Install the Upper Bracket behind the seat belt and secure using a 14mm Socket.



12. On the backside of the Passenger plastic panel using a knife remove the plastic ridge that is, shown by blue line, found below the factory mounting hole, circled in blue, in the plastic panel. Find the Drilling Template, use the (2) edges with red lines to align the template, mark the hole locations on the back of the larger plastic panel. Using a center punch mark the center of the hole locations. Using a 7/16" drill bit, drill out the hole locations circled in red.



13. **Pause to route wiring, refer to the wiring section for instructions.** To allow the wiring to pass through the panel, drill a 1-1/2" hole through the bottom of the panel, measure 1-1/8" from the edge of the plastic extrusion and mark using a center punch.



14. Feed the de-pinned harness through the bottom of the larger plastic panel. Reinstall the panel, be careful with the left side clips, the panel will be harder to install with the brackets installed. Install the supplied grommet over the harness and install it into the hole in the panel. Refer to the wiring section for pinning the connector.

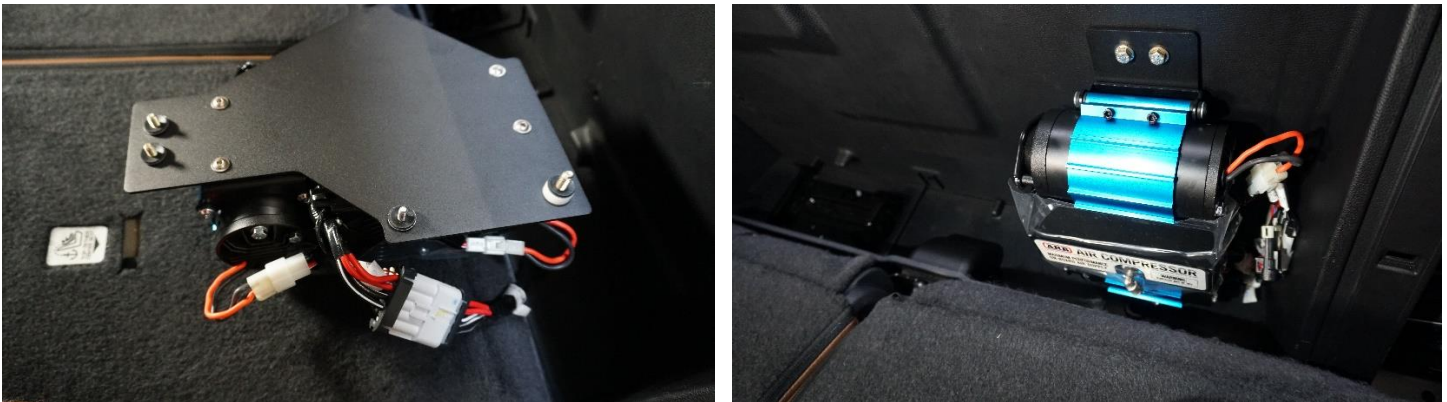


15. Refer to ARB Install Instructions to clock the fitting connection. (**Install the appropriate air fittings for the type of install**) Using a 4mm allen wrench install the compressor onto the compressor plate using the (4) M6 flanged button head bolts, see below.



16. Install the hardware onto the compressor plate, refer to Page 4. (**If using SDHQ-53-1103-XK70-S1. Place the ACSM on the Compressor plate and use the 1/4"-20 x 1" Hex Head Bolts in replacement of the 1/4"-20 x 7/8" Hex Head Bolts**)

17. Connect the wiring to the ARB Twin Compressor before installing the compressor plate. Install the compressor plate, start all of the hardware before tightening the bolts down. (**Non-Hybrid return to the wiring instructions step 7**)



18. Install the ARB Filters onto the ARB Twin. Test the ARB Twin Air Compressor to ensure that the compressor is functioning correctly. (**SDHQ-53-1103-XK70-S1 refer to Step 4-9**)

19. Reinstall the driver side plastic panel. Install the (2) 10mm bolts that retain the passenger side plastic panel and the jack and emergency kit, refer to step 5 if needed.

20. Reinstall the rear seats using a 14mm socket, refer to steps 3-4 if needed. Then reinstall remaining plastic panels, refer to step 2 if needed.

21. Place the Leather Patch on the Seat back to protect the material from the Compressor Heat.

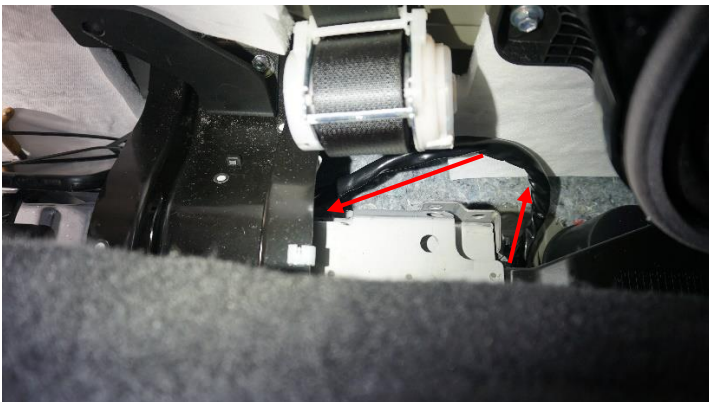
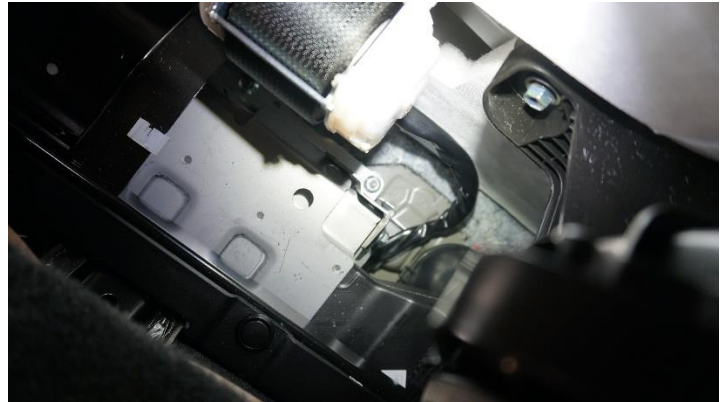
22. Enjoy your new SDHQ Built Tundra ARB Air Compressor Mount.



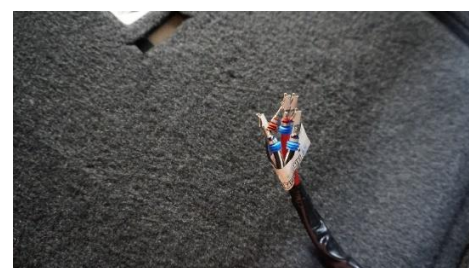
For questions or help with the installation, please email help@sdhqoffroad.com
Store front hours: Mon. – Fri. 8:00am – 5:30pm and Sat. 9:00am – 2:00pm Arizona Time.

Hybrid Tundra Wiring:

1. Using a pair of wire crimpers, crimp the (2) supplied terminals onto the ARB Twin wiring harness. (1) terminal will be crimped onto the (2) red wires. (1) terminal will be crimped onto the (2) black wires.
2. Attach the positive wires to the positive terminal. Attach the negative wires to the negative terminal.
3. Route the wiring harness through the gap between the hybrid battery pack and the fan blower, as shown, leaving the slack behind the battery pack. Use supplied Zip Ties to secure harness, be careful to leave enough slack to attach the harness to the ARB Twin.



4. Using a 10mm socket remove the negative terminal from the battery.
5. Remove the clip lock from the ARB connector. De-pin the connector to allow it to be routed through the plastic panel.



6. Wiring complete go back to the install instructions and continue install.

For questions or help with the installation, please email help@sdhqoffroad.com
Store front hours: Mon. – Fri. 8:00am – 5:30pm and Sat. 9:00am – 2:00pm Arizona Time.

Non-Hybrid Tundra with SDHQ 9ft ARB Extension Harness (Sold Separately):

1. Begin by locating the wiring grommet on the passenger side rear of the cab, remove the tape from the grommet to allow access to insert wires into the grommet.



2. Open the Passenger rear door, push in the clips for the plastic trim around the bottom of the rear seat. Pull off the front panel and set aside. Pull off the corner panel to allow access to the top of the grommet.



3. Remove the tape from the top of the grommet, this will allow for the wires to be feed through the grommet.



4. Open the SDHQ 9ft ARB Extension Harness and tape over the pinned ends to prevent damage to the wires while feeding them through the grommet.
5. Once the wires are through the grommet pull the wires until the length allows for the wires to reach the center rear of the rear seat. Pull through some additional wire to allow for the wires to be feed through the plastic panel.



6. Return to the ARB Twin Compressor Mount instructions step 13.
7. Pull any slack from behind the seat back toward the grommet. Place the piece of heat shrink over the single black wire. Use a pair of wire strippers to remove the insulation about 3/8" from the end of the wire. Then using a pair of wire crimpers crimp the eyelet terminal on the end of the wire.
8. Using a 10mm socket remove (1) of the ground wire bolts for the fuse box under the rear seat and place the eyelet terminal on top and replace the bolt.
9. Pull any remaining slack out of the grommet toward the bottom, tape the grommet wires back up on the top to return to a factory look. Replace the plastic trim pieces around the bottom of the rear seat.



10. Using Zip Ties secure the harness over the top of the passenger frame rail, running toward the front of the truck.
11. Tape the bottom of the grommet to return it to a factory look.
12. Run the ARB Extension Harness down the top of the frame rail and use zip ties or Adel clamps to secure the harness. Connect the ARB Wiring Harness to the SDHQ ARB Extension Harness.
13. Continue the wires on top of the frame rail until you reach the front wheel. Route the harness up the firewall to the battery.
14. Using a pair of wire crimpers, crimp the (2) supplied terminals onto the ARB Twin wiring harness. (1) terminal will be crimped onto the (2) red wires. (1) terminal will be crimped onto the (2) black wires.
15. Connect the eyelets to the battery and secure the wires using Zip Ties.
16. Use Zip Ties to secure any slack near the front body mount behind the front wheel.
17. Wiring complete return to step 18.

For questions or help with the installation, please email help@sdhqoffroad.com
Store front hours: Mon. – Fri. 8:00am – 5:30pm and Sat. 9:00am – 2:00pm Arizona Time.

Double check all hardware is installed correctly and tight

Re-torque ALL bolts after 100 miles



190 S McQueen Rd
Ste 109 Gilbert, AZ 85233
www.sdhqoffroad.com

Follow us on:



Facebook



Instagram

For questions or help with the installation, please email help@sdhqoffroad.com
Store front hours: Mon. – Fri. 8:00am – 5:30pm and Sat. 9:00am – 2:00pm Arizona Time.