



SDHQ Motorsports
190 S McQueen Rd
Ste 109 Gilbert, AZ 85233
Phone: 480-633-2929

Product Packing List

Product: SDHQ-52-3005-200

Description: 2008-2021 Land Cruiser and LX 570 Billet
Battery Hold Down Upgrade

_____ (1) SDHQ Main Tie Down	SDHQ-00-1810-U1-A
_____ (1) SDHQ Tie Down Backer	SDHQ-52-3005-200-A
_____ (1) Toyota 34R Battery Hold Down Upgrade	SDHQ-50-3005-U1
_____ (1) Hardware Package	SDHQ-52-3005-200-B
_____ (2) 5/16" - 18 x 3/4" Grade 8 Hex Head Bolt	
_____ (4) 5/16" Grade 8 Washers	
_____ (2) 5/16" - 18 Grade 8 Locknuts	
_____ (2) 1/4" - 20 x 8" J-Hook	
_____ (2) 1/4" - 20 x 9" J-Hook	
_____ (1) 1/4" - 20 S.S. Serrated Flange Nut	
_____ (1) Edge Clip Zip Tie	

Inspected and Packaged By: _____ **Date:** _____

For questions or help with the installation, please call SDHQ Offroad @ 480-633-2929
Mon.-Fri. 8:00am-5:30pm and Sat. 8:00am-3:30pm Arizona Time. www.sdhqoffroad.com

Included in **SDHQ-50-3005-U1**:

- (1) SDHQ Main Billet Battery Hold Down
- (2) SDHQ Billet Aluminum Adapter
- (1) Hardware Package
 - (1) ¼" - 20 x 7" J-Hook
 - (1) ¼" - 20 S.S. Serrated Flange Nut
 - (2) M6 - 1.0 S.S. Serrated Flange Nut

SDHQ-50-3005-U1-A
SDHQ-50-3005-U1-B
SDHQ-50-3005-U1-C



SDHQ Motorsports
 190 S McQueen Rd
 Ste 109 Gilbert, AZ 85233
 Phone: 480-633-2929

INSTALLATION INSTRUCTIONS

Product: SDHQ-52-3005-200

Description: 2008-2021 Land Cruiser and LX 570 Billet Battery Hold Down Upgrade



<u>Parts List</u>	<u>Hardware List</u>	<u>Required Tools</u>
(1) SDHQ Main Tie Down SDHQ-00-1810-U1-A (1) SDHQ Tie Down Backer SDHQ-52-3005-200-A (1) Toyota 34R Battery Hold Down SDHQ-50-3005-U1 (1) Hardware Package SDHQ-52-3005-200-B	(2) 5/16" – 18 x 3/4" Grade 8 Hex Head Bolt (4) 5/16" Grade 8 Washers (2) 5/16" – 18 Grade 8 Locknuts (2) 1/4" – 20 x 8" J-Hooks (2) 1/4" – 20 x 9" J-Hooks (1) 1/4" – 20 S.S. Serrated Flange Nut (1) Edge Clip Zip Tie	5/16" drill or step bit Drill 10mm, 12mm, 1/2" Sockets Ratchet 1/2" Wrench Sharpie Panel Clip Pliers

Tech Notes

Fits: 2008-21 Toyota Land Cruiser
 Some drilling required. For use with 24, 27, 31, 34/34R and 25/35 Batteries.
 Replaces factory battery hold down.
Approx. Install Time: 1 Hour

For questions or help with the installation, please call SDHQ Offroad @ 480-633-2929
 Mon.–Fri. 8:00am–5:30pm and Sat. 8:00am–3:30pm Arizona Time. www.sdhqoffroad.com

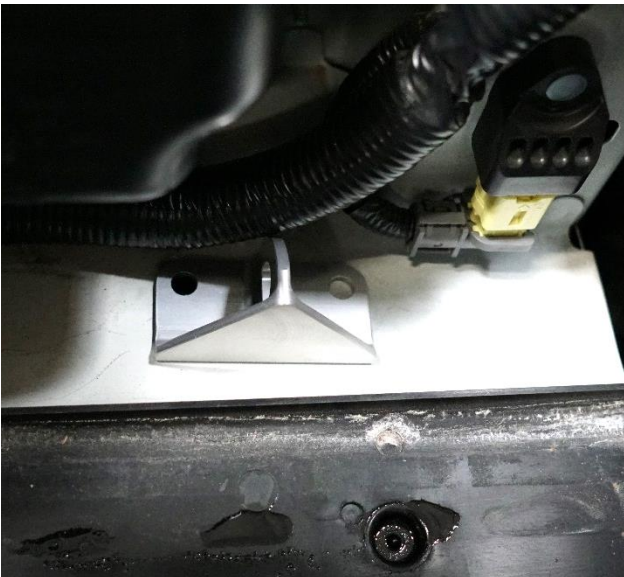
*****READ ALL INSTRUCTIONS THOROUGHLY FROM START TO FINISH BEFORE BEGINNING INSTALLATION!*****

Installation Instructions:

1. Unbox your SDHQ Battery Hold Down Upgrade kit and check over all parts and hardware. Familiarize yourself with them.
2. **Preparing your Truck.** In your truck's engine bay, remove (7) push-in clips from the radiator cowl and remove the cowl. Next, remove the 12mm nuts on the rear J-Hook of the factory battery hold down and the 10mm bolt securing the front of the factory battery hold down. Remove the factory hold down. Disconnect your battery terminals and remove your battery. Locate the wiring harness in front of the battery and unclip it from the fender as shown below. Remove and discard the white fender clip and use the supplied Edge Clip Zip Tie to secure the wiring harness towards the headlight.

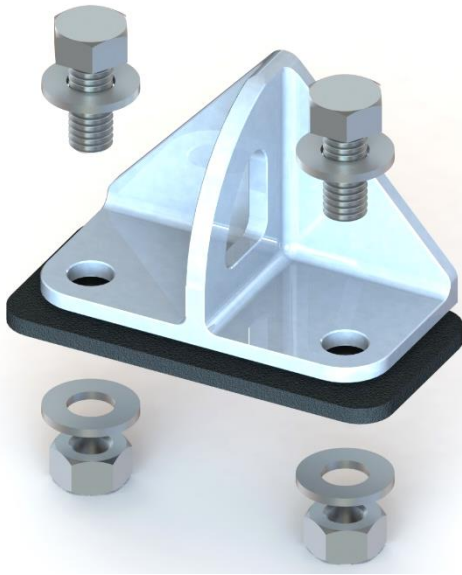


3. **Drilling.** Align the Main Tie down with the panel clip slot from Step 2 and parallel to the battery. Mark the other hole in the fender to be drilled. Remove the Main Tie Down. Drill a hole through the mark and the slot. Deburr if necessary.



For questions or help with the installation, please call SDHQ Offroad @ 480-633-2929
Mon.–Fri. 8:00am–5:30pm and Sat. 8:00am–3:30pm Arizona Time. www.sdhqoffroad.com

4. Place the Main Tie Down over the holes. Align (2) 5/16" bolts and washers through the Main Tie Down and drilled fender. Align the Tie Down Backer under the fender, over the bolts and secure the Main Tie Down with the remaining 5/16" hardware. See diagram below.



5. **Installing the SDHQ Battery Hold Down.** Group 34/34R Batteries will use the 8" J-Hook, all others will use the 9" J-Hooks. Place the SDHQ Billet Aluminum Adapters through the SDHQ Battery Hold Down. Insert the J-Hooks through the Adapters and thread on the 1/4" – 20 Flange Nuts onto the J-Hooks. Place the SDHQ Battery Hold Down on the battery. While tightening the 1/4" nuts, hook the J-Hooks to the factory tie down and SDHQ Tie Down.



6. (1) 1/4" – 20 x 7" & (2) 1/4" – 20 x 8" (or) 9" J-Hook and (2) M6 – 1.0 Nuts will not be used.
7. **Complete!** Your Toyota Battery Hold Down Upgrade is finished.

Double check all hardware is installed correctly and tight

Re-torque ALL bolts after 100 miles



190 S McQueen Rd
Ste 109 Gilbert, AZ 85233
Phone: 480-633-2929 | Fax: 480-633-1791
www.sdhqoffroad.com

Follow us on:



Facebook



Instagram

For questions or help with the installation, please call SDHQ Offroad @ 480-633-2929
Mon.–Fri. 8:00am–5:30pm and Sat. 8:00am–3:30pm Arizona Time. www.sdhqoffroad.com