



SDHQ Motorsports
190 S McQueen Rd
Ste 109 Gilbert, AZ 85233
Phone: 480-633-2929

Product Packing List

Product: SDHQ-52-1650-200

Description: 2008-2021 Toyota Land Cruiser Hidden
Winch Mount

_____ (1) Winch Mount	SDHQ-52-1650-200-A
_____ (2) Lower Support Mounts	SDHQ-52-1650-200-B
_____ (2) Outer Bumper Supports	SDHQ-52-1650-200-C
_____ (2) Lower Bumper Supports	SDHQ-52-1650-200-D
_____ (1) SDHQ Built Billet Fairlead cut template (2016+ Land Cruiser only)	SDHQ-52-1650-200-E
_____ (1) SDHQ Built Billet Fairlead 1.5"	SDHQ-00-1650-15
_____ (1) Hardware Package	SDHQ-52-1650-200-F
_____ (1) Hardware Package	SDHQ-52-1660-200-B

Inspected and Packaged By: _____ Date: _____

For questions or help with the installation, please email help@sdhqoffroad.com
Store front hours: Mon. – Fri. 8:00am – 5:30pm and Sat. 9:00am – 2:00pm Arizona Time.

Included in Hardware Package SDHQ-52-1650-200-F:

- _____ (6) ½"-13 x 1.25" Grade 8 Bolts
- _____ (8) ½" Grade 8 Washers
- _____ (4) ½"-13 Lock Nuts
- _____ (2) 1/4"-20 x 3/4" Grade 8 Bolts
- _____ (6) 1/4" Grade 8 Washers
- _____ (4) 1/4"-20 Grade 8 Nuts
- _____ (2) 1/4"-20 Clip-on Barrel Nuts
- _____ (4) 1/4"-20 x 3/4" 18-8 S.S. Countersunk Bolts
- _____ (4) SDHQ Body Washers SDHQ-ABW 1/4-1-3/8
- _____ (2) 7/16" - 14 x 2" Grade 8 Bolts
- _____ (4) 7/16" Grade 8 Washers
- _____ (2) 7/16" - 14 Grade 8 Locknuts

Included in Hardware Package SDHQ-52-1660-200-B:

- _____ (1) SDHQ Zeon Relocation Wiring kit (SDHQ-02-1660-[A,F1,F2])
- _____ (1) 48" 4 Pin Plug Extension
- _____ (1) ¼"-20 x ¾" Grade 8 Hex Bolt
- _____ (1) ¼"-20 Grade 8 Lock Nut
- _____ (2) ¼"-20 Grade 8 Washers
- _____ (10) 8" Zip Ties
- _____ (3) ¼" Push In Zip Ties
- _____ (4) ¼" ID x ½" OD x 5/16" T Nylon Spacers
- _____ (4) M6 - 1.0 x 20mm S.S. Hex Bolts
- _____ (4) ¼" S.S. Washers
- _____ (1) Male 1 Contact Weather Pack
- _____ (1) Male 16-14GA Weather Pack Terminal
- _____ (1) 16-14GA Weather Pack Grey Cable Seal
- _____ (1) 5" Ground Extension with Female 1 contact Weather pack
(14 awg, 5/16" ring terminal, Female 1 Contact Weather Pack,
Female 16-14GA Weather Pack Terminal, 16-14GA Weather Pack Grey Cable Seal)



SDHQ Motorsports
 190 S McQueen Rd
 Ste 109 Gilbert, AZ 85233
 Phone: 480-633-2929

INSTALLATION INSTRUCTIONS

Product: SDHQ-52-1650-200

Description: 2008-2021 Toyota Land Cruiser Hidden Winch Mount



Parts List	Hardware List	Required Tools
(1) Winch Mount SDHQ-52-1650-200-A (2) Lower Support Mounts SDHQ-52-1650-200-B (2) Outer Bumper Supports SDHQ-52-1650-200-C (2) Lower Bumper Supports SDHQ-52-1650-200-D (1) Factor 55 Hawse Fairlead template SDHQ-52-1650-200-E (1) SDHQ 1.5" Fairlead (1) Hardware Package SDHQ-52-1650-200-F (1) Hardware Package SDHQ-52-1660-200-B	See Page 2	Standard and Metric Sockets/Wrenches 3" and 6" Extensions Wobbly Adapter Ratchet 5/32", 3/16" Allen Bit T25 Torx bit T30 Torx Bit Flush cut pliers Weather Pack crimpers Flat/Philips Head Screw Driver Panel Removal Tools Red Loctite Sufficient tools for cutting bumper plastic; body saw, hole saw, file, etc.

Tech Notes

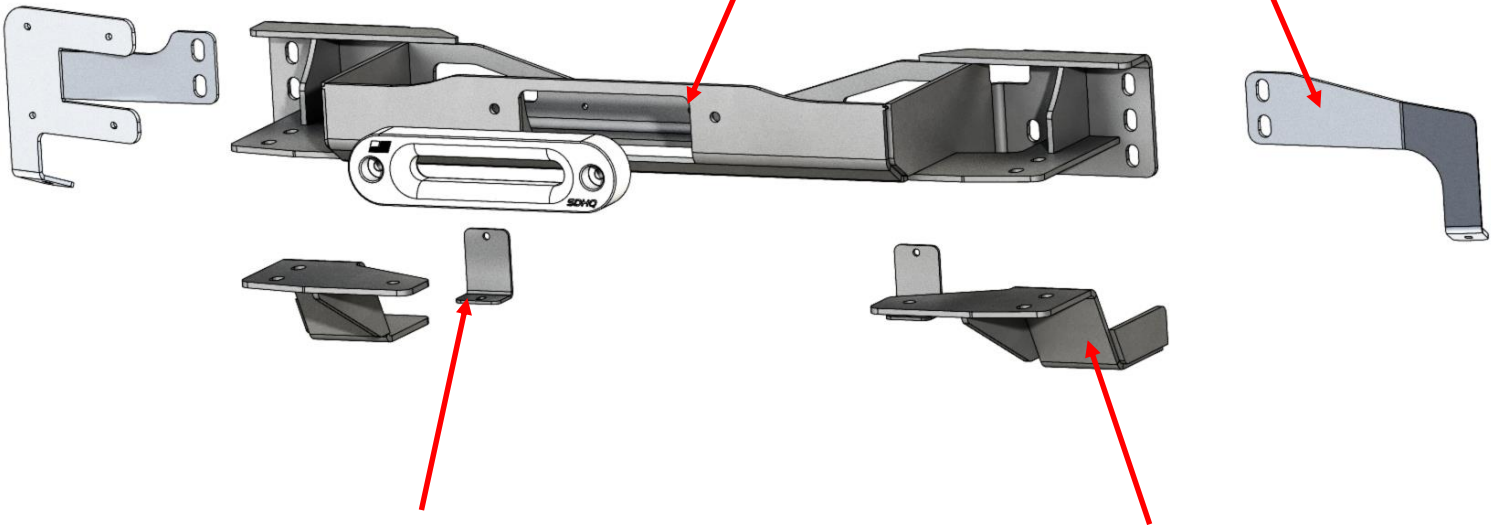
Direct bolt in for 2008-2021 Toyota Land Cruiser.
 SDHQ Winch Mounts are designed for Warn Zeon Platinum Series Winches, others may fit but have not been tested.
 Includes template for factor 55 hawse fairlead cut out for 2016+ Land Cruiser.
 Replaces factory aluminum bumper mount
Approx. Install Time: 6-8+ Hours

*****READ ALL INSTRUCTIONS THOROUGHLY FROM START TO FINISH BEFORE BEGINNING INSTALLATION! *****

For questions or help with the installation, please email help@sdhqoffroad.com
 Store front hours: Mon. – Fri. 8:00am – 5:30pm and Sat. 9:00am – 2:00pm Arizona Time.

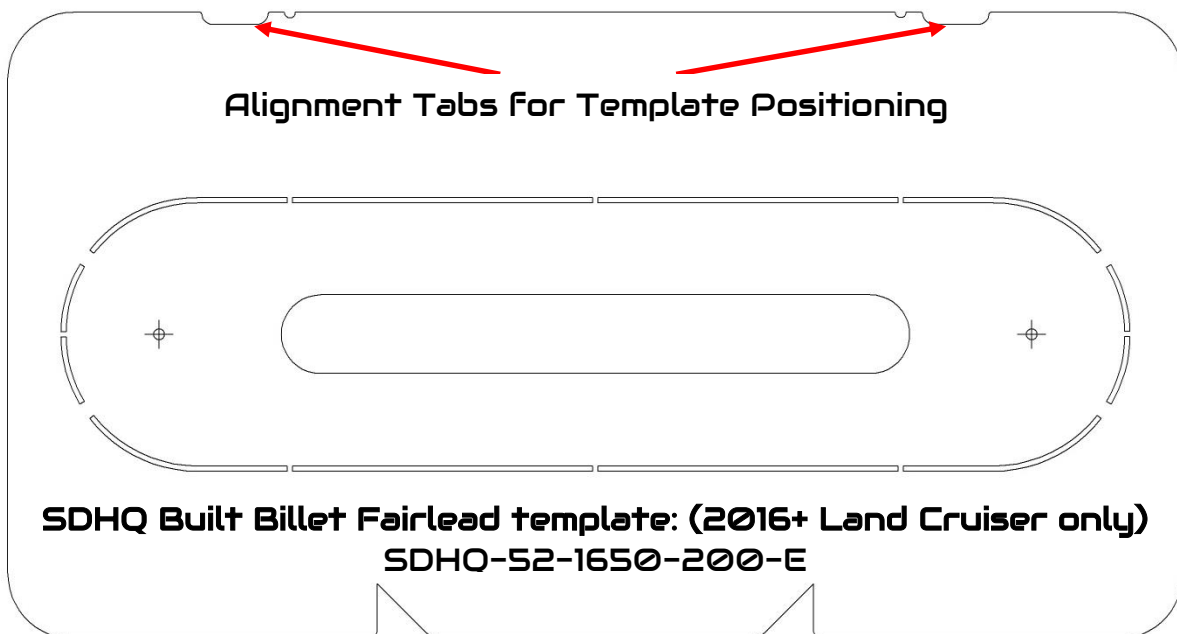
**Winch Mount:
SDHQ-1650-200-A**

**Outer Bumper Support:
SDHQ-1650-200-C**



**Lower Bumper Support:
SDHQ-1650-200-D**

**Lower Support Mount:
SDHQ-1650-200-B**



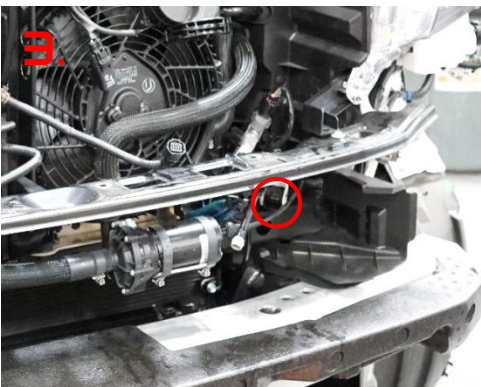
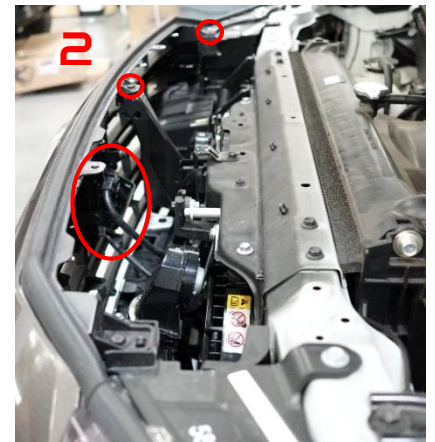
Alignment Tabs for Template Positioning

**SDHQ Built Billet Fairlead template: (2016+ Land Cruiser only)
SDHQ-52-1650-200-E**

For questions or help with the installation, please email help@sdhqoffroad.com
Store front hours: Mon. – Fri. 8:00am – 5:30pm and Sat. 9:00am – 2:00pm Arizona Time.

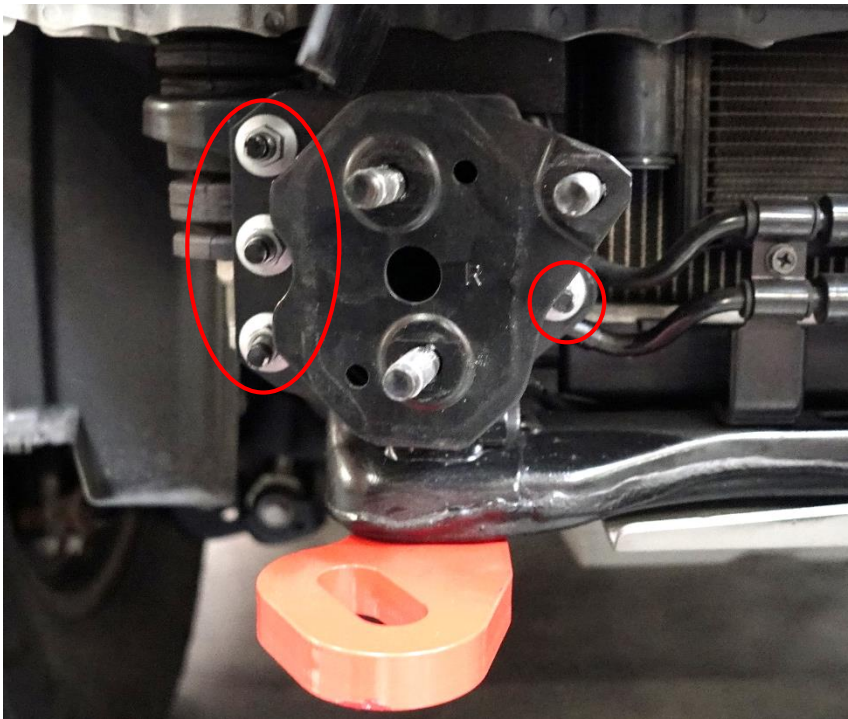
Installation Instructions:

1. Unbox your SDHQ Hidden Winch Mount and check over all the parts. Familiarize yourself with the parts and the diagrams. Gather all required tools and supplies for installing your SDHQ winch mount. Disconnect the vehicle's battery before starting.
2. **Preparing your Land Cruiser.** In order to install your hidden winch mount you need to remove the front bumper. Start by, removing (7) push-in clips from the radiator cowl and remove (Fig. 1). Using a panel removal tool to gently pry, remove both headlight trim pieces by starting at the grille and working your way out towards the headlights. Remove (3) 10mm bolts on top of the grille, then disconnect the TSS plug and the front facing camera from the inside of the grille (Fig. 2). The grille can now be removed by gently pulling towards you, the bottom of the grille clips into the top of the bumper.
3. Remove the (2) grey plastic plates that butt up to the headlight using a Philips head screwdriver. The large connector on the driver side of the grill opening needs to have the white portion flipped up before the connector can be removed (Fig. 3). Crimp and disconnect the headlight washer fluid line. With a Torx T30 bit, remove (3) bolts on each side connecting the bumper to the inner fender liner (Fig. 4). Remove (9) 10mm bolts securing the bottom of the bumper cover and the (4) push in clips securing the top of the bumper cover (Fig. 5). Remove the bumper cover assembly from the vehicle by gently pulling the sides of the bumper to unclip from the fender. Next, lift the bumper carefully away from the vehicle and double check for anything that is still connected.

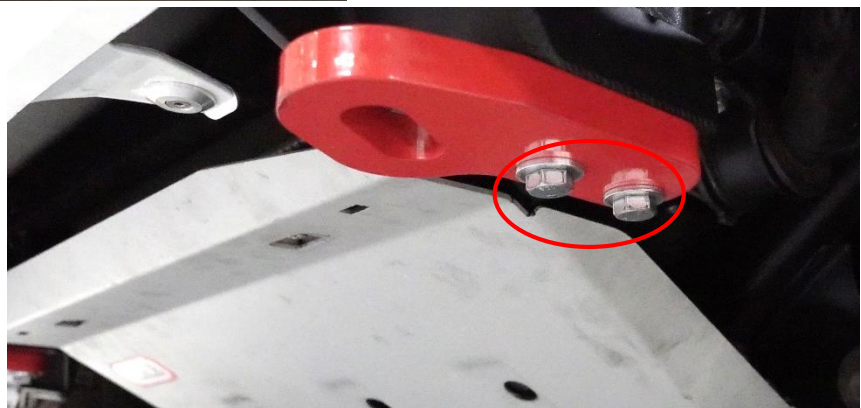


For questions or help with the installation, please email help@sdhqoffroad.com
Store front hours: Mon. – Fri. 8:00am – 5:30pm and Sat. 9:00am – 2:00pm Arizona Time.

4. With the bumper cover removed, you can now remove the aluminum crash bar and frame extensions. Using a 17mm socket and extension, remove all (6) nuts on the inside of the crash bar and take the crash bar off of the vehicle. Next, using a 14mm socket and extension, remove (4) nuts per frame extension and remove both extensions, save the 14mm nuts for later. Finally, remove the tow hooks and (2) 17mm bolts on either side, also saving the 17mm bolts for later.



NOTE: If your vehicle is equipped with the Harrop TVS2650 Supercharger kit, refer to the install instructions for the Harrop Supercharger Water Pump Relocation Bracket (SDHQ-52-1661-200) now.



For questions or help with the installation, please email help@sdhqoffroad.com
Store front hours: Mon. – Fri. 8:00am – 5:30pm and Sat. 9:00am – 2:00pm Arizona Time.

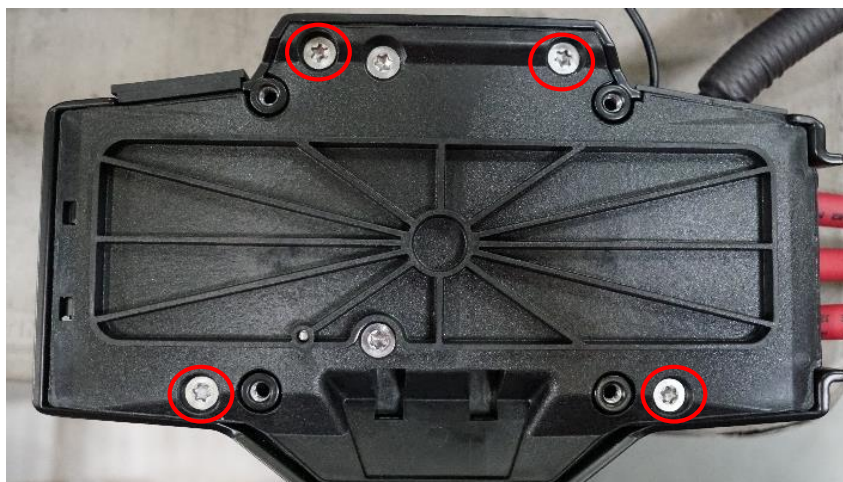
5. **Relocating your Control Box.** Unbox your Warn Winch and familiarize yourself with the parts included. Remove the black terminal cover on the top of the winch with your T25 Torx, remove the (3) ½" nuts and washers underneath, and set aside for future use.



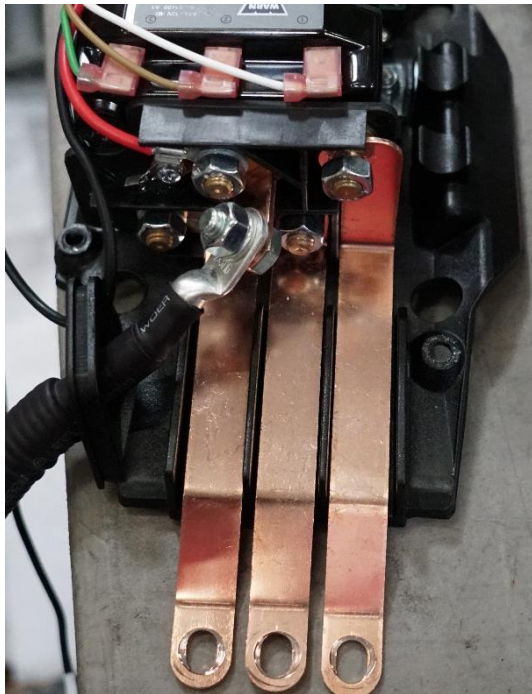
6. Next remove the 13mm bolt securing the small ground wire that goes to the control box, the 4 wire connector, and the (4) T30 Torx head screws that hold the control box to the winch. Remove control box from winch and discard screws. Align the 5/16" ring terminal on the pre-assembled 4" ground wire with Female Weather Pack Connector and secure using the 13mm bolt.



7. Remove the (4) T30 Torx head screws that hold the control box cover to base plate, remove control box cover and set aside.

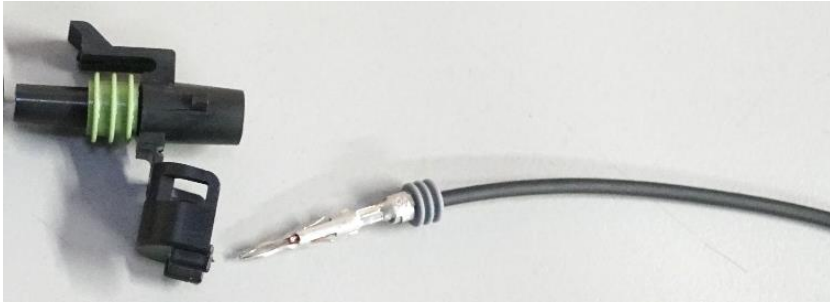


8. Take note the order of the (3) terminals on the control box solenoid compared with the (3) terminals on the winch. The cables are labeled for the corresponding connections. Starting from the top, remove the copper strip and replace with the cable provided in the SDHQ Zeon Relocation Kit. Take note that the bent terminal goes to the control box solenoid and the straight terminal goes to the winch (the provided rubber terminal boots go on the winch side). Repeat this step for the other two terminals, making sure that the cables are connected in the same order as the copper strips were.



9. Reassemble the control box, reversing **Steps 7**.

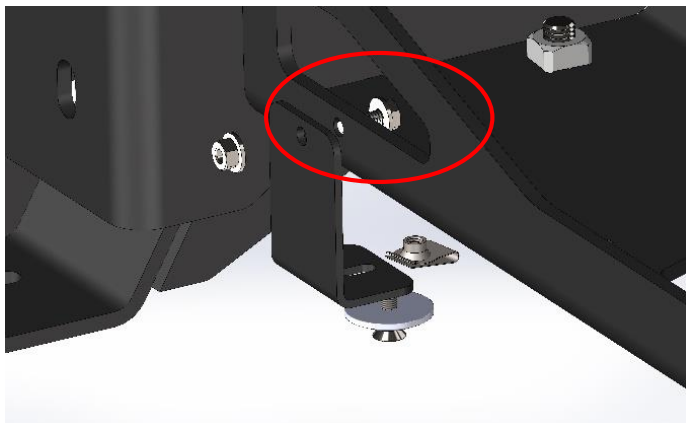
10. Cut the end of the Warn Control Box ground wire off near the ring terminal. Strip the cut wire back, place grey Weather Pack cable seal over the wire, then position the Male Weather pack Terminal over the exposed wire and crimp. Place the terminal and cable seal into the Male 1 contact Weather Pack connector (shown below).



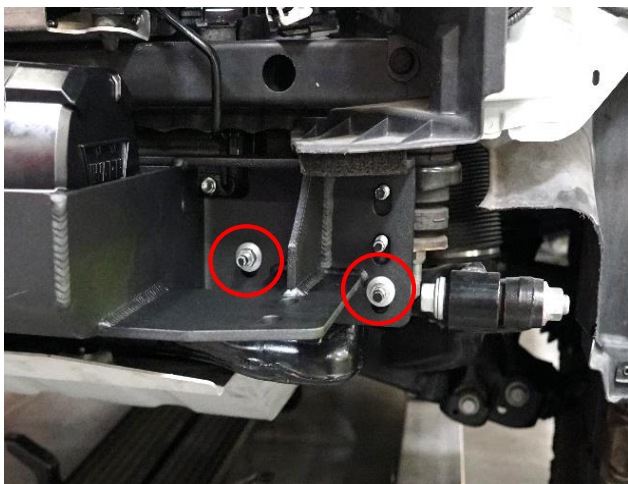
11. Use the supplied M6 bolts, 1/4" washers and spacers to attach the control box to the Passenger Side Bumper Support as pictured.



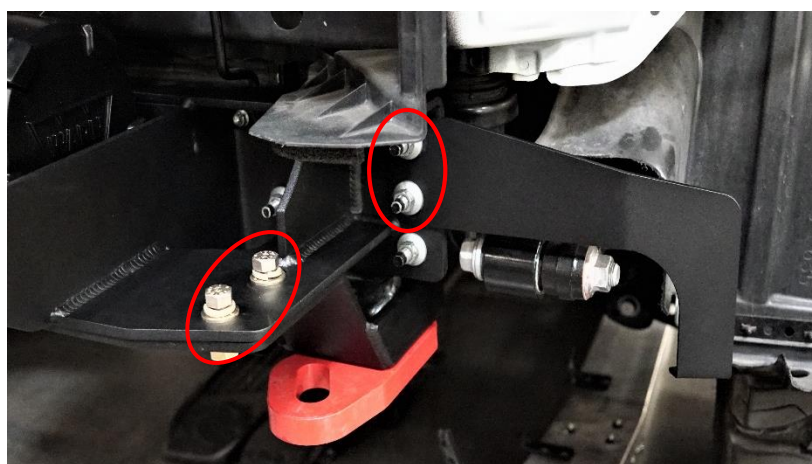
12. Before bolting in your winch, bolt on the (2) Lower Bumper supports to the back of the winch mount using the supplied 1/4"-20 x 3/4" bolts, (4) 1/4" washers and 1/4"-20 nuts. Slip on (1) 1/4"-20 Clip-on Barrel nut to each of the lower mounts. Then, using the hardware supplied with your winch, install the winch onto the winch mount per the manufactures instructions. Flipping your winch upside down and placing the main mount on top will allow for the (4) mounting holes to be aligned and accessible. Plug in the supplied 4 pin harness extension and secure using the (3) push in zip ties that will attach to the back of the winch mount.



13. Installing the Winch Mount. Align your SDHQ winch mount with factory frame ends and thread the bottom two factory nuts on either side keeping the mount centered to the vehicle. Then bolt on the lower support mounts and factory tow hooks using the (2) factory bolts to the frame, thread the 7/16" bolts and washers to the winch mount holes with weld nuts. **Note:** You may want to support the loose winch mount with another person or a floor jack while you attach the lower mounts to the vehicle.



14. Now that the winch mount is loosely secured to the vehicle, mount the Outer Bumper Supports on the remaining exposed frame studs, align the slots on the bumper supports with the slots on the winch mount and tighten them in place with the factory frame nuts. Next, using (2) 1/2"-13 bolts, (4) washers and (2) 1/2" Lock nuts per side; secure the Winch Mount and Lower Mount together through the slots. (Note: The Passenger Bumper Support will have the winch control box mounted to it as well.)

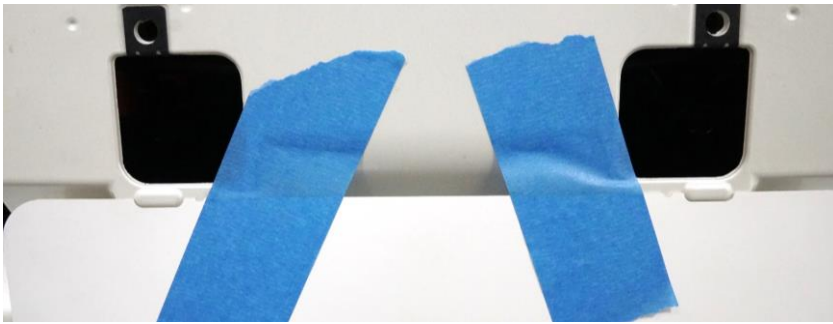


15. With the control box and winch mount mounted, finish making all of your electrical connections, start with the Weather Pack connectors, the 48" extended 4-pin harness and connect to the control box. Next attach each cable to their corresponding post on the winch and cover with the attached boot. Then run the power leads from the winch controller to your battery terminals, leaving the battery disconnected. Finish by using the supplied zip ties to secure all wiring. Install the supplied Factor 55 Fairlead with 7/16" Grade 8 Hardware.



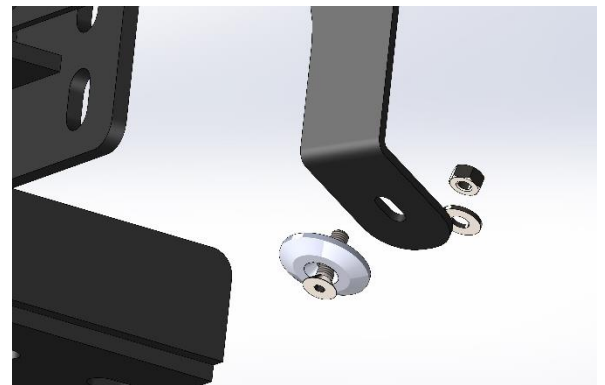
For questions or help with the installation, please email help@sdhqoffroad.com
Store front hours: Mon. – Fri. 8:00am – 5:30pm and Sat. 9:00am – 2:00pm Arizona Time.

16. Factory Bumper Cutting. Prepare your bumper for cutting by placing it on a large flat surface, tape the cutting template to the bumper as shown. The template uses the two notches where the front license plate mounts to locate the center for the cut. Trace the outline of the template with a permanent marker and cut the pattern on the inside of the traced line. Cut on the conservative side and check against the fairlead and make adjustments from there.



17. Install the winch line to the winch drum per the manufacturer's instructions.

18. With the bumper cut and winch mount installed, start with the factory frame nuts and tow hook bolts and torque to factory spec. Next, fully tighten the 1/2" Grade 8 Bolts. Reinstall the factory bumper and check alignment of fairlead. Once done, bolt the bumper to the Lower and Outer bumper supports using supplied body washers and Stainless Steel bolts, the Outer bumper supports use the remaining 1/4"-20 nuts and 1/4" washers.



19. You can now reinstall everything left in reverse order that you removed it, feeding the winch rope through the fairlead hole on the bumper. Reconnect your battery terminals and power up your winch to spool your rope per the manufacturer's recommendations.

20. Congratulations! You have completed the install of the SDHQ Built Hidden Winch Mount for your Toyota Land Cruiser!



Technical Service Bulletin for 52-1650-200 made before 06/2022

There is a potential issue with the Warn Zeon Control Box Mount in our Landcruiser Hidden Winch Mount System. Under extreme weather conditions or when submerged, the control box can fill with water and submerge the internals due to a lack of drainage. While the control box components are fully sealed, the box is not. Electrolysis occurs between the positive power cable and grounded element when submerged in water. This electrolysis reaction will corrode the internal connections of the control box and eventually can cause it to become non-operational. This can also cause a parasitic drain on the battery.

Solution 1 does not require removal. Using a ¼” or larger-sized drill bit, drill a drain hole in the cover of the control box that will allow for water to drain harmlessly out. To avoid drilling past the thickness of the case and contacting components inside, use a drill bit stop to only allow ¼” depth. We recommend drilling at the backside of the control box nearest the switch, towards the low point of the case.

Solution 2 involves completely removing the front facia and the Control Box Relocation Mount. The old Control Box Mount is no longer used, and the NEW Passenger Side Bumper Support now incorporates the control box mounted vertically to allow for drainage. The new mount uses the same hardware, so those converting to the new style do not require any additional hardware.

*****Double check all hardware is installed correctly and tight*****

*****Re-torque ALL bolts after 100 miles*****



190 S McQueen Rd
Ste 109 Gilbert, AZ 85233
www.sdhqoffroad.com

Follow us on:



Facebook



Instagram

For questions or help with the installation, please email help@sdhqoffroad.com
Store front hours: Mon. – Fri. 8:00am – 5:30pm and Sat. 9:00am – 2:00pm Arizona Time.