



SDHQ Motorsports
190 S McQueen Rd
Ste 109 Gilbert, AZ 85233
Phone: 480-633-2929

Product Packing List

Product: SDHQ-52-1206-200

Description: 2016-2021 Toyota 200 Series Land Cruiser and Lexus LX 570 A-Pillar Light Mounts

_____ (1) Driver Side Light Mount	SDHQ-52-1206-200-A
_____ (1) Passenger Side Light Mount	SDHQ-52-1206-200-B
_____ (1) Driver Side Rubber Isolator	SDHQ-52-1206-200-C
_____ (1) Passenger Side Rubber Isolator	SDHQ-52-1206-200-D

Inspected and Packaged By: _____ Date: _____

For questions or help with the installation, please call SDHQ Offroad @ 480-633-2929
Mon.-Fri. 8:00am-5:30pm and Sat. 8:00am-3:30pm Arizona Time. www.sdhqoffroad.com

**For questions or help with the installation, please call SDHQ Offroad @ 480-633-2929
Mon.–Fri. 8:00am–5:30pm and Sat. 8:00am–3:30pm Arizona Time. www.sdhqoffroad.com**



SDHQ Motorsports
190 S McQueen Rd
Ste 109 Gilbert, AZ 85233
Phone: 480-633-2929

INSTALLATION INSTRUCTIONS

Product: SDHQ-52-1206-200

Description: 2016-2021 Toyota 200 Series Land Cruiser and Lexus LX 570 A-Pillar Light Mounts



Parts List	Hardware List	Required Tools
(1) Driver Side Mount SDHQ-52-1206-200-A (1) Passenger Side Mount SDHQ-52-1206-200-B (1) Driver Side Rubber Isolator SDHQ-52-1206-200-C (1) Passenger Side Rubber Isolator SDHQ-52-1206-200-D	N/A	12mm Socket/Wrench Masking Tape Loctite Hood Prop
Tech Notes		
*Special Notes: Windshield Wipers CANNOT be operated with Hood open. Approx. Install Time: 1 Hour (not including wiring)		

READ ALL INSTRUCTIONS THOROUGHLY FROM START TO FINISH BEFORE BEGINNING INSTALLATION!

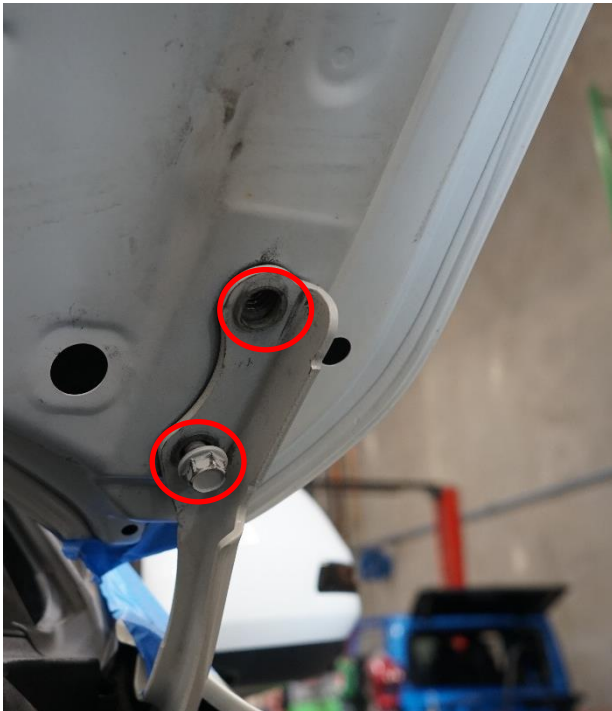
For questions or help with the installation, please call SDHQ Offroad @ 480-633-2929
Mon.-Fri. 8:00am-5:30pm and Sat. 8:00am-3:30pm Arizona Time. www.sdhqoffroad.com

Installation Instructions:

1. Unbox your SDHQ 200 Series Land Cruiser/LX 570 A-Pillar Light Mounts, noting which one is the driver side mount and the passenger side mount. Wipe down the surface of the A-pillar as shown and apply the sticky side of the rubber isolators to the A-pillar, the bottom edge of the isolator should line up with the bend 2nd from the top.



2. Prop open your hood and start on the driver side hood hinge with the (2) 12mm bolts, mark the hood and hinge to ensure the hood is still aligned correctly after install. Remove the front bolt attaching the hood to the hinge. Next loosen but do not remove the rear bolt. Position your driver side bracket over the hood hinge aligning the front mounting hole while the rear of the mount is angled away allowing access to the rear bolt. Insert the front bolt through the bracket and loosely thread back in still allowing the mount to rotate.



3. Remove the rear bolt and rotate the mount to align with its hole. Insert bolt through the rear hole of the mount and thread into the hood. Push the mount forward until the rubber isolator is touching the hood. Tighten down bolts while aligning hinge with paint outline of previous location on the hood.



4. Repeat Steps 2-3 for the Passenger Side. Enjoy your SDHQ 200 Series Land Cruiser A-Pillar Light Mounts!

Double check all hardware is installed correctly and tight

Re-torque ALL bolts after 100 miles



190 S McQueen Rd
Ste 109 Gilbert, AZ 85233
Phone: 480-633-2929 | Fax: 480-633-1791
www.sdhqoffroad.com

Follow us on:



Facebook



Instagram

For questions or help with the installation, please call SDHQ Offroad @ 480-633-2929
Mon.–Fri. 8:00am–5:30pm and Sat. 8:00am–3:30pm Arizona Time. www.sdhqoffroad.com