



**SDHQ Motorsports**  
190 S McQueen Rd  
Ste 109 Gilbert, AZ 85233  
Phone: 480-633-2929

---

## Product Packing List

**Product:** SDHQ-52-1103-200

**Description:** 2008-2021 Land Cruiser and Lexus LX 570  
ARB Air Compressor Mount

_____ (1) Main Compressor Mount	SDHQ-52-1103-200-A
_____ (1) Rear Support Bracket	SDHQ-52-1103-200-B
_____ (1) Upright Support Bracket	SDHQ-52-1103-200-C
_____ (1) Hardware Package	SDHQ-52-1103-200-D
_____ (2) M6 - 1.0 x 20mm S.S. Serrated Flange Head Bolt	
_____ (2) M6 - 1.0 x 20mm S.S. Hex Head Bolts	
_____ (4) ¼" S.S. Washers	
_____ (2) M6 - 1.0 S.S. Serrated Flange Nuts	
_____ (2) M6 - 1.0 S.S. Nylock Nut	
_____ (1) Quick Disconnect Hose Coupler	
_____ (1) Brass Through Wall Coupler	
_____ (2) ¼" OD Push to Connect Tube Fitting	
_____ (1) Hose Coupler Dust Cap	
_____ (1) 15" of ¼" Air Hose	
_____ (1) Tube of Blue Loctite	

Inspected and Packaged By: \_\_\_\_\_ Date: \_\_\_\_\_

For questions or help with the installation, please call SDHQ Offroad @ 480-633-2929  
Mon.-Fri. 8:00am-5:30pm and Sat. 8:00am-3:30pm Arizona Time. [www.sdhqoffroad.com](http://www.sdhqoffroad.com)





SDHQ Motorsports  
 190 S McQueen Rd  
 Ste 109 Gilbert, AZ 85233  
 Phone: 480-633-2929

## INSTALLATION INSTRUCTIONS

**Product:** SDHQ-52-1103-200

**Description:** 2008-2021 Land Cruiser ARB Compressor Mount



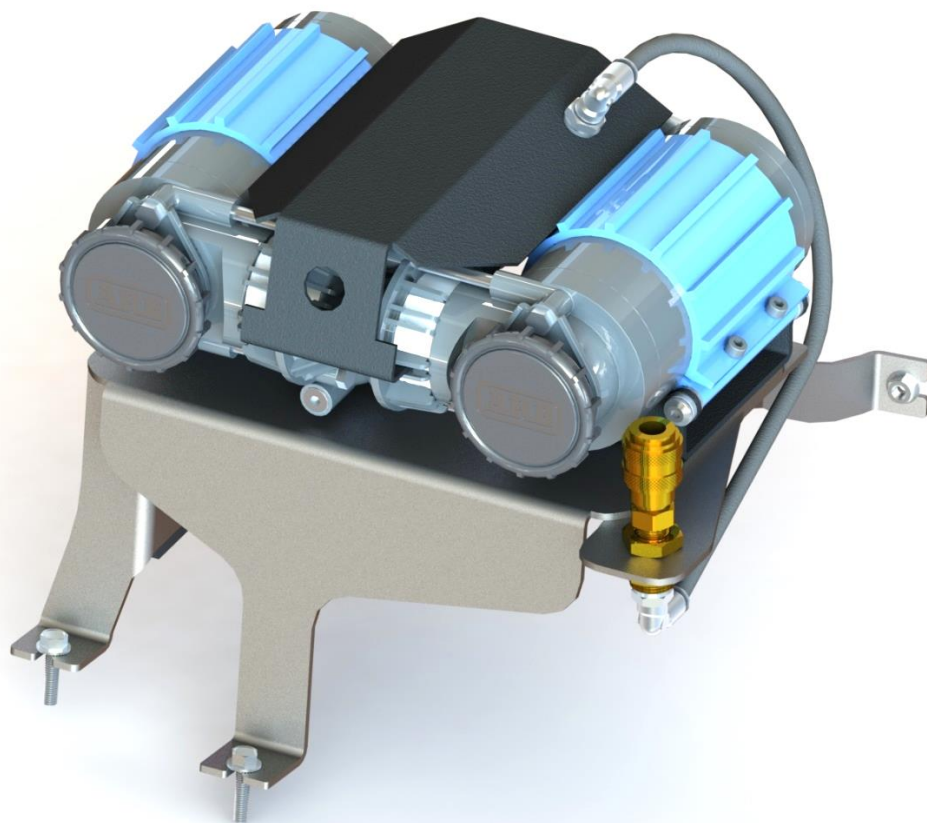
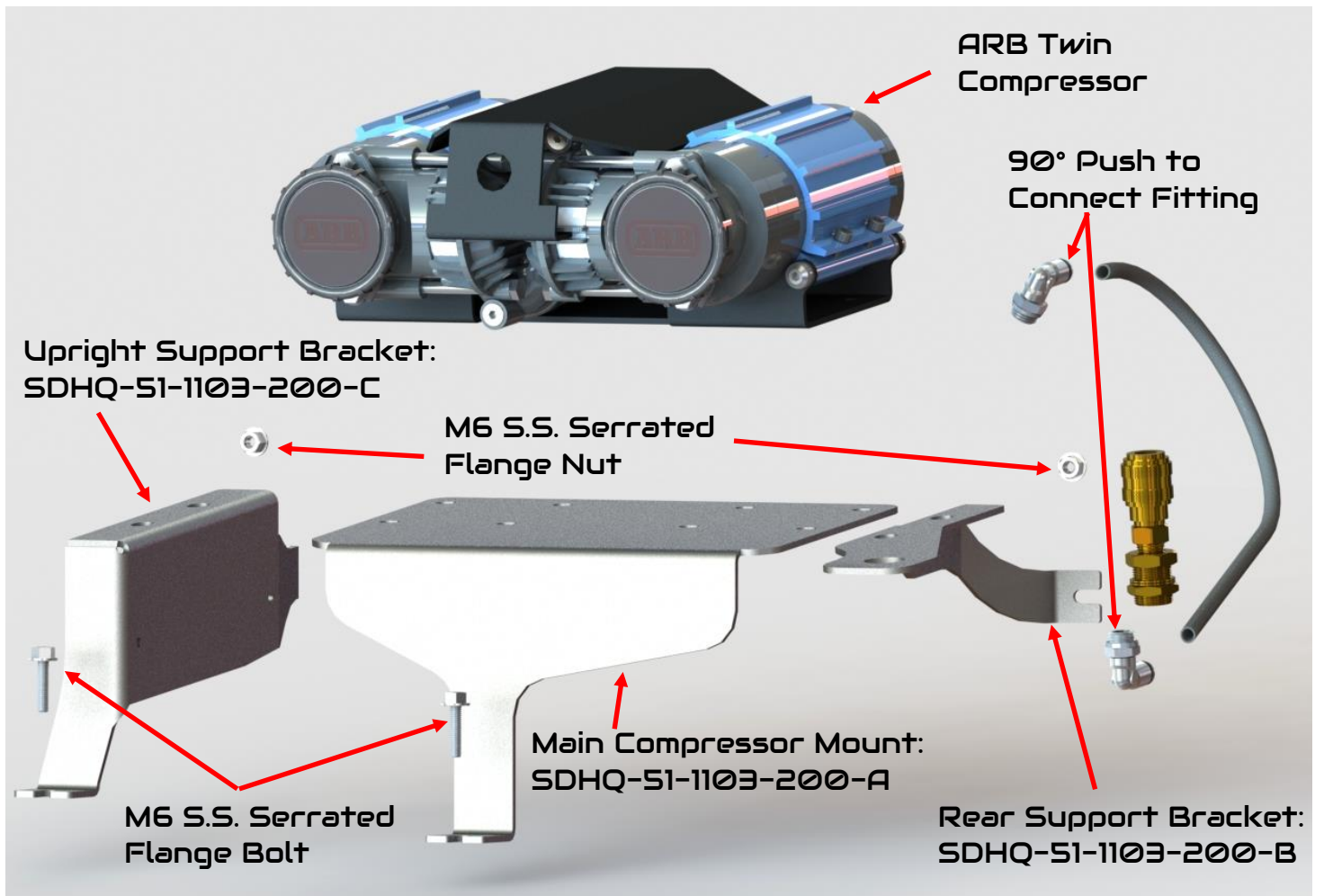
<b>Parts List</b>	<b>Hardware List</b>	<b>Required Tools</b>
(1) Main Compressor Mount SDHQ-52-1103-200-A (1) Rear Support Bracket SDHQ-52-1103-200-B (1) Upright Support Bracket SDHQ-52-1103-200-C (1) Hardware Package SDHQ-52-1103-200-D	(2) M6 – 1.0 x 20mm S.S. Serrated Flange Head Bolt (2) M6 – 1.0 x 20mm S.S. Hex Head Bolts (2) M6 – 1.0 S.S. Serrated Flange Nuts (4) ¼” S.S. Washers (2) M6 – 1.0 S.S. Nylock Nut (1) Quick Disconnect Hose Coupler (1) Brass Through Wall Coupler (2) ¼” OD Push to Connect Tube Fitting (1) Hose Coupler Dust Cap (1) 15” of ¼” Air Hose (1) Tube of Blue Loctite	¼” Flex-head Ratchet 3”, 6”, 9” Ratchet Extension 10mm (wobble) socket Wobble Adapter 15mm, 11/16”, 7/8” Wrenches Teflon Tape/Thread Sealer

### **Tech Notes**

Fits single or twin air compressors.  
 Use Teflon tape or thread sealant on all threaded air fittings.  
 Use blue Loctite on supplied Stainless Steel (S.S.) Hardware.  
 See Page 7 for Diagrams of ARB Single Compressor Mounting options.  
**Approx. Install Time: 1 Hour (not including wiring or plumbing)**

**\*\*\*READ ALL INSTRUCTIONS THOROUGHLY FROM START TO FINISH BEFORE BEGINNING INSTALLATION!\*\*\***

For questions or help with the installation, please call SDHQ Offroad @ 480-633-2929  
 Mon.–Fri. 8:00am–5:30pm and Sat. 8:00am–3:30pm Arizona Time. [www.sdhqoffroad.com](http://www.sdhqoffroad.com)

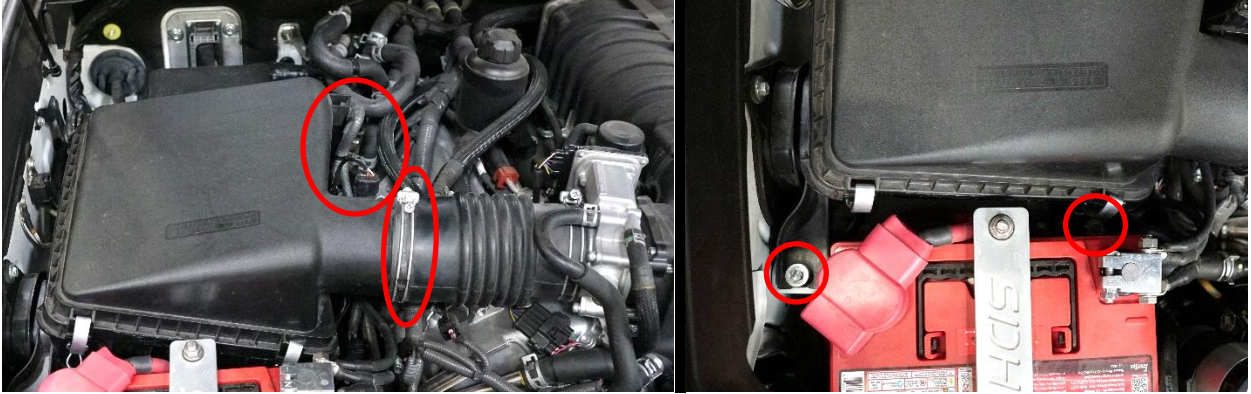


For questions or help with the installation, please call SDHQ Offroad @ 480-633-2929  
 Mon.–Fri. 8:00am–5:30pm and Sat. 8:00am–3:30pm Arizona Time. [www.sdhqoffroad.com](http://www.sdhqoffroad.com)



## Installation Instructions:

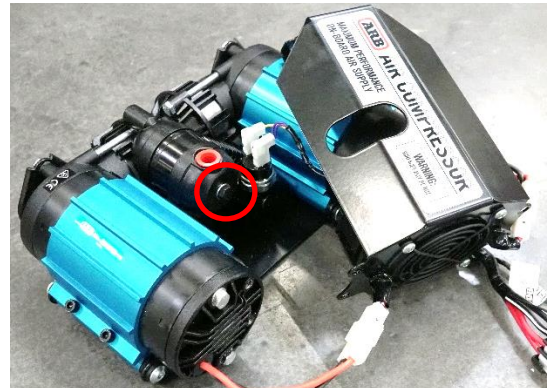
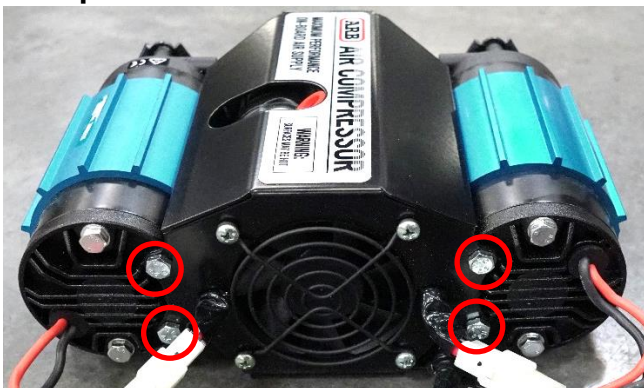
1. Gather all required tools for the installation of your new SDHQ ARB Compressor Mount. Unbox your ARB Compressor Mount and verify all parts are present. Familiarize yourself with the diagrams on page 4.
2. **Preparing your vehicle.** In your engine bay, use a 10mm socket to loosen the hose clamp on the intake tube to the air box. Unclip the MAF sensor and wire harness from the air box and move them to the side. Remove the (3) 10mm bolts holding in the intake air box, (2) in the front (1) in the rear, and take it out.



3. Remove the (1) 10mm bolt holding the horn to the passenger fender and unplug it placing it to the side. Lastly remove the (1) 10mm nut on the driver side of the relay box keeping the factory bracket on the stud.

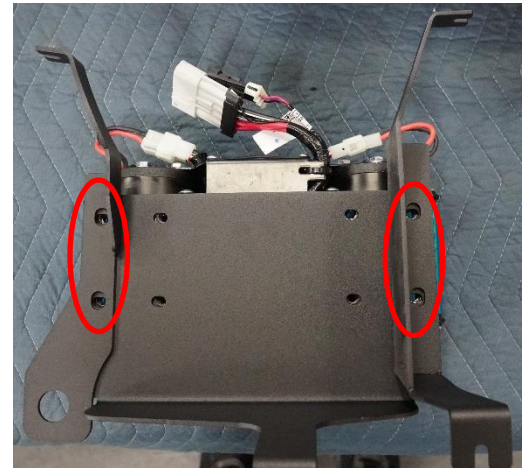


4. **Preparing the ARB twin compressor.** See step 2.2 in your ARB compressor install instructions. Remove the (4) 10mm bolts holding on the ARB compressor cover and take it off. Then loosen the (1) 10mm bolt on the compressor outlet port. This will allow you to rotate the outlet port to the side position. Tighten outlet port bolt and reinstall the cover plate with the (4) 10mm bolts. Attach (1) of the 1/4" OD Push to Connect fittings to the exhaust port using a 19/32" wrench. **\*Failure to change compressor outlet port angle will cause contact with the hood post installation.\***

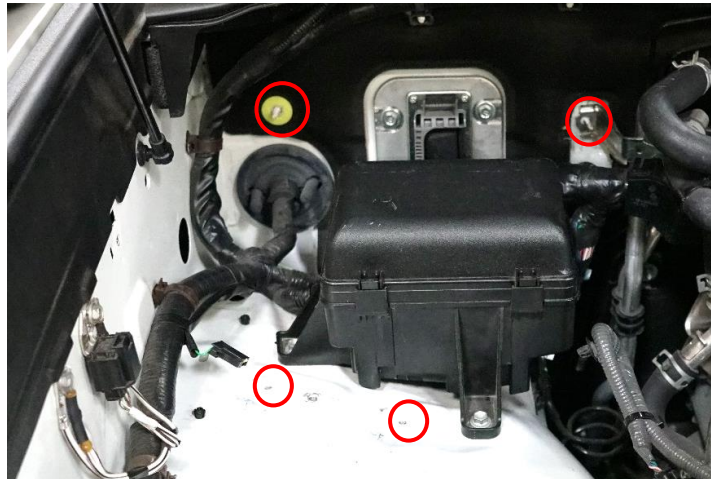


For questions or help with the installation, please call SDHQ Offroad @ 480-633-2929  
Mon.–Fri. 8:00am–5:30pm and Sat. 8:00am–3:30pm Arizona Time. [www.sdhqoffroad.com](http://www.sdhqoffroad.com)

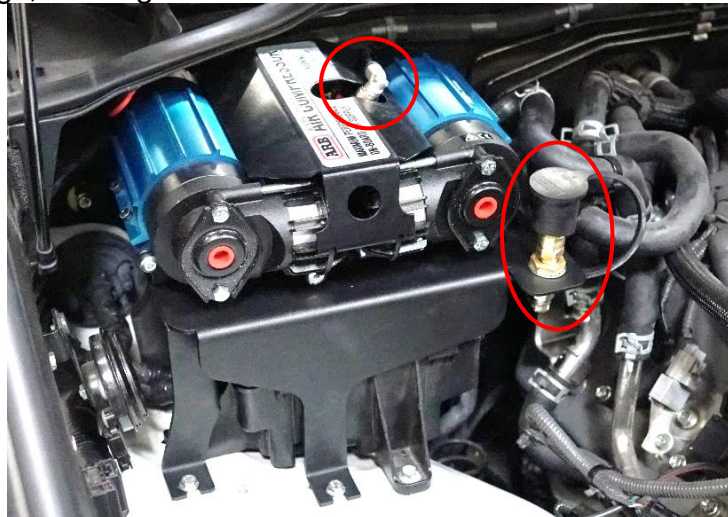
5. Flip the ARB compressor over with the mounting holes facing up and place the Compressor Mount on top of it. Then place the support brackets on top of the mounting plate aligning the (4) mount holes. Using the mounting hardware supplied with your ARB Compressor, bolt the (4) 10mm bolts through the mount leaving them loose for easy to fitment into the vehicle. ARB single compressor fits on either side of the mount, see Page 7 diagrams. Use the supplied (2) M6 Hex Bolts, 1/4" washers and M6 nylock nut for opposite support bracket.



6. **Mounting the compressor.** Place your assembled compressor mount into the mounting location as shown below. Using the supplied hardware, bolt in the mount using (2) M6 S.S. serrated flange bolts towards the front of the mount and (2) M6 S.S. serrated flange nuts on the factory studs at the rear of the mount on the firewall.

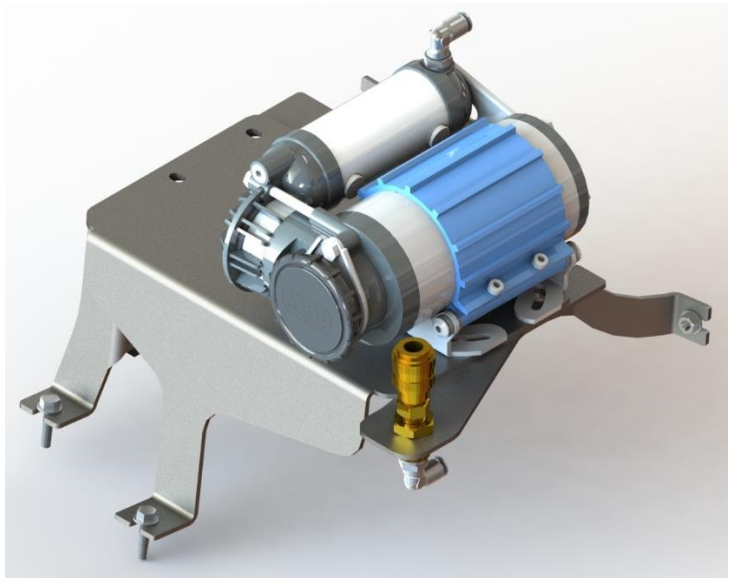
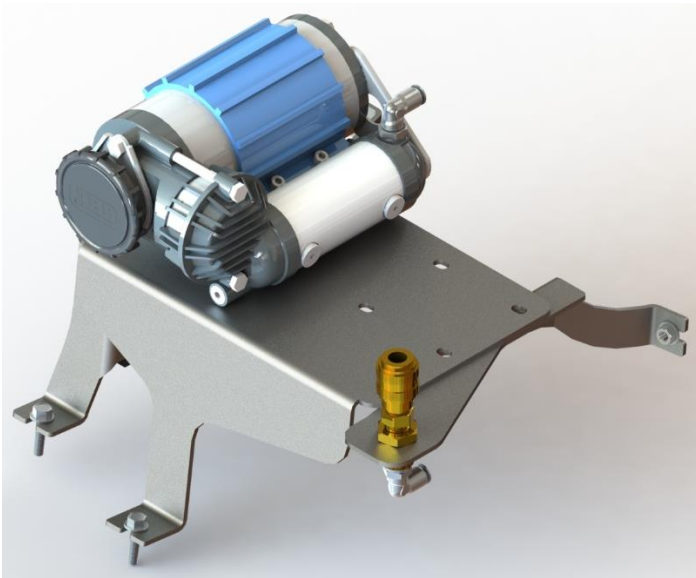


7. Tighten down the compressor mounting bolts and double check the supplied S.S. hardware is fully tightened. Thread the air quick disconnect on top of the coupler tightening with an 11/16" wrench. Thread on the push to connect fitting to the bottom of the brass through wall coupler tightening with a 15mm wrench. Then install the brass through wall coupler to the mount using 7/8" wrenches to tighten. Install the Hose Coupler Dust Cap and push the 15" air hose into both push fittings, running the hose under and around the back of the mount.





8. Refer to the ARB wiring instructions to properly wire your air compressor, then reinstall your intake and horn. Enjoy your new SDHQ Built ARB Compressor Mount!



Installed on a 2019 Lexus LX 570.



For questions or help with the installation, please call SDHQ Offroad @ 480-633-2929  
Mon.-Fri. 8:00am-5:30pm and Sat. 8:00am-3:30pm Arizona Time. [www.sdhqoffroad.com](http://www.sdhqoffroad.com)

**\*\*\*Double check all hardware is installed correctly and tight\*\*\***

**\*\*\*Re-torque ALL bolts after 100 miles\*\*\***



190 S McQueen Rd  
Ste 109 Gilbert, AZ 85233  
Phone: 480-633-2929 | Fax: 480-633-1791  
[www.sdhqoffroad.com](http://www.sdhqoffroad.com)

Follow us on:



Facebook



Instagram

For questions or help with the installation, please call SDHQ Offroad @ 480-633-2929  
Mon.–Fri. 8:00am–5:30pm and Sat. 8:00am–3:30pm Arizona Time. [www.sdhqoffroad.com](http://www.sdhqoffroad.com)