



SDHQ Motorsports
190 S McQueen Rd
Ste 109 Gilbert, AZ 85233
www.SDHQoffroad.com

Product Packing List

Product: SDHQ-50-1402-U1

Description: SDHQ Built Toyota 22+ Tundra, 23+ Sequoia and 24+ Tacoma Rear Shock Guards

- | | |
|---|--------------------|
| _____ (2) Shock Guard | SDHQ-50-1402-U1-A |
| _____ (2) Bolt Guard | SDHQ-50-1402-U1-B |
| _____ (1) Hardware Package | SDHQ-50-1402-U1-HP |
| _____ (2) M12-1.25 x 30mm Class 10.9 Hex Flange Head Bolt | |
| _____ (2) 3/8"-16 x 3.75" Grade 8 Hex Flange Head Bolt | |
| _____ (4) 3/8"-16 x 1" Grade 8 Hex Flange Head Bolt | |
| _____ (4) 3/8"-16 Grade 8 Nylon Flange Lock Nut | |
| _____ (4) 3/8" Oversized Washer | |

Inspected and Packaged By: _____ Date: _____

For questions or help with the installation, please email help@sdhqoffroad.com
Store front hours: Mon. – Fri. 8:00am – 5:30pm and Sat. 9:00am – 2:00pm Arizona Time.



SDHQ Motorsports
 190 S McQueen Rd
 Ste 109 Gilbert, AZ 85233
www.SDHQoffroad.com

INSTALLATION INSTRUCTIONS

Product: SDHQ-50-1402-U1

Description: SDHQ Built Toyota 22+ Tundra, 23+ Sequoia and 24+ Tacoma Rear Shock Guards



Parts List	Hardware List	Required Tools
(1) SDHQ Shock Guard SDHQ-50-1402-U1-A (1) SDHQ Bolt Guard SDHQ-50-1402-U1-B (1) Hardware Package SDHQ-50-1402-U1-HP	(2) M12-1.25 x 30mm Class 10.9 Hex Flange Head Bolt (2) 3/8"-16 x 3.75" Grade 8 Hex Flange Head Bolt (4) 3/8"-16 x 1" Grade 8 Hex Flange Head Bolt (4) 3/8"-16 Grade 8 Nylon Flange Lock Nut (4) 3/8" Oversized Washer	9/16" Wrench 17mm and 9/16" Sockets Ratchet Torque Wrench

Tech Notes

** Use Red Loctite on Fasteners **

Approx. Install Time: 15 minutes

READ ALL INSTRUCTIONS THOROUGHLY FROM START TO FINISH BEFORE BEGINNING INSTALLATION!

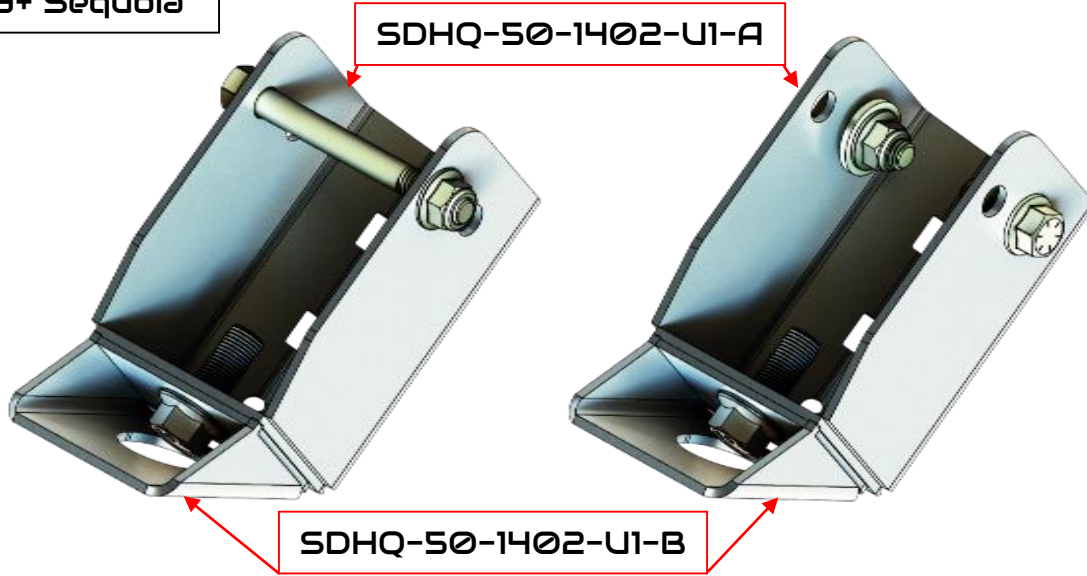
For questions or help with the installation, please email help@sdhqoffroad.com

Store front hours: Mon. – Fri. 8:00am – 5:30pm and Sat. 9:00am – 2:00pm Arizona Time.

22+ Tundra &
23+ Sequoia

SDHQ-50-1402-U1

24+ Tacoma

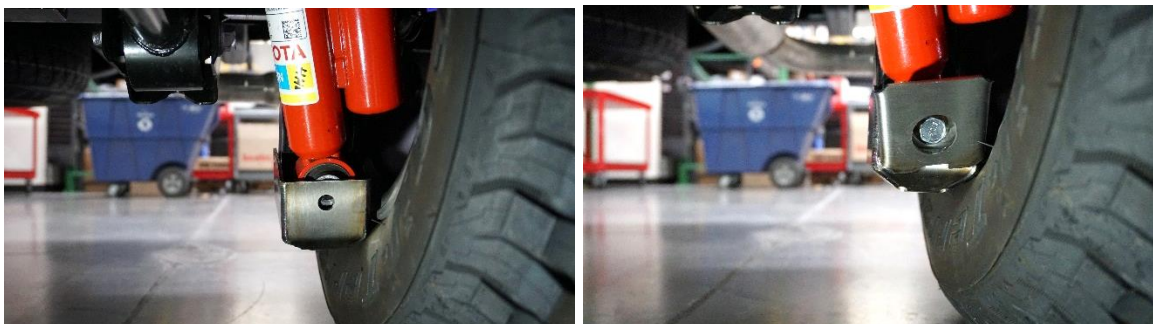


Installation Instructions:

1. Un-box your SDHQ Built Rear Shock Guards and lay out the parts. Verify all parts are present and familiarize yourself with all the parts. If installing on a 24+ Tacoma, use a jack to raise the rear axle off of the ground and place jack stands under the rear axle to allow the rear wheels to be removed.
2. Using a 17mm socket remove the driver side rear shock bolt. The rear shock will not extend when the bolt is removed.



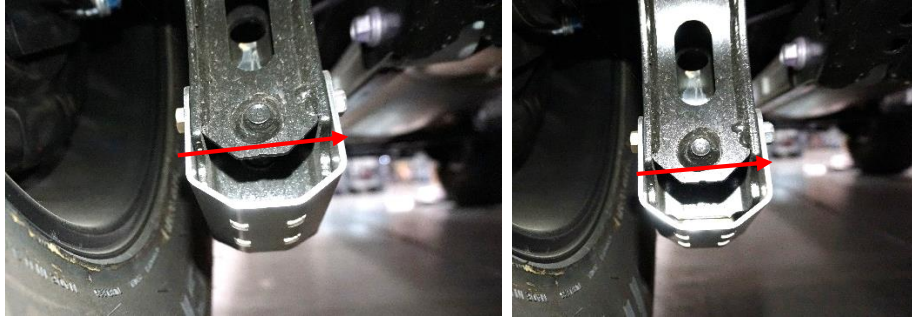
3. Slide (1) Shock Guard over the driver side rear shock and shock mount as shown. Place (1) M12 bolt through the Bolt Guard and put Red Loctite on the threads then start threading into the shock mount. Using a 17mm socket tighten the M12 bolt but leave loose.



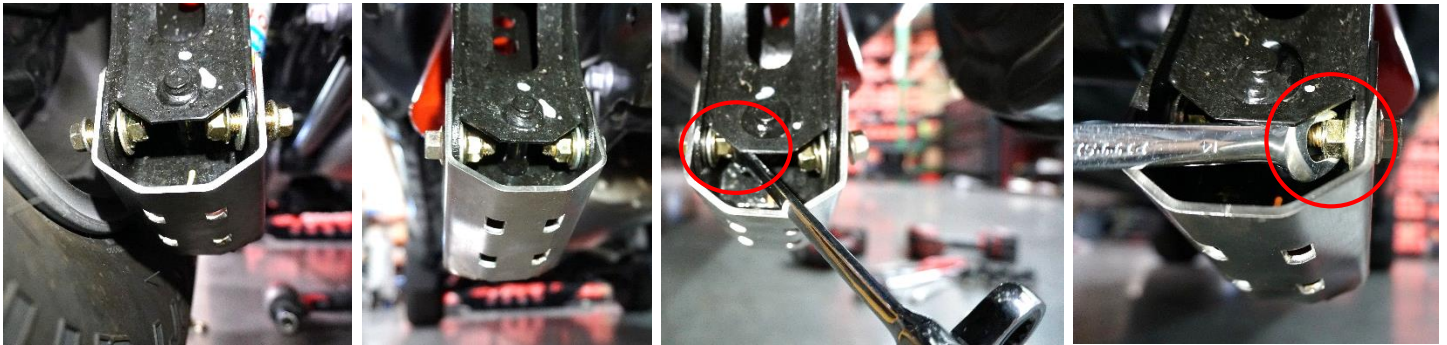
For questions or help with the installation, please email help@sdhqoffroad.com
Store front hours: Mon. – Fri. 8:00am – 5:30pm and Sat. 9:00am – 2:00pm Arizona Time.

4. **For Tundra and Sequoia installation.** Place (1) 3/8" x 3.75" Flange Bolt through the upper rear hole from the outside. Thread on (1) 3/8" Flange Nut onto the end of the 3/8" bolt.
For Tacoma installation. Place (1) 3/8" x 1" Flange Bolt through the lower rear hole from the outside, put (1) 3/8" Washer over the bolt, start (1) 3/8" nut onto the bolt. Place (1) 3/8" x 1" Flange Bolt through the lower rear hole from the inside, put (1) 3/8" Washer over the bolt, start (1) 3/8" nut onto the bolt.

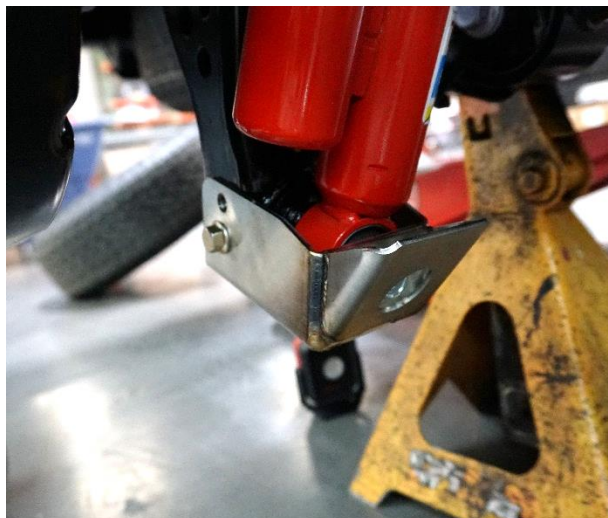
Tundra & Sequoia



Tacoma



5. Using a 9/16" socket and a torque wrench, torque the 3/8" bolt to 20 Ft-Lb. Using a 17mm socket and a torque wrench, torque to the M12 bolt to 72 Ft-Lb.
6. Repeat steps 2-5 to install the passenger side shock guard.
7. Install is complete, enjoy your SDHQ Built Rear Shock Guards.



For questions or help with the installation, please email help@sdhqoffroad.com
Store front hours: Mon. – Fri. 8:00am – 5:30pm and Sat. 9:00am – 2:00pm Arizona Time.

Double check all hardware is installed correctly and tight

Re-torque ALL bolts after 100 miles



190 S McQueen Rd
Ste 109 Gilbert, AZ 85233
www.sdhqoffroad.com

Follow us on:



Facebook



Instagram

For questions or help with the installation, please email help@sdhqoffroad.com
Store front hours: Mon. – Fri. 8:00am – 5:30pm and Sat. 9:00am – 2:00pm Arizona Time.