



SDHQ Motorsports
190 S McQueen Rd
Ste 109 Gilbert, AZ 85233
Phone: 480-633-2929

Product Packing List

Product: *SDHQ-37-1206-S2*

Description: **2007-2018 Mercedes Sprinter Van A-Pillar
Light Mounts**

_____ (1) Driver Side A-Pillar Mount

SDHQ-37-1206-S2-A

_____ (1) Passenger Side A-Pillar Mount

SDHQ-37-1206-S2-B

Inspected and Packaged By: _____ **Date:** _____

For questions or help with the installation, please call SDHQ Offroad @ 480-633-2929
Mon.-Fri. 8:00am-5:30pm and Sat. 8:00am-3:30pm Arizona Time. www.sdhqoffroad.com



SDHQ Motorsports
190 S McQueen Rd
Ste 109 Gilbert, AZ 85233
Phone: 480-633-2929

INSTALLATION INSTRUCTIONS

Product: SDHQ-37-1206-S2

Description: 2007-2018 Mercedes Sprinter Van A-Pillar
Light Mounts



<u>Parts List</u>	<u>Hardware List</u>	<u>Required Tools</u>
(1) Driver Side A-Pillar Mount SDHQ-37-1206-S2 (1) Passenger Side A-Pillar Mount SDHQ-37-1206-S2	N/A	13mm Socket Ratchet Hood Prop Masking Tape Marker

Tech Notes

Mount all lights using the hole. Use the slot for larger lights if applicable.

Do **NOT** use the Windshield Wipers if the hood is open. The Wipers will contact the mount/light.

Use a hood prop and mark the outline of hood hinges to assist in realignment during install.

Approx. Install Time: 1 Hour

For questions or help with the installation, please call SDHQ Offroad @ 480-633-2929
Mon.-Fri. 8:00am-5:30pm and Sat. 8:00am-3:30pm Arizona Time. www.sdhqoffroad.com



Driver Side Shown

*****READ ALL INSTRUCTIONS THOROUGHLY FROM START TO FINISH BEFORE BEGINNING INSTALLATION!*****

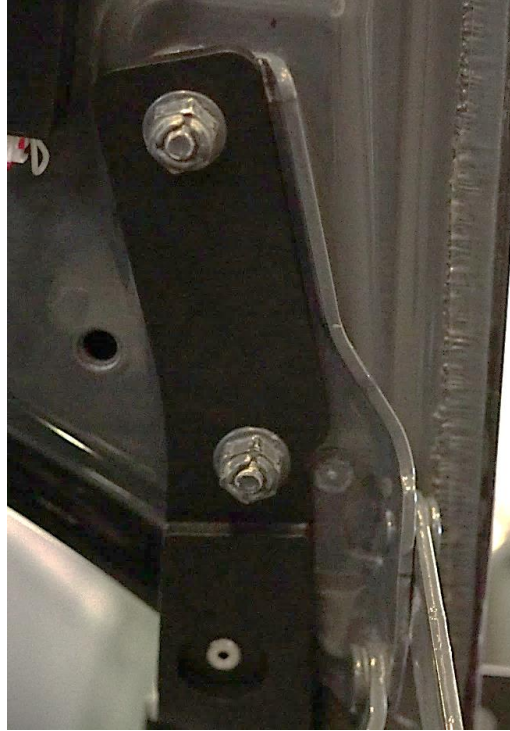
Installation Instructions:

1. Unbox your 2007-2018 Mercedes Sprinter Van A-Pillar Light Mounts. Verify all parts are present.
2. Open your hood and prop it open with a hood prop. Using masking tape, tape off the outer rear edges of the hood by where you will be working.
3. With a 13mm socket and ratchet, remove the (2) driver side hood hinge bolts, circled below.
****Mark the outline of your hood hinges to assist in alignment during installation. ****



For questions or help with the installation, please call SDHQ Offroad @ 480-633-2929
Mon.–Fri. 8:00am–5:30pm and Sat. 8:00am–3:30pm Arizona Time. www.sdhqoffroad.com

4. Position the driver side light mount as shown below. Thread the factory nuts back onto the studs. Use the outline of the paint on the hood to align the hood back into factory position and tighten the factory nuts.



5. Repeat Steps 3-4 for the passenger side light mount.
6. Install lights using the hole, secure bigger lights with the slot if applicable. Position the lights as desired. When wiring your lights, avoid routing your wire between the light mount and hood hinge. There is a stop for the hood that could ruin your wire as shown below. Enjoy your new SDHQ A-Pillar Light Mounts!



*****Double check all hardware is installed correctly and tight*****

*****Re-torque ALL bolts after 100 miles*****



190 S McQueen Rd
Ste 109 Gilbert, AZ 85233
Phone: 480-633-2929 | Fax: 480-633-1791
www.sdhqoffroad.com

Follow us on:



Facebook



Instagram

For questions or help with the installation, please call SDHQ Offroad @ 480-633-2929
Mon.–Fri. 8:00am–5:30pm and Sat. 8:00am–3:30pm Arizona Time. www.sdhqoffroad.com