



**SDHQ Motorsports**  
190 S McQueen Rd  
Ste 109 Gilbert, AZ 85233  
[www.SDHQoffroad.com](http://www.SDHQoffroad.com)

---

## Product Packing List

**Product:** SDHQ-33-3003-G5

**Description:** 2019-current RAM 1500 and 2021-current RAM TRX Billet Battery Terminal and Distribution Kit

_____ (1) SDHQ Billet Battery Distribution Kit	SDHQ-02-3003-D2
_____ (1) Billet Negative Sensor Terminal Kit	SDHQ-02-3003-TS1
_____ (1) 32" 2 AWG Negative Wire	SDHQ-02-3302-B32-13
_____ (1) Hardware Package	SDHQ-33-3003-G5-HP
_____ (1) Distribution Block Mounting Plate	
_____ (1) 5/16" - 18 S.S. Allen Nut	
_____ (1) M6 - 1.0 S.S. Flange Nut	

Inspected and Packaged By: \_\_\_\_\_ Date: \_\_\_\_\_

Included in **SDHQ-02-3003-D2**

_____	(1) Billet Positive Battery Terminal	SDHQ-02-3003-T2-P-Rev2
_____	(1) Billet Negative Distribution Block	SDHQ-02-3003-D2-N
_____	(1) Hardware Package	SDHQ-02-3003-D2-A
_____	(1) Positive Battery Protective Boot	
_____	(1) Red Post Washer	
_____	(1) M8 - 1.25 x 30mm S.S. Socket Head Bolt	
_____	(1) 5/16" - 18 x 1 1/2" Battery Terminal Bolt	
_____	(1) 5/16" - 18 Battery Shoulder Nut	
_____	(5) 1/4" - 20 x 1/2" S.S. Hex Head Bolt	
_____	(5) 1/4" S.S. Washer	
_____	(1) 5/16" - 18 x 1" S.S. Hex Head Bolt	
_____	(1) 5/16" - 18 x 3/4" S.S. Hex Head Bolt	
_____	(2) 5/16" S.S. Washer	
_____	(2) 3/8" - 16 x 2" S.S. Hex Head Bolt	
_____	(4) 3/8" S.S. Washers	
_____	(2) 3/8" - 16 S.S. Nuts	
_____	(1) Small Tube of Anti-Seize	

Included in **SDHQ-02-3003-TS1**

_____	(1) Billet Negative Sensor Terminal	SDHQ-02-3003-TS1-N
_____	(1) Hardware Package	SDHQ-02-3003-TS1-HP
_____	(1) Black Post Washer	
_____	(1) 5/16" - 18 x 1 1/2" Battery Terminal Bolt	
_____	(1) 5/16" - 18 Battery Shoulder Nut	
_____	(1) M6 SS Serrated Flange Head Nut	

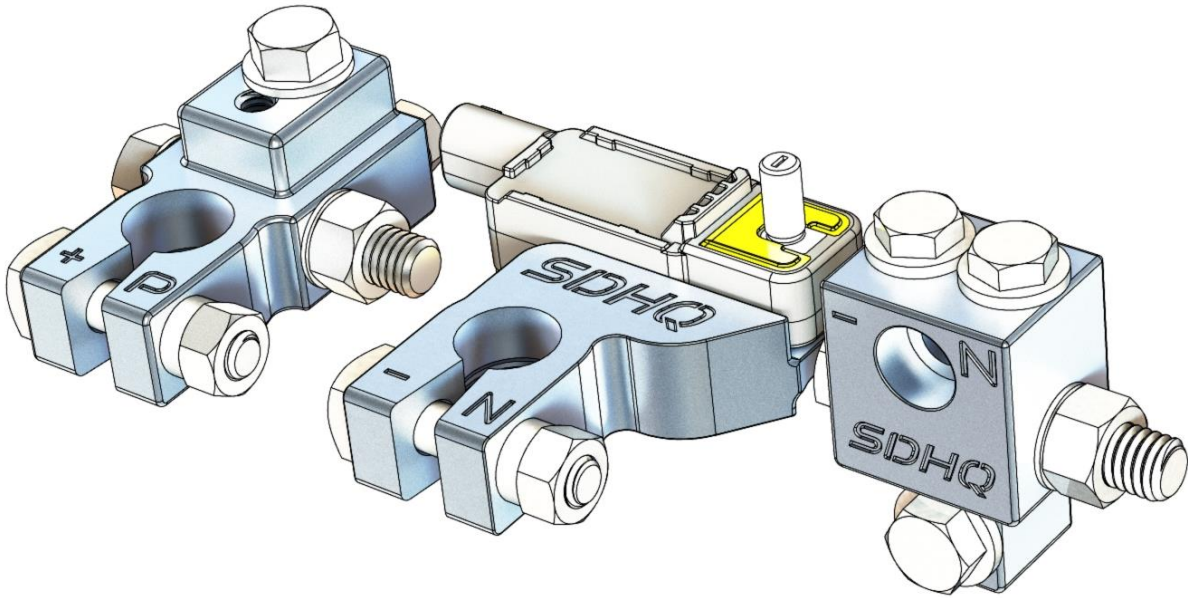


SDHQ Motorsports  
 190 S McQueen Rd  
 Ste 109 Gilbert, AZ 85233  
[www.SDHQoffroad.com](http://www.SDHQoffroad.com)

## INSTALLATION INSTRUCTIONS

**Product:** SDHQ-33-3003-G5

**Description:** 2019-current RAM 1500 and 2021-current RAM TRX Billet Battery Terminal and Distribution Kit



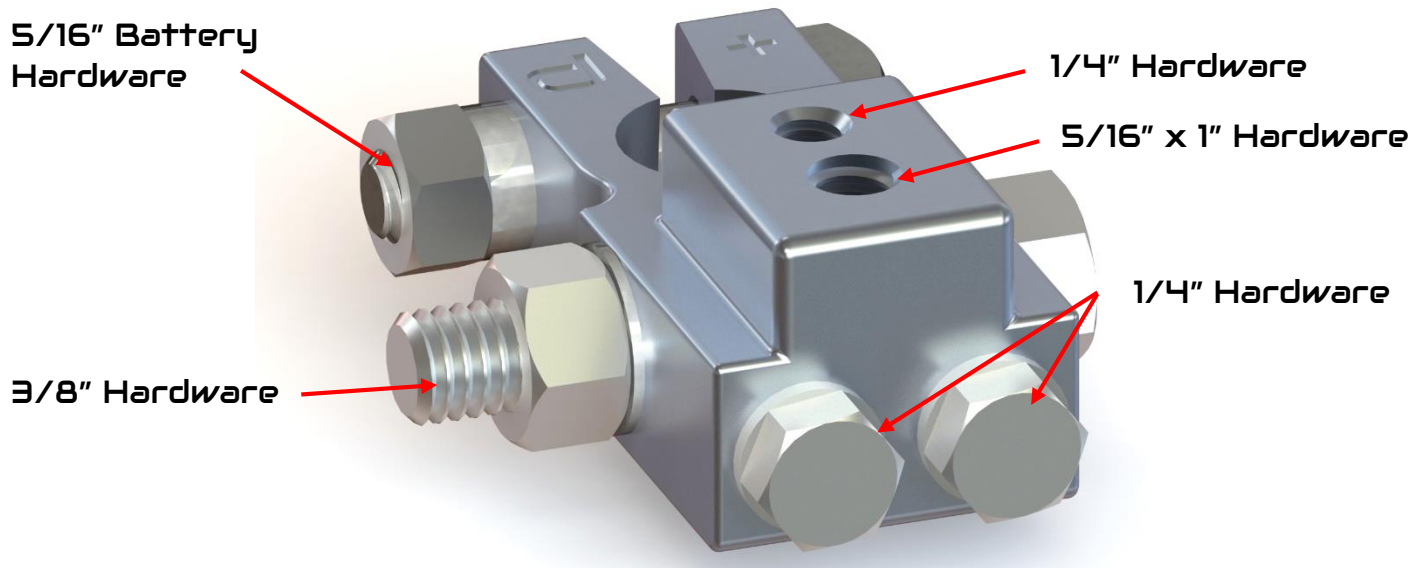
<b><u>Parts List</u></b>	<b><u>Hardware List</u></b>	<b><u>Required Tools</u></b>
(1) SDHQ Billet Battery Distribution Kit SDHQ-02-3003-D2 (1) SDHQ Negative Sensor Terminal Kit SDHQ-02-3003-TS1 (1) SDHQ 32" 2 AWG Negative Wire SDHQ-02-3302-B32-13 (1) Hardware Package SDHQ-33-3003-G5-HP	(1) Distribution Block Mounting Plate (1) 5/16" – 18 S.S. Allen Nut (1) M6 – 1.0 S.S. Flange Nut	7/16", 1/2", 9/16" Sockets/wrenches 10mm, 12mm Sockets/wrenches Ratchet 9/16" Wrench 5/16" Hex Key Rubber Mallet Pliers

### **Tech Notes**

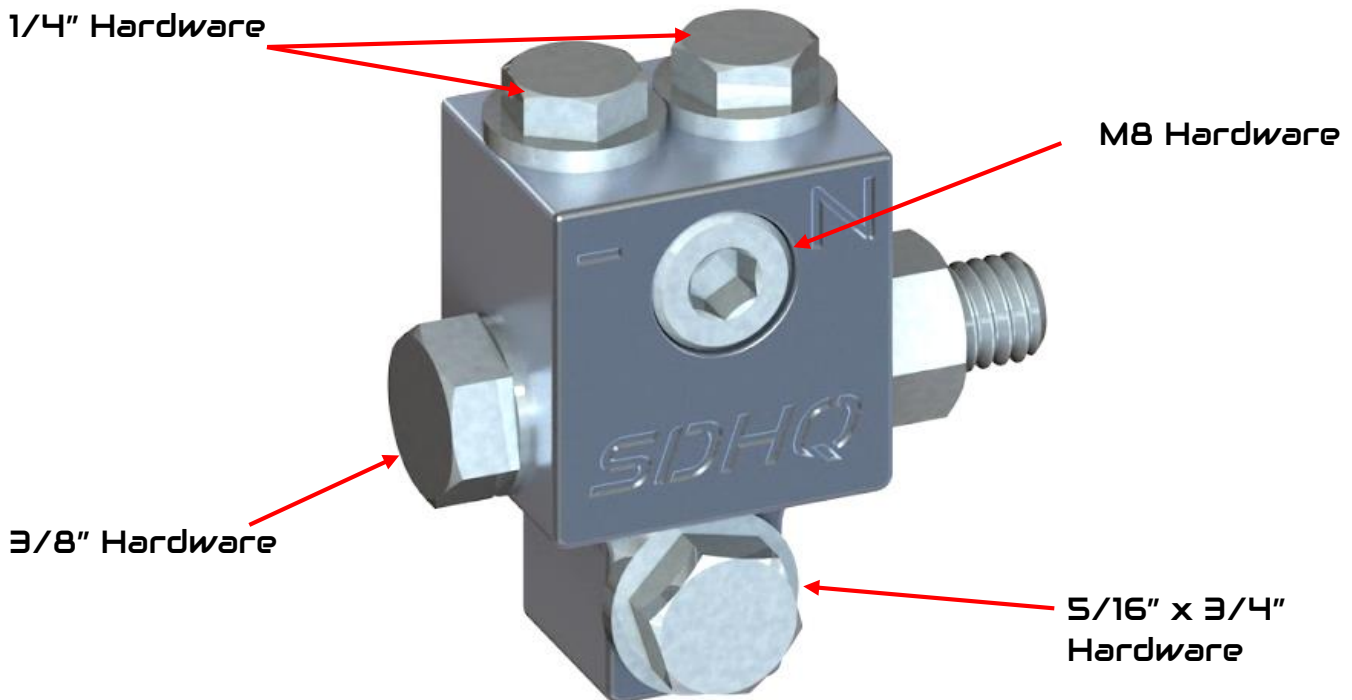
Apply Anti-Seize to all hardware.  
 Follow the Torque Specifications on the bottom of Page 5.  
 Fits 2019-current RAM 1500 and 2021-current RAM 1500 TRX.  
 See **SDHQ-02-37(01/04/10)** for (1-2GA, 4-6GA, 1/0GA) Solder Lug Kits.  
 See **SDHQ-02-38(02/04/06/10)** for (1-2GA, 4GA, 6GA, 1/0GA) Compression Lug Kits.  
**Approx. Install Time: 1 Hour**

For questions or help with the installation, please email [help@sdhqoffroad.com](mailto:help@sdhqoffroad.com)  
 Store front hours: Mon. – Fri. 8:00am – 5:30pm and Sat. 9:00am – 2:00pm Arizona Time.

## SDHQ Positive Battery Terminal

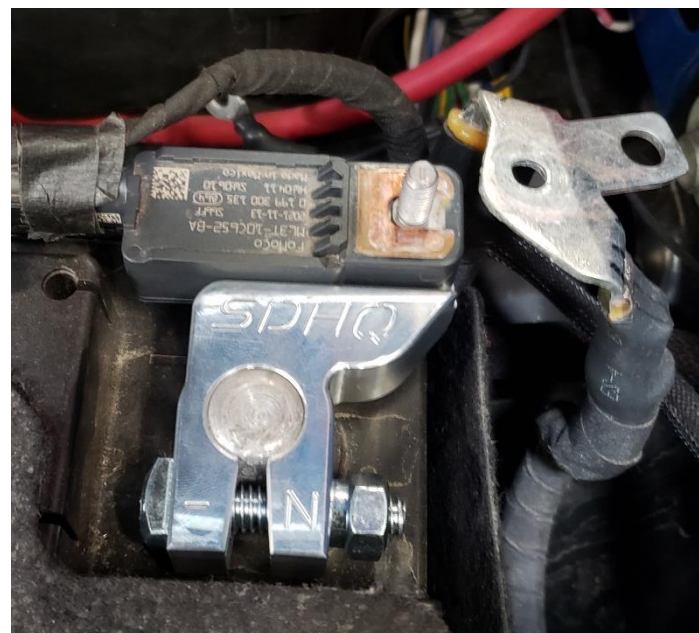


## SDHQ Negative Distribution Block



## Installation Instructions:

1. Unbox your SDHQ Built Complete Billet Battery Terminal Kit and check over all parts. Familiarize yourself with the parts and diagrams above.
2. **Disconnecting Battery.** Disconnect the stock negative battery terminal using 10mm and 12mm sockets. Removing all wires from the negative terminal and unplug the Bosch BMS (battery management sensor). Remove the terminal from the BMS using a 10mm socket and discard factory terminal. Disconnect the factory positive battery terminal using 10mm and 12mm sockets. Remove all wire terminals from the factory positive battery terminal and discard the factory terminal.
3. **TS1 Install.** Add the 5/16" battery bolt to the terminal and attach the TS1 Terminal to the BMS using the supplied stainless M6 flange head nut. Place the battery post washer on the negative terminal with the TS1 over it. Using a rubber mallet, tap the terminal to help it seat on the battery post. Tighten the 5/16" battery hardware once you're happy with terminal location. Leave grounds disconnected for now.



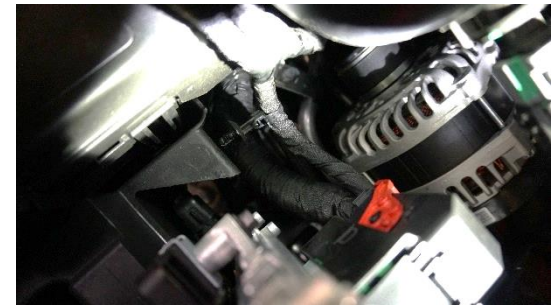
4. **Installing the Negative Distribution Block.** Remove the (2) 10mm nuts and ground wires located in front of the battery. Place the Distribution Block Mounting Plate and factory ground wires over the protruding studs and secure with factory 10mm nuts. Position the negative terminal block on the 5/16" stud on the Distribution Block Mounting Plate and secure with supplied 5/16" Allen Nut. Secure the larger 3/8" hole on the 32" 2GA Ground wire to the negative Distribution Block. Attach any other accessories to the Distribution Block and tighten all hardware.





## Positive Terminal Install

- 5. Installing Positive Battery Terminal.** Place the Red Post Washer and SDHQ Positive Battery Terminal on top of the positive battery post. Lightly tap on the top of the terminal using a rubber mallet to set it on the battery post. Tighten the 5/16" Battery Bolt and Nut using 1/2" wrenches on both to prevent damaging the battery post.
- 6.** Remove the clip retaining the positive terminal to the battery box. Remove the clip using a pair of flush cut pliers.
- 7.** Connect any other accessories to the terminals as needed. Tighten all hardware. Install the SDHQ Positive Terminal Boot. Then connect the factory wiring to the top 5/16" bolt.
- 8. Connecting Negative Terminal.** Remove the 12mm flange nut on the Negative Terminal Sensor, install the smaller 1/4" hole on the 32" 2GA Ground Wire with factory ground cable and secure with supplied M6 Flange Nut.



## Torque Specifications

- 1.** Torque the 1/4" bolts to 4 ft-lb. Torque the 5/16" hardware to 8 ft-lb. Torque the 3/8" hardware to 18 ft-lb. M8 – 1.25 x 30mm Socket Head Bolt will not be used.

**\*\*\*Double check all hardware is installed correctly and tight\*\*\***

**\*\*\*Re-torque ALL bolts after 100 miles\*\*\***



190 S McQueen Rd  
Ste 109 Gilbert, AZ 85233  
[www.sdhqoffroad.com](http://www.sdhqoffroad.com)

Follow us on:



Facebook



Instagram

For questions or help with the installation, please email [help@sdhqoffroad.com](mailto:help@sdhqoffroad.com)  
Store front hours: Mon. – Fri. 8:00am – 5:30pm and Sat. 9:00am – 2:00pm Arizona Time.