



SDHQ Motorsports
190 S McQueen Rd
Ste 109 Gilbert, AZ 85233
Phone: 480-633-2929

Product Packing List

Product: *SDHQ-33-1206-G5-TRX*

Description: ***2021+ RAM 1500 TRX A Pillar Light
Mounts***

_____ (1) Driver Side Mount

_____ (1) Passenger Side Mount

SDHQ-33-1206-G5-TRX-A

SDHQ-33-1206-G5-TRX-B

Inspected and Packaged By: _____ **Date:** _____

For questions or help with the installation, please call SDHQ Offroad @ 480-633-2929
Mon.-Fri. 8:00am-5:30pm and Sat. 8:00am-3:30pm Arizona Time. www.sdhqoffroad.com

**For questions or help with the installation, please call SDHQ Offroad @ 480-633-2929
Mon.–Fri. 8:00am–5:30pm and Sat. 8:00am–3:30pm Arizona Time. www.sdhqoffroad.com**



SDHQ Motorsports
190 S McQueen Rd
Ste 109 Gilbert, AZ 85233
Phone: 480-633-2929

INSTALLATION INSTRUCTIONS

Product: SDHQ-33-1206-G5-TRX

Description: 2021+ Ram 1500 TRX A-Pillar Light Mounts



Parts List	Hardware List	Required Tools
(1) Driver Side Mount SDHQ-33-1206-TRX-A (1) Passenger Side Mount SDHQ-33-1206-TRX-B	N/A	13mm Socket Ratchet Hood Prop

Tech Notes

No drilling or cutting required.

Use a hood prop and mark the outline of hood hinges to assist in realignment during install.

NOTE: Windshield wipers CANNOT be operated with Hood open.

Approx. Install Time: 1 Hour (not including wiring)

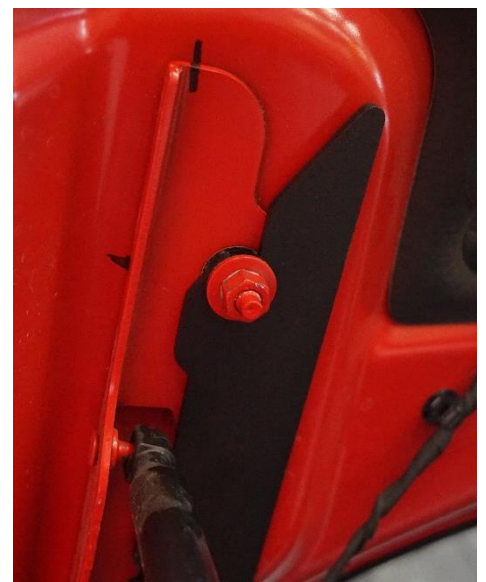
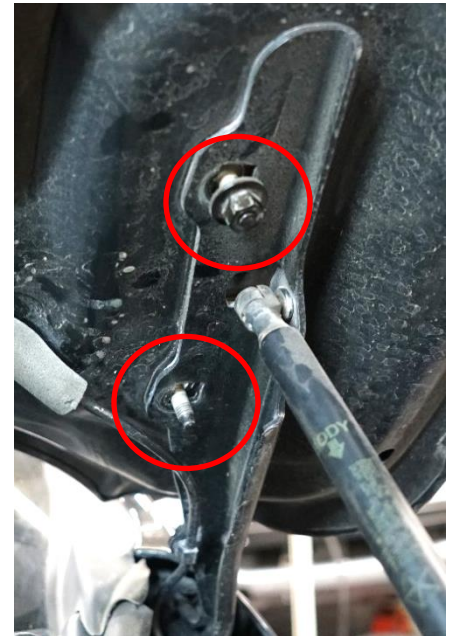
READ ALL INSTRUCTIONS THOROUGHLY FROM START TO FINISH BEFORE BEGINNING INSTALLATION!

For questions or help with the installation, please call SDHQ Offroad @ 480-633-2929
Mon.-Fri. 8:00am-5:30pm and Sat. 8:00am-3:30pm Arizona Time. www.sdhqoffroad.com



Installation Instructions:

1. While not necessary, it is recommended that masking tape is applied to the edge of the hood, windshield, and fender where you will be working to prevent accidental paint damage.
2. Open the hood and support it with a hood prop. Mark the hood and hood hinge in such a way that will assist in aligning the hood later. Then, starting on the driver's side with the 13mm socket and ratchet, remove the rear nut that attaches the hood to the hinge. Next, loosen the front nut while supporting the hood to prevent it from sliding down the hinge.
3. Locate the driver side A-Pillar light mount and slide it under the hood from the windshield. The A-Pillar will go between the windshield fluid line and the hood. Slide the front slot in between the hood hinge and factory nut. Align the rear slot to the rear bolt. Tighten enough to support the mount.
4. Align the mount all the way forward and towards the outside of the vehicle. Use the outline of the paint on the hood and your marks to align it back into factory position. Tighten both nuts once the hood is aligned.
5. Repeat Steps 2-4 for the passenger side A-Pillar light mount.
6. Install lights in the top slot. Position the lights as desired and wire. Enjoy your new SDHQ A-Pillar Light Mounts!



*****Double check all hardware is installed correctly and tight*****

*****Re-torque ALL bolts after 100 miles*****



190 S McQueen Rd
Ste 109 Gilbert, AZ 85233
Phone: 480-633-2929 | Fax: 480-633-1791
www.sdhqoffroad.com

Follow us on:



Facebook



Instagram

For questions or help with the installation, please call SDHQ Offroad @ 480-633-2929
Mon.–Fri. 8:00am–5:30pm and Sat. 8:00am–3:30pm Arizona Time. www.sdhqoffroad.com