



SDHQ Motorsports
190 S McQueen Rd
Ste 109 Gilbert, AZ 85233
Phone: 480-633-2929

Product Packing List

Product: SDHQ-33-1140-G5

Description: 2019+ RAM 1500 Switch Pros Power Module Mount

_____ (1) SDHQ Power Module Mounting Plate

SDHQ-33-1140-G5

Inspected and Packaged By: _____ Date: _____

For questions or help with the installation, please call SDHQ Offroad @ 480-633-2929
Mon.-Fri. 8:00am-5:30pm and Sat. 8:00am-3:30pm Arizona Time. www.sdhqoffroad.com



SDHQ Motorsports
190 S McQueen Rd
Ste 109 Gilbert, AZ 85233
Phone: 480-633-2929

INSTALLATION INSTRUCTIONS

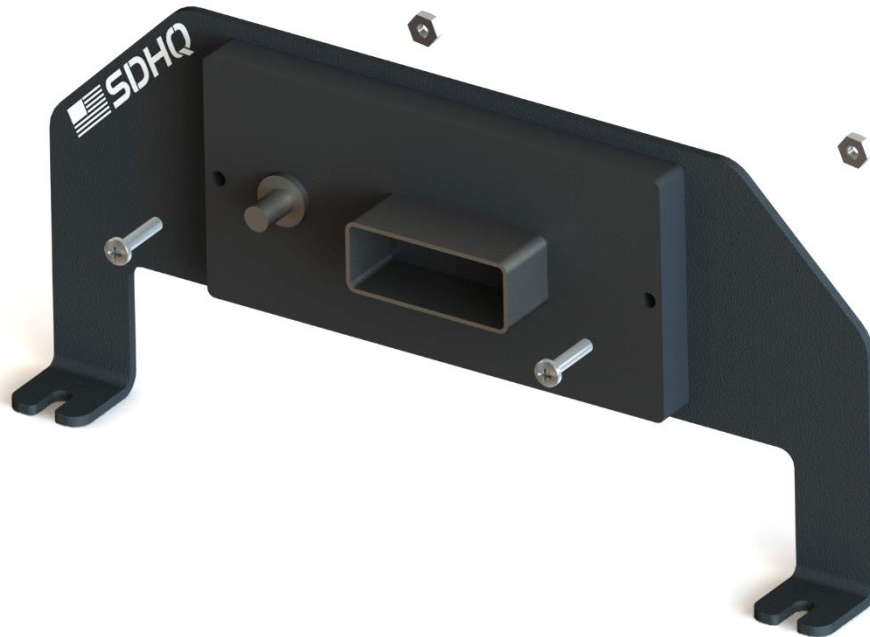
Product: *SDHQ-33-1140-G5*

Description: 2019+ RAM 1500 Switch Pros Power Module Mount



Parts List	Hardware List	Required Tools
(1) SDHQ Power Module Mounting Plate SDHQ-33-1140-G5	N/A	10mm Socket 9/32" Socket Ratchet Philips Screwdriver
Tech Notes		
Utilizes Switch Pros hardware to secure the Power Module to the Mount. Approx. Install Time: 30 Minutes (Not including wiring)		

For questions or help with the installation, please call SDHQ Offroad @ 480-633-2929
Mon.-Fri. 8:00am-5:30pm and Sat. 8:00am-3:30pm Arizona Time. www.sdhqoffroad.com



*****READ ALL INSTRUCTIONS THOROUGHLY FROM START TO FINISH BEFORE BEGINNING INSTALLATION! *****

Installation Instructions:

1. Unbox your parts and familiarize yourself with them.
2. **Assemble the Power Module and Mount.** Align the Switch Pros Power Module to the SDHQ Power Module Mount as shown above. Use the Switch Pros supplied hardware to secure the Power Module to the Mount. Install the ground wire to the Power Module.
3. **Preparing your Dodge.** Start by opening the hood. Locate the (2) bolts circled below on the driver side of the truck by the battery. Remove both of these bolts using the 10mm socket and ratchet.



For questions or help with the installation, please call SDHQ Offroad @ 480-633-2929
Mon.–Fri. 8:00am–5:30pm and Sat. 8:00am–3:30pm Arizona Time. www.sdhqoffroad.com

4. With those bolts removed, the Power Module and Mount can be aligned over those holes. Install the (2) factory bolts. Once the placement of the Power Module and Mount is in a desirable position, tighten the (2) bolts.



5. Proceed with the wiring of the Power Module.

Wiring:

Once the Switch-Pros power module is mounted, but BEFORE it is connected to anything else, do the following:

1. Reinstall battery (if battery was removed during installation), and secure factory connections. Start vehicle and confirm that battery is properly installed, connected and grounded.
2. Connect the Switch-Pros Ground wire lug to the negative terminal on the battery (grounding elsewhere will not properly filter noise and will void your product warranty).
3. Plug the 16-pin harness into the power module; be sure it locks in.
4. Connect the red Battery Cable to the positive terminal on the battery. Tighten down both ends, to prevent lug from rotating and possibly causing friction or spark.
5. **Enjoy your SDHQ mounted Switch Pros Power Module!**

*****Double check all hardware is installed correctly and tight*****

*****Re-torque ALL bolts after 100 miles*****



190 S McQueen Rd
Ste 109 Gilbert, AZ 85233
Phone: 480-633-2929 | Fax: 480-633-1791
www.sdhqoffroad.com

Follow us on:



Facebook



Instagram

For questions or help with the installation, please call SDHQ Offroad @ 480-633-2929
Mon.–Fri. 8:00am–5:30pm and Sat. 8:00am–3:30pm Arizona Time. www.sdhqoffroad.com