



SDHQ Motorsports
190 S McQueen Rd
Ste 109 Gilbert, AZ 85233

Product Packing List

Product: *SDHQ-33-1130-TRX*

Description: 2021+ Ram 1500 TRX Switch Pros SP-9100
Keypad Mount

_____ (1) SDHQ Billet SP9100 Keypad Mount

SDHQ-33-1130-TRX

_____ (1) Hardware Package

SDHQ-53-1130-XK70-HP

_____ (4) #6 - 32 x 2" S.S. Threaded Rods

_____ (4) #6 S.S. Washers

Inspected and Packaged By: _____ Date: _____

For questions or help with the installation, please email help@sdhqoffroad.com
Store front hours: Mon. – Fri. 8:00am – 5:30pm and Sat. 9:00am – 2:00pm Arizona Time.



SDHQ Motorsports
190 S McQueen Rd
Ste 109 Gilbert, AZ 85233

INSTALLATION INSTRUCTIONS

Product: SDHQ-33-1130-TRX

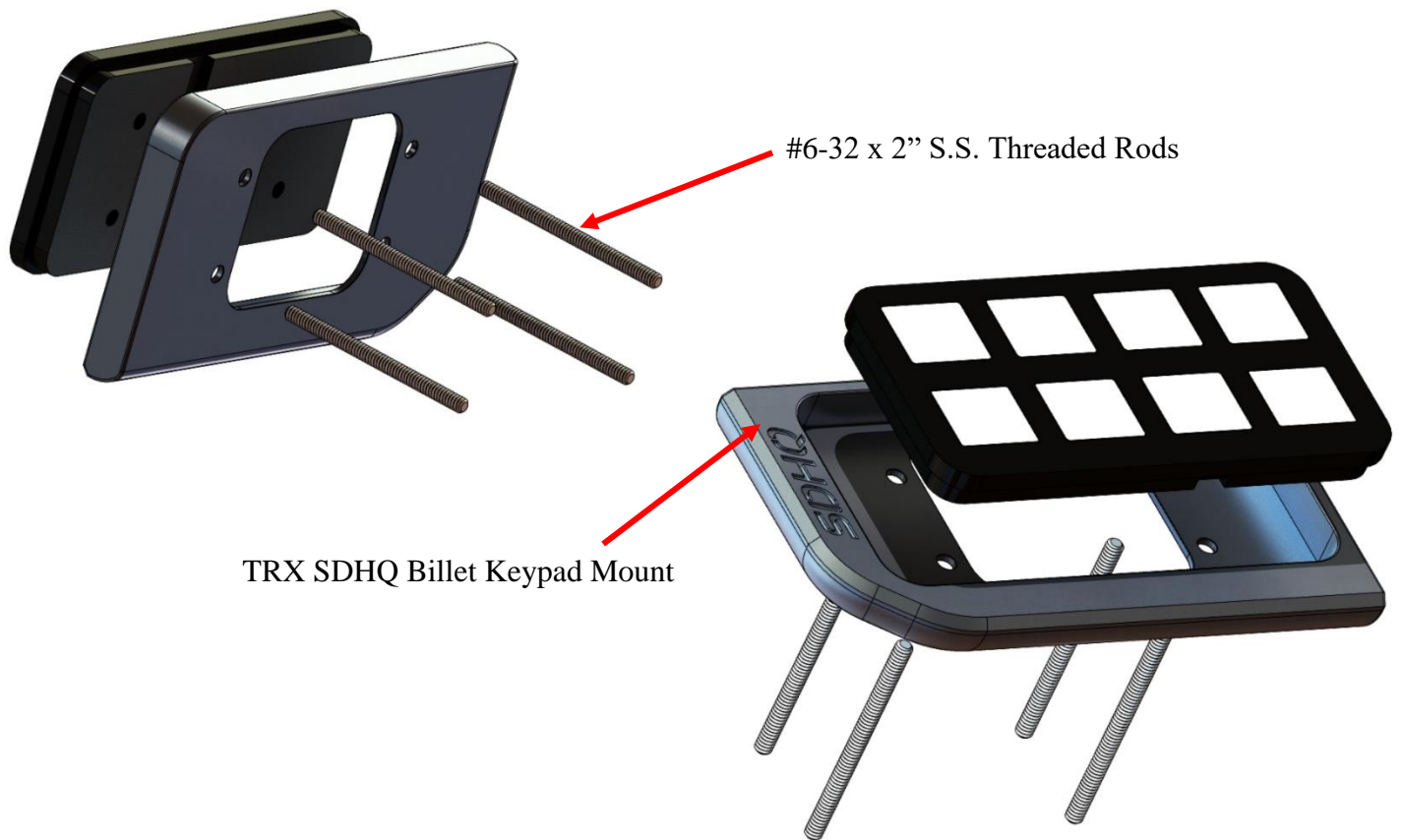
Description: 2021+ RAM 1500 TRX 9100 Keypad Mount



<u>Parts List</u>	<u>Hardware List</u>	<u>Required Tools</u>
(1) SDHQ Built Billet Keypad Mount for Ram 1500 TRX SDHQ-33-1130-TRX (1) Hardware Package SDHQ-33-1130-TRX-HP	(4) #6 – 32 x 2" S.S. Threaded Rods (4) #6 S.S. Washers	Plastic Panel Remover Drill 1/8" Drill Bit 5/32" Drill Bit 3/4" Step Drill Bit T15 & T20 Bits Mini Ratchet w/ Phillips head bit Ratchet 12" extension
<u>Tech Notes</u>		
Use Anti-seize on all Stainless Steel Hardware **Approx. Install Time: 1 Hour (not including wiring)**		

***READ ALL INSTRUCTIONS THOROUGHLY FROM START TO FINISH BEFORE BEGINNING INSTALLATION! ***

For questions or help with the installation, please email help@sdhqoffroad.com
Store front hours: Mon. – Fri. 8:00am – 5:30pm and Sat. 9:00am – 2:00pm Arizona Time.



Installation Instructions:

1. Unbox all parts and familiarize yourself with them.
2. Open the center console and remove the coin organizer. Remove the (2) T15 screws hidden by the coin organizer and set aside.

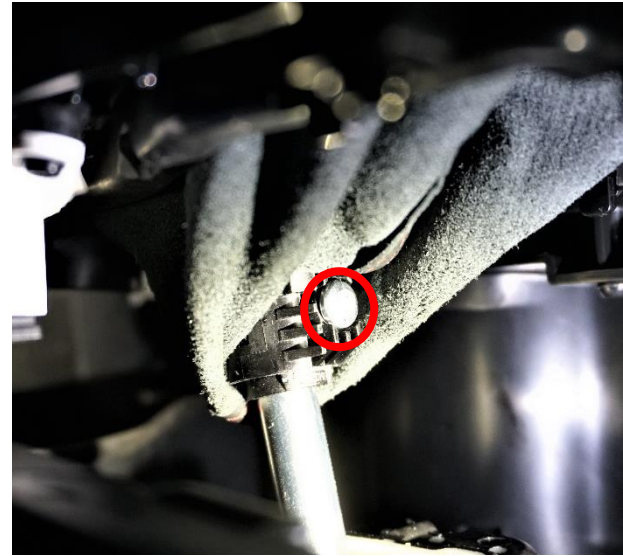


For questions or help with the installation, please email help@sdhqoffroad.com
Store front hours: Mon. – Fri. 8:00am – 5:30pm and Sat. 9:00am – 2:00pm Arizona Time.

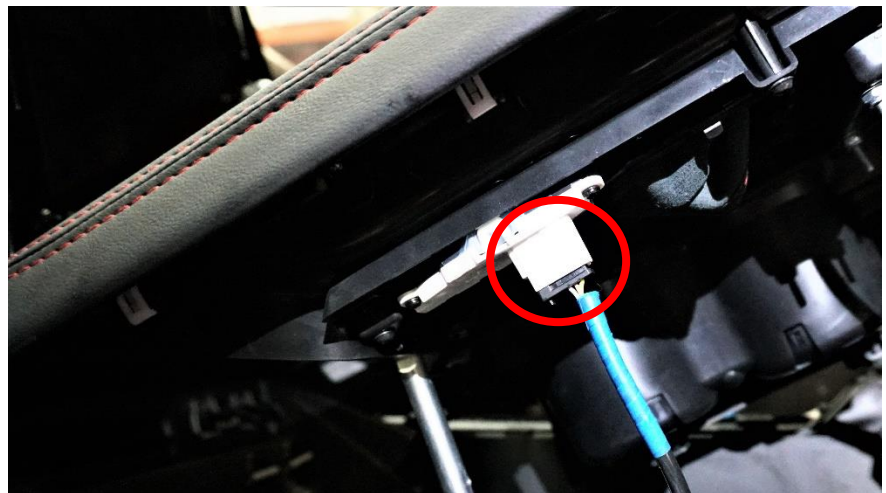
- Using your trim tool, remove the (2) panels around the front of the center console under the dash to expose a small phillips head trim screw on each side. Use your mini ratchet and phillips bit to remove the trim screw on both sides



- Use your trim tool to unclip the center console panel and lift until you can see the T20 retainer bolt that holds the shifter in place. Using your long extension, loosen and remove the retainer bolt from the shifter. **Note:** Do **NOT** drop the retainer bolt into the shifter assembly



- Unclip the electrical connector in the panel and remove from the vehicle.



For questions or help with the installation, please email help@sdhqoffroad.com
Store front hours: Mon. – Fri. 8:00am – 5:30pm and Sat. 9:00am – 2:00pm Arizona Time.

- Position and secure with tape, your bare keypad mount on the center console piece as pictured. Drill a 1/8" pilot hole into the panel using each of your mounts bolt holes as a guide and another pilot hole in the center opening of the bare mount towards the front of the panel. Remove the keypad mount, turn panel over and re-drill the (4) bolt holes with your 5/32" drill bit and use your step drill bit to drill your center hole to 3/4" for the wire harness.



- Take your keypad and thread in the (4) 2" studs, use thread locker on the studs, and place the keypad into the Billet Keypad Mount.
- Place your keypad mount assembly back into the center console and use your Switch Pros supplied nylock nuts with the #6 S.S. washers and tighten everything down.



For questions or help with the installation, please email help@sdhqoffroad.com
Store front hours: Mon. – Fri. 8:00am – 5:30pm and Sat. 9:00am – 2:00pm Arizona Time.

9. Wire and reinstall your panel with attached keypad and enjoy your SDHQ Built Billet Switch Pros Keypad Mount!



*****Double check all hardware is installed correctly and tight*****

*****Re-torque ALL bolts after 100 miles*****



190 S McQueen Rd
Ste 109 Gilbert, AZ 85233

www.sdhqoffroad.com

Follow us on:



Facebook



Instagram

For questions or help with the installation, please email help@sdhqoffroad.com
Store front hours: Mon. – Fri. 8:00am – 5:30pm and Sat. 9:00am – 2:00pm Arizona Time.