



SDHQ Motorsports
190 S McQueen Rd
Ste 109 Gilbert, AZ 85233
Phone: 480-633-2929

Product Packing List

Product: SDHQ-33-1102-TRX

Description: 2021+ Ram 1500 TRX Hidden Bedside Supports

- _____ (2) Driver/Passenger Bed Uprights (SDHQ-33-1102-TRX-AD/AP)
- _____ (2) Driver/Passenger Fender Uprights (SDHQ-33-1102-TRX-BD/BP)
- _____ (2) Driver/Passenger Fender Pivots (SDHQ-33-1102-TRX-CD/CP)
- _____ (2) Driver/Passenger Frame Mounts (SDHQ-33-1102-TRX-DD/DP)
- _____ (2) Upper Spacers (SDHQ-33-1102-TRX-E)
- _____ (2) Billet Connecting Rods (SDHQ-53-1102-G3-E)
- _____ (1) Hardware Package (SDHQ-33-1102-TRX-F)
 - _____ (4) 1/2" - 13 x 1-3/4" Grade 8 Bolts
 - _____ (2) 1/2" - 13 x 2-3/4" Grade 8 Bolts
 - _____ (2) 1/2"-13 x 2" Grade 8 Carriage Bolts
 - _____ (10) 1/2" Grade 8 Washers
 - _____ (2) 1/2"-13 Grade 8 Lock Nuts
 - _____ (2) 7/16" - 14 x 1-1/4" Grade 8 Bolts
 - _____ (2) 7/16" Grade 8 Washers
 - _____ (2) 3/8"-16 x 1-1/4" Grade 8 Bolts
 - _____ (4) 3/8" Grade 8 Washers
 - _____ (2) 3/8"-16 Distorted Thread Lock Nuts
 - _____ (4) 5/16"-18 x 1-1/2" Grade 8 Bolts
 - _____ (4) M6-1.0 x 10mm S.S. Button Head Bolts
 - _____ (4) M6 S.S. Washers
 - _____ (2) 1/2" Right Hand Jam Nuts
 - _____ (2) 1/2" Left Hand Jam Nuts
 - _____ (2) CML8 Left Hand Economy Heims
 - _____ (2) CVS, Right Hand Clevis
 - _____ (2) SDHQ Trimmed Upper Bracket (SDHQ-50-1540-P2)
 - _____ (1) SDHQ Bedrack Tie Down Kit (SDHQ-00-1810-U1)
 - _____ (1) KnKut 11/32" Drill Bit

Inspected and Packaged By: _____ Date: _____

**For questions or help with the installation, please call SDHQ Offroad @ 480-633-2929
Mon.–Fri. 8:00am–5:30pm and Sat. 8:00am–3:30pm Arizona Time. www.sdhqoffroad.com**



SDHQ Motorsports
 190 S McQueen Rd
 Ste 109 Gilbert, AZ 85233
 Phone: 480-633-2929

INSTALLATION INSTRUCTIONS

Product: *SDHQ-33-1102-TRX*

Description: 2021+ Ram 1500 TRX Hidden Bedside Supports

<u>Parts List</u>	<u>Hardware List</u>	<u>Required Tools</u>
(2) Driver/Passenger Bed Uprights (SDHQ-33-1102-TRX-AD/AP) (2) Driver/Passenger Fender Uprights (SDHQ-33-1102-TRX-BD/BP) (2) Driver/Passenger Fender Pivots (SDHQ-33-1102-TRX-CD/CP) (2) Driver/Passenger Frame Mounts (SDHQ-33-1102-TRX-DD/DP) (2) Upper Spacers (SDHQ-33-1102-TRX-E) (2) Billet Connecting Rods (SDHQ-53-1102-G3-E)	(4) 1/2" - 13 x 1-3/4" Grade 8 Bolts (2) 1/2" - 13 x 2-3/4" Grade 8 Bolts (2) 1/2"-13 x 2" Grade 8 Carriage Bolts (10) 1/2" Grade 8 Washers (2) 1/2"-13 Grade 8 Lock Nuts (2) 7/16" - 14 x 1-1/4" Grade 8 Bolts (2) 7/16" Grade 8 Washers (2) 3/8"-16 x 1-1/4" Grade 8 Bolts (4) 3/8" Grade 8 Washers (2) 3/8"-16 Distorted Thread Lock Nuts (4) 5/16"-18 x 1-1/2" Grade 8 Bolts (4) M6-1.0 x 10mm S.S. Button Head Bolts (4) M6 S.S. Washers (2) 1/2" Right Hand Jam Nuts (2) 1/2" Left Hand Jam Nuts (2) CML8 Left Hand Economy Heims (2) CV5, Right Hand Clevis (2) SDHQ Trimmed Upper Bracket (SDHQ-50-1540-P2) (1) SDHQ Bedrack Tie Down Kit (SDHQ-00-1810-U1) (1) KnKut 11/32" Drill Bit	<ul style="list-style-type: none"> - T25 Torx bit - 4mm Allen Head Socket - 10mm socket / wrench - 1/2" socket / wrench - 9/16" socket / wrench - 5/8" socket / wrench - 3/4" socket / wrench - 21mm socket - Drill - Center punch - Panel Removal Tool - Black touch up paint

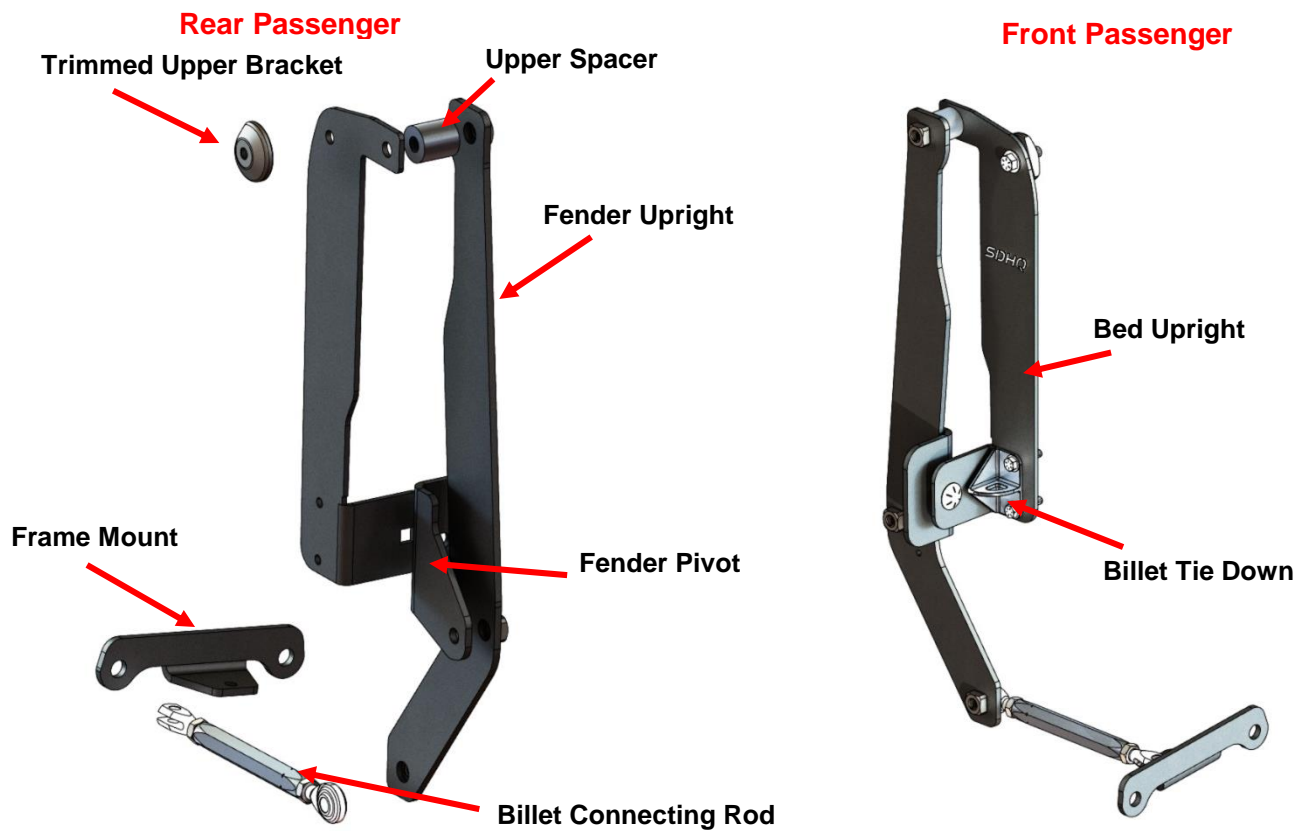


Tech Notes

Drilling is required for install, use included drill bit.
 Approx. Install Time: 3+ Hours

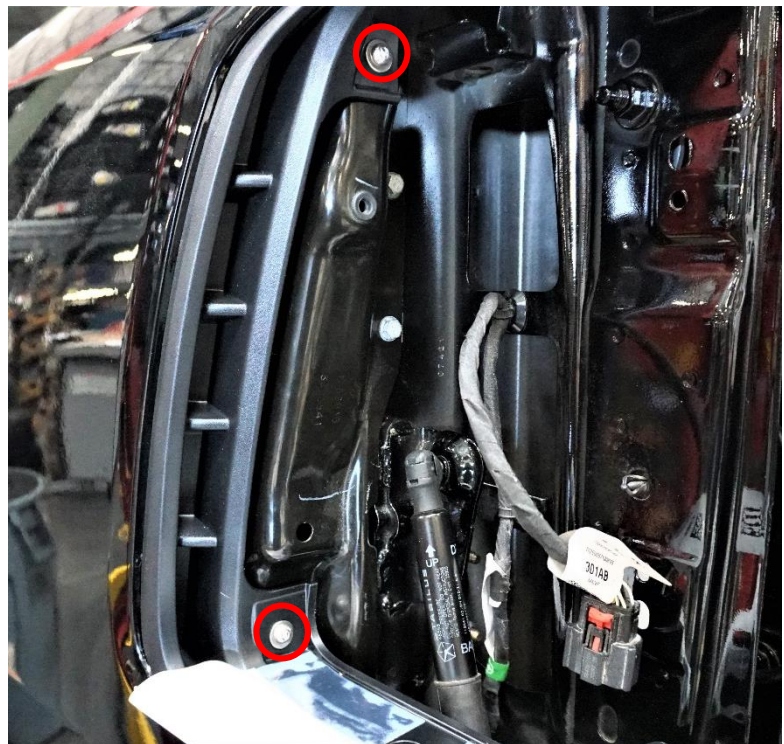
READ ALL INSTRUCTIONS THOROUGHLY FROM START TO FINISH BEFORE BEGINNING INSTALLATION!

For questions or help with the installation, please call SDHQ Offroad @ 480-633-2929
 Mon.–Fri. 8:00am–5:30pm and Sat. 8:00am–3:30pm Arizona Time. www.sdhqoffroad.com



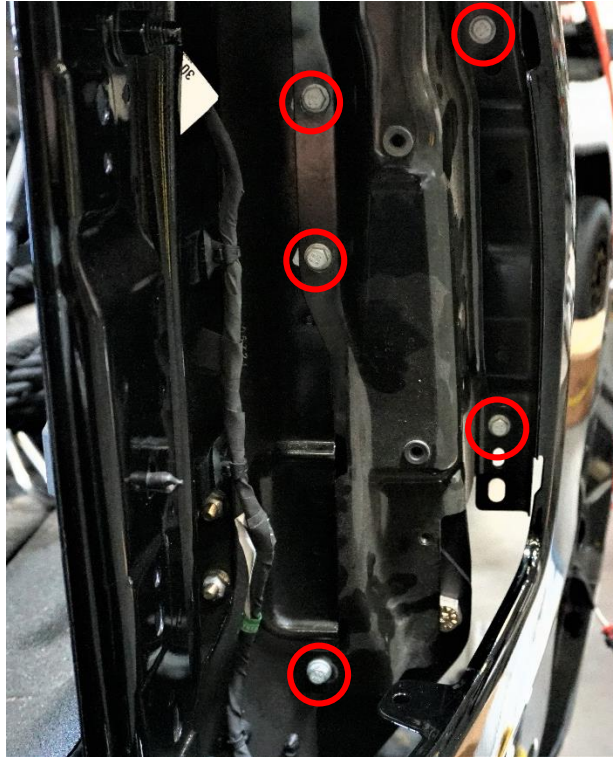
Installation Instructions:

1. Unbox and familiarize yourself with all of the parts.
2. Unhook one tailgate support cable at a time and remove the T25 torx bolts from the inside of the tailgate (replace the cable once the light is unbolted). Use your panel removal tool on the backside of the tail light and carefully pull it straight back. Unplug the light and set it aside.
3. Similarly, use your 10mm to unbolt the (2) bolts holding the tail light vent bezel. Use your panel removal tool to work around the whole piece to release all of the clips.

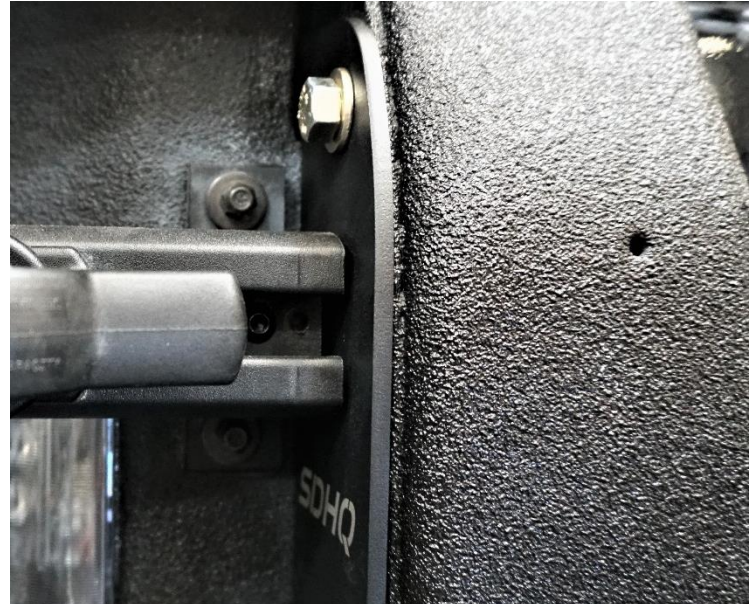


For questions or help with the installation, please call SDHQ Offroad @ 480-633-2929
Mon.–Fri. 8:00am–5:30pm and Sat. 8:00am–3:30pm Arizona Time. www.sdhqoffroad.com

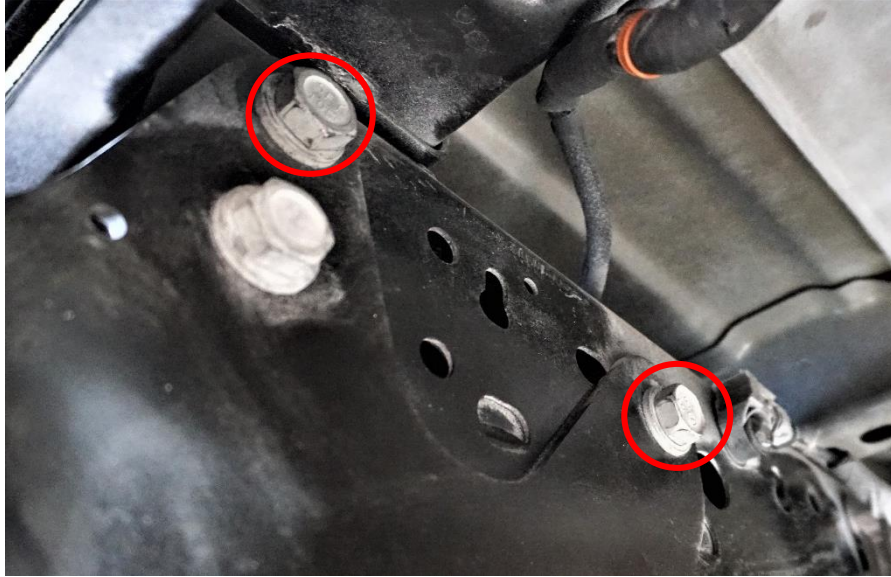
4. Remove the (5) 10mm bolts from the sheet metal that has been exposed after removing the tail light and tail light vent bezel. Set aside the sheet metal piece.



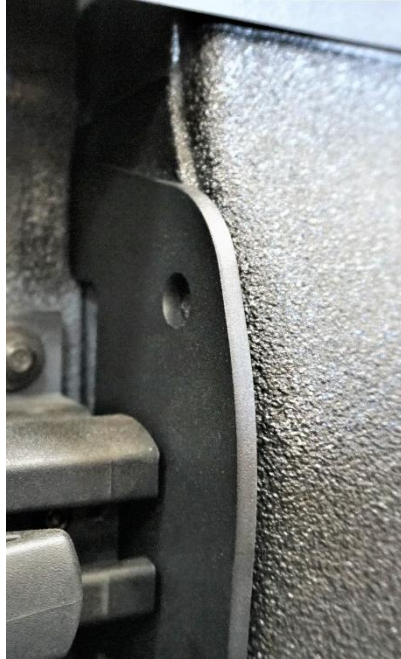
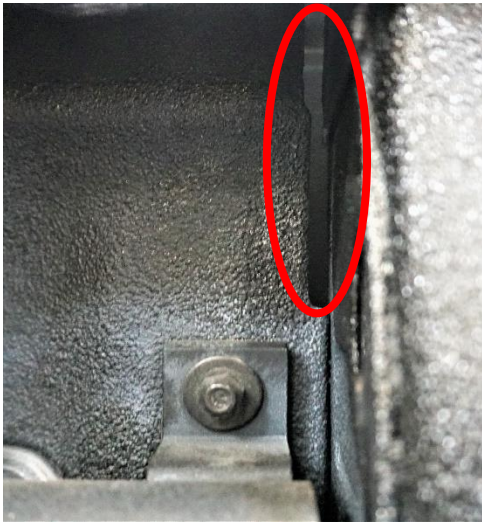
5. Some trucks come equipped with tie down rails, you will need to remove the (8) 10mm bolts per side holding the rail to the bed to remove the rail for install of the bedside supports. Use your 4mm allen head socket to unbolt the end cap on the tailgate side of the tie down rail, the cap will not fit with the installed bed side support.



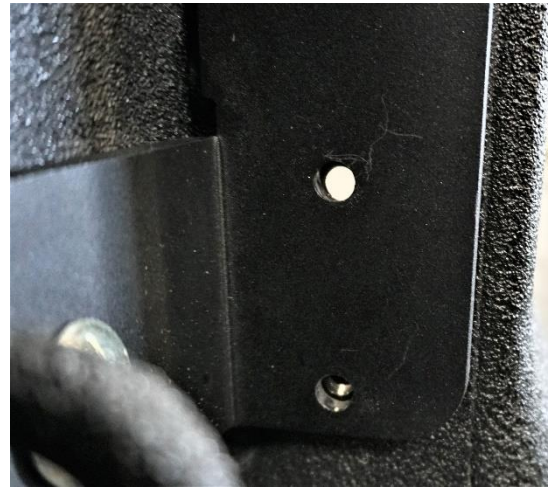
6. Use your 21mm socket to remove the upper (2) bolts that secure the trailer hitch to the frame. Note that the longer bolt goes toward the rear of the truck.



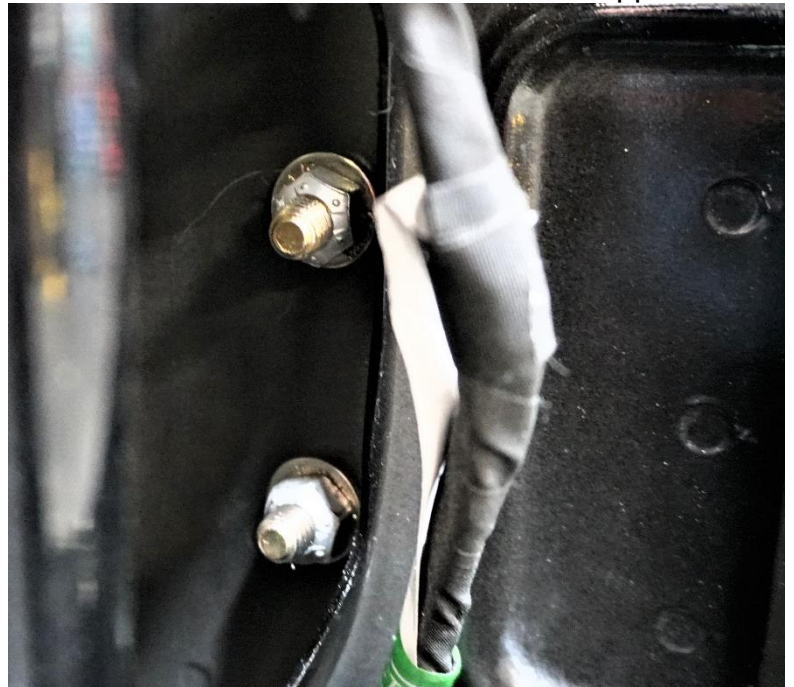
7. Start your install by sliding the Bedside Upright through the opening in the bed and installing a 7/16" bolt / washer into the top hole and bolting to the Trimmed Upper Bracket. The Trimmed Upper Bracket will sit in the opening visible from the top of the bed side, place the bracket in through the tail light opening as shown.



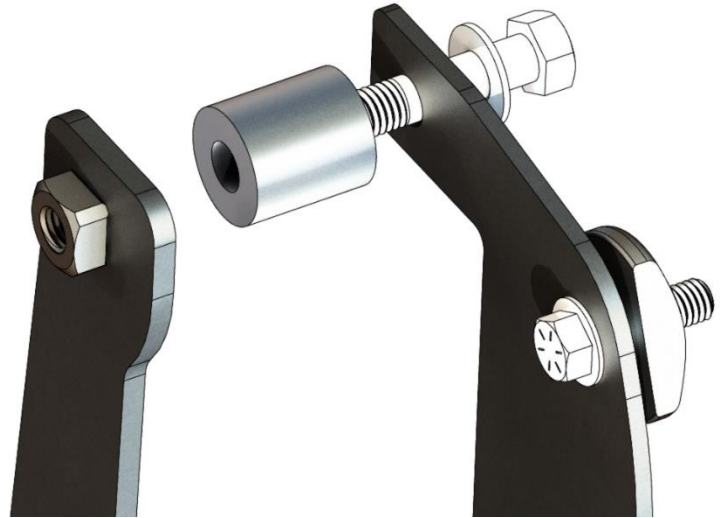
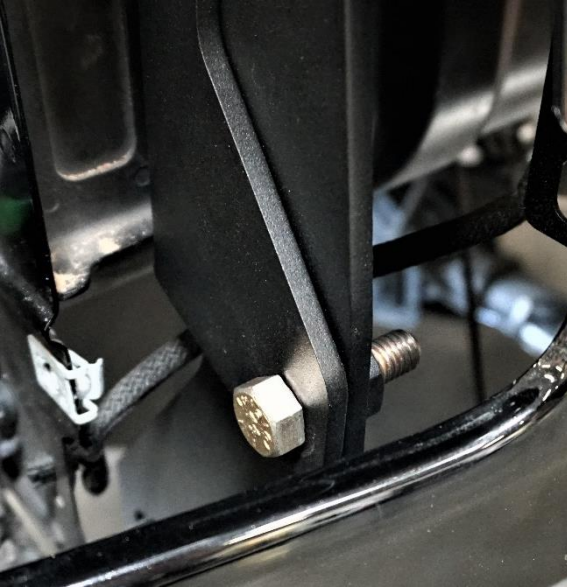
8. Now place the 1/2"-13 carriage bolt into the square opening in the Bedside Upright and place the Fender Pivot on the other side of the bolt, install the 1/2"-13 nut/washer and tighten the all the hardware installed up to this point. Using the supplied drill bit, drill through the bed using the (2) holes in the Bedside Upright as a template. (Note: you may have to remove/reinstall the Bedside Upright once the holes are drilled to debur them and paint the holes to prevent rust from forming)



9. Once both holes are drilled, assemble the SDHQ Billet Tie Down with the 5/16" x 1-1/2" hardware using the lock nuts on the inside of the fender as shown. The hardware supplied with the Tie Down kit is too short.



10. Now that the Bed Uprights are both installed and tightened, take your Fender Upright and feed it into the fender. The notch goes up and make sure the weld nuts are pointing towards the front of the truck, the piece sits in front of the Fender Pivot. Start bolting the Fender Upright by installing one of the $\frac{1}{2}$ "-13 x 1-3/4" into the center bolt hole **without** a washer, leave this bolt loose. Next, install the $\frac{1}{2}$ "-13 x 2-3/4" Bolt and washer with the Upper Spacer between the exposed bolt hole on the Bed Upright and the Fender Upright as shown, fully tighten this hardware.



11. Take your Frame Mount and connect it to the frame using the (2) frame bolts removed earlier, note that the Frame Mount is offset and the longer side points towards the back of the truck as shown. Tighten frame bolts to 110 ft/lbs (+/- 5ft/lbs).



12. Assemble the Billet Connecting Rod with the Heim and Left had jam nut on the end with notches in the Billet Hex; the standard jam nut and clevis thread into the other side. Thread the connecting rod so it is roughly 9-3/8" between hole centers and both the Heim and Clevis are threaded into the connecting rods evenly and leave the jam nuts loose. Now, using the 3/8" hardware, attach the clevis end to the Frame Mount and using a 1/2"-13 x 1-3/4" bolt with washer, bolt the heim end to the Fender Upright. The Billet Connecting Rod will likely need adjustment for all the bolts to fit correctly.



13. Repeat steps 1-12 for the other side.

14. Close your tailgate and using your 3/4" wrench, lengthen the Billet Connecting Rod until the desired amount panel gap is achieved. Occasionally check the opening and closing of the tailgate to make sure it is not contacting anywhere. Lock the position of the Fender Upright by tightening the center 1/2" bolt and jam nuts on the connecting rod. Shown below is an example of panel gap before and after installation.



15. Reinstall all stock parts, use the M6 x 10mm S.S. bolts and washers in place of 10mm bolts removed from the tail light vent bezel. (Note: The center 1/2" bolt may touch the sheet metal piece removed from step 4, if it is interfering with reinstallation, loosen the fender pivot and move it towards the front of the truck).

16. Enjoy your SDHQ Built Hidden Bedside Support for your Ram 1500 TRX!

*****Double check all hardware is installed correctly and tight*****

*****Re-torque ALL bolts after 100 miles*****



190 S McQueen Rd
Ste 109 Gilbert, AZ 85233
Phone: 480-633-2929 | Fax: 480-633-1791
www.sdhqoffroad.com

Follow us on:



Facebook



Instagram

For questions or help with the installation, please call SDHQ Offroad @ 480-633-2929
Mon.–Fri. 8:00am–5:30pm and Sat. 8:00am–3:30pm Arizona Time. www.sdhqoffroad.com