



SDHQ Motorsports
190 S McQueen Rd
Ste 109 Gilbert, AZ 85233
www.SDHQoffroad.com

Product Packing List

Product: SDHQ-31-1501-G5

Description: SDHQ 2019+ Dodge 2500/3500 Intercooler Skid Plate System

- | | |
|--|--------------------|
| _____ (1) Intercooler Skid Plate | SDHQ-31-1501-G5-D |
| _____ (1) Front Sub Frame | SDHQ-31-1501-G5-SF |
| _____ (1) Hardware Package | SDHQ-31-1501-G5-HW |
| _____ (8) M8 x 1.25 mm SS Flat Head Screw | |
| _____ (6) 5/16"-18 SS Flat Head Screw | |
| _____ (3) 1/4"-20 SS Flat Head Screw | |
| _____ (14) 5/16" x 1-3/8" Round Body Washers | |
| _____ (3) 1/4" x 1-3/8" Round Body Washers | |
| _____ (3) 1/4"-20 Heavy-Duty Rivet Nut | |
| _____ (4) 5/8"-11 Grade 8 Steel Bolt | |
| _____ (4) 5/8" Grade 8 Steel Washer | |
| _____ (1) Cut Template | |

Inspected and Packaged By: _____ Date: _____

For questions or help with the installation, please email help@sdhqoffroad.com
Store front hours: Mon. – Fri. 8:00am – 5:30pm and Sat. 9:00am – 2:00pm Arizona Time.

For questions or help with the installation, please email help@sdhqoffroad.com
Store front hours: Mon. – Fri. 8:00am – 5:30pm and Sat. 9:00am – 2:00pm Arizona Time.



SDHQ Motorsports
 190 S McQueen Rd
 Ste 109 Gilbert, AZ 85233
www.SDHQoffroad.com

INSTALLATION INSTRUCTIONS

Product: SDHQ-31-1501-G5

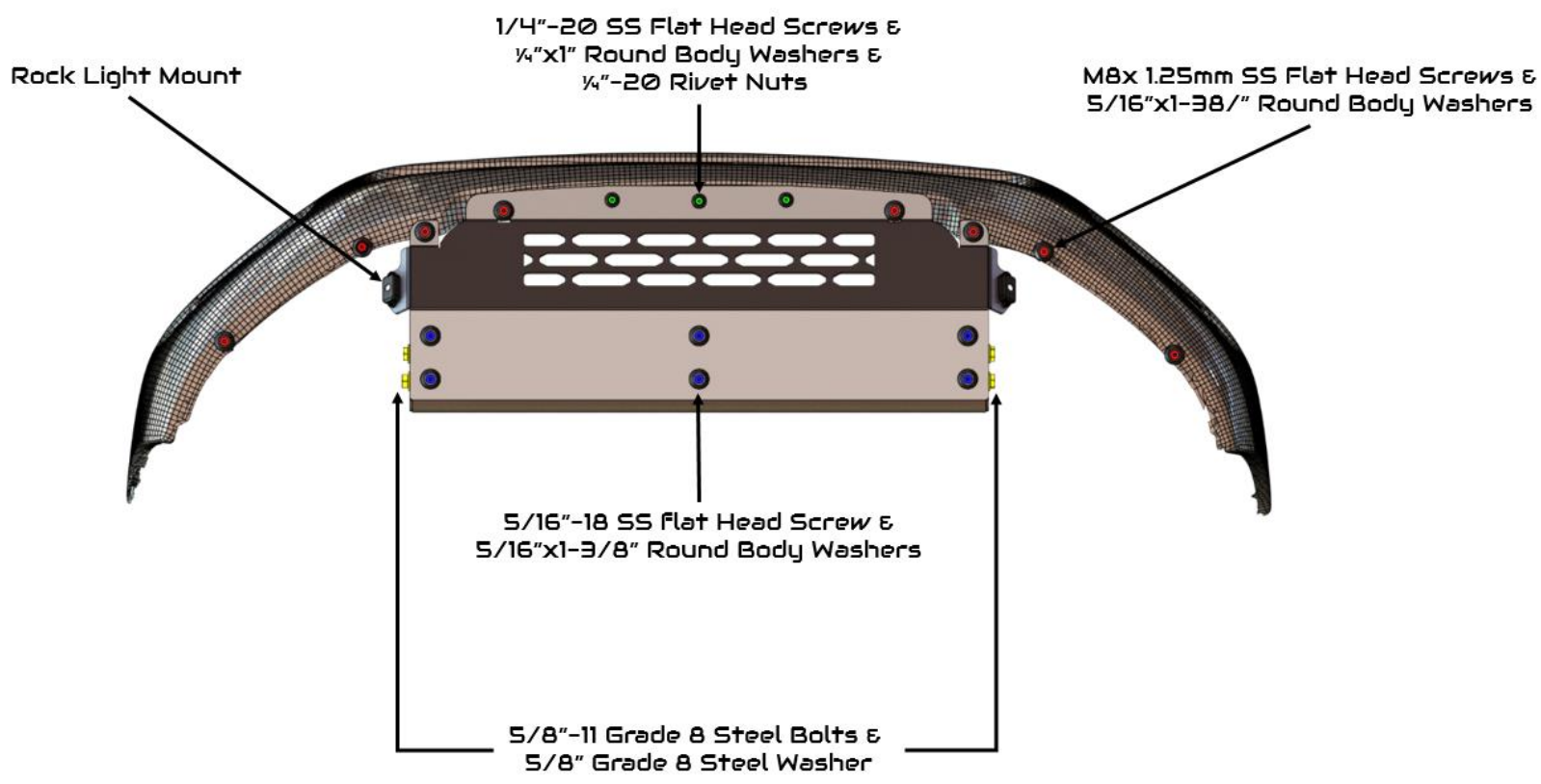
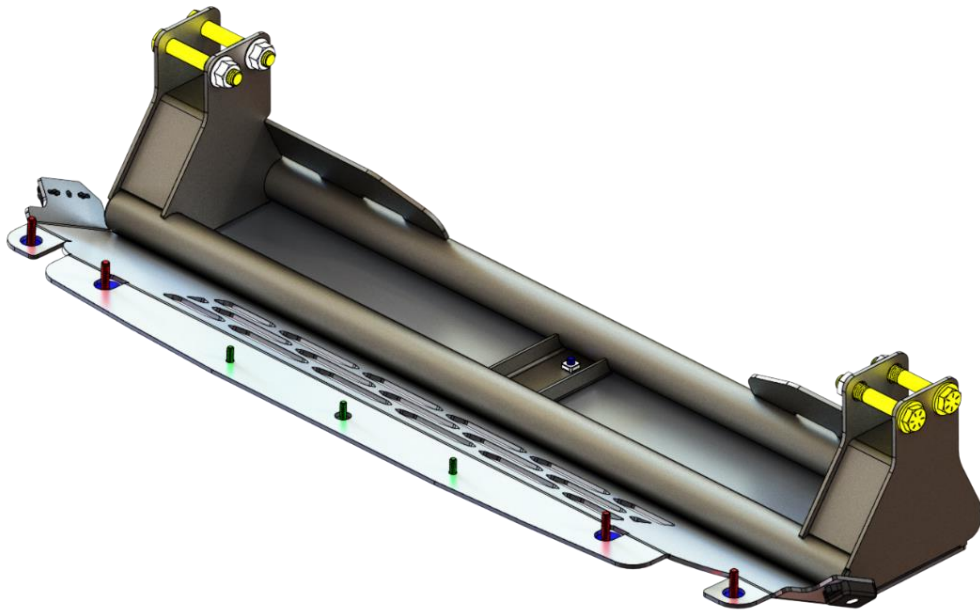
Description: SDHQ 2019+ Dodge 2500/3500 Intercooler Skid Plate System



Parts List	Hardware List	Required Tools
(1) SDHQ Intercooler Skid Plate SDHQ-31-1501-G5-D (1) SDHQ Sub Frame SDHQ-31-1501-G5-SF (1) Hardware Package SDHQ-31-1501-G5-HW	(8) M8 x 1.25 mm SS Flat Head Screw (6) 5/16"-18 SS Flat Head Screw (3) 1/4"-20 SS Flat Head Screw (14) 5/16" x 1-3/8" Round Body Washers (3) 1/4" x 1-3/8" Round Body Washers (3) 1/4"-20 Heavy-Duty Rivet Nut (4) 5/8"-11 Grade 8 Steel Bolt (4) 5/8" Grade 8 Steel Washer (1) Cut template	10mm, 13mm, 24mm, and 15/16" Sockets Metric and SAE Allen Wrenches Plastic Trim Removal Tool Rivet Nut Tool Utility Knife Hole Punch 25/64" Drill Bit Floor Jack Assembly Lube
Tech Notes		
Factory front valance, sub frame bracket, and hardware are not utilized in this installation. Fits 2019+ Dodge Ram 2500/3500 trucks Rock Light Mount Fits: Baja Designs Rock Light and Dune Gear Rock Light Standard and Mini Size Approx. Install Time: 2 Hour		

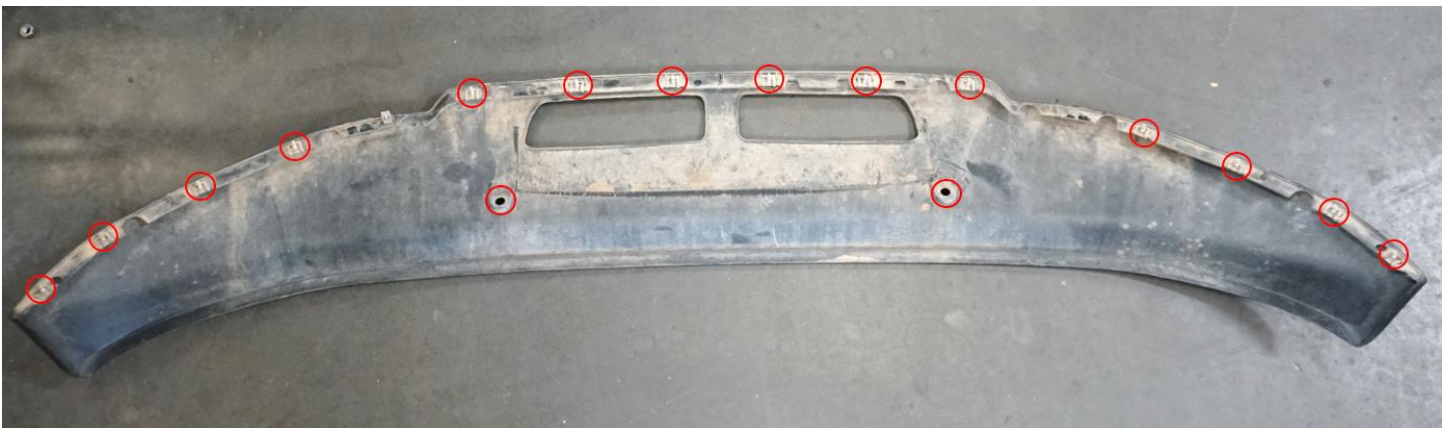
*****READ ALL INSTRUCTIONS THOROUGHLY FROM START TO FINISH BEFORE BEGINNING INSTALLATION!*****

For questions or help with the installation, please email help@sdhqoffroad.com
 Store front hours: Mon. – Fri. 8:00am – 5:30pm and Sat. 9:00am – 2:00pm Arizona Time.



Installation Instructions:

1. Unbox all of your parts and familiarize yourself with them.
2. Start by removing the front license plate bracket (if equipped) with a flathead screwdriver. There are a total of (4) screws that need to be removed.
3. Locate the (14) 10mm bolts which hold the valance to the front bumper and begin removing them. Use a plastic trim removal tool for the plastic retainers which hold the valance to the bumper. There are (2) retainers on the inside of the valance that need to be popped out and (2) on the outside center section that also needs to get popped out.



4. Once all the hardware is removed begin pulling straight down on the valance to separate it from the truck. On the bottom of the bumper there are (4) 10mm bolts which need to be removed. These bolts were previously covered by the valance.



For questions or help with the installation, please email help@sdhqoffroad.com
Store front hours: Mon. – Fri. 8:00am – 5:30pm and Sat. 9:00am – 2:00pm Arizona Time.

5. The valance support brackets will be removed next. The support brackets are held in place with (2) 13mm bolts on either side. Set aside the brackets and hardware as they will not be reused.



6. Locate the factory front frame rail bracket on both sides of the vehicle. The bracket is held in place by (2) 24mm bolts on either side. Using a 24mm wrench and socket, remove the brackets and hardware. They will not be reused for this install.

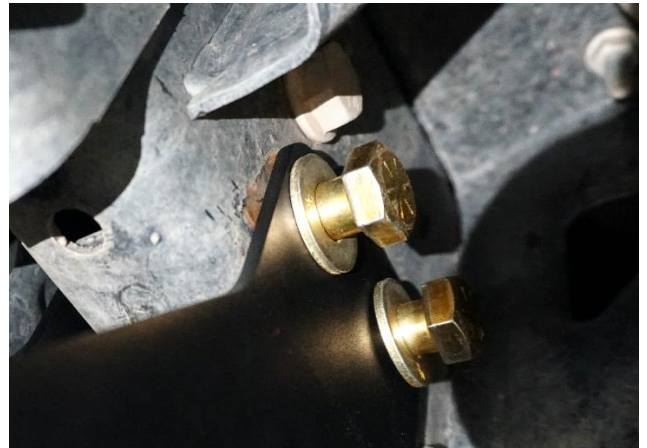


7. Place the sub frame underneath the install area and check that the sub frame mount is oriented correctly. The longer side of the sub frame will face forward as shown below.



For questions or help with the installation, please email help@sdhqoffroad.com
Store front hours: Mon. – Fri. 8:00am – 5:30pm and Sat. 9:00am – 2:00pm Arizona Time.

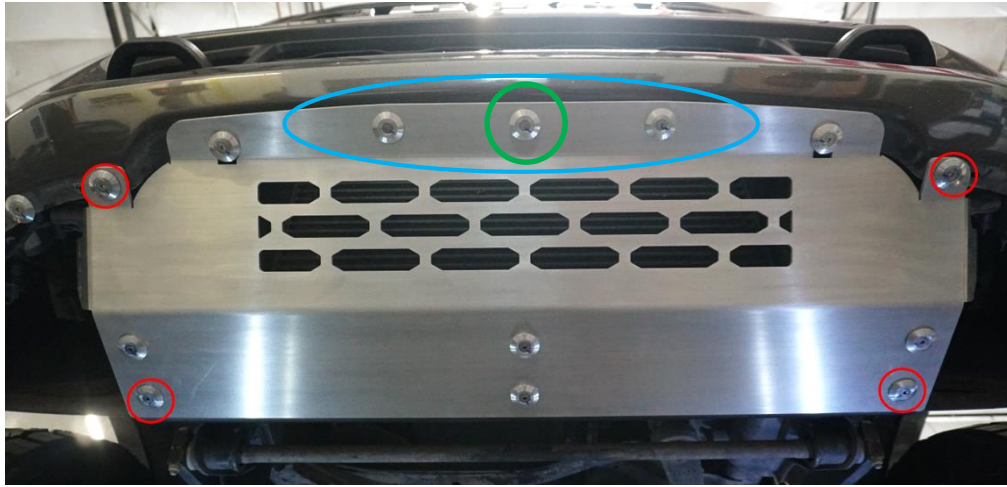
8. Lift the sub frame with either a floor jack or another person. It will bolt to the location of the previously removed frame rail brackets. Using the supplied (4) 5/8" bolts and washers attach the sub frame to the vehicle. Start the bolts by hand, leaving them loose for now as they will be tightened at the end.



9. To install the intercooler skid plate, you will need to use a knife to trim the rubber shrouding for the intercooler. Use the provided template to trace both sides of the intake duct.



10. After the shroud has been cut, mount your intercooler skid plate using just the (4) corner screws and body washers. ****MAKE SURE THE SKID PLATE IS CENTERED BEFORE CONTINUING****. The skid plate will be used as a drill template for the (2) holes that need to be added for correct mounting of the skid plate.



11. Align the skid plate off the **center hole** in the bumper. Mark the (2) outer holes and remove the skid plate. Use a 25/64" drill bit and drill out the holes. Then use a rivet nut tool to install the included (3) 1/4"-20 Rivet Nuts into the holes.



12. Install the skid plate to the sub frame mount with the included hardware, using the diagram on page 4 for reference. Make sure to use assembly lube on all stainless hardware when installing the skid plate. Add (4) additional M8 countersunk bolts and body washers to the holes from the 10mm bolts removed in step 4. Completely tighten down all screws and then tighten the 5/8" sub frame bolts last.



For questions or help with the installation, please email help@sdhqoffroad.com
Store front hours: Mon. – Fri. 8:00am – 5:30pm and Sat. 9:00am – 2:00pm Arizona Time.

13. Enjoy your new SDHQ Intercooler Skid Plate for your Dodge Ram 2500/3500!



For questions or help with the installation, please email help@sdhqoffroad.com
Store front hours: Mon. – Fri. 8:00am – 5:30pm and Sat. 9:00am – 2:00pm Arizona Time.
Page 9 of 10

*****Double check all hardware is installed correctly and tight*****

*****Re-torque ALL bolts after 100 miles*****



190 S McQueen Rd
Ste 109 Gilbert, AZ 85233
www.sdhqoffroad.com

Follow us on:



Facebook



Instagram

For questions or help with the installation, please email help@sdhqoffroad.com
Store front hours: Mon. – Fri. 8:00am – 5:30pm and Sat. 9:00am – 2:00pm Arizona Time.